

SURVEY FOR:
 HUNTER, SHUTE & MARTIN
 OF LOT 9, BLOCK 5 IN BERRYVALE
 ADDITION IN THE SOUTH 1/2 OF SEC.
 13, T37S, R2W, W. M.
 MEDFORD, OREGON
 FEBRUARY 15, 1979

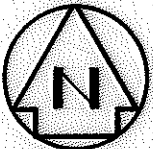
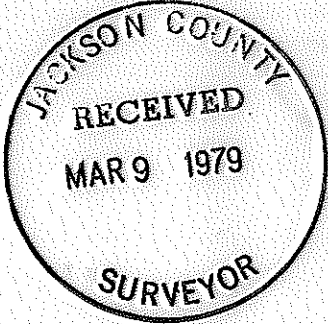
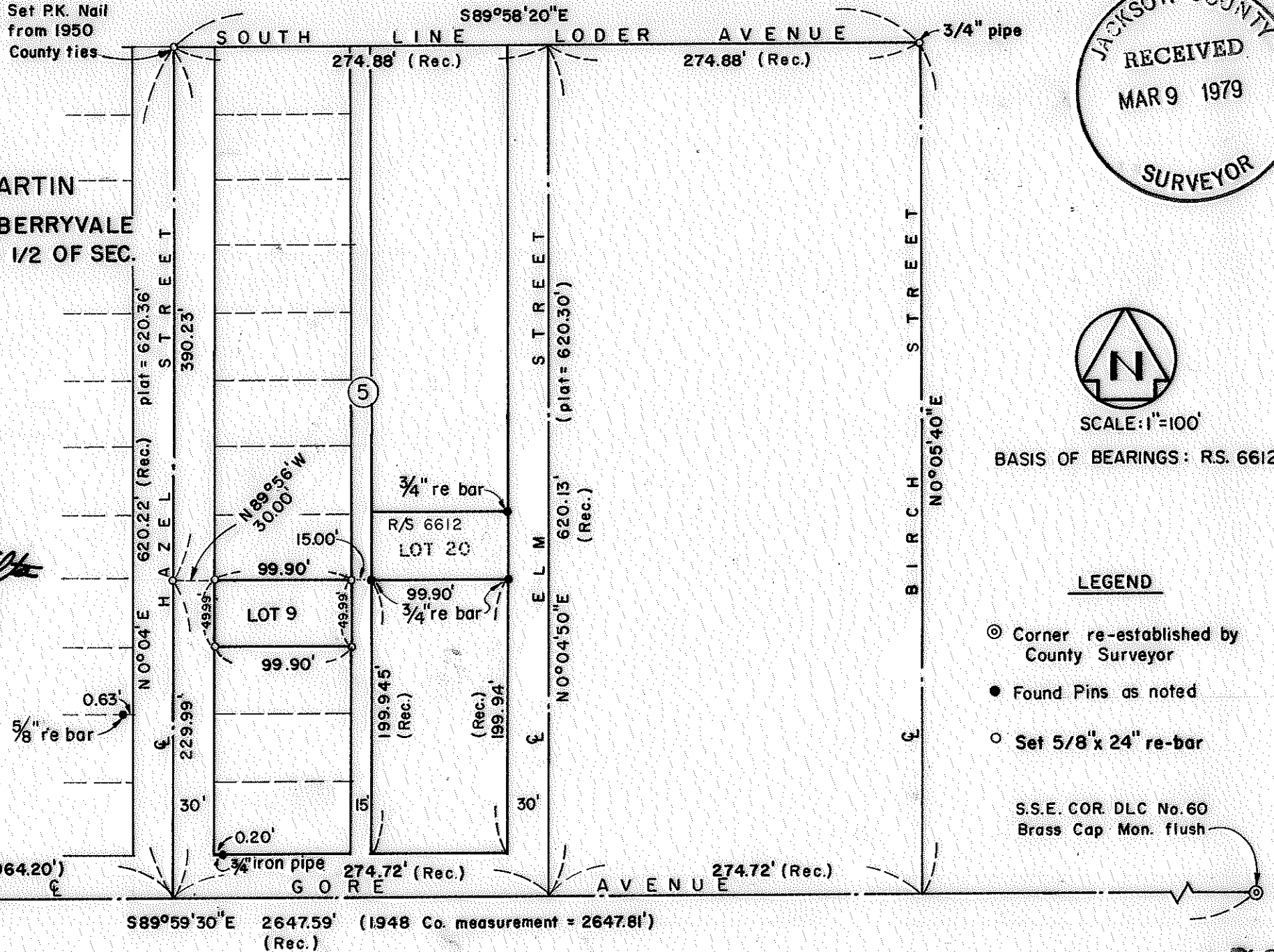
REGISTERED
 PROFESSIONAL
 LAND SURVEYOR

Robert Joseph Milts

OREGON
 SEPTEMBER 23, 1977
 ROBERT JOSEPH MILTS
 No. 1270

S.W. COR. DLC No.60
 3/4" pin in conc.

964.06' (R.S. 5452=964.20')
 (Rec.)



SCALE: 1"=100'
 BASIS OF BEARINGS: R.S. 6612

LEGEND

- ⊙ Corner re-established by County Surveyor
- Found Pins as noted
- Set 5/8" x 24" re-bar

SURVEY NARRATIVE TO COMPLY WITH ORS 209.250.

FOR: Hunter, Shute & Martin
839 East Main
Medford, Oregon

PURPOSE: To monument the corners of Lot 9, Block 5 of BERRYVALE
ADDITION in Sec. 13, T 37S, R2W, W. M., Medford, Oregon.

PROCEDURE: Using E.D.M. equipment and Wild T1A theodolite set P.K. nail,
using County ties, at South Line of Loder Avenue and Hazel
Street. Found monuments as noted. This block was surveyed by
Mark E. Boyden in December, 1976, using proportionate measure-
ments. From said data, monumented the desired lot corners by
proportionate measurements.

February 15, 1979

