

FLAGSTONE SUBDIVISION

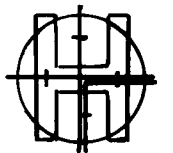
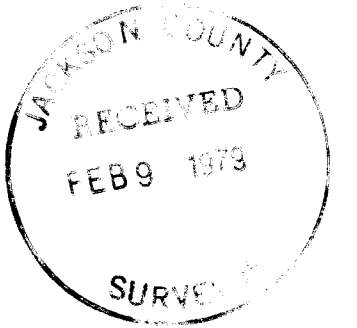
LOCATED IN
NORTH 1/2 OF SECTION 10, TOWNSHIP 37 SOUTH, RANGE 2 WEST, WILLAMETTE MERIDIAN
CITY OF CENTRAL POINT, JACKSON COUNTY, OREGON
POST MONUMENTATION PLAT

Filed for record this the 8th day of February 1979 at 4:30 O'Clock A.M.
and recorded in Volume of Plats at page of Records of Jackson
County, Oregon. By Deputy County Clerk

I Jack A. Hoffbuhr,
a duly registered Surveyor of
the State of Oregon, being first duly
sworn, do hereby certify that this
map represent a survey made by me
or under my direction and the
monuments conform to O.R.S.
92.060.

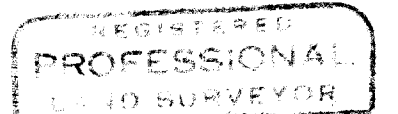
Examined and approved this
1 day of Feb, 1979

David [Signature]
City Engineer



HOFFBUHR SURVEYING, INC.
MEDFORD, OREGON

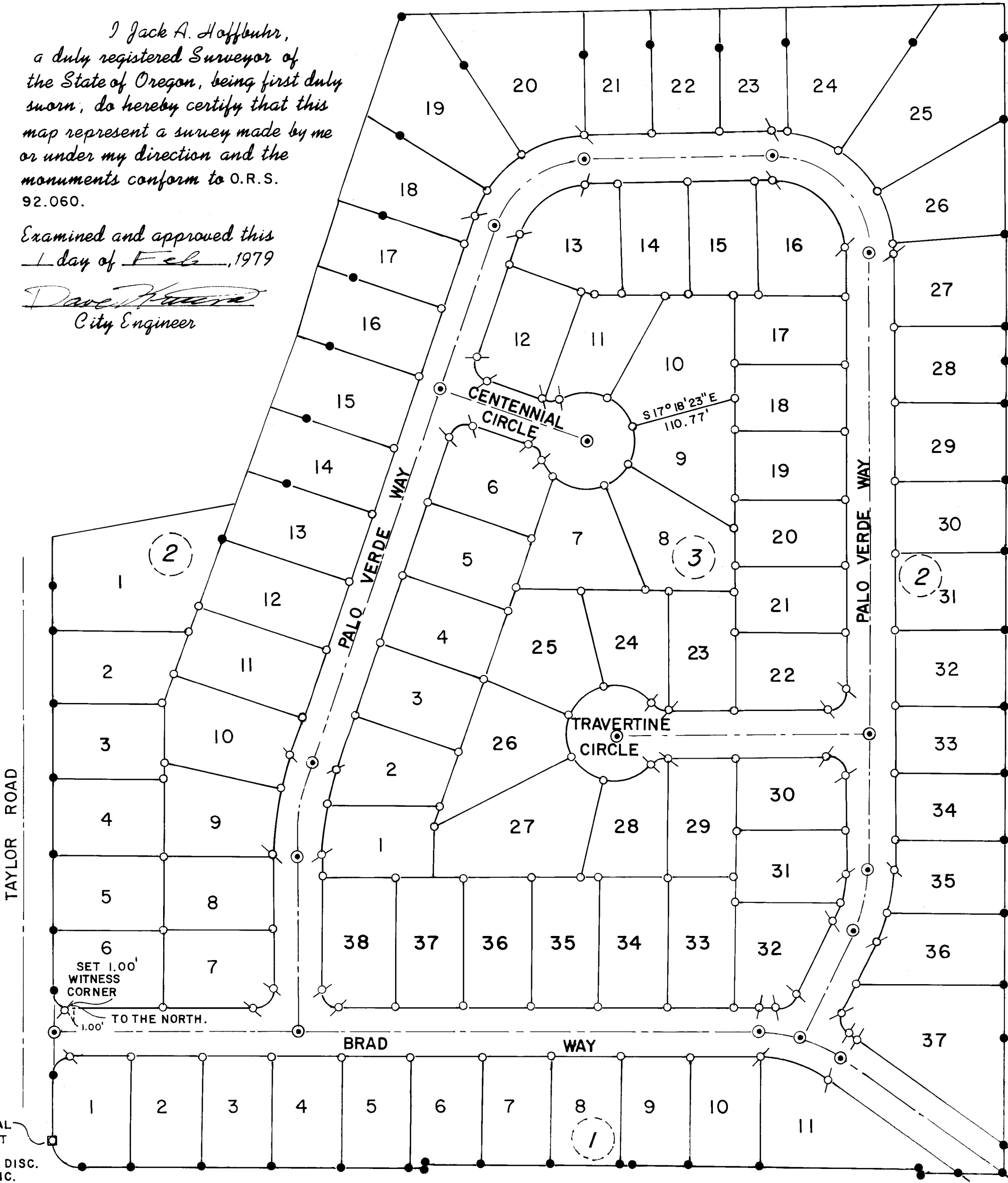
BY: JACK A. HOFFBUHR P.L.S.222
SCALE: 1"=100' JANUARY 2, 1979



J.A. Hoffbuhr



- MONUMENT PER ORIGINAL SUBDIVISION PLAT.
- SET 5/8" X 24" IRON REINF. ROD.
- ⊗ SET 5/8" X 30" IRON REINF. ROD.
- ⊙ STREET MONUMENT WITH BRASS DISC.



INITIAL POINT
BRASS DISC.
IN CONC.

79-02790
S10 BA 37 2W