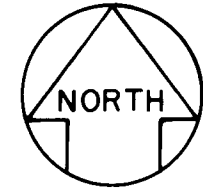
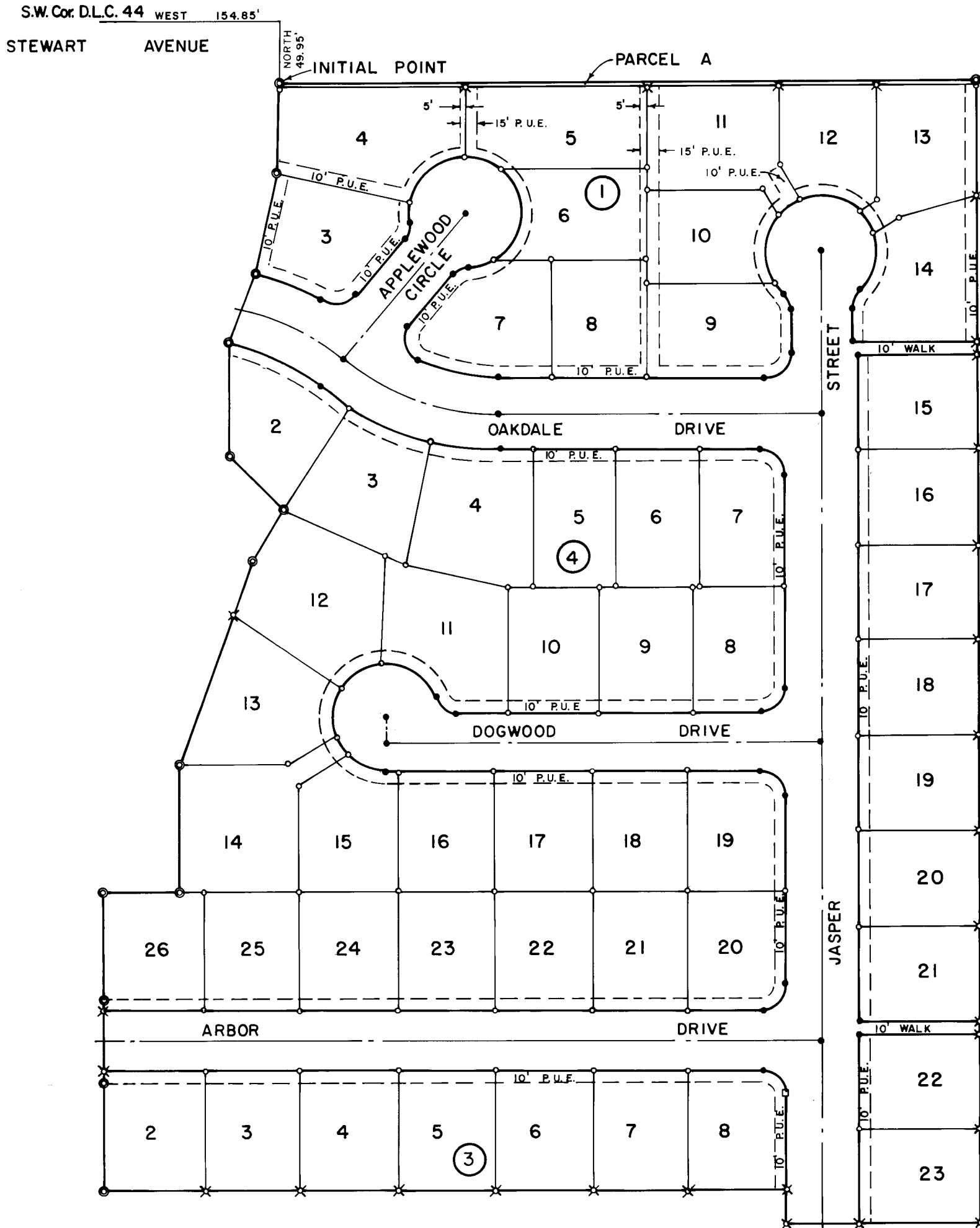


# ARBORWOOD UNIT NO. 2

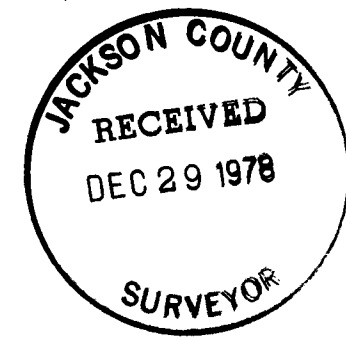
LOCATED IN THE WEST HALF OF SEC. 31, T. 37S., R. 1W.,  
WILLAMETTE MERIDIAN, CITY OF MEDFORD,  
JACKSON COUNTY, OREGON.

## POST MONUMENTATION MAP

OCTOBER 10, 1978



SCALE: 1" = 100'



Examined and approved this 20<sup>th</sup> day of November 1978.

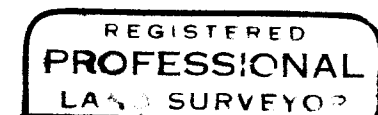
*Donald C. Walker*  
City Engineer

Filed for record this 29 day of December 19 78 at 2:20 O'Clock PM. and recorded in the official records of Jackson County, Oregon.

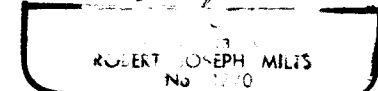
*Pat Watson*  
County Clerk

*Jay A. Rametis*  
Deputy

I, Robert Joseph Milts, duly registered Land Surveyor of the State of Oregon, do hereby certify that this Map represents a survey made by me or under my direction, and the Monuments conform to O.R.S. 92.060.



*Robert Joseph Milts*



### LEGEND

- Monument Found Per Original Subdivision Plat
- ✕ Monument Set Per Original Subdivision Plat
- 5/8"x30" Iron Pin Set
- 5/8"x24" Iron Pin Set
- Centerline Monument Set
- Tack in lead in sidewalk
- P.U.E. Public Utility Easement

### NOTE:

See Plat of Arborwood Unit No. 2 filed for record the 7th Day of July, 1978, at 12:11 O'Clock P.M. and Recorded in volume 13 of Plats on Page 43 of Records of Jackson County, Oregon, for lot bearings and distances.