

# PIÑON HILLS SUBDIVISION

LOCATED IN N. E. 1/4 SECTION 20, T. 37 S., R. 1 W., W. M.  
CITY OF MEDFORD  
JACKSON COUNTY, OREGON

78-27714

## POST MONUMENTATION PLAT

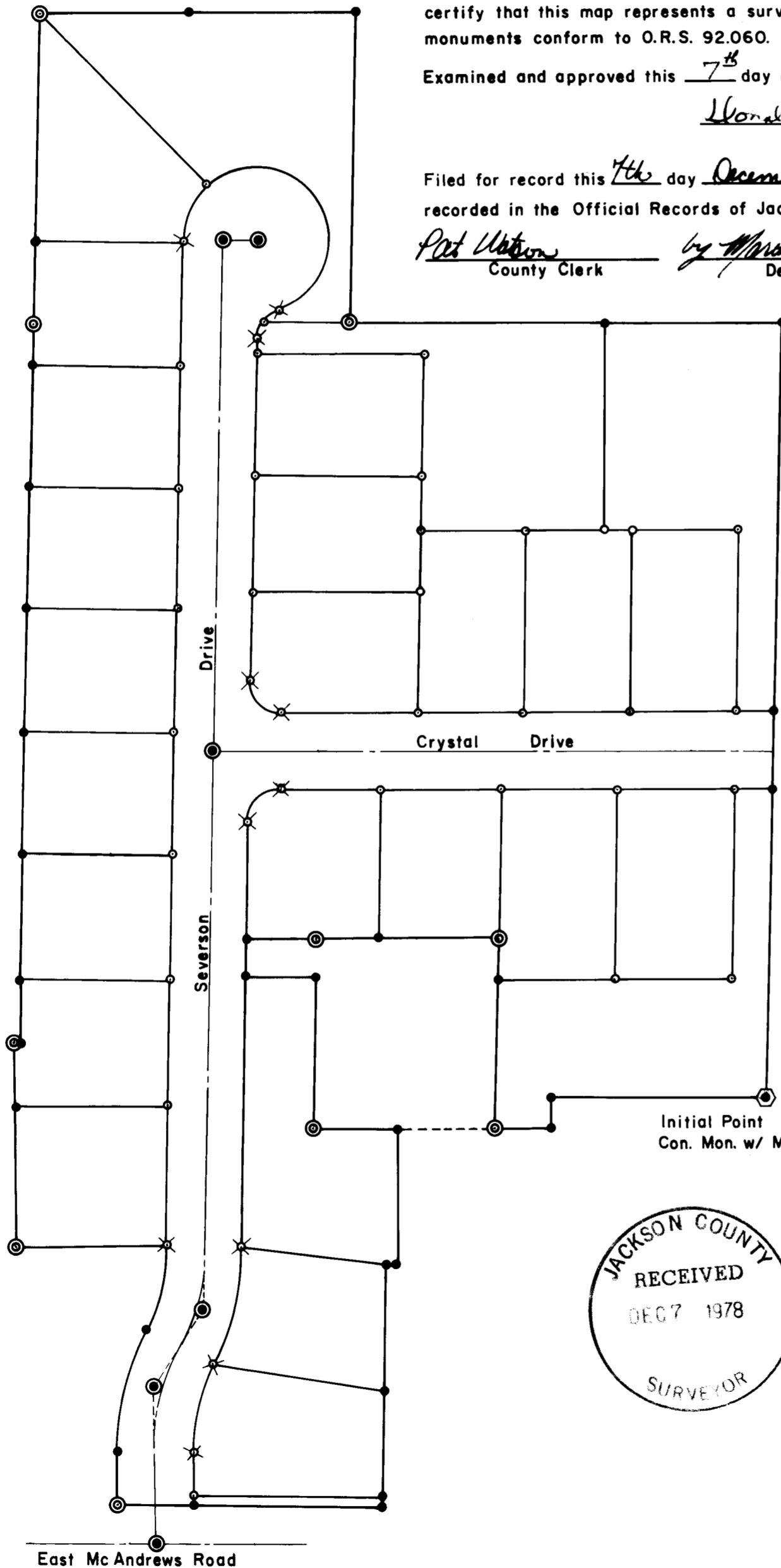
I, Verlyn Thomas, a duly Registered Surveyor of the State of Oregon, do hereby certify that this map represents a survey made by me or under my direction and the monuments conform to O.R.S. 92.060.

Examined and approved this 7<sup>th</sup> day of December, 1978.

Donald  
City Engineer

Filed for record this 7<sup>th</sup> day December, 1978 at 2:25 o'clock P. M. and recorded in the Official Records of Jackson County, Oregon.

Pat Watson County Clerk by Verlyn Thomas Deputy

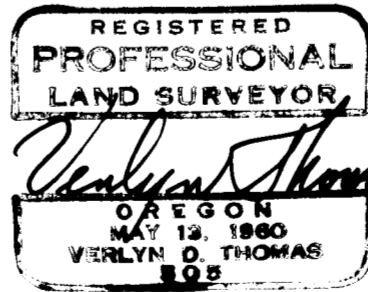


- ⊙ Monument Found
- Monument Per Original Subdivision Plat
- Set 5/8" X 24" Iron Pin
- ⊗ Set 5/8" X 30" Iron Pin
- ⊙ Street Monument With Brass Disc



SCALE: 1" = 80'

Initial Point  
Con. Mon. w/ Metal Disc



East Mc Andrews Road