

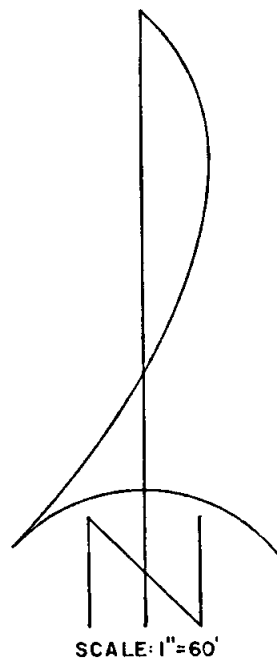
SUN OAKS, PHASE 2

A SUBDIVISION IN THE CITY OF MEDFORD

LOCATED IN THE N.E. 1/4 OF SECTION 32
AND IN D.L.C. No. 51, T. 37S., R. 1W., W.M., JACKSON COUNTY, OREGON

POST MONUMENTATION MAP

NOVEMBER 22, 1978



- Monuments per original subdivision plat
- Set 3/4" X 24" re-bar except as shown
- W.C.=Witness Corner

NOTE: See plat of SUN OAKS, PHASE 2 filed for record the 28th day of December, 1977, at 4:36 o'clock P.M. and recorded in volume 13 of plats at page 24 of records of Jackson County, Oregon, for dimensions.

I, MARK E. BOYDEN, DULY REGISTERED SURVEYOR OF THE STATE OF OREGON, DO HEREBY CERTIFY THAT THIS MAP REPRESENTS A SURVEY MADE BY ME OR UNDER MY DIRECTION AND THE MONUMENTS CONFORM TO O.R.S. 92.060.

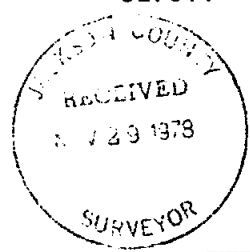
Mark E. Boyden
 SURVEYOR

EXAMINED AND APPROVED THIS 12th DAY OF November, 1978.

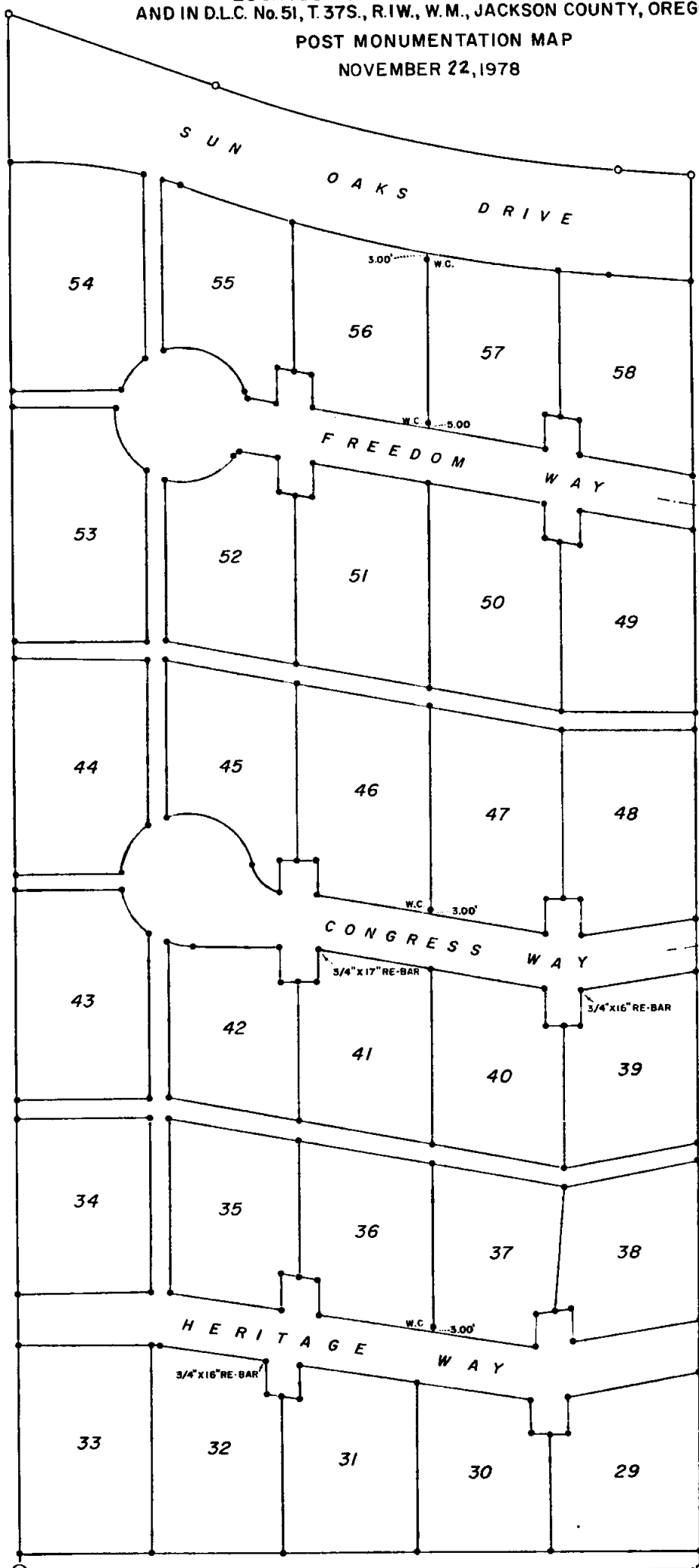
Donald C. Walker
 CITY ENGINEER

FILED FOR RECORD THIS 29th DAY OF November, 1978 AT 2:55 O'CLOCK P.M. AND RECORDED IN THE OFFICIAL RECORDS OF JACKSON COUNTY, OREGON.

Pat Watson
 COUNTY CLERK
Thomas W. Jewett
 DEPUTY



INITIAL POINT ○



CENTENNIAL DRIVE

ENGINEERS

3/4" X 8" RE-BAR