

7494

78-26836

# SLEEPY HOLLOW SUBDIVISION

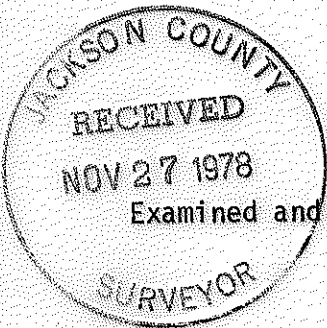
TO THE CITY OF ASHLAND

LOCATED IN D.L.C. NO. 41 IN TWP. 39S., R. 1 E.W.M., JACKSON COUNTY, OREGON

## POST MONUMENTATION MAP

- Monuments per original subdivision plat
- ⊕ Monuments per original subdivision plat
- ◇ Set 5/8 x 24 inch Iron Pin tagged RLS 759 unless otherwise shown
- ◆ Found 5/8 inch Iron Pin set on Recorded Survey No. 7335
- ⊗ Set monument as shown
- ⊙ Set 1 3/4 x 18"± Iron Pipe with Bronze Cap in Monument Case

I, Everett L. Swain, duly Registered Surveyor of the State of Oregon, do hereby certify that this map represents a survey made by me or under my direction and the monuments conform to O.R.S. 92.060



*Allen A. Alving*  
City Engineer

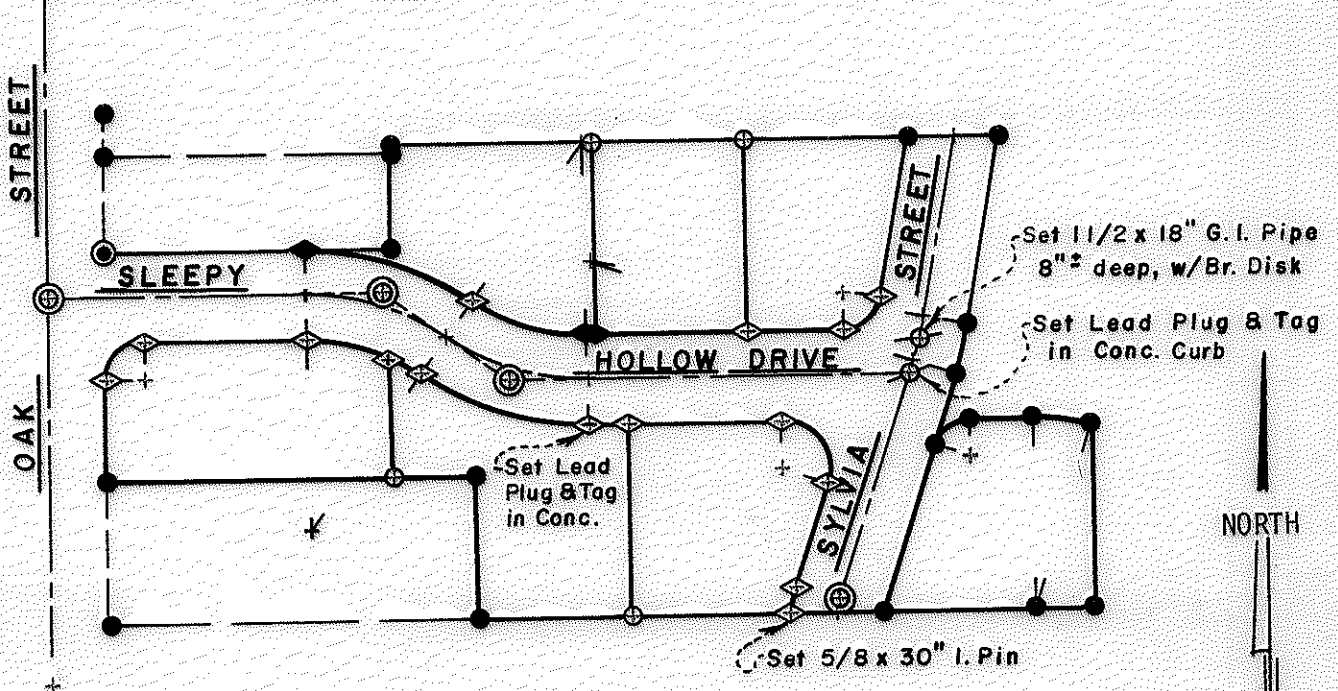
Filed for record this 27 day of November 1978 at 10:49 o'clock P. M.

and recorded in the Official Records of Jackson County, Oregon.

*Pat Watson*  
County Clerk

*Jay A. Bameter*  
Deputy

NOTE: See plat of SLEEPY HOLLOW SUBDIVISION filed for record the 5th day of April, 1978 at 2:22 o'clock P.M. and recorded in Volume 13 of plats at page 32 of records of Jackson County, Oregon for lot bearings and distances.



SCALE: 1"=100'

78-26836

(T.L. 169) S4EA 39 1E

7494