

BENNER SUBDIVISION

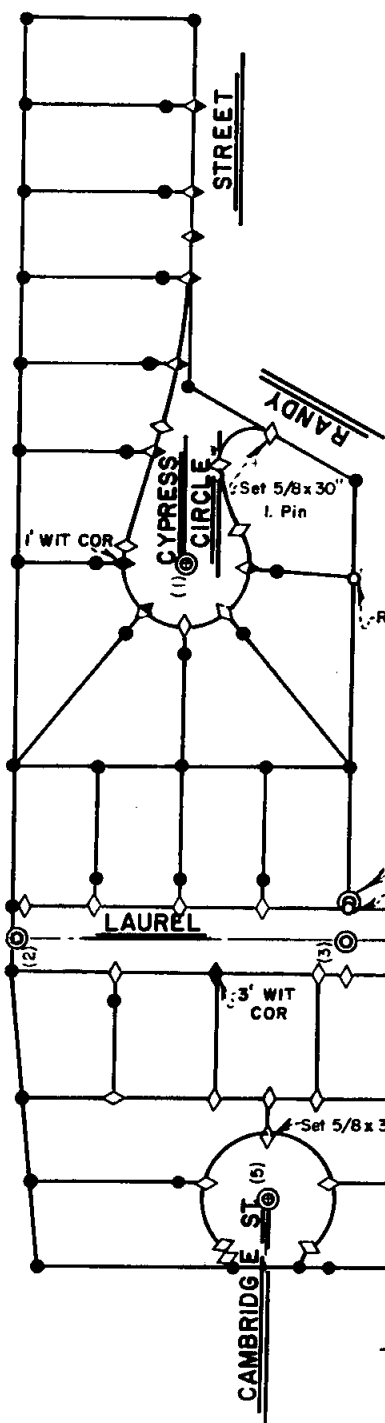
TO THE CITY OF ASHLAND

Located in the NW 1/4 of Sec. 4, Twp. 39S., R. 1 E.W.M., Jackson County, Oregon

POST MONUMENTATION MAP

- Monument per original subdivision plat
- Reset monument as shown
- ◇ Set 5/8 x 24 inch Iron Pin tagged RLS 759 unless otherwise shown
- ◊ Set Lead Plug and Tag in concrete
- ◆ Set 5/8 x 24 inch Iron Pin tagged WIT COR
Witness Corners are set back from street right of way and on lot line
- ⊙ Set Iron Pipe with Bronze Cap in Monument Case - see legend for size

I, Everett L. Swain, duly Registered Surveyor of the State of Oregon, do hereby certify that this map represents a survey made by me or under my direction and the monuments conform to O.R.S. 92.060



Examined and approved this 21st day of November 1978

Allen A. Alling
City Engineer

Filed for record this 21 day of November 1978 at

12:23 o'clock P.M. and recorded in the Official Records of Jackson County, Oregon.

Pat West
County Clerk
Deputy

NOTE: See plat of BENNER SUBDIVISION filed for record the 15th day of February, 1978 at 3:54 o'clock PM and recorded in Volume 13 of plat. at page 27 of records of Jackson County, Oregon for lot bearings and distances.

- LEGEND:
- (1) 1-3/4 x 18" galvanized iron pipe
 - (2) 1-1/2 x 25" galvanized iron pipe
 - (3) 1-3/4 x 24" galvanized iron pipe
 - (4) 1-1/2 x 16" galvanized iron pipe
 - (5) 2 x 24" iron pipe

BENNER SUBDIVISION
REF MON
5 Feet
to
INITIAL POINT
RLS 759 1978

REGISTERED
PROFESSIONAL
LAND SURVEYOR

Everett L. Swain

OREGON
JULY 9, 1966
EVERETT L. SWAIN
759

Scale: 1"=100'

