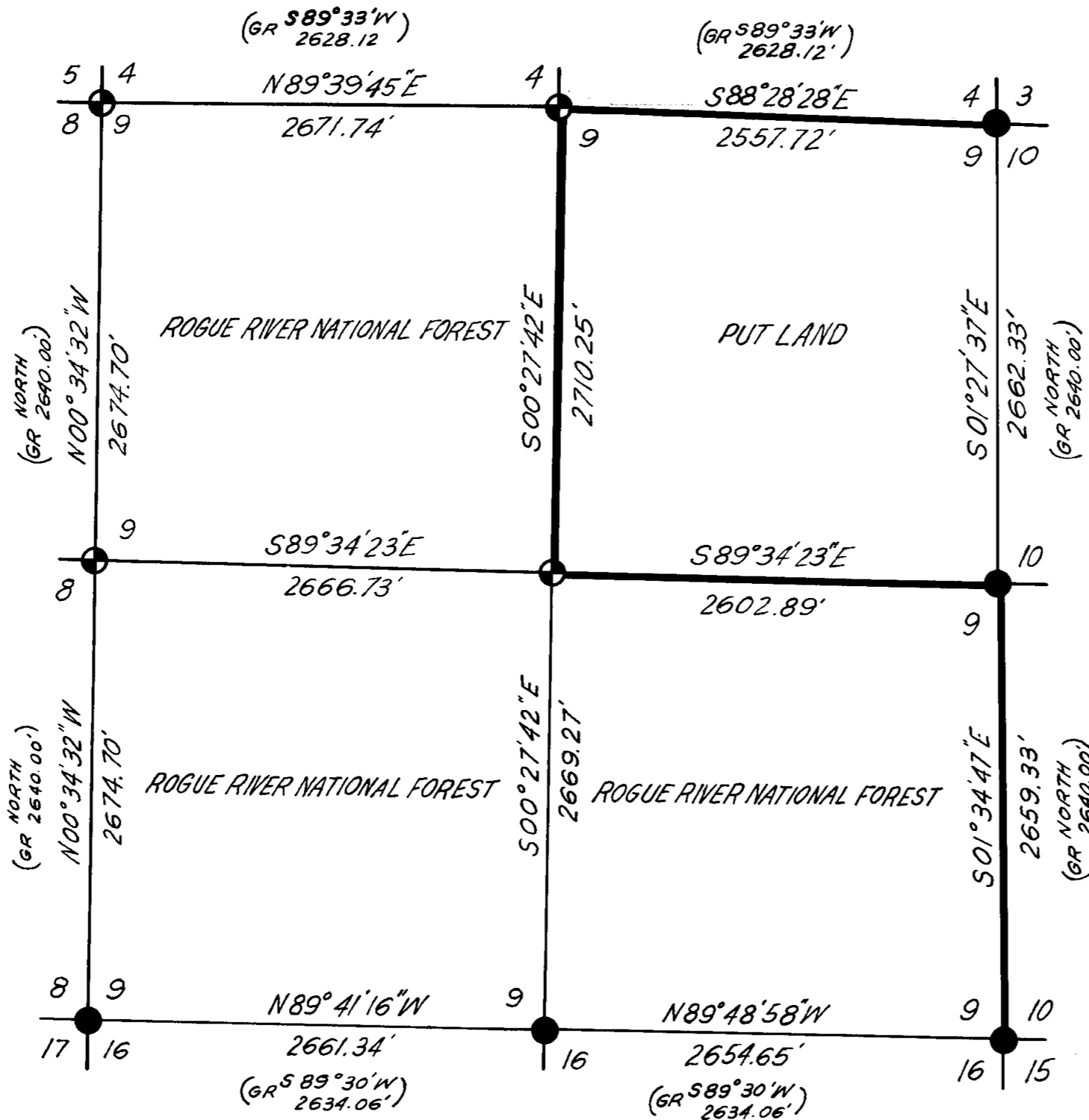
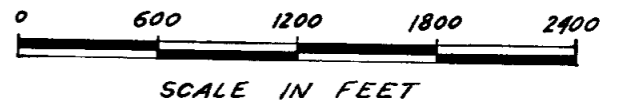


7463



Basis of Survey - Solar Observation

MAP OF SURVEY
 LOCATED IN
 SEC. 9, T.32S., R.3E., W.M.
 JACKSON COUNTY, OREGON
 FOR
 ROGUE RIVER NATIONAL FOREST
 OCTOBER 21, 1978

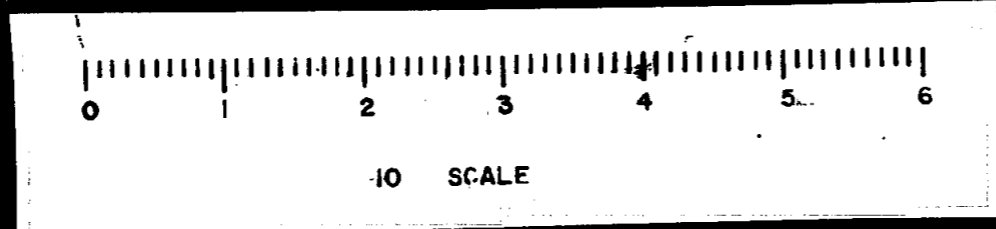


LEGEND
 ● Found Standard B.L.M. Monument
 ⊕ Set 2 1/2" Dia. X 30" lg. iron post with 2 1/2" Dia. Brass Cap.
 — National Forest Boundary

CERTIFICATE OF SURVEY
 I, HAROLD L. CENTER, REGISTRATION NO. 1071, REGISTERED PROFESSIONAL LAND SURVEYOR, STATE OF OREGON, HEREBY CERTIFY THAT THIS MAP CORRECTLY REPRESENTS A SURVEY MADE BY ME OR UNDER MY DIRECTION IN CONFORMANCE WITH THE LAWS OF THE STATE OF OREGON AT THE REQUEST OF THE U.S. FOREST SERVICE.

U.S. DEPARTMENT OF AGRICULTURE FOREST SERVICE REGION 6 ROGUE RIVER NAT. FOREST	
SECTION SUBDIVISION SECTION 9 Township 32 South, Range 3 East, W.M.	
SURVEYED BY: <u>R. Mitchell</u>	DATE: <u>8-78</u>
REVIEWED BY: <u>D. McDonald</u>	DATE: <u>10/2/78</u>
APPROVED BY: <u>Dick Hathaway</u>	DATE: <u>10-24-78</u>

7463



7463

7463

Survey No. 7463-A
Page 1 of 1

NARRATIVE TO COMPLY WITH PARAGRAPH
209.250 OREGON REVISED STATUTES

Survey for: Rogue River National Forest
P. O. Box 520
Medford, Oregon 97501

Location: Section corner common to Sections 8, 9, 16 and
17, Township 32 South, Range 3 East Willamette
Meridian, Jackson County, Oregon.

Purpose: To correct an error within the original narrative
describing the monument for the Section corner
common to Sections 8, 9, 16 and 17, Township 32
South, Range 3 East, Willamette Meridian. The
narrative should read as follows:

At the corner location I found a standard BLM
monument marked:

HAROLD L. CENTER
Registered Professional Land Surveyor
Oregon Certificate No. 1071

REGISTERED
PROFESSIONAL
LAND SURVEYOR

HAROLD L. CENTER
JULY 22, 1976
No. 1071

JACKSON COUNTY
OREGON

Corners Established this Survey

One-quarter corner common to Sections 8 and 9, Township 32 South, Range 3 East, Willamette Meridian.

At the proportion corner position I set a two and one-half inch diameter galvanized iron post with a two and one-half inch diameter brass cap marked:

T32S R3E
 1/4
 S8 | S9
 1978
 LS1071

From which the following references:

A fir, 19 inches in diameter, bears N 57° 19' W, 61.80 feet distance, scribed 1/4 S8 LS1071 BT.

A cedar, 10 inches in diameter, bears N 33° 46' E, 60.20 feet distance, scribed 1/4 S9 LS1071 BT.

Center one-quarter corner Section 9, Township 32 South, Range 3 East, Willamette Meridian.

At the corner position I set a two and one-half inch diameter galvanized iron post with two and one-half inch diameter brass cap marked:

T32S R3E
 C 1/4 — | — S9
 1978
 LS1071

From which the following references:

A fir 13 inches in diameter, bears S 01° 19' E, 17.50 feet distance, scribed C 1/4 S9 LS1071 BT.

A fir 12 inches in diameter, bears S 89° 30' W, 19.70 feet distance, scribed C 1/4 S9 LS1071 BT.

HAROLD L. CENTER
 Registered Professional Land Surveyor
 Oregon Certificate No. 1071

REGISTERED
 PROFESSIONAL
 LAND SURVEYOR

Harold L. Center
 OREGON
 HAROLD L. CENTER
 JULY 30, 1976
 No. 1071

JACKSON COUNTY
 RECEIVED
 OCT 26 1978
 SURVEYOR

A fir, 37 inches in diameter, bears N 60° W, 59 feet distance to face, scribed BT N64W 58 on open blaze. (Scribe indicates bearing and distance to corner.)

A fir, 12 inches in diameter, bears N 49° 16' W, 87.75 feet distance, scribed T32S R3E S5 LS1071 BT.

A fir, 33 inches in diameter, bears N 22° E, 95.70 feet distance to face, scribed BT visible on mutilated blaze.

A fir, 33 inches in diameter, bears N 55° 13' E, 59.25 feet distance, scribed T32S R3E S4 LS1071 BT.

A pine, 17 inches in diameter, bears S 84° 11' E, 49.48 feet distance, scribed T32S R3E S9 LS1071 BT.

A fir, 24 inches in diameter, bears S55° 55' E, 93.00 feet distance to face, scribed BT S59E 93 on opened blaze. (Scribe indicates bearing and distance to corner.)

A fir, 35 inches in diameter, bears S 14° 04' W, 119.0 feet distance to face, scribed S10W 119 on opened blaze. (Scribe indicates bearing and distance to corner.)

A fir, 10 inches in diameter, bears S 59° 05' W, 23.80 feet distance, scribed T32S R3E LS1071 BT.

One-quarter corner common to Sections 4 and 9, Township 32 South, Range 3 East, Willamette Meridian.

At the corner location I set a two and one-half inch diameter galvanized iron post with two and one-half inch diameter brass cap marked:

T32S R3E

1/4 $\frac{S4}{S9}$

1978
LS1071

From which the following references:

A maple clump, bears N 23° W, 5.00 feet distance.

A hemlock, 12 inches in diameter, bears N 15° 49' W, 13.10 feet distance, scribed 1/4 S4 LS1071 BT. Also, a 1936 location poster stating that this is a corner.

A fir, 10 inches in diameter, bears S 68° E, 14.60 feet distance, scribed 1/4 S9 LS1071 BT.

A mutilated fir stump, 64 inches in diameter, bears S 40° E, 15.84 feet distance to face.

A pine stump, 20 inches in diameter bears S 46 ° 32' E, 11.00 feet distance, healed blaze.

A fir, 10 inches in diameter, bears S 20° 02' W, 35.40 feet distance, healed blaze.

Section corner common to Sections 8, 9, 16 and 17, Township 32 South, Range 3 East, Willamette Meridian.

At the corner location I found a one inch diameter iron post with one and one-half inch diameter bell pipe reducer filled with lead and marked:

U.S. Dept. of Interior
Cadastral Surveys
Unlawful to Disturb

T32S	R3E
8	9
17	16
1962	

From which the following references:

A hemlock, 8 inches in diameter bears S 19° 15' E, 32.30 feet distance, healed blaze.

A fir, 25 inches in diameter, bears S 28° 07' W, 6.70 feet distance, healed blaze.

A fir snag, 6 inches in diameter, bears S 34° 43' W, 62.20 feet distance, healed blaze.

A hemlock, 14 inches in diameter, bears N 18° 50' W, 29.20 feet distance, healed blaze.

A fir, 40 inches in diameter, bears N 9° 57' E, 19.50 feet distance, healed blaze.

CORNERS REMONUMENTED THIS SURVEY

Section corner common to Sections 4, 5, 8 and 9, Township 32 South, Range 3 East, Willamette Meridian.

At the corner location I set a two and one-half inch diameter galvanized iron post with two and one-half inch diameter brass cap marked:

T32S	R3E
S5	S4
S8	S9
LS 1071	
1978	

From which the following references:

T32S R3E

9	10
16	15

1958 CS
US BLM 1962

From which the following references:

A pine, 35 inches in diameter, bears S 61° 30' W, 6.00 feet distance.
Illegible scribed marks visible on opened blaze.

A pine, 30 inches in diameter, bears S 45° 14' W, 38.20 feet distance,
healed blaze.

A pine, 40 inches diameter, bears N 69° 38' W, 45.10 feet distance,
healed blaze.

A fir, 10 inches in diameter, bears N 28° 12' W, 21.70 feet distance,
healed blaze.

A fir, 10 inches in diameter, bears N 23° 06' W, 23.00 feet distance,
healed blaze.

A fir, 15 inches in diameter, bears N 27° 24' E, 30.00 feet distance,
healed blaze.

A fir, 11 inches in diameter, bears N 28° 41' E, 20.20 feet distance,
healed blaze.

A fir, 11 inches in diameter, bears S 80° 55' E, 13.60 feet distance,
healed blaze.

A pine, 9.5 inches in diameter, bears S 49° 12' E, 11.50 feet
distance, healed blaze.

One-quarter corner common to Sections 9 and 16, Township 32 South, Range
3 East, Willamette Meridian.

At the corner I found a standard BLM monument marked:

U.S. Dept. of Interior
Cadastral Surveys
Unlawful to Disturb

T32S R3E

1/4	S9
	S16

1962

From which the following references:

A fir, 42 inches in diameter, bears N 41° 02' W, 22.30 feet distance,
healed blaze.

A fir, 14 inches in diameter bears N 45° 28' E, 29.60 feet distance,
healed blaze.

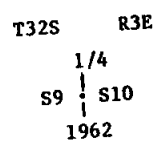
From which the following references:

- A cedar, 11 inches in diameter, bears N 81° 41' W, 122.50 feet distance, with scribe mark S visible on partially healed upper blaze and healed blaze.
- A fir, Record N 67° W, 161 Lks. I did not tie to this tree.
- A hemlock snag, 13 inches in diameter, bears N 10° 53' W, 31.50 feet distance, with R 3 E S 4 B T visible on open rotted blaze.
- A cedar, 9 inches in diameter, bears N 40° 11' E, 24.20 feet distance, healed blaze.
- A fir 16 inches in diameter, bears N 77° 07' E, 132.60 feet distance, with healed double blaze.
- A solid rock outcrop, 3 x 2 x 1 feet, bears S 62° 50' E, 2.90 feet distance, with a cross (X) on top.
- Unable to locate BLM hemlock, record S 63° W, 45 Lks, distance.
- A yew, 9 inches in diameter, bears S 81° 05' W, 93.30 feet distance, with scribe marks S visible on partially healed upper blaze, and B T visible on partially healed lower blaze.

One-quarter corner common to Sections 9 and 10, Township 32 South, Range 3 East, Willamette Meridian.

At the corner location I found a standard BLM monument marked:

U.S. Dept. of Interior
Cadastral Surveys
Unlawful to Disturb



From which the following references:

- A fir, 9 inches in diameter, bears N 6° W, 27.20 feet distance, healed blaze.
- A fir, 11 inches in diameter, bears S 61° 39' W, 17.50 feet distance, healed blaze.
- A sawed fir stump, 30 inches in diameter, bears N 21° 24' W, 20.00 feet distance, with scribe marks S visible on detached blaze.

Section corner common to Sections 9, 10, 16 and 15, Township 32 South, Range 3 East, Willamette Meridian.

At the corner location I found a one-inch diameter iron post with one and one-half inch diameter bell pipe reducer filled with lead marked:

The one-quarter corner common to Sections 4 and 9 falls within an old logged area and within the flood plain of Mill Creek. This area has been searched several times by Forest Service and County Surveyor personnel with no evidence of original monument or accessories recovered. A proportion position was computed utilizing the original creek call to east and original corner to west. A search of this position recovered a badly mutilated 64 inch fir stump and a maple clump which fit record bearing and distance. I also recovered a Forest Service location poster, circa 1936, with several initials of various foresters on it stating this to be the corner position. After consolidating recovered evidence; i.e., stump, maple clump, creek call and location poster and considering the proportion position calculation, I elected to accept the stump and maple clump as that of original accessories and established the corner at Record Bearing and the distance from face of the large fir stump. There are also old blazes lines running east, west and south from this position.

With the above corner control identified, I began a random line traverse from the section corner common to Sections 5, 4, 8 and 9 easterly to Section corner common to 4, 3, 9 and 10; thence south to one-quarter corner common to Sections 9 and 10; to Section corners 9, 10, 16 and 15; thence west through one-quarter corner 9 and 16 to Section corners 8, 9, 16 and 17; thence north closing my traverse on the northwest section corner Section 9.

From this data corner position were calculated and set. I then ran south from the one-quarter corner common to Sections 4 and 9 to the center one-quarter; thence east to one-quarter corner common to Sections 9 and 10. These lines closed within the required accuracy.

Corners Accepted for Control

Section corner common to Sections 4, 3, 9 and 10, Township 32 South, Range 3 East, Willamette Meridian.

At the corner location I found a one inch diameter iron post protruding 10 inches above ground with a one and one-half inch diameter bell pipe reducer filled with lead marked:

T32S R3E

$$\frac{4}{9} \frac{3}{10}$$

CS Sec. Cor. 1954
NSRLM 1962

NARRATIVE TO COMPLY WITH
OREGON REVISED STATUTES PARAGRAPH 209.250

Survey for: Rogue River National Forest
P. O. Box 520
Medford, Oregon 97501

Location: Section 9, Township 32 South, Range 3 East,
Willamette Meridian, Jackson County, Oregon.

Basis of Bearing: Solar observation.

Purpose: To establish property corners and mark and post
National Forest ownership within Section 9.

Procedure: Prior to commencement of this survey an investi-
gation of corner control was made. The Bureau
of Land Management had remonumented from original
evidence all controlling corners on the east
and south lines of Section 9 in 1962.

The section corner common to Sections 5, 4, 8
and 9 presented particular problems. Although
search of this area by the Forest Service and
Jackson County Surveyor's office personnel did
not recover any evidence of the original
monument or accessories, an additional search I
made did reveal three unrecorded scribed trees
to the northeast, southeast and southwest,
which upon opening revealed a scribed bearing
and distance to the corner position. A fourth
tree to the northwest had been mutilated by
party or parties unknown and was unreadable. A
ring count of the three trees showed them to
have been scribed about fifty years ago. A
copy of a State Highway Department right-of-way
plat, circa 1930, was obtained from the State
archives in Salem which supports the position
as established by intersection of distances
from said trees. Also, a proportion calculation
based on traverses to the closest acceptable
control closely substantiated this position.
In view of the aforementioned evidence, I
established this corner at intersection of
distances from recovered witness trees.

Original evidence of the one-quarter corner
common to Sections 8 and 9 had been searched
for by Forest Service and Deputies of the
County Surveyor's Office on several occasions.
A proportion position falls in the middle of
United Telephone Company right-of-way which
runs roughly north-south. Original accessory
calls were S 35° E, 15 Lks distance and S80° W,
4 links distance. The corner was apparently
destroyed during right-of-way clearing. With
no evidence of the original references this
corner was established by proportion measurement.

