

CASCADE VILLAGE, UNIT NO. 8

BEING LOCATED IN A PART OF ROGUE LANDS IRR. ORCHARD TRACTS AND IN SECTIONS 16 AND 17, T. 36 S., R. 1 W., W. M.
JACKSON COUNTY, OREGON

DEDICATION

KNOW ALL MEN BY THESE PRESENTS, that Commonwealth Properties, Inc. is a duly organized corporation of the State of Oregon and is owner in fee simple of the land described hereon and have caused the same to be surveyed and platted into lots, blocks, and streets as set forth and that this plat is a correct representation of said subdivision and hereby dedicate and convey to the public use of all streets, easements, and the area designated as a 10 foot walk shown hereon. Also we hereby dedicate to Jackson County in fee simple those areas designated as street plugs. Said subdivision being subject to easements, utility easements and street plugs shown hereon, and do designate said subdivision as CASCADE VILLAGE, UNIT NO. 8.

IN WITNESS WHEREOF, Commonwealth Properties, Inc., pursuant to a resolution of its Board of Directors, duly and legally adopted, has caused these presents to be signed by its officers on this 30 day of MAY, 1978.

Dale C. Johnson Vice President
Elizabeth B. Underwood Assistant Secretary

STATE OF OREGON)
SS
County of Washington)
May 30 A.D. 1978.

Personally appeared the above-named, Dale C. Johnson, Vice President and Elizabeth B. Underwood, Assistant Secretary, and acknowledged the foregoing instrument to be their free and voluntary act and deed.
Before me,

Corinne Butler
Notary Public for Oregon

My Commission expires the 2 day of December, 1980.

Examined and approved by the Planning Commission this 12th day of July, 1978 and this plat is in conformance with the tentative plat.

Paul M. Nelson Secretary
Bille J. Dickerson Chairman

For Order of the Jackson County Commissioners approving this plat see Volume _____, page _____, of County Commissioners' Journal of Proceedings.

By Gaby J. Soling Deputy
Sat. Thatson County Clerk

Rogue River Valley Irrigation District, in regular session has examined and approved this plat on this 26 day of July, 1978.

A. J. Swadlow Secretary
Otto Bohner President

Examined and approved for the use of Community Water Facilities and Community Sewage Disposal Facilities this 22 day of July, 1978.

John W. ...
County Health Officer

I have examined this plat and it is technically correct on this date 9-18, 1978.

By John Deputy
Edward A. McGinty County Surveyor

Examined and approved this 31ST day of July, 1978.

By Paul J. ... Deputy
Paul E. Stewart Director of Assessment and Taxation

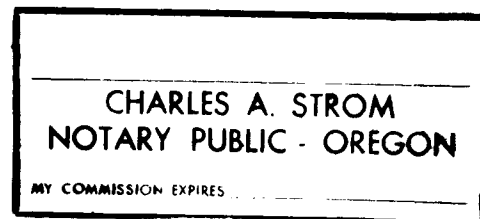
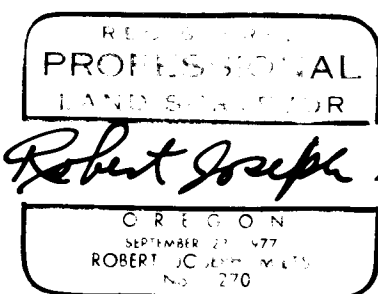
SURVEYOR'S CERTIFICATE

STATE OF OREGON)
SS
County of Jackson)

I, Robert Joseph Milts, a duly Registered Surveyor of the State of Oregon, being duly sworn, depose and say that this, CASCADE VILLAGE UNIT NO. 8 Plat correctly represents a survey made under my direction and the following is an accurate description thereof:

Commencing at the quarter corner common to Sections 19 and 20, Township 36 South, Range 1 West, Willamette Meridian, Jackson County, Oregon; thence North 3302.86 feet; thence East 4608.26 feet to an 8" diameter by 24" concrete monument with bronze disk set 6" below the ground surface for the initial point of beginning, said point being the initial point of CASCADE VILLAGE, UNIT NO. 4; thence North 00°12'40" East, 60.00 feet; thence North 89°47'20" West, 334.13 feet; thence along the arc of a curve right 47.00 feet (which arc has a radius of 20.00 feet and a long chord of North 22°27'55" West, 36.91 feet); thence North 44°51'30" East, 116.04 feet; thence South 45°08'30" East, 23.63 feet; thence South 89°47'20" East, 255.79 feet; thence along the arc of a curve right 47.96 feet (which arc has a radius of 130.00 feet and a long chord of North 34°17'23" East, 47.69 feet); thence North 44°51'30" East, 33.38 feet; thence South 45°08'30" East, 90.00 feet; thence South 89°47'20" East, 793.57 feet; thence South 00°12'40" West, 260.00 feet; thence North 89°47'20" West, 365.00 feet; thence South 00°12'40" West, 260.00 feet; thence North 89°47'20" West, 121.89 feet; thence along the arc of a curve right 35.06 feet (which arc has a radius of 1030.00 feet and a long chord of North 3°16'06" West, 35.06 feet); thence North 89°47'20" West, 100.98 feet; thence South 00°12'40" West, 35.00 feet; thence South 04°54'24" East, 172.64 feet; thence North 89°47'20" West, 361.80 feet; thence North 00°12'40" East, 130.00 feet; thence North 89°47'20" West, 22.17 feet; thence North 00°12'40" East, 136.95 feet; thence South 89°47'20" East, 20.00 feet; thence North 00°12'40" East, 170.00 feet; thence South 89°47'20" East, 25.00 feet; thence North 00°12'40" East, 95.00 feet to the initial point of beginning.

Robert Joseph Milts
Surveyor



Subscribed and sworn to before me this 26TH day of MAY, 1978.

Charles A. Strom
Notary Public of Oregon

My Commission expires the 3RD day of MAY, 1980.

POST MONUMENTATION CERTIFICATE:

All monuments will be set on or before the 1st of December 1979.
All monuments are now set, on this 17th day of July, 1979. See Document No. 79-14775 of the Official Records of Jackson County, Oregon.

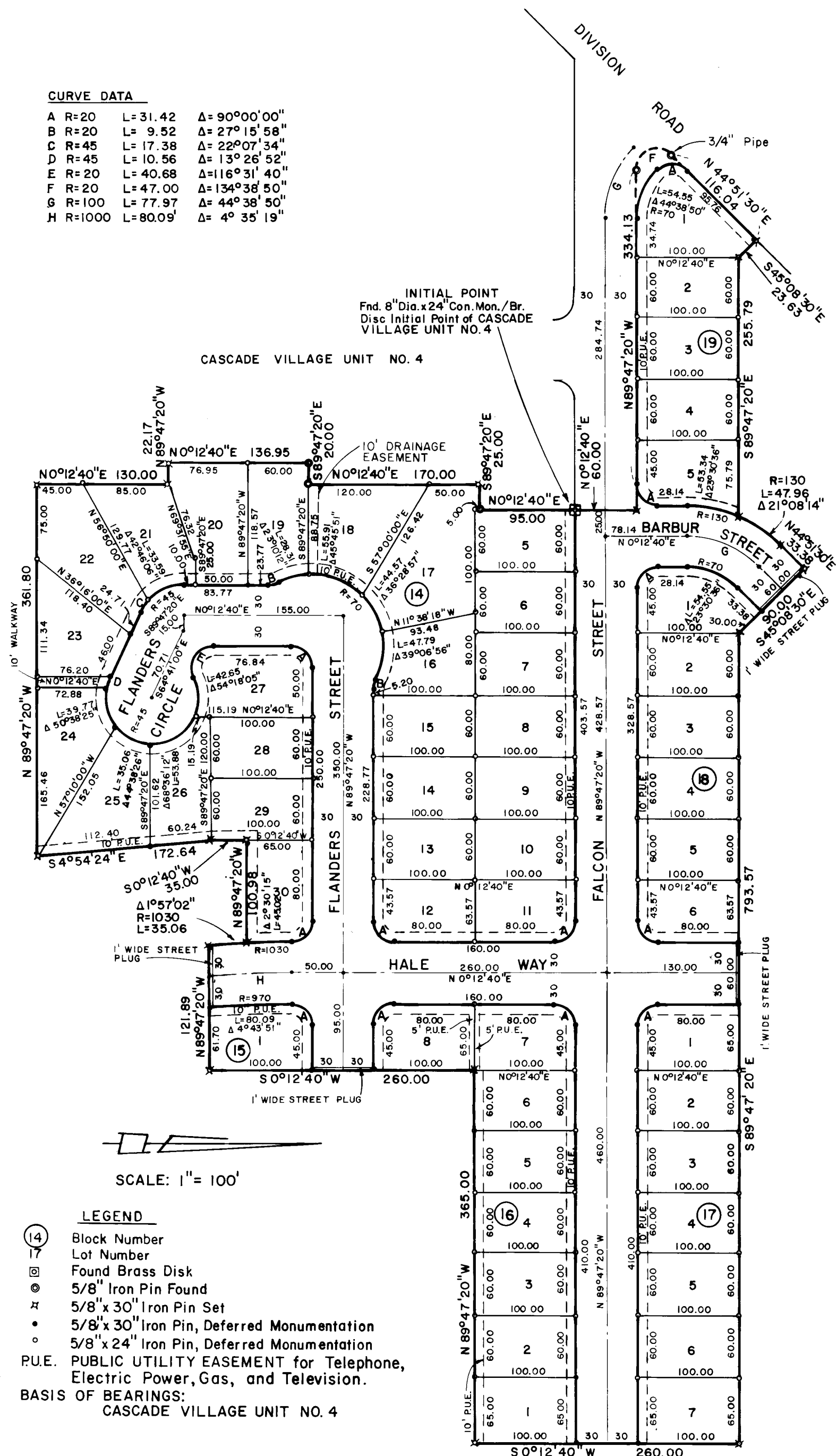
7911 Robert Joseph Milts
Surveyor

Filed for record this 20th day of September, 1978, at 4:16 o'clock P.M. and recorded in Volume 13 of plats on page 57 of records in Jackson County,

By Gaby J. Soling Deputy
Sat. Thatson County Clerk

EXACT COPY OF ORIGINAL

CURVE DATA			
A	R=20	L=31.42	Δ=90°00'00"
B	R=20	L=9.52	Δ=27°15'58"
C	R=45	L=17.38	Δ=22°07'34"
D	R=45	L=10.56	Δ=13°26'52"
E	R=20	L=40.68	Δ=116°31'40"
F	R=20	L=47.00	Δ=134°38'50"
G	R=100	L=77.97	Δ=44°38'50"
H	R=1000	L=80.09	Δ=4°35'19"



7425

Survey No. ~~7425~~

7425

SURVEY NARRATIVE TO COMPLY WITH O.R.S. 209.250
REVISED BY CHAPTER 555, O.L. 1963

SUBJECT: CASCADE VILLAGE, UNIT NO. 8

FOR: Commonwealth Properties, Inc.
Amfac Plaza - P. O. Box 1420
Portland, Oregon 97207

PURPOSE: To survey and monument a subdivision adjacent to the east boundary of CASCADE VILLAGE, UNIT NO. 4 in White City, Jackson County, Oregon.

PROCEDURE: Recovered monuments previously established in the survey of CASCADE VILLAGE, UNIT NO. 4, thereby establishing the west boundary. The location of the easterly boundary was determined from monuments established by Recorded Survey No. 116.

REGISTERED
PROFESSIONAL
LAND SURVEYOR

Robert Joseph Milts

OREGON
SEPTEMBER 23, 1977
ROBERT JOSEPH MILTS
No. 1270

JACKSON COUNTY
RECEIVED
AUG 3 1978
SURVEYOR

7425