

THE OLD HELMAN RANCH SUBDIVISION

IN THE N.W. 1/4 OF SECTION 4, T. 39 S., R. 1 E., W.M.
ASHLAND, OREGON

DEDICATION

KNOW ALL MEN BY THESE PRESENTS that we, Thomas E. Whittle and Harold C. Munson are the owners in fee simple of the lands hereon described and that we have subdivided the same into lots, blocks, and streets as shown hereon, and the number and size of the lots and the lengths of all lines are plainly set forth, and that this plat is a correct representation of the said subdivision, and we do dedicate to the public for public use all streets shown hereon, together with all easements as shown hereon, and we do hereby designate said subdivision as THE OLD HELMAN RANCH SUBDIVISION.

IN WITNESS WHEREOF, We have set our hands and seals this 26 day of July, 1977

Thomas E. Whittle
Thomas E. Whittle

Harold C. Munson
Harold C. Munson

STATE OF OREGON)
County of Jackson)

Personally appeared the above named Thomas E. Whittle and Harold C. Munson and acknowledged the foregoing instrument to be their voluntary act and deed. Before me:

My Commission expires the 27th day of June, 1980.

Patricia Spord
Notary Public for Oregon

I certify that pursuant to authority granted to me by the Ashland Planning Commission in open meeting of January 11, 1976, the above plat is hereby approved by the Ashland Planning Commission. Dated this 29th day of August, 1978.

Attest: Yes Sherk
President

Allen A. Alamy
Secretary

Examined and approved this 23 day of August, 1978.

Allen A. Alamy
City Engineer

This plat and the dedication hereof is subject to the condition that Talent Irrigation District's obligation to deliver water is limited to delivery at the point indicated on the plat and is further subject to the statutory power, rules and regulations of Talent Irrigation District. Examined and approved by the Talent Irrigation in regular session this _____ day of _____, 1977.

President

Secretary

Examined and approved this 5 day of Sept, 1978

By Hans Herdes
Deputy

Ray Stewart
Director of Assessment and Taxation

For order of the County Court approving this plat see Volume _____ page _____ of County Commissioner's Journal of Proceedings.

by Thomas D. Jewett
Deputy

Pat Watson
County Clerk

Filed for record this the 14th day of September, 1978 at 11:12 O'Clock A.M. and recorded in Volume 13 of Plat at page 56 of Records of Jackson County, Oregon.

by Thomas D. Jewett
Deputy

Pat Watson
County Clerk

POST MONUMENTATION CERTIFICATE

Street Center Monuments will be set on or before the 1st day of September, 1979.

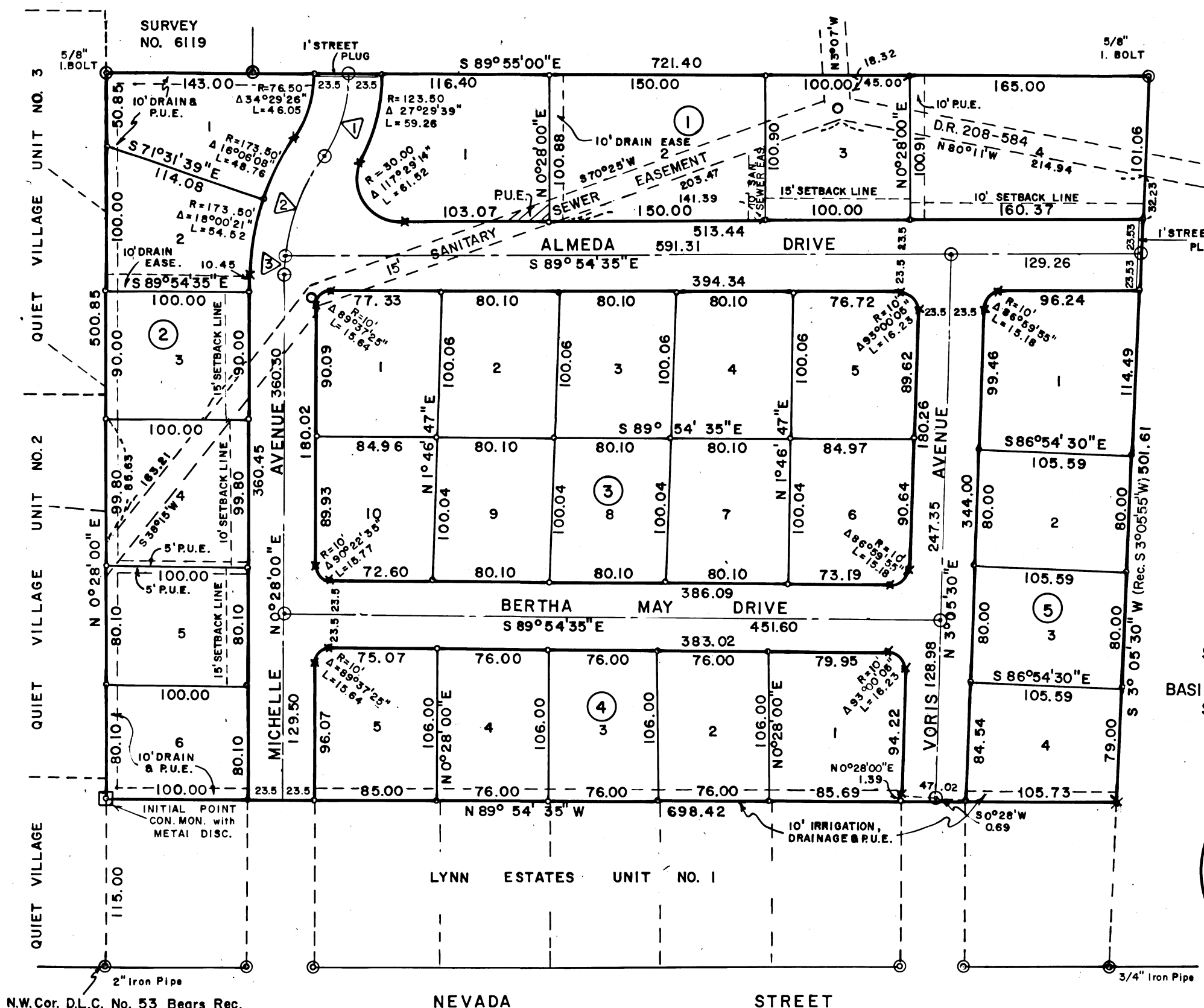
Street Center Monuments are now set on this 2 day of APRIL, 1982. See Document No. 82-04790 of the Official Records of Jackson County, Oregon.

This is to certify that this tracing is an exact copy of the original plat.

Verlyn Thomas
Surveyor

0247

Verlyn Thomas
Surveyor



LEGEND

- ⊙ Monument Found
- ✕ 5/8x30" Iron Pin set Flush
- 5/8x24" Iron Pin set Flush
- ⊙ Street Center Monuments (upon Constr. Completion)
- P.U.E. Public Utility Easement & Cable T.V.

SURVEYOR'S CERTIFICATE

STATE OF OREGON)
County of Jackson)

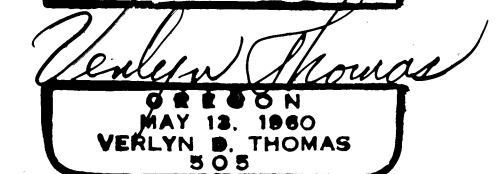
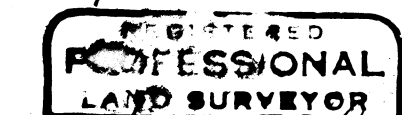
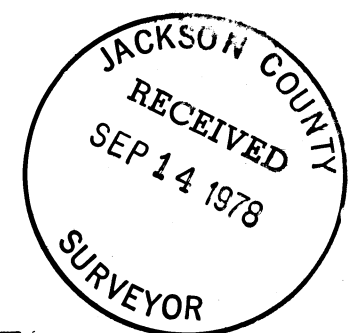
I, Verlyn Thomas, a duly registered Surveyor of the State of Oregon, being first duly sworn, do hereby certify that I have correctly surveyed and marked with proper monuments as provided by law the tract of land hereon shown and the said plat is a correct representation of the same, and the following is an accurate description of the boundary lines: Commencing at a 2" iron pipe monumenting the Initial Point of LYNN ESTATES UNIT NO. 1 in the City of Ashland, Jackson County, Oregon, from which the Northwest corner of Donation Land Claim No. 53, Township 38 South, Range 1 East, Willamette Meridian, said County and State, bears record North 1984.64 feet and record East, 1596.02 feet, thence North 0° 28' 00" East 115.00 feet to a concrete monument with metal disc for Initial Point of Beginning; thence North 0° 28' 00" East, 500.85 feet; thence South 89° 55' East, 721.40 feet to an iron bolt monumenting the Southeast corner of that tract described in Document No. 75-16190 of the Official Records of Jackson County, Oregon; thence South 3° 05' 30" West, 501.61 feet to the Northeast corner of said LYNN ESTATES UNIT NO. 1; thence North 89° 54' 35" West, 698.42 feet (record North 89° 55' West, 698.08 feet) to the Initial Point of Beginning.

Subscribed and sworn to before me this 9th day of September, 1977.

Kenneth W. Pond
Notary Public for Oregon

My Commission expires the 8th day of December, 1980.

STREET CURVE DATA	
▷ R=100.00	⊙ R=150.00
L=60.20	L=16.25
Δ 34°29'26"	Δ 6°12'30"
▷ R=150.00	
L=73.04	
Δ 27°53'56"	



7415

8R/10