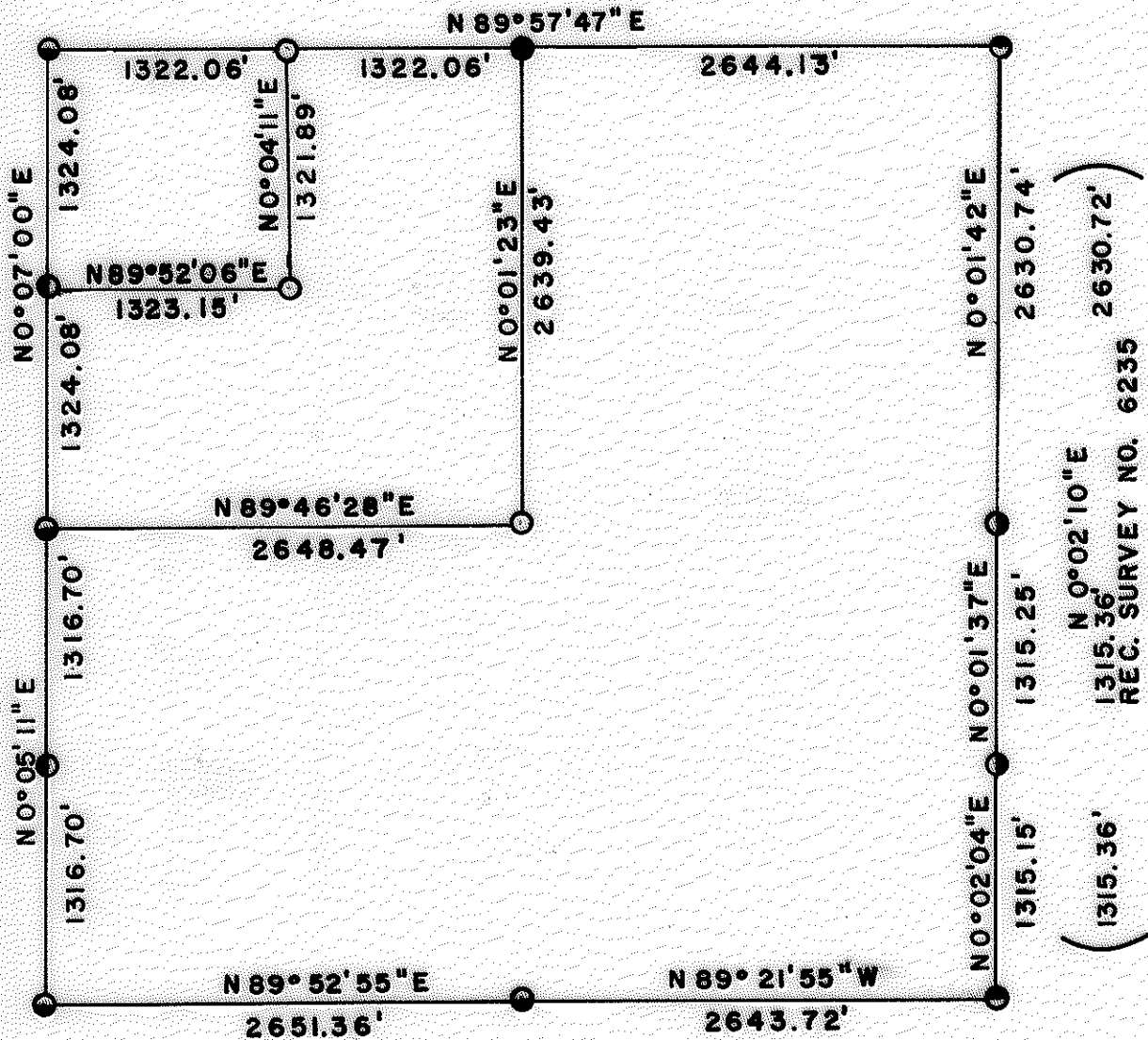


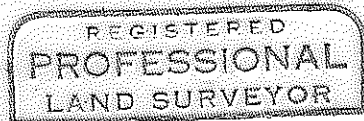
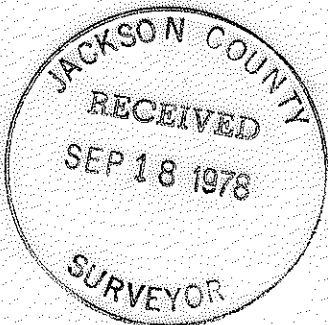
S12 T35S R1E WM

7412

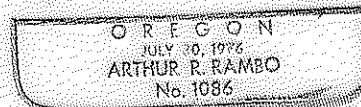


- ⊙ FD. BLM BRASS CAP
- SET 1 1/2" ALUM. CAP ON 5/8" X 30" REBAR
- FD. COUNTY SURVEY MONUMENT
- ⊙ FD. MONUMENTS SET SURVEY NO. 6235
- SET 2 1/2" BRASS CAP ON 1" X 36" G. I. PIPE
- ⊙ FD. MONUMENTS SET SURVEY NO. 7365

SCALE: 1" = 1000'  
 AUGUST 21, 1978



*Arthur R. Rambo*



( 1315.36' )  
 N 0° 02' 10" E  
 1315.36'  
 REC. SURVEY NO. 6235  
 2630.72'

7412

S12 35 1E (T.L. 5/00)

7412

Bearing South half of South half  
0° 02' 04" E  
0.00 ft. S 1/16 between S 12 T 35 S R 1 E  
and S 7 T 35 S R 2 E  
1315.15 ft. S.E. Corner

South Line: Bearing East half N 89° 21' 55" W  
0.00 ft. S.E. Corner  
2643.72 ft. S 1/4 Corner

Bearing West half S 89° 52' 55" W  
0.00 ft. S 1/4 Corner  
2651.36 ft. S.W. Corner

West Line: Bearing South half N 0° 05' 11" E  
0.00 ft. S.W. Corner  
1316.70 feet S 1/16 S11 and S12 T 35 S R 1 E  
2633.40 feet W 1/4 Corner

Bearing North N 0° 07' 00" E  
0.00 ft. W 1/4 Corner  
1324.08 ft. N 1/16 Corner between S11 and S12  
T 35 S R 1 E  
2648.16 ft. N.W. Corner

Interior Lines: Ran from West 1/4 Corner N 89° 46' 28" E  
2648.47 ft. set C 1/4 Corner 1 1/2 in. Aluminum Cap  
on 5/8 x 30 in. rebar stamped:

LS 1086  
C 1/4 + S12  
T35SR1E

Scribed bearing trees:

6 in. Madrone N 9° 54' W 27.1 feet  
C 1/4 S12 LS 1086 upper face BT lower face  
9 in. Madrone S 42° 48' W 51.44 feet  
C 1/4 S12 LS 1086 upper face BT lower face  
Thence N 0° 01' 23" E 2639.43 feet to N 1/4  
Corner S12

Ran from North 1/16 Corner between S11 and S12  
N 89° 52' 06" E 1323.15 feet set N.W. 1/16  
Corner S12 1 1/2 in. Aluminum Cap on 5/8 x 30 in.  
rebar stamped:

LS 1086  
NW 1/16 + S12  
T35SR1E

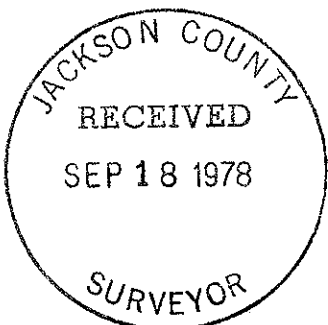
Scribed bearing trees:

10 1/2 in. Madrone N 29° 56' W 20.3 feet  
N.W. 1/16 S12 LS 1086 upper face B.T. lower face  
7 in. Douglas Fir S 46° 33' W 8.2 feet  
N.W. 1/16 S12 LS 1086 upper face B.T. lower face  
Thence N 0° 04' 11" E 1321.89 feet to the W 1/16  
Corner between S1 and S12 T 35 S R 1 E

REGISTERED  
PROFESSIONAL  
LAND SURVEYOR

*Arthur R. Rambo*

OREGON  
JULY 30, 1976  
ARTHUR R. RAMBO  
No 1086



7412

7412

SECTION 12, TOWNSHIP 35 SOUTH, RANGE 1 EAST  
WILLAMETTE MERIDIAN

Survey Narrative to comply with O.R.S. 209.250

Survey for: Medford Resources Corporation  
P. O. Box 550  
Medford, Oregon 97501

Survey by: Arthur R. Rambo LS 1086

Bearing: From Survey Number 7365

Purpose: To monument corners and mark property lines

Procedure

A search in the field revealed the following evidence:

- N.W. Corner, W 1/4 corner and S.W. Corner as described in Survey Number 7365
- S 1/4 Corner C.S.B.C. with BT's set from original evidence
- S.E. Corner U.S.B.C. with BT's set from original evidence
- S 1/16 Corner between S 12 T 35 S R 1 E and S 7 T 35 S R 2 E a 2 in. Bronze cap per survey number 6235
- E 1/4 Corner 2 in. Bronze cap per Survey Number 6235
- N.E. Corner U.S.B.C. with BT's set from original evidence
- N 1/4 no evidence found, spent two man days searching

Ran survey beginning and closing on Survey Number 7365 with T-16 Theodolite and 3805A E.D.M.

North Line: Bearing N 89° 57' 47" E  
0.00 feet N.W. Corner  
1322.06 feet set W 1/16 between S 1 and S12  
T 35 S R 1 E 1 1/2" Aluminum Cap on  
5/8" x 30" rebar stamped:

LS 1086  
S1  
W1/16 +  
S12  
T35SR1E

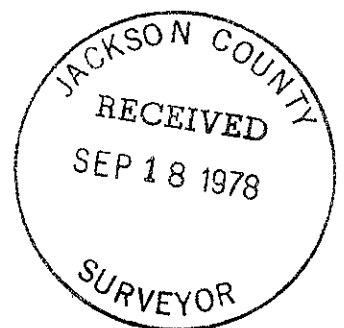
Scribed bearing trees:  
8 1/2 in. Douglas Fir N 24° 53' W 32.5 feet  
W 1/16 S1 LS 1086 upper face B.T. lower face  
8 in. White Fir S 6° 52' E 14.8 feet  
W 1/16 S12 LS 1086 upper face B.T. lower face  
2644.12 feet set 1/4 Corner between S1 and  
S12 T 35 S R 1 E 2 1/2 in. Brass Cap on  
1 in. x 36 in. G.I. pipe stamped:

LS 1086  
S1  
1/4 +  
S12  
T35SR1E

Scribed bearing trees:  
8 in. Maple S 66° 27' E 36.2 feet  
1/4 S12 LS 1086 upper face B.T. lower face  
11 1/2 in. Madrone N 3° 44' W 14.6 feet  
1/4 S1 LS 1086 upper face B.T. lower face  
5288.25 feet N.E. Corner

East Line: Bearing North half S 0° 01' 42" W  
0.00 ft. N.E. Corner  
2630.74 ft. E 1/4 Corner

Bearing North half of South half  
S 0° 01' 37" W  
0.00 ft. East 1/4 Corner  
1315.25 ft. S 1/16 between S 12 T 35 S R 1 E  
and S 7 T 35 S R 2 E



7412