

LAZY CREEK ESTATES

LOCATED IN
S.W. 1/4 SECTION 28, TOWNSHIP 37 SOUTH, RANGE 1 WEST, WILLAMETTE MERIDIAN
CITY OF MEDFORD, JACKSON COUNTY, OREGON

DEDICATION

KNOW ALL MEN BY THESE PRESENTS that we, John A. and Helen Hoffbuhr husband and wife, are the owners of a fee simple estate in the lands herein described and that we have subdivided the same into lots, blocks, and streets as shown hereon and the number and size of the lots and the length of all lines are plainly set forth and that this plat is a correct representation of the said subdivision and we do hereby dedicate to the public for public use all streets hereon together with all easements as shown hereon, and we hereby grant to the City of Medford in fee simple, those areas portrayed and designated as street plugs, and we do hereby designate said subdivision as LAZY CREEK ESTATES SUBDIVISION.

IN WITNESS WHEREOF, we have hereunto set our hands and seals this 20th day of October, 1977.
STATE OF OREGON }
County of Jackson } SS
October 20, A.D. 1977.

Personally appeared the above named John A. Hoffbuhr and Helen C. Hoffbuhr, husband and wife, and acknowledged the foregoing instrument to be their voluntary act and deed.

My Commission expires the 20th day of October, 1979.

I certify that, pursuant to authority granted to us by the Medford Planning Commission in open meeting of July 13, 1978, the above plat is hereby approved by the Medford Planning Commission Dated this 30th day of August, 1978.

Examined and approved by the Directors of Medford Irrigation District in regular session this 1st day of November, 1977.

Examined and approved this 13th day of July, 1978.

Examined and approved this 12th day of May, 1978.

By *Ken H. Hill* Deputy
By *Ross E. Stewart* County Assessor

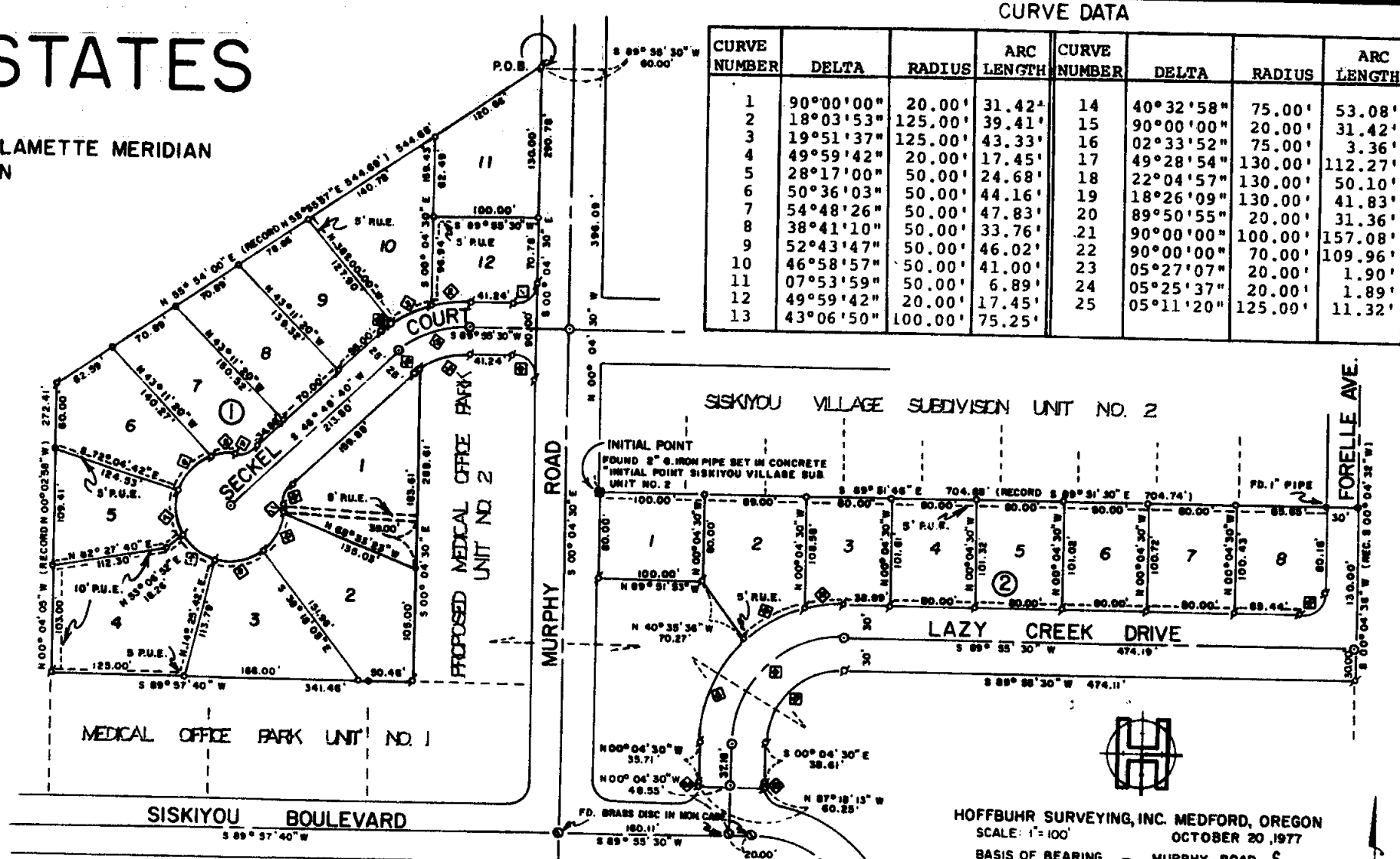
All taxes paid in full to date this the 25th day of May, 1978.

For Order of the County Court approving this plat see Volume _____ page _____ of County Commissioners Journal of Proceedings.

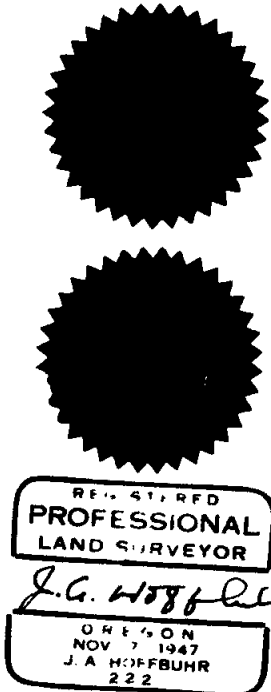
By *Reuben A. Poling* Deputy
By *Pat Watson* County Clerk

Filed for record this the 6th day of September, 1978 at 2:21 O'Clock P.M. and recorded in Volume 13 of Plats at page 53 of Records of Jackson County, Oregon.

By *Reuben A. Poling* Deputy
By *Pat Watson* County Clerk



- SET 5/8" x 24" IRON REIN. PIN
- SET 5/8" x 30" IRON REIN. PIN
- FD. 5/8" IRON PIN
- SET BRASS DISC IN MONUMENT CASE
- ⊕ AN EASEMENT FOR PUBLIC UTILITIES, CABLE TELEVISION, and IRRIGATION
- ② BLOCK NUMBER



SURVEYOR'S CERTIFICATE

STATE OF OREGON }
County of Jackson } SS

I, J.A. Hoffbuhr, a duly registered Surveyor of the State of Oregon, being first duly sworn, do hereby certify that I have correctly surveyed and marked with the proper monuments as provided by law the tract of land hereon shown and the said plat is a correct representation of the same, and the following is an accurate description of the boundary lines:

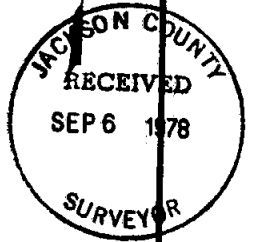
Beginning at a 2 inch pipe set in concrete being the initial point of Siskiyou Village Subdivision, Unit No. 2, according to the Official Plat thereof, now of Record in Jackson County, Oregon; thence along the South line of said subdivision South 89° 51' 46" East 704.65 feet (Record South 89° 51' 37" East 704.74 feet); thence South 00° 04' 36" West (Record South 00° 04' 32" West) 160.00 feet; thence South 89° 55' 33" West 474.11 feet; thence along the arc of a 70.00 foot radius curve concave to the Southeast 109.96 feet (the long chord to which bears South 44° 55' 30" West 99.00 feet); thence South 00° 04' 30" East 38.61 feet; thence along the arc of a 20.00 foot radius curve concave to the Northeast 1.90 feet (the long chord to which bears South 02° 48' 04" East 1.90 feet) to intersect the North line of Medical Office Park Subdivision, Unit No. 1, according to the Official Plat thereof, to intersect the North line of said subdivision North 87° 18' 13" West 60.25 feet; thence leaving bears North 02° 38' 18" East 1.89 feet; thence North 00° 04' 30" West 35.71 feet (the long chord to which bears North 40° 35' 36" West 70.27 feet); thence North 89° 51' 53" West 190.00 feet to intersect the Easterly right of way line of Murphy Road; thence along said Easterly line North 00° 04' 30" West 80.00 feet to the initial point of beginning.

TOGETHER WITH: Commencing at a 2 inch iron pipe set in concrete being the initial point of Siskiyou Village Subdivision, Unit No. 2, according to the Official Plat thereof, now of Record in Jackson County, Oregon; thence along the Easterly right of way line of Murphy Road North 00° 04' 30" West 396.09 feet; thence South 89° 55' 30" West 60.00 feet to a point on the West right of way line of Murphy Road, the point of beginning; thence along the Westerly line of Murphy Road South 00° 04' 30" East 290.78 feet; thence leaving said right of way line along the arc of a 20.00 foot radius curve concave to the Southwest 31.42 feet (the long chord to which bears North 45° 04' 30" West 28.28 feet); thence South 89° 55' 30" West 41.24 feet; thence along the arc of a 75.00 foot radius curve concave to the Southeast 53.08 feet (the long chord to which bears South 69° 39' 01" West 51.98 feet); thence South 00° 04' 30" East 288.61 feet; thence South 89° 57' 40" West 341.46 feet; thence North 00° 04' 05" West (Record North 00° 02' 58" West) 272.41 feet; thence North 55° 54' 00" East 544.68 feet (Record North 55° 55' 57" East 544.69 feet) to the point of beginning.

Subscribed and sworn to before me this 20th day of October, 1977. My Commission expires the 20th day of October, 1979.

By *Carolyne Radman* Notary Public for Oregon

I HEREBY CERTIFY THAT THIS PLAT IS AN EXACT PHOTOCOPY OF THE ORIGINAL.
J.A. Hoffbuhr SURVEYOR



7408

8-R