

# LE ROY ESTATES SUBDIVISION

LOCATED IN SECTION 14, T. 37 S., R. 2 W., W. M.  
CITY OF MEDFORD, JACKSON COUNTY, OREGON

## DEDICATION

KNOW ALL MEN BY THESE PRESENTS, That we, James Michael LeRoy and Paula M. LeRoy, are the owners in fee simple of lands hereon described, and that we have subdivided the same into lots and streets as shown hereon, and the number and size of the lots and lengths of all lines are plainly set forth, and that this plat is a correct representation of the said subdivision, and we do hereby dedicate to the public for public use all streets shown hereon, together with all easements as shown hereon, and we do hereby designate said Subdivision as LE ROY ESTATES SUBDIVISION.

IN WITNESS WHEREOF, We have set our hands and seals this 14<sup>th</sup> day of JUNE, 1978.

James M. LeRoy  
James Michael LeRoy

Paula M. LeRoy  
Paula M. LeRoy

STATE OF OREGON )  
County of Jackson )

Personally appeared the above named James Michael LeRoy and Paula M. LeRoy and acknowledged the foregoing instrument to be their voluntary act and deed. Before me:

Kenneth W. Bond  
Notary Public for Oregon

My Commission expires the 8<sup>th</sup> day of DECEMBER, 1980.

I certify that pursuant to authority granted to us by the Medford Planning Commission in open meeting of August 24, 1978, the above plat is hereby approved by the Medford Planning Commission. Dated this 30 day of August, 1978.

Walter H. Harrison  
President

John M. Eisenhard  
Secretary

Examined and approved by the Rogue River Valley Irrigation District in regular session this 7 day of JUNE, 1978.

Otto Bohmert  
President

Le. Lindleton  
Secretary

Examined and approved this 16<sup>th</sup> day of August, 1978.

Donald C. Walk  
City Engineer

Examined and approved this 1st day of September, 1978.

by Vaid K. Hill  
Deputy

Ray E. Stewart  
Director of Assessment and Taxation

For order of the County Court approving this plat see Volume \_\_\_\_\_ page \_\_\_\_\_ of County Commissioner's Journal of Proceedings.

by Ruby A. Poling  
Deputy

Pat Watson  
County Clerk

Filed for record this the 6<sup>th</sup> day of September, 1978 at 2:19 O'clock P.M. and recorded in Volume 13 of Plats at page 52 of Records of Jackson County, Oregon.

by Ruby A. Poling  
Deputy

Pat Watson  
County Clerk

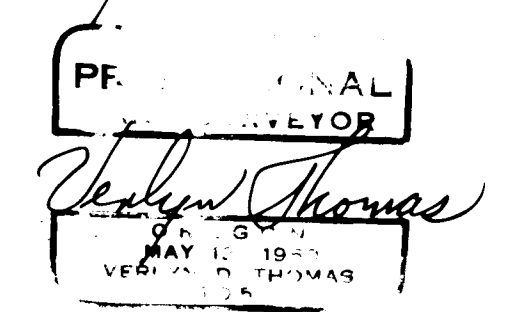
## SURVEYOR'S CERTIFICATE

STATE OF OREGON )  
County of Jackson )

I, Verlyn Thomas, a duly Registered Surveyor of the State of Oregon, being first duly sworn, do hereby certify that I have correctly surveyed and marked with proper monuments as provided by law the tract of land hereon shown and the said plat is a correct representation of the same, and the following is an accurate description of the boundary lines:

Beginning at a concrete monument with brass cap monumenting the Northeast corner of VALLEY CENTER SUBDIVISION, from which the corner common to Sections 11, 12, 13, 14 in Township 37 South, Range 2 West, Willamette Meridian Jackson County, Oregon, bears North 0°11'05" West, 200.58 feet (record North 0°06' West, 200.74 feet); thence South 0°03'13" East, 207.37 feet (record South 0°06' East, 207.62 feet) to the Southeast corner of Lot 1, Block 4, said Subdivision; thence North 89°59'05" West, 414.69 feet (record West, 414.72 feet) to the Southwest corner thereof; thence South 89°59'55" West, 261.23 feet (record West, 261.38 feet) to the Southwest corner of Lot 5, Block 3, said Subdivision; thence North 2°29'53" East, 207.78 feet (record North 2°29'00" East, 207.82 feet) to the Northwest corner thereof; thence South 89°58'20" East, 666.67 feet (record East, 666.72 feet) to the Initial Point of Beginning.

Verlyn Thomas  
Surveyor

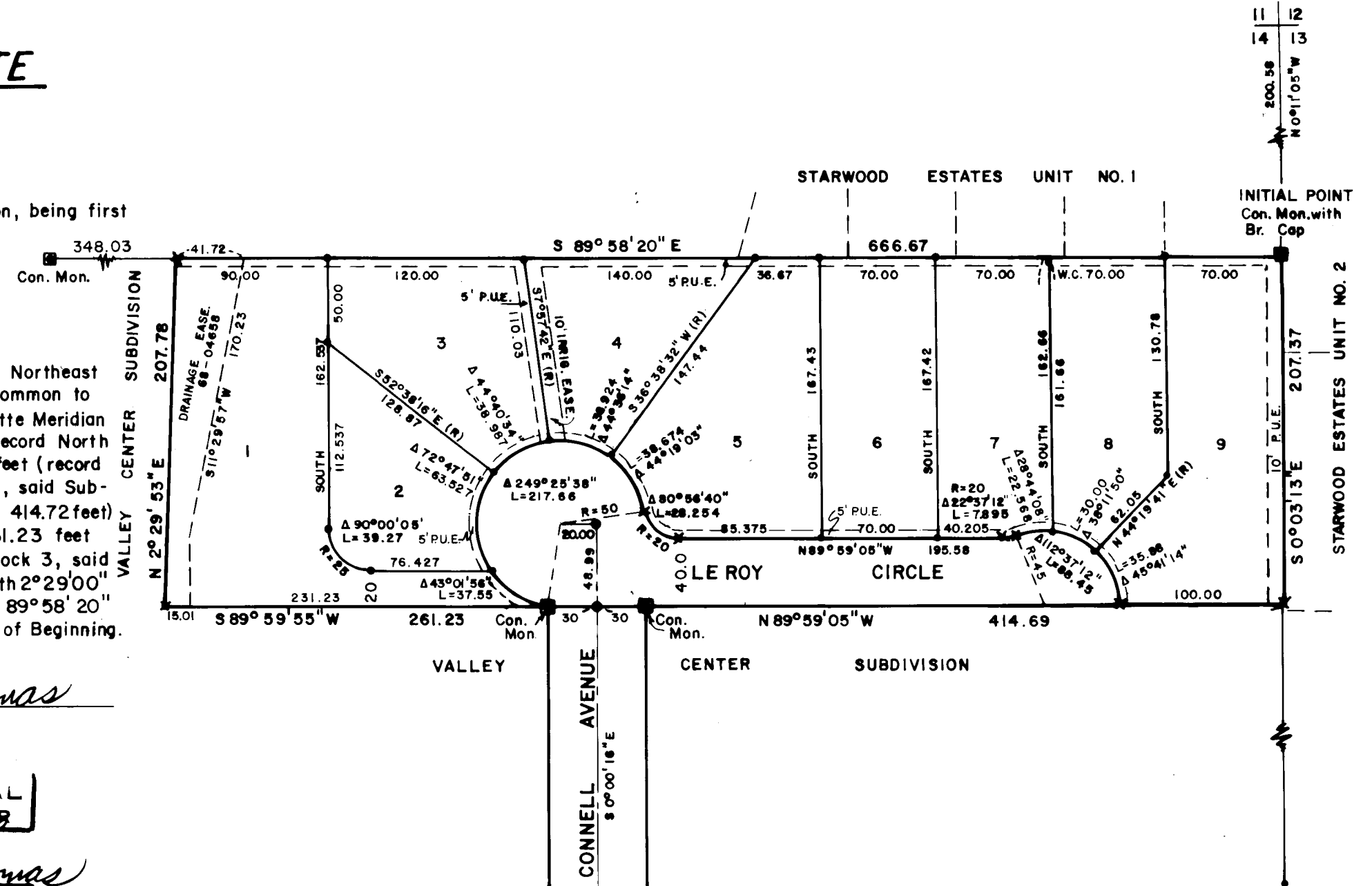


Verlyn Thomas  
Notary Public for Oregon

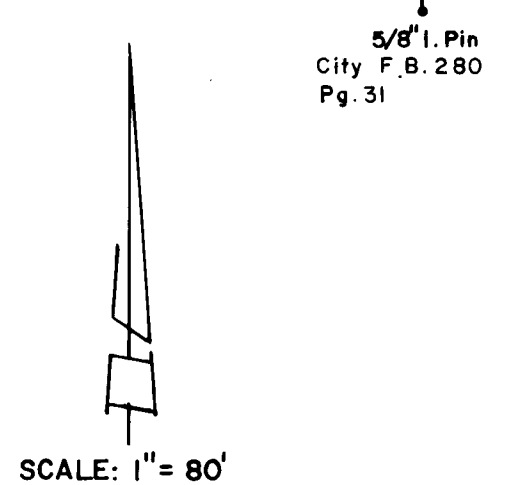
Subscribed and sworn to before me this 5<sup>th</sup> day of JUNE, 1978.

Kenneth W. Bond  
Notary Public for Oregon

My Commission expires the 8<sup>th</sup> day of DECEMBER, 1980.



- LEGEND**
- 5/8" x 24" Iron Pin Set Flush
  - X 5/8" x 30" Iron Pin Set Flush
  - o Monument Found Per Record
  - ⊙ Street Monument with Metal Disc.
  - P.U.E. Public Utility Easement & T.V. Cable
  - (R) Radial
- BASIS OF BEARINGS:**  
STARWOOD ESTATES UNIT NO. 1



This is to certify that this tracing is an exact copy of the original plat.

Verlyn Thomas  
Surveyor

