

7406

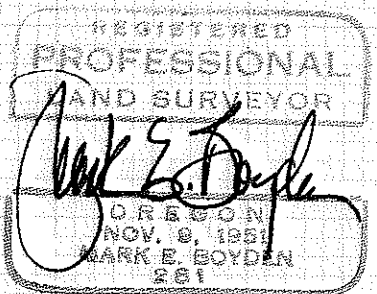
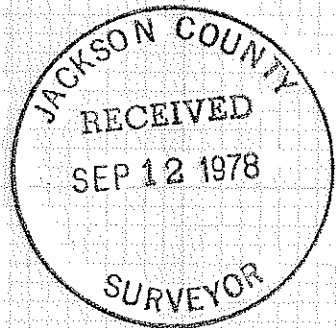
SURVEY FOR:

WHITE CITY CORP.

LOCATED IN THE SOUTH-HALF OF SECTION 18, T. 36 S., R. 1 W., W.M.

BY: MARK E. BOYDEN

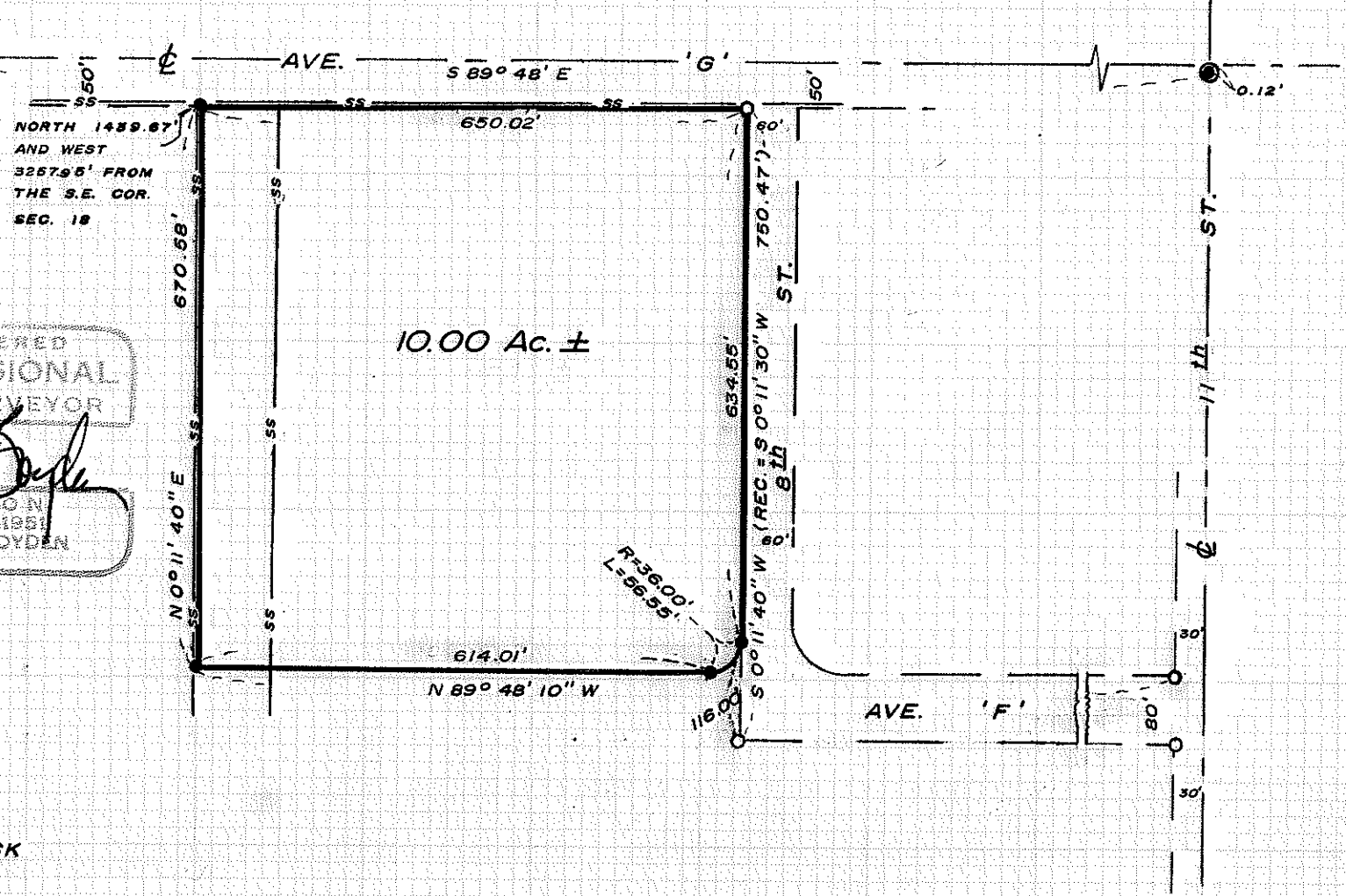
AUGUST 31, 1978



SCALE: 1" = 200'

BASIS OF BEARINGS:
RECORDED SURVEY NO. 6852

- FD. 3/4" IRON PIN
- SET 3/4" X 24" RE-BAR
- ⊙ FD. ARMY ENGINEER BR. DISK IN CONC. PAVEMENT



7406

S18 36 1W
(T. 36 S., R. 1 W.)

7406

Survey No. 7406

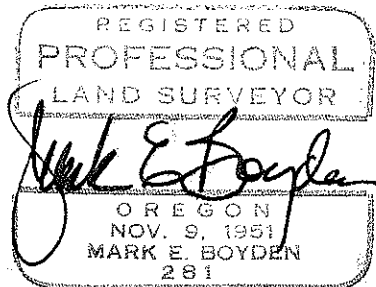
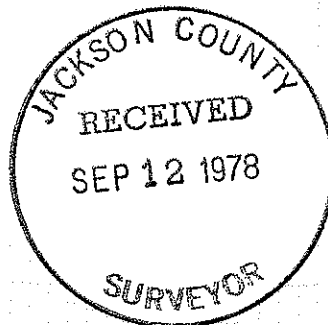
SURVEY NARRATIVE TO COMPLY WITH O.R.S. 209,250

FOR: White City Corporation
White City, Oregon

PURPOSE: To monument and describe a tract proposed to be conveyed, being located in the South-half of Section 18, T36SR1W, W.M.

PROCEDURE: From monuments found set on Recorded Survey No. 4096 and near the centerline of Avenue 'G', set corner monuments at positions shown on the annexed map.

August 31, 1978



(TL 200) S18 36 1W