

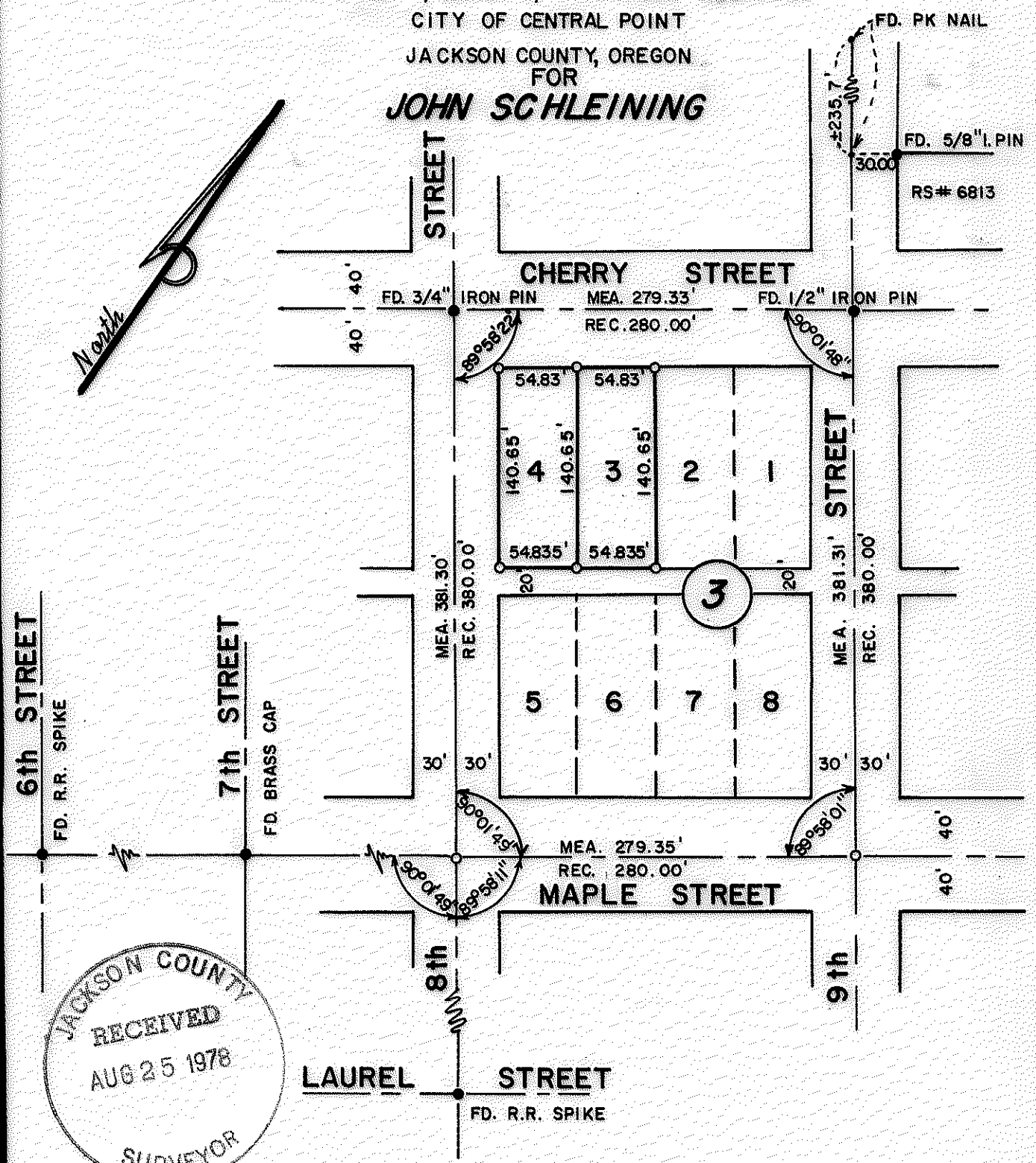
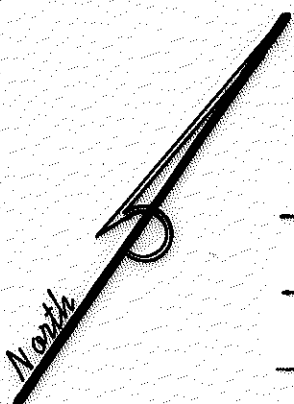
7386

9882

# MAP OF SURVEY

LOCATED IN  
N.W. 1/4 of the S.W. 1/4 of Sec 2, T37S, R2W. W.M.  
LOTS 3 AND 4, BLOCK 3, PATTISON ADDITION  
CITY OF CENTRAL POINT

## JACKSON COUNTY, OREGON FOR JOHN SCHLEINING



JACKSON COUNTY  
RECEIVED  
AUG 25 1978  
SURVEYOR

REGISTERED  
PROFESSIONAL  
LAND SURVEYOR

*J. A. Hoffbuhr*

OREGON  
NOV 7 1947  
J. A. HOFFBUHR  
222

HOFFBUHR SURVEYING, INC. MEDFORD, OREGON  
SCALE: 1" = 100' AUGUST 24, 1978

o = SET 5/8" x 24" IRON PIN

37 2W 2CB  
(T.L. 1600)

7386

SURVEY NO. 7386

SURVEY NARRATIVE TO COMPLY WITH PARAGRAPH 209.250  
OREGON REVISED STATUTES

SURVEY FOR: John Schleining  
756 Park Street  
Ashland, Oregon 97520

PURPOSE: To survey and monument Lots 3 and 4 of Block 3,  
Pattison Addition to the City of Central Point,  
Jackson County, Oregon

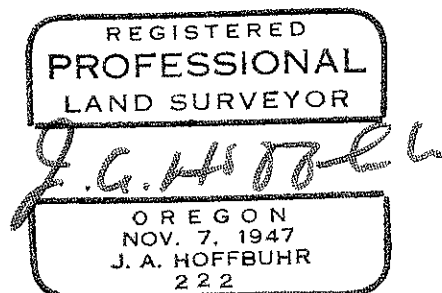
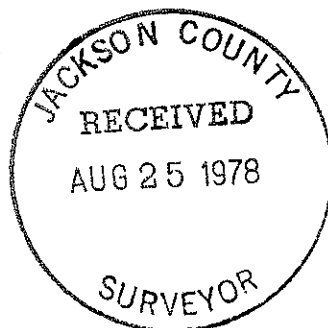
PROCEDURE: Located existing monumentation on Maple Street  
at the intersections of Sixth and Seventh Streets, on Cherry Street  
at the intersections of Eighth and Ninth Streets, and at the inter-  
section of Eighth and Laurel Streets.

The intersection of Eighth and Maple was established by pro-  
jecting the centerline control on Maple Street to intersect the  
centerline control on Eighth Street.

Centerline control established on Ninth Street during Survey  
No. 6813 was found and verified. The intersection of Ninth and  
Maple was then established by projecting this line to intersect  
the projected centerline of Maple Street.

The resulting block was measured and the lot corners established  
at proportionate measurement.

August 24, 1978



J. A. Hoffbuhr  
Hoffbuhr Surveying, Inc.