

ATWATER PARK SUBDIVISION

IN S.E. 1/4 SECTION 8, TOWNSHIP 37 SOUTH, RANGE I WEST, W.M.
CITY OF MEDFORD, COUNTY OF JACKSON, OREGON

DEDICATION

KNOW ALL MEN BY THESE PRESENTS, that we, Thomas E. Whittle and J. Robert Harris are the owners in fee simple of lands hereon described, and that we have subdivided the same into lots, blocks, and streets as shown hereon, and the number and size of the lots and lengths of all lines are plainly set forth, and that this plat is a correct representation of the said subdivision, and we do hereby dedicate to the public for public use all streets shown hereon, together with all easements as shown hereon, and we hereby grant to the City of Medford in fee simple, that area portrayed and designated hereon as a street plug. By its approval of this plat, the said City undertakes that at its discretion, it will deed the street plug for public street purposes. We do hereby designate said Subdivision as ATWATER PARK SUBDIVISION.

IN WITNESS WHEREOF, We have set our hands and seals this 5th day of October, 1977.

Thomas E. Whittle
Thomas E. Whittle

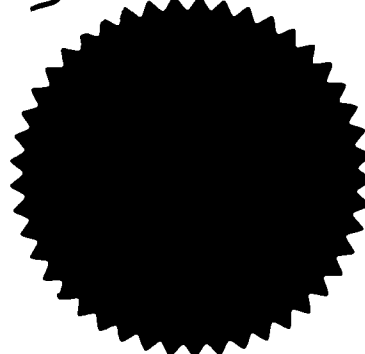
J. Robert Harris
J. Robert Harris

STATE OF OREGON)
County of Jackson)

Personally appeared the above named Thomas E. Whittle and J. Robert Harris and acknowledged the foregoing instrument to be their voluntary act and deed. Before me:

Harry ...
Notary Public for Oregon

My Commission expires the 28th day of February, 1981.



I certify that pursuant to authority granted to us by the Medford Planning Commission in open meeting of July 13, 1978, the above plat is hereby approved by the Medford Planning Commission. Dated this 26 day of July, 1978.

Walter H. ...
President

James ...
Secretary

Examined and approved by the Medford Irrigation District in regular session this 4th day of April, 1978.

Albert ...
President

James ...
Secretary

Examined and approved this 14th day of July, 1978.

Donald C. Walk
City Engineer

Examined and approved this 26th day of July, 1978.

David ...
Deputy

Ray ...
Director of Assessment and Taxation

For order of the County Court approving this plat see Volume _____ page _____ of County Commissioner's Journal of Proceedings.

Ruby A. Soling
Deputy

Pat Watson
County Clerk

SURVEYOR'S CERTIFICATE

STATE OF OREGON)
County of Jackson)

I, Verlyn Thomas, a duly registered Surveyor of the State of Oregon, being first duly sworn, do hereby certify that I have correctly surveyed and marked with proper monuments as provided by law the tract of land hereon shown and the said plat is a correct representation of the same, and the following is an accurate description of the boundary lines:

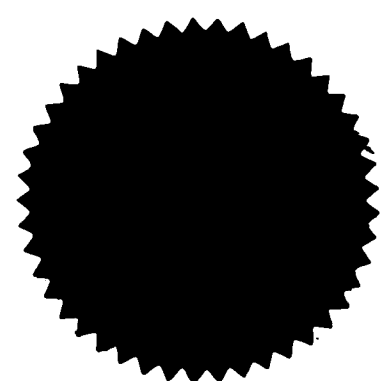
Commencing at the quarter corner common to Sections 8 and 17, Township 37 South, Range I West, Willamette Meridian, Jackson County, Oregon, thence North 0° 07' 00" West, along the North and South center line of said Section 8, a distance of 230.00 feet to the Initial Point of Beginning; thence continue North 0° 07' West, along said center line, 544.00 feet; thence South 89° 54' 00" East, 684.73 feet; thence South 0° 07' 40" West, 548.995 feet; thence North 89° 54' 00" West, 170.705 feet; thence South 0° 07' 00" East 165.00 feet to the North line of Delta Waters Road; thence North 89° 54' 00" West, along said North line, 284.00 feet; thence North 0° 07' 00" West, 170.00 feet; thence North 89° 54' West, 227.68 feet to the Initial Point of Beginning.

Verlyn Thomas
Surveyor

Subscribed and sworn to before me this 3rd day of October, 1977.

Kenneth W. Paul
Notary Public for Oregon

My commission expires the 8th day of December, 1980.



REGISTERED
PROFESSIONAL
LAND SURVEYOR

Verlyn Thomas
O R E G O N
MAY 19 1980
VERLYN S. THOMAS
S O S

POST MONUMENTATION CERTIFICATION

Deferred Monuments will be set on or before the 1st day of November, 1978.

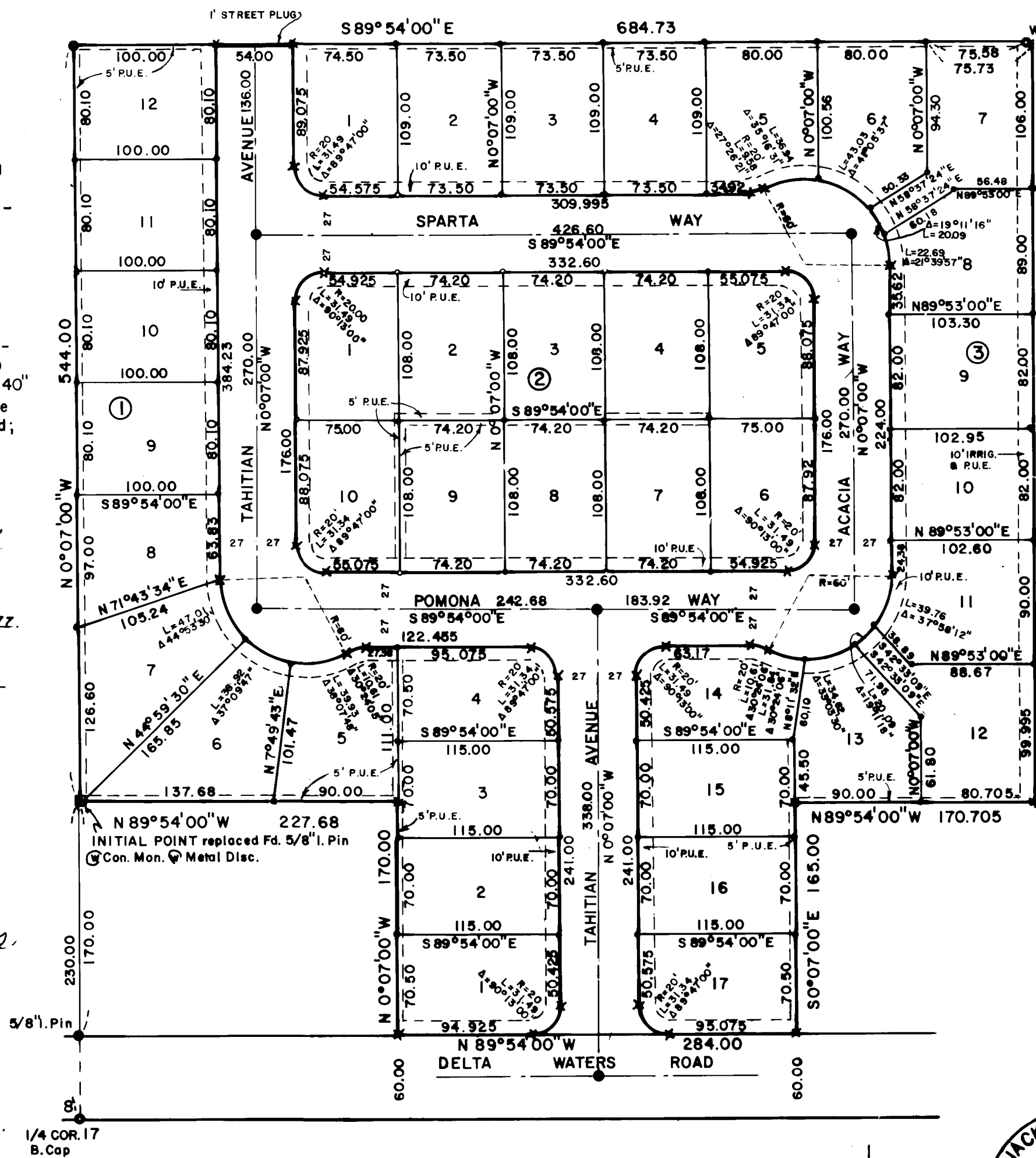
All Monuments are now set on this 5th day of FEBRUARY, 1979. See Document No. 19-0216 of the Official Records of Jackson County, Oregon.

Verlyn Thomas
Surveyor

Filed for record this the 27th day of July, 1978 at 8:30 O'Clock A.M. and recorded in Volume 13 of Plats at page 46 of Records of Jackson County, Oregon.

Ruby A. Soling
Deputy

Pat Watson
County Clerk



- LEGEND**
- Monument found per record
 - ★ 5/8" x 30" Iron Pin Set
 - 5/8" x 24" Iron Pin Set
 - ✕ 5/8" x 30" Iron Pin Deferred Monumentation
 - 5/8" x 24" Iron Pin Deferred Monumentation
 - Street Monument with Brass Disc, Deferred Monumentation
 - P.U.E. Public Utility Easement & Cable T.V.

SCALE: 1" = 80'

BASIS OF BEARINGS: Survey No. 601

7348

