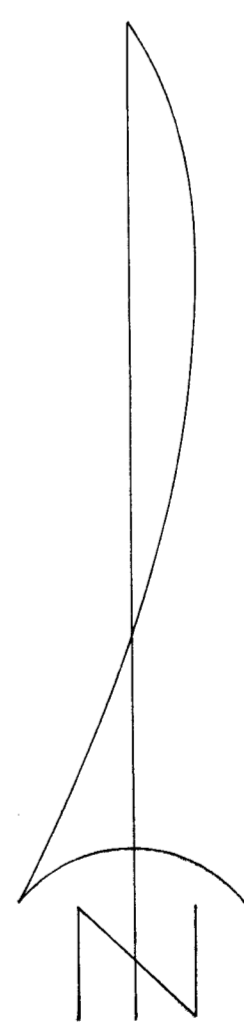
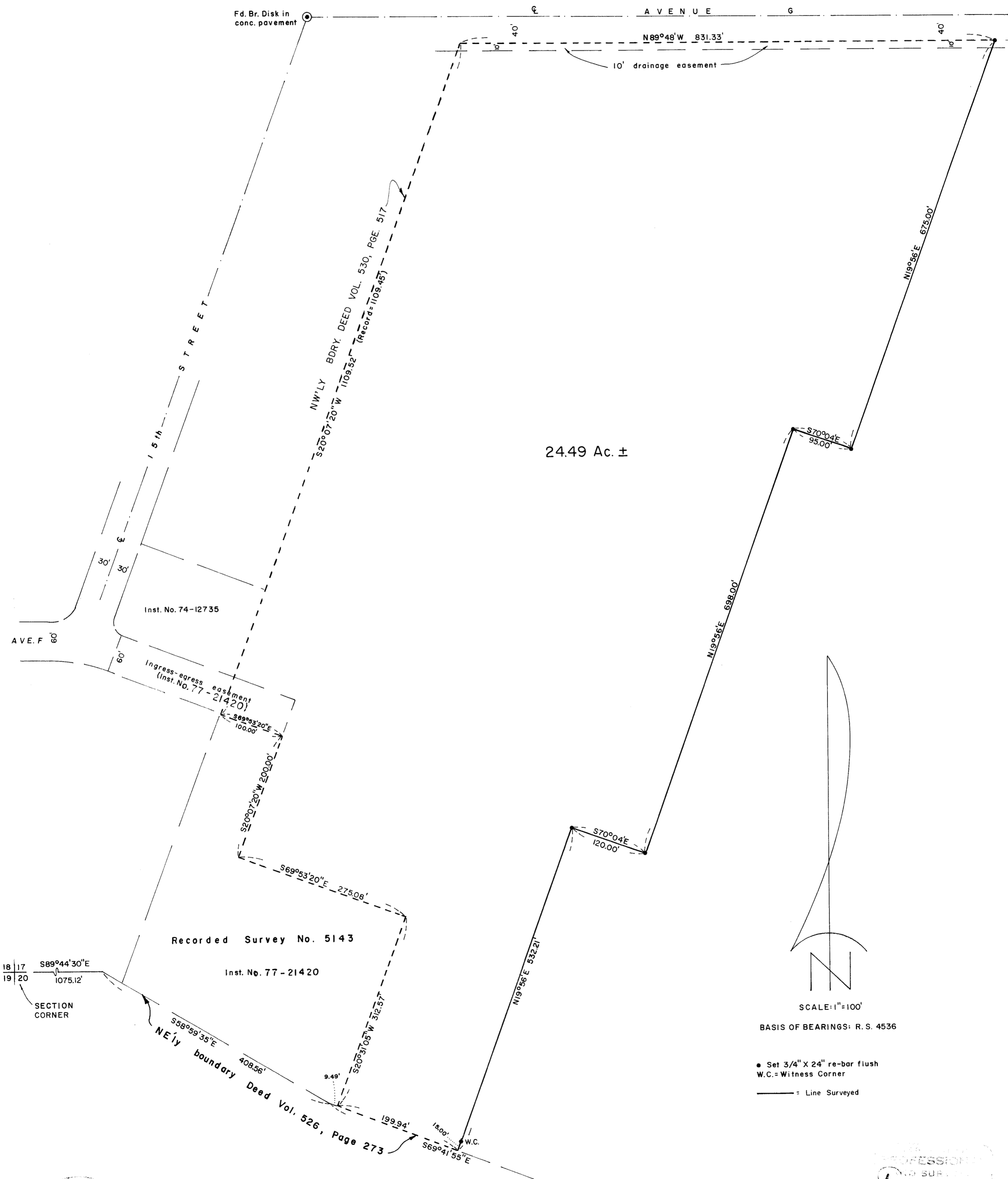


SURVEY FOR
GEORGE L. ZELLNER, Et. al.
 LOCATED IN THE SW 1/4 SEC. 17 AND THE NW 1/4 SEC. 20, T. 36S, R. 1W., WM
 BY: MARK E. BOYDEN
 FEB. 17, 1977
 Revised July 24, 1978.

7341



SCALE: 1"=100'
 BASIS OF BEARINGS: R. S. 4536

- Set 3/4" X 24" re-bar flush
- W.C. = Witness Corner
- = Line Surveyed



PROFESSIONAL
 LAND SURVEYOR
Mark E. Boyden
 NOV 1977
 MARK E. BOYDEN

7341

S17c (FL 2500) 36 1W

Survey No. 73411

SURVEY NARRATIVE TO COMPLY WITH O.R.S. 209.250

FOR: George L. Zellner, et al
c/o R. R. Dickey, Atty.
129 North Oakdale Avenue
Medford, Oregon

PURPOSE: To monument and describe a tract proposed for lease, being located in the SW 1/4 of Section 17 and the NW 1/4 of Section 20, T36SR1W, W.M.

PROCEDURE: From controls previously established on Recorded Survey Nos. 1894, 2003, 4536 and 5143, monumented the desired tract at positions shown on the annexed map.

July 24, 1978

REGISTERED
PROFESSIONAL
LAND SURVEYOR
Mark E. Boyden
OREGON
NOV. 9, 1961
MARK E. BOYDEN
281

JACKSON COUNTY
RECEIVED
JUL 24 1978
SURVEYOR