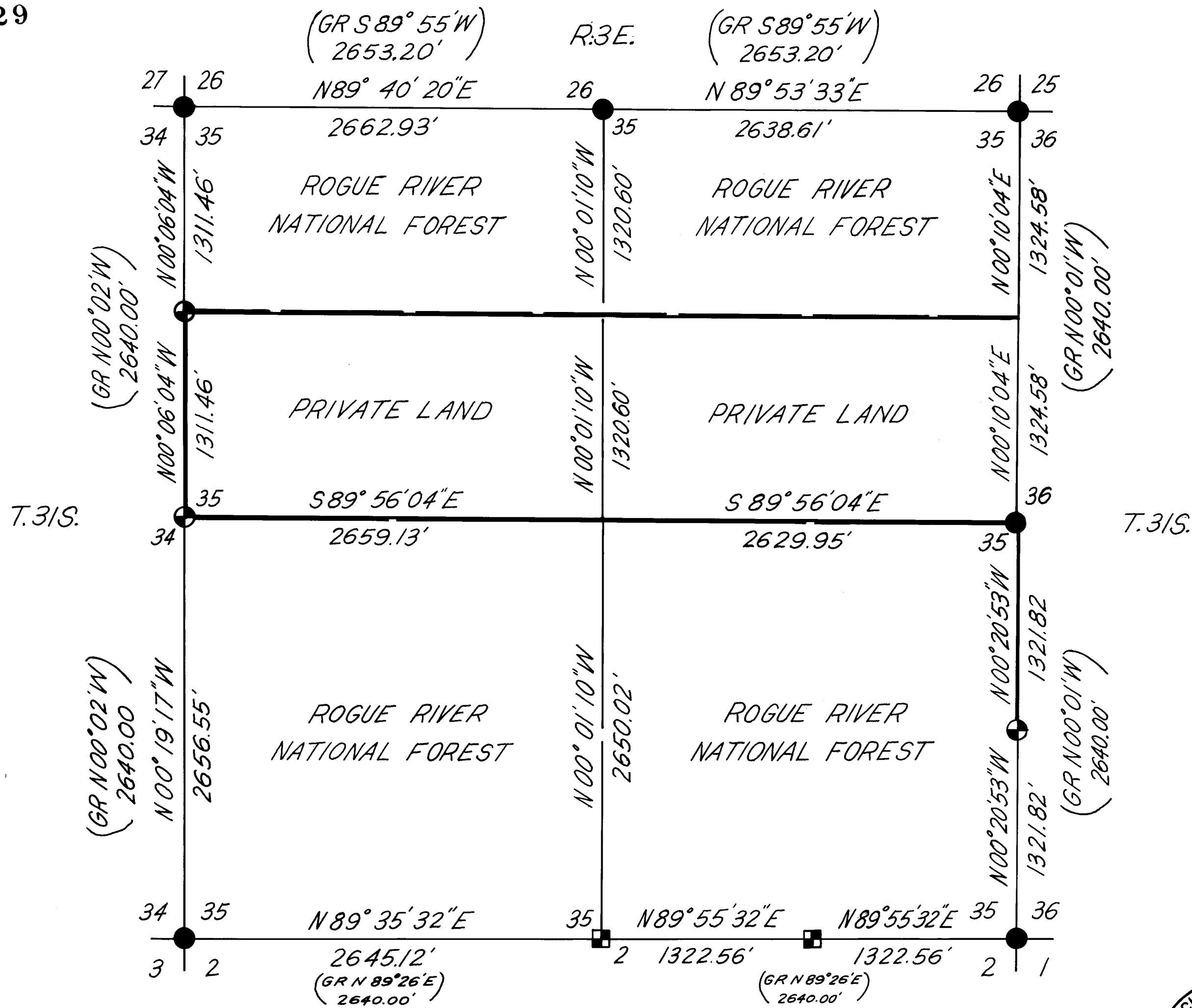
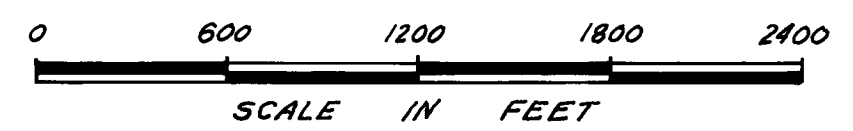


7329



MAP OF SURVEY  
 LOCATED IN  
 SEC. 35, T. 31 S., R. 3 E., W. M.  
 JACKSON COUNTY, OREGON  
 FOR  
 ROGUE RIVER NATIONAL FOREST  
 JUNE 25, 1978  
 BASIS OF SURVEY - SOLAR OBSERVATION

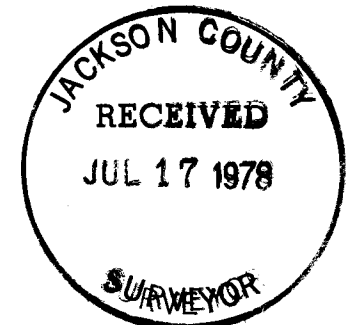


**LEGEND**

- Found Standard BLM or County surveyor monument.
- Found 1" Dia. iron post with 1 1/2" Dia. pipe expander filled with pot metal.
- ⊙ Set 2 1/2" Dia. X 30" lg. iron pipe with 2 1/2" Dia. Brass Cap.
- Section line
- - - 1/4 Sec. line
- - - 1/16 Sec. line
- National Forest Boundary

**CERTIFICATE OF SURVEY**

I, HAROLD L. CENTER REGISTRATION NO. 1071 REGISTERED PROFESSIONAL LAND SURVEYOR STATE OF OREGON, HEREBY CERTIFY THAT THIS MAP CORRECTLY REPRESENTS A SURVEY MADE BY ME OR UNDER MY DIRECTION IN CONFORMANCE WITH THE LAWS OF THE STATE OF OREGON AT THE REQUEST OF THE U.S. FOREST SERVICE.



U.S. DEPARTMENT OF AGRICULTURE	
REGION 6	ROGUE RIVER NAT. FOREST
SECTION SUBDIVISION SECTION 35	
Township 31 South, Range 3 East, W. M.	
SURVEYED BY: H. CENTER, R. Mitchell	DATE: 7-12-78
REVIEWED BY: [Signature]	DATE: 7/12/78
APPROVED BY: R.J. Hathaway	DATE: 7/12/78

7329

Survey No. 7329

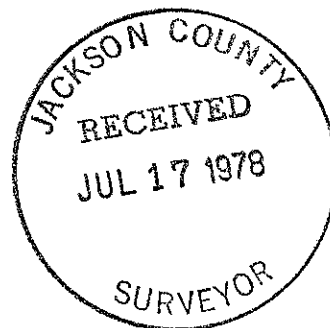
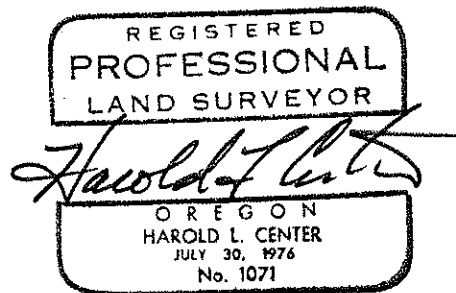
Page 7 of 7

From which the following references:

A fir 10 inches in diameter bears S72° 39'W, 33.90 feet distance, scribed N 1/16 S34 LS1071 BT.

A fir 11 inches in diameter bears S36° 48'E, 9.70 feet distance, scribed N 1/16 S35 LS1071 BT.

HAROLD L. CENTER  
Registered Professional Land Surveyor  
Oregon Certificate No. 1071



Survey No. 7329

Page 6 of 7

At the corner location I found a 1 inch diameter galvanized iron post with 1½ inch bell pipe reducer filled with pot metal marked:

T31S            R3E  
E 1/16     $\frac{S35}{S2}$   
T32S  
1978  
LS1071

I found this monument to be correctly located and accepted the monument as found. I stamped LS1071 and the date on monument and marked reference trees as follows:

A fir 12 inches in diameter bears N20° 11'E, 30.70 feet distance, scribed E 1/16 S35 LS1071 BT.

A fir 11 inches in diameter bears S53° 24'E, 45.40 feet distance, scribed E 1/16 S2 LS1071 BT.

South one-sixteenth corner common to Sections 35 and 36, Township 31 South, Range 3 East, Willamette Meridian.

At the corner position I set a 2½ inch diameter galvanized iron post with 2½ inch diameter brass cap marked:

T31S            R3E  
S 1/16  
35 | 36  
1978  
LS1071

From which the following references:

A fir 10 inches in diameter bears N60° 41'W, 112.59 feet distance, scribed S 1/16 S35 LS1071 BT.

A fir 13 inches in diameter bears N51° 00'E, 27.73 feet distance, scribed S 1/16 S36 LS1071 BT.

North one-sixteenth corner common to Sections 34 and 35, Township 31 South, Range 3 East, Willamette Meridian.

At the corner position I set a 2½ inch diameter galvanized iron post with a 2½ inch diameter brass cap marked:

T31S            R3E  
N 1/16  
35 | 36  
1978  
LS1071

Survey No. 7329

Page 5 of 7

One-quarter corner common to Sections 35 and 36, Township 31 South, Range 3 East, Willamette Meridian.

At the corner location I found a standard BLM monument marked:

U.S. Dept. of Interior  
Cadastral Surveys  
Unlawful to Disturb

T31S            R3E  
          1/4  
          35 | 36  
          1966

From which the following references:

- A fir 8 inches in diameter bears N52° 13'W, 27.58 feet distance.
- A cedar 18 inches in diameter bears S07° 05'E, 4.86 feet distance.
- A cedar 23 inches in diameter bears S66° 40'W, 18.76 feet distance.

One-quarter corner common to Sections 34 and 35, Township 31 South, Range 3 East, Willamette Meridian.

At the corner location I set a 2½ inch diameter galvanized iron post with 2½ inch diameter brass cap marked:

T31S            R3E  
          1/4  
          34 | 35  
          1978  
          LS1071

From which the following references:

- A fir 18 inches in diameter bears N68° 04'E, 9.00 feet distance, scribed 1/4 S34 LS1071 BT.
- A fir stump 54 inches in diameter bears N03° 00'E, 318.80 feet distance, a very old bark blaze found below undercut line, possible scribe found.
- A fir 13 inches in diameter bears N68° 58'E, 47.40 feet distance, scribed 1/4 S35 LS1071 BT.

CORNERS ESTABLISHED THIS SURVEY:

East one-sixteenth corner common to Section 35, Township 31 South, Range 3 East, and Section 2, Township 32 South, Range 3 East, Willamette Meridian.

One-quarter corner common to Sections 35 and 26, Township 31 South, Range 3 East, Willamette Meridian.

At the corner location I found 2½ inch diameter iron post with 2½ inch diameter brass cap marked:

T31S                  R3E  
 1/4  $\frac{S26}{S35}$   
 C.S.  
 1978

From which the following references:

A sawed fir stump 16 inches in diameter with visible scribe marks "BT" bears N59° 09'W, 13.25 feet distance.

A pine 4 inches in diameter bears S33° 06'E, 17.90 feet distance, scribed CS BT.

A pine 6 inches in diameter bears N60° 04'W, 25.84 feet distance, scribed CS BT.

Section corner common to Sections 25, 26, 35 and 36, Township 31 South, Range 3 East, Willamette Meridian.

At the corner location I found a standard BLM monument marked:

U.S. Dept. of Interior  
 Cadastral Surveys  
 Unlawful to Disturb

T31S                  R3E  
 $\frac{S26|S25}{S35|S36}$   
 1966

From which the following references:

A hemlock 18 inches in diameter bears N41° 56'W, 15.20 feet distance, scribe visible.

A fir 14 inches in diameter bears N19° 37'E, 11.20 feet distance, healed scar.

A fir 15 inches in diameter bears S69° 33'E, 26.00 feet distance, healed scar.

A pine snag 80 inches in diameter bears S02° 46'E, 36.50 feet distance, scribe visible.

A fir 20 inches in diameter bears S09° 20'W, 23.00 feet distance, healed scar.

A cedar snag 11 inches in diameter bears S65° 54'W, 16.50 feet distance, scribe visible.

Survey No. 7329

Page 3 of 7

U.S. Dept. of Interior  
Cadastral Surveys  
Unlawful to Disturb

T31S            R3E  
  S34 | S35  
  S3  | S2

T32S  
1962

From which the following references:

A fir 12 inches in diameter bears S83° 47'E, 11.30 feet distance, healed scar.

A madrone 12 inches in diameter bears S64° 56'W, 11.30 feet distance, scribe visible.

A fir 8 inches in diameter bears N15° 53'W, 41.30 feet distance, healed scar.

A fir 8 inches in diameter bears N26° 29'E, 7.20 feet distance, healed scar.

Section corner common to Sections 27, 26, 34 and 35, Township 31 South, Range 3 East, Willamette Meridian.

At the corner location I found a standard BLM monument marked (monument 10 inches below pavement surface):

U.S. Dept. of Interior  
Cadastral Surveys  
Unlawful to Disturb

T31S            R3E  
  S27 | S26  
  S34 | S35

1966

From which the following references:

A fir 15 inches in diameter bears S80° 03'W, 99.82 feet distance, healed scar.

A fir 36 inches in diameter bears N51° 24'W, 106.76 feet distance, scribe visible.

A fir stump 30 inches in diameter bears N21° 04'W, 35.40 feet distance, scribe visible.

**A fir stump 30 inches in diameter bears N21° 04'W, 35.40 feet distance, scribe visible.**

A pine 34 inches in diameter bears N47° 30'E, 57.50 feet distance, scribe visible.

A fir 15 inches in diameter bears S41° 08'E, 77.50 feet distance, healed scar.

At the corner location I found a standard BLM monument marked:

U.S. Dept. of Interior  
Cadastral Surveys  
Unlawful to Disturb

T31S            R3E  
  S35 | S36  
  S2  | S1  
  
T32S  
1962

From which the following references:

A pine 13 inches in diameter bears N06° 56'E, 39.10 feet distance, scribe visible.

A yew 6 inches in diameter bears S31° 50'E, 4.80 feet distance, scribe visible.

A yew 14 inches in diameter bears S35° 44'W, 21.70 feet distance, scribe visible.

A fir 15 inches in diameter bears S65° 51'W, 31.1 feet distance, healed scar.

One-quarter corner common to Section 35, Township 31 South, Range 3 East, and Section 2, Township 32 South, Range 3 East, Willamette Meridian.

At the corner location I found a 1 inch diameter iron post with 1½ inch diameter pipe expander filled with pot metal marked:

T31S            R3E  
  1/4 S35  
          S2  
  
T32S            R3E  
          1968  
LS1071    1978

I found this monument correctly located on line and at the midpoint distance between respective section corners. I found no evidence of the original corner. I accepted this monument and marked LS1071 and dated to monument and marked reference trees as follows:

A fir 6 inches in diameter bears S57° 00'E, 25.00 feet distance, scribed 1/4 S 2 LS1071 BT.

A fir 25 inches in diameter bears N05° 00'W, 27.80 feet distance, scribed 1/4 S35 LS1071 BT.

Section corner common to Sections 34 and 35, Township 31 South, Range 3 East and Sections 2 and 3, Township 32 South, Range 3 East, Willamette Meridian.

At the corner location I found a standard BLM monument marked:

Survey No. 7329

Page 1 of 7

NARRATIVE TO COMPLY WITH  
OREGON REVISED STATUTES PARAGRAPH 209.250

Survey for: Rogue River National Forest  
P. O. Box 520  
Medford, Oregon 97501

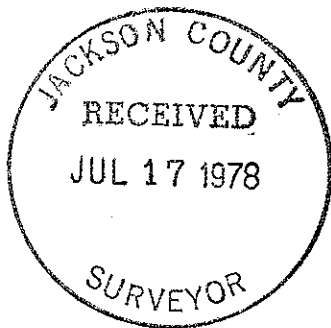
Location: Section 35, Township 31 South, Range 3 East,  
Willamette Meridian, Jackson County,  
Oregon.

Basis of bearing: Solar observation.

Purpose: To establish property corners and mark and post  
National Forest boundary within Section 35.

Procedure: Prior to commencement of this survey an  
Investigation of Corner Control was made. The  
southeast, southwest, northwest, northeast and  
east corners had been remonumented by the Bureau  
of Land Management from original evidence. At  
the position of the south one-quarter corner an  
unrecorded monument believed set by Boise Cascade  
Corporation was recovered. This monument  
believed set by single proportional measurement,  
found to be correctly located and was  
accepted for south one-quarter Section 35.  
The west and north one-quarter corners had  
been previously searched for without  
success. Proportional positions were  
computed for each of these corners with  
evidence of the original corner found for  
both corners. At a position near my  
proportional position at the north one-  
quarter, evidence of the original northwest  
bearing tree was recovered. The corner  
was subsequently remonumented by deputies  
from the Jackson County Surveyor's Office.  
From my proportional position for the west  
one-quarter corner a 50 inch diameter  
stump was recovered to the north. Remains  
of an old axe blaze and possible bark  
scribe were found on the base of this  
stump. Two smaller firs were found to  
the south of this stump with several  
cruiser marks and the letters 42 (felt to  
be date of marks) were also found. In the  
duff, at the base of the stump, an old  
Medco Corporation line tag was also recovered.  
I therefore accepted the stump to be that  
of original bearing tree and set corner at  
record bearing and distance from the fir  
stump.

From the identified corner control I proceeded to  
subdivide and mark lines as shown on the attached  
map.



CORNERS ACCEPTED FOR CONTROL:

Section corner common to Sections 35 and 36, Township 31 South, Range 3  
East, and Sections 1 and 2, Township 32 South, Range 3 East, Willamette  
Meridian.