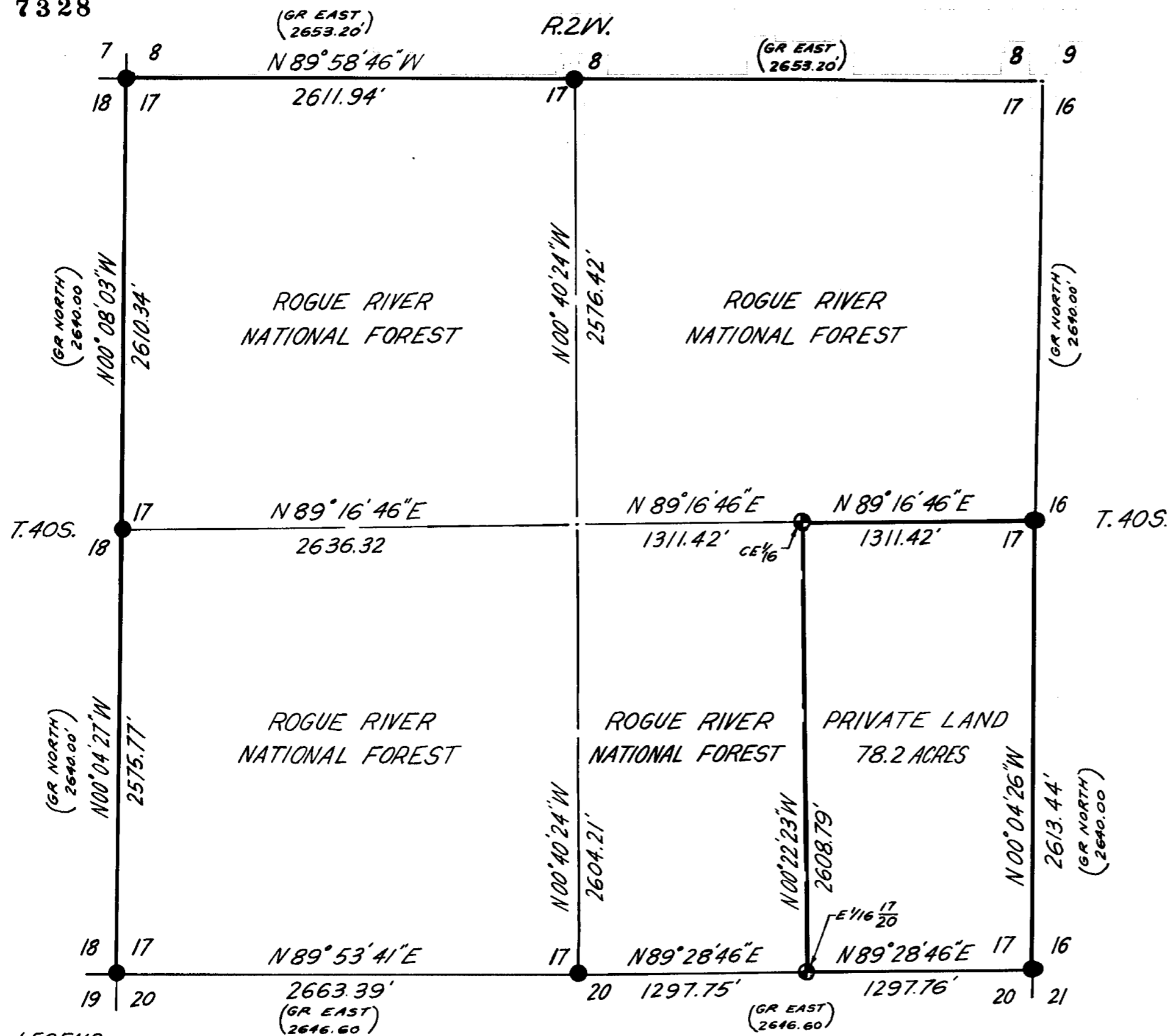
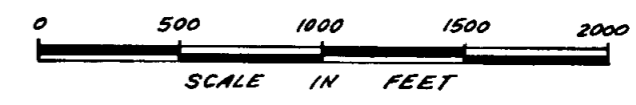


7328



MAP OF SURVEY  
LOCATED IN  
SEC. 17, T.40S., R.2W., W.M.  
JACKSON COUNTY, OREGON  
FOR  
ROGUE RIVER NATIONAL FOREST  
JUNE 22, 1978  
BASIS OF SURVEY - SOLAR OBSERVATION

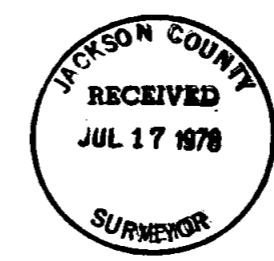


**LEGEND**

- Proportioned Corner position.
- Found Standard BLM or County surveyor monument.
- ⊙ Set 2 1/2" Dia X 30" lg. iron post with 2 1/2" Dia. Brass Cap.
- Section line
- 1/4 Sec. line
- 1/16 Sec. line
- National Forest Boundary

**CERTIFICATE OF SURVEY**

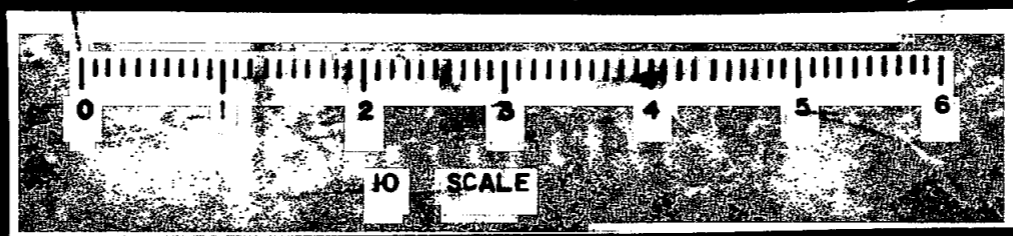
I, HAROLD L. CENTER REGISTRATION NO. 1071 REGISTERED PROFESSIONAL LAND SURVEYOR STATE OF OREGON, HEREBY CERTIFY THAT THIS MAP CORRECTLY REPRESENTS A SURVEY MADE BY ME OR UNDER MY DIRECTION IN CONFORMANCE WITH THE LAWS OF THE STATE OF OREGON AT THE REQUEST OF THE U.S. FOREST SERVICE.



U.S. DEPARTMENT OF AGRICULTURE	
REGION 6	ROGUE RIVER NAT. FOREST
<b>SECTION SUBDIVISION</b>	
SECTION 17	
Township 40 South, Range 2 West, W. M.	
SURVEYED BY: Mike Zehoy	DATE: 7-12-78
REVIEWED BY: [Signature]	DATE: 7/12/78
APPROVED BY: R.J. Hathaway	DATE: 7/12/78

S 7 - 2 W

7328



7328

From which the following references:

A Douglas-fir 7 inches in diameter bears S24° 57'E, 9.10 feet distance, scribed CE 1/16 LS1071 BT on a double blaze.

A Douglas-fir 5 inches in diameter bears S80° 29'W, 4.00 feet distance, scribed CE 1/16 LS1071 BT on a double blaze.

East one-sixteenth corner common to Sections 17 and 20, Township 40 South, Range 2 West, Willamette Meridian.

At the corner position I set a 2½ inch diameter galvanized iron post with a 2½ inch diameter brass cap, marked:

T40S R2W WM  
E 1/16

S17  
|  
S20

1978  
LS 1071

From which the following references:

A Douglas-fir 8 inches in diameter bears S12° 52'E, 57.90 feet distance, scribed S20 E1/16 LS1071 BT on a double blaze.

A Douglas-fir 5 inches in diameter bears N70° 27'E, 38.90 feet distance, scribed S17 E1/16 LS1071 on a double blaze.

HAROLD L. CENTER  
Registered Professional Land Surveyor  
Oregon Certificate No. 1071

REGISTERED  
PROFESSIONAL  
LAND SURVEYOR

*Harold L. Center*  
OREGON  
HAROLD L. CENTER  
JUL 26, 1978  
No. 1071

JACKSON COUNTY  
RECEIVED  
JUL 17 1978  
SURVEYOR

Quarter corner common to Sections 17 and 20, Township 40 South, Range 2 West, Willamette Meridian.

This corner was remonumented by Deputies from the Jackson County Surveyor's Office. In the area of my proportion position the following evidence was recovered.

A fallen tree bears east, 32.00 feet distance, was examined by someone in the past and left chunks of wood with charred scribing on top of the log. Upon digging on the west side at ground level a scribed BT was uncovered. A stone was found south-southeast from the found bearing tree with lightly chiseled 1/4 on the north face. The stone measured 10 inches by 12 inches by 16 inches. From this evidence the Jackson County Surveyor's remonumented the corner based on the location of the stone. Setting a 1 inch iron post with a 2 1/2 inch brass cap marked:

Jackson Co.  
1/4  $\frac{17}{20}$  1978

With the original stone placed on the northwest side of the new monument.

From which the following references:

A pine 20 inches in diameter bears N09° 10'W, 13.70 feet distance. Original bearing tree with chunks of scribed wood found on top and BT on the west side at ground level. Dead and down for many years.

A Douglas-fir 8 inches in diameter bears N60° 03'E, 18.40 feet distance. Scribed CS, BT on a double blaze.

A snag 26 inches in diameter bears S40° 54'E, 7.00 feet distance. Called a bearing tree by the Jackson County Surveyors, but no blazing or scribing found.

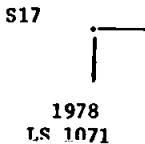
A Douglas-fir 6 inches in diameter bears S60° 56'W, 6.60 feet distance, scribed CS BT on a double blaze.

Corners Established by this Survey

Center east one-sixteenth corner of Section 17, Township 40 South, Range 2 West, Willamette Meridian.

At the corner position I set a 2 1/2 inch diameter galvanized iron post with a 2 1/2 inch diameter brass cap marked:

T.40 S., R.2 W., W.M.  
CE 1/16



Quarter corner common to Sections 8 and 17, Township 40 South, Range 2 West, Willamette Meridian.

At the corner location I found a standard Bureau of Land Management monument marked:

U. S. Dept. of Interior  
Cadastral Survey  
Unlawful to Disturb

T40S R2W WM

1/4  $\frac{S8}{S17}$

1975

From which the following references:

A pine 5 inches in diameter bears S16° 03'W, 56.50 feet distance, with a pitched over blaze, no scribing visible.

A Douglas-fir 10 inches in diameter bears N22° 33'E, 30.10 feet distance, with BT visible on a single blaze.

Quarter corner common to Sections 16 and 17, Township 40 South, Range 2 West, Willamette Meridian.

At the corner location I found a standard Bureau of Land Management monument.

U. S. Dept. of Interior  
Cadastral Survey  
Unlawful to Disturb

T40S R2W WM

1/4

S17 | S16

1975

From which the following references:

A snag 23 inches in diameter bears S16° 11'E, 11.00 feet distance. A piece of wood was found at the base of the snag with 1/4S scribed on it.

A pine 13 inches in diameter bears S61° 52'W, 25.40 feet distance, with BT visible in a single blaze.

A Douglas-fir 18 inches in diameter bears N66° 46'E, 7.10 feet distance with a pitched over blaze.

U. S. Dept. of Interior  
Cadastral Survey  
Unlawful to Disturb

T40S            R2W  
S18 | S17  
S19 | S20

1975

From which the following references:

An oak 9 inches in diameter bears N81° 44'E, 23.90 feet distance, with no blaze mark or scribing visible.

A Douglas-fir 6 inches in diameter bears S23° 09'E, 33.00 feet distance. Double blazed with BT still visible.

A Douglas-fir 10 inches in diameter bears S21° 57'W, 3.60 feet distance, pitched over blaze with no scribing visible.

A dead standing oak 8 inches in diameter bears N67° 15'W, 30.90 feet distance, with a scar which looks into the rotted out heart of the tree.

A pine 12 inches in diameter bears N63° 07'W, 23.1 feet distance, with a pitched over blaze, no scribing visible.

Quarter corner common to Sections 17 and 18, Township 40 South, Range 2 West, Willamette Meridian.

At the corner location I found a standard Bureau of Land Management monument marked:

U. S. Dept. of Interior  
Cadastral Survey  
Unlawful to Disturb

T40S    R2W    WM  
1/4  
S18 | S17

1975

From which the following references:

A Douglas-fir 9 inches in diameter bears S45° 53'E, 29.20 feet distance, with a pitched over blaze, no scribing visible.

A fallen but alive oak 12 inches in diameter bears N66° 26'W, 8.00 feet distance blazed on the bottom of the log.

A cedar 28 inches in diameter bears N10° 41'W, 42.40 feet distance, with scribing on a single blaze of 1/4 S18 BT.

An oak 17 inches in diameter bears N8° 22'E, 20.70 feet distance, with no scar or blaze.

From this data corner positions were calculated. Moving from the random line between the southeast section corner and the south quarter corner to the location of the east one-sixteenth corner of Sections 17 and 20. I commenced to run north on a true line to the location of the center-east one-sixteenth corner then continued the true line east to close on the east quarter corner. This line closed within the required accuracy.

Corners Accepted for Control

Section corner common to Sections 16, 17, 20 and 21, Township 40 South, Range 2 West, Willamette Meridian.

At the corner location I found a standard Bureau of Land Management monument marked:

U. S. Dept. of Interior  
Cadastral Survey  
Unlawful to Disturb

T40S	R2W
S17	S16
S20	S21

1975

From which the following references:

A Douglas-fir 45 inches in diameter bears N44° 16'E, 25.20 feet distance, no visible blaze.

A fir 8 inches in diameter bears N75° 55'E, 31.90 feet distance, scribed T40S, R2W, S16 BT on single blaze.

A Douglas-fir 27 inches in diameter bears S69° 56'E, 19.60 feet distance. No scribing visible within the double blaze.

A Douglas-fir 7 inches in diameter bears S34° 56'E, 9.60 feet distance, illegible scribing in a single blaze.

A Douglas-fir 7 inches in diameter bears S80° 56'W, 14.00 feet distance, scribed T40S, R2W, S20 BT on a single blaze.

A fir 12 inches in diameter bears N04° 46'W, 20.20 feet distance, scribed T40S, R2W, S17 BT on a single blaze.

Section corner common to Sections 17, 18, 19 and 20, Township 40 South, Range 2 West, Willamette Meridian.

At the corner location I found a standard Bureau of Land Management monument marked:

SURVEY NARRATIVE TO COMPLY WITH  
OREGON REVISED STATUTE PARAGRAPH 209.250

Survey for: Rogue River National Forest  
P. O. Box 520  
Medford, Oregon 97501

Location: Section 17, Township 40 South, Range  
2 West, Willamette Meridian, Jackson  
County, Oregon.

Basis of Bearing: Solar observation.

Purpose: To establish property corners and mark  
and post National Forest ownership with-  
in Section 17.

Procedure: Prior to commencement of this survey an  
investigation of corner control was made. The  
Bureau of Land Management had remonumented from  
original evidence, all controlling corners  
except the one-quarter corner common to Sections  
17 and 20, which was recovered during this  
survey and remonumented by the Jackson County  
Surveyor.

With the above corner control identified I began a random line traverse at the southeast section corner and traversed west to the southwest section corner. From this information a single proportion location of the south quarter corner was computed. At a point near my proportion position, evidence of the original corner was recovered. Deputies from the Jackson County Surveyors investigated and evaluated found evidence and remonumented the south quarter corner.

From a random line point near the south quarter I traversed to the section line between Sections 17 and 18 halfway between the west one-quarter and northwest section corner. I then traversed to the northwest section corner turning east to the north quarter corner. I then traversed cross canyon back to the random line between the southeast and southwest section corners, closing this traverse within the required accuracy.

From the southeast section corner I ran a random traverse to the east quarter corner west to the west quarter corner then north to close in to the line going into the northwest section corner. This line closed within the required accuracy.

