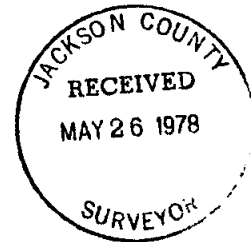


7273

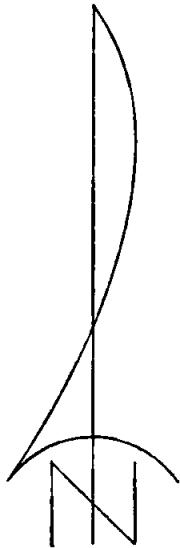
SURVEY FOR: WHITE CITY CORPORATION

LOCATED IN THE N.W. 1/4 OF SECTION 19, T.36S., R.1W., W.M.

BY: MARK E. BOYDEN  
MAY 26, 1978



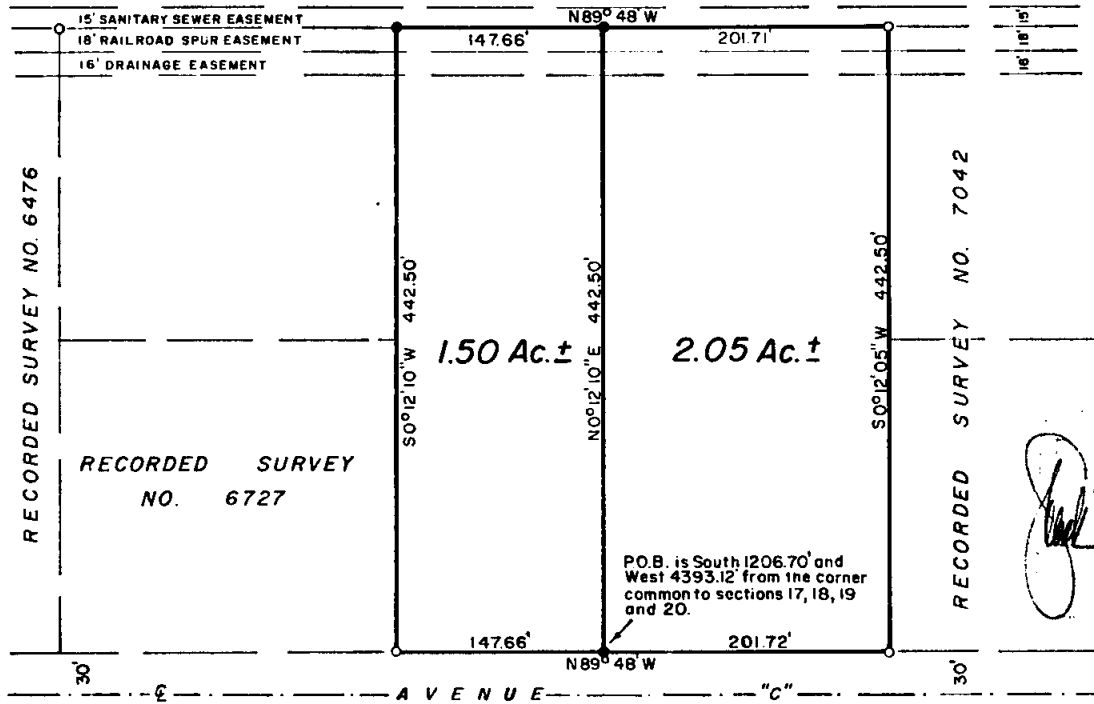
(P.L. 100)  
NW 1/4 519 36 1W



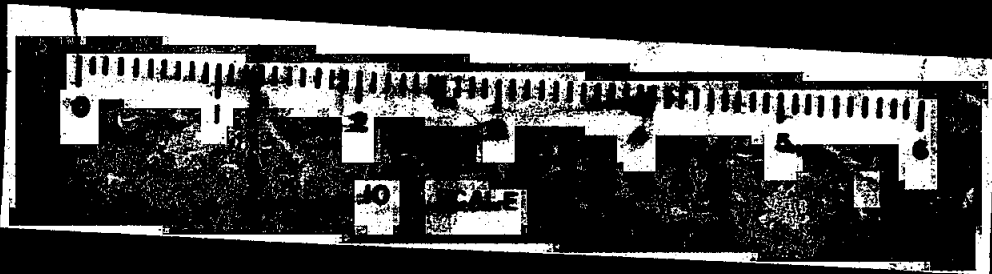
SCALE: 1" = 100'

BASIS OF BEARINGS:  
RECORDED SURVEY NO. 6311

- o Found 3/4" re-bar
- Set 3/4" X 24" re-bar



7273



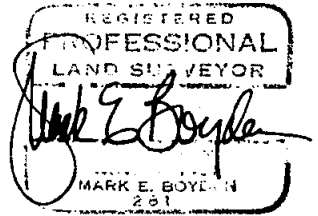
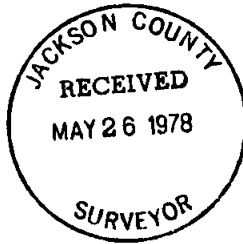
**SURVEY NARRATIVE TO COMPLY WITH O.R.S. 209.250**

**FOR:** White City Corporation  
White City, Oregon

**PURPOSE:** To monument and describe two tracts fronting Avenue 'C', being located in the NW 1/4 of Section 19, T36SR1W, W.M.

**PROCEDURE:** From controls previously utilized on Recorded Survey Nos. 6311, 6476, 6727 and 7042, monumented the additional corners at positions shown on the annexed map.

May 26, 1978



7  
(T.L. 100)  
NW 1/4 S19 36 1W