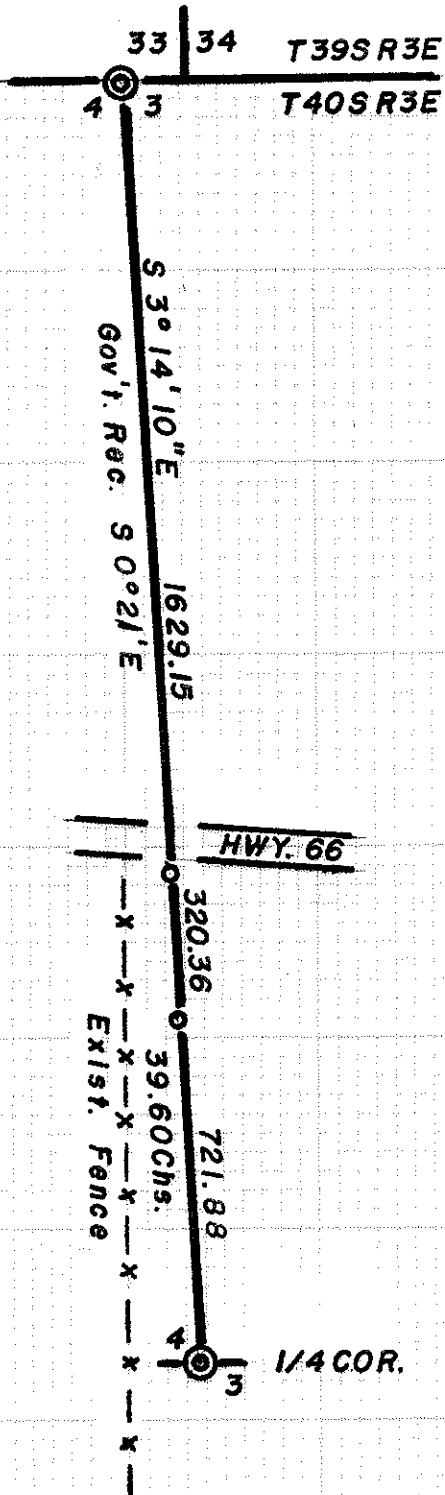


7261

7261



SCALE 1"=400'

Basis of Bearings  
Solar Observation

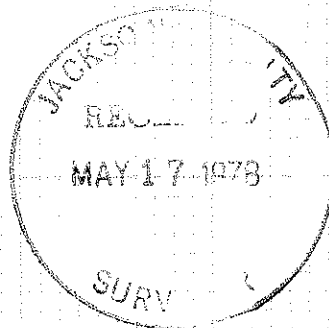
LEGEND

- ⊙ = Fd. C.S. br. capped 1" pipe
- = Set 5/8" I. Pin wit. cor.

REGISTERED  
PROFESSIONAL  
LAND SURVEYOR

*George Burrell*

OREGON  
JULY 10, 1964  
GEORGE R. BURRELL  
638



MAP OF SURVEY

Located in Sec. 3T40SR3E  
For: RONALD McHUGH  
By: Geo. Burrell, Surveyor

May 1978

7261

7261

SURVEY NO. \_\_\_\_\_

SURVEY NARRATIVE TO COMPLY WITH O.R.S. 209.250

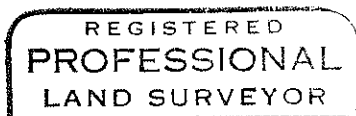
FOR: Ronald Mc Hugh  
1940 Soda Mtn. Rd.  
Ashland, Oregon

PURPOSE: To establish the West line of section 3 as shown on the  
accompanying map.

PROCEEDURE: A random traverse was run from the Northwest corner of  
section 3 to the 1/4 section corner to sections 3 and 4,  
from which the true line was established and monumented  
as shown.

It would appear that the orig. Gov't. survey by Thompson  
may have closed on the wrong Township corner.

It might be noted that a North-South fence bears approx.  
150 feet West of the 1/4 corner to sections 3 and 4 and  
a 1" dia. Steel axle bears approx N.W. 90 feet from said  
corner.



*George R. Burrell*

