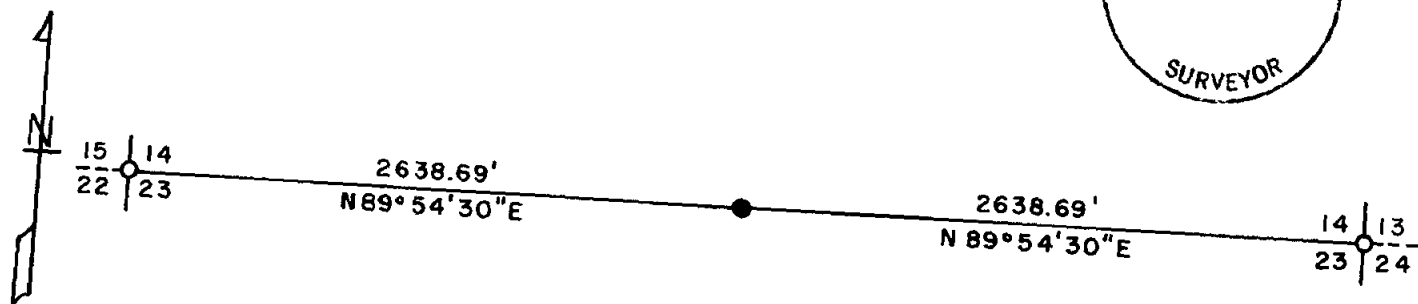
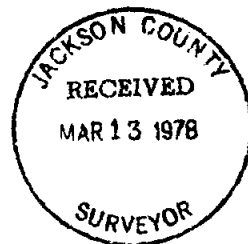
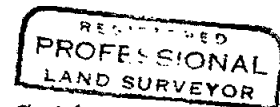


7140

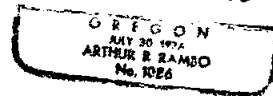
Sec. 14, Twp. 35 S, Range 1 E
Willamette Meridian
South Line



○ FOUND 2 1/2" BRASS COUNTY MONUMENT
● SET 5/8" BY 30" REBAR WITH 1 1/2" ALUM. CAP
SCALE: 1" = 600'
DATE: MARCH 3, 1978



Arthur R. Rambo



7140

54 35

March 3, 1978

Survey For: Medford Resources Corporation
P. O. Box 550
Medford, Oregon 97501

Location: Section 14, Township 35 South, Range 1 East, Willamette Meridian,
Jackson County, Oregon

- Purpose:
1. To monument and reference the quarter corner common to Section 14 and Section 23, T35S, R1E, W.M.
 2. To blaze and tag the West half of the South Line Section 14 T35S, R1E, W.M.

Procedure: Ran a transit and chain closed traverse survey along the South line of Section 14 T35S, R1E, W.M. Bearings are from solar observations near the South East Corner.

A search in the field revealed the South East and South West Corners had been monumented by the county surveyor from original evidence. No evidence of the South quarter Corner could be found. (Two man-days were spent searching.) The quarter corner position being established by proportionate measurement on this survey.

At the quarter corner common to Section 14 and Section 23 T35S, R1E:

Set a 5/8" x 30" rebar with a 1 1/2" alum. cap stamped

LS1086
S14
1/4 +
S23
T35SR1E

from which:

Scribed a 13" White Oak "1/4S14LS1086 BT" which bears N 47° 12' W 107.3 feet to the center of tree at lower blaze.

Scribed a 12" Yellow Pine "1/4S23LS1086 BT" which bears S 7° 24' W 104.45 feet to the center of tree at the lower blaze.

A North-South fence bears West 105.0 feet.

