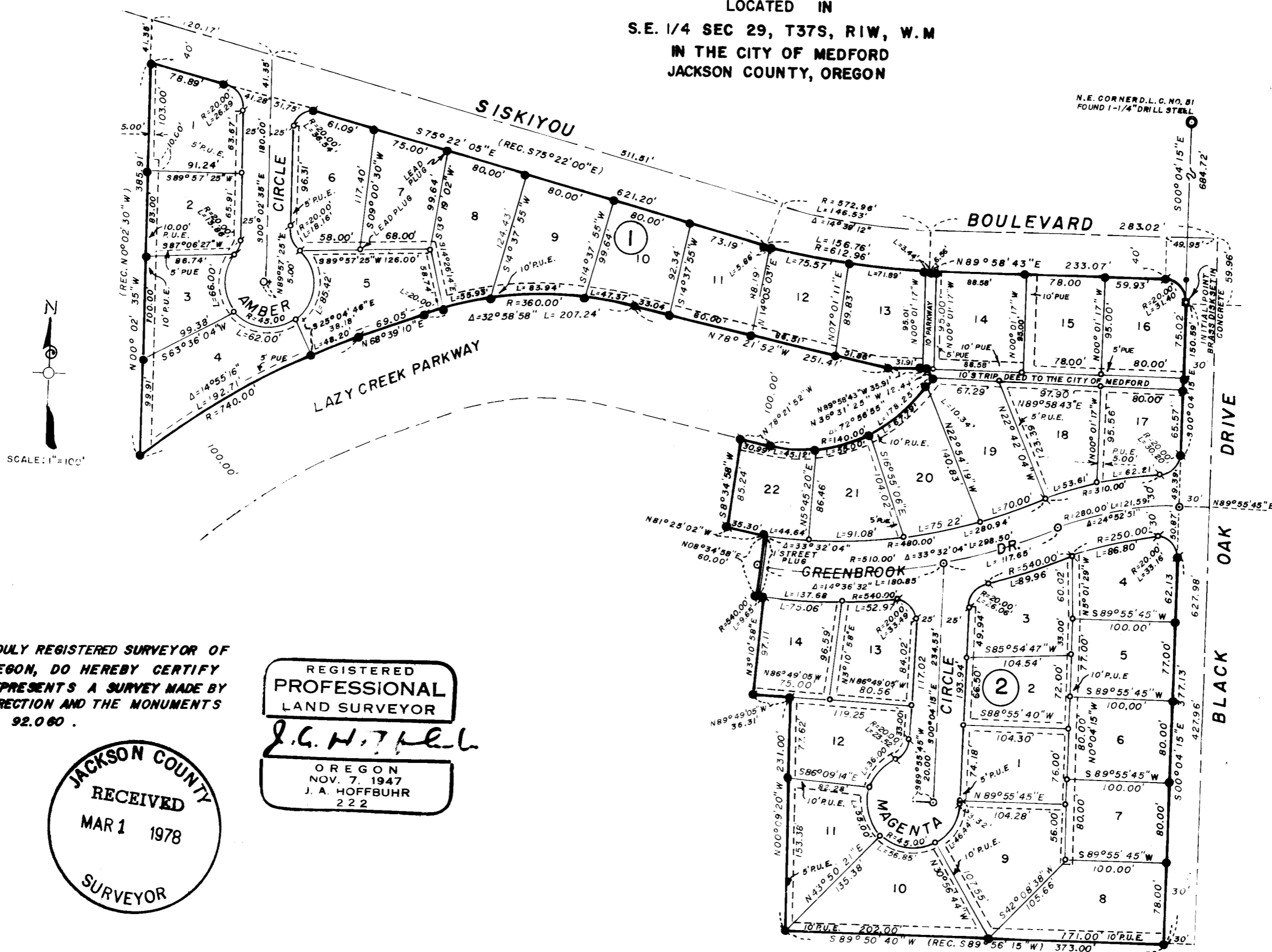


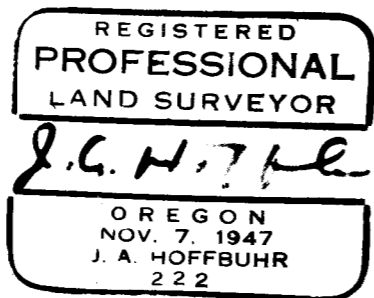
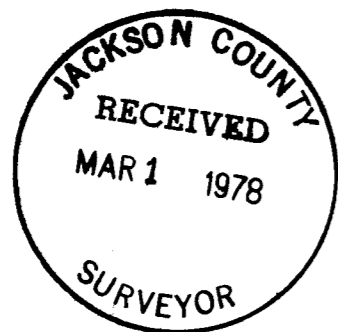
GREENBROOK

SUBDIVISION

LOCATED IN
S.E. 1/4 SEC 29, T37S, R1W, W.M
IN THE CITY OF MEDFORD
JACKSON COUNTY, OREGON



I, J.A. HOFFBUHR, DULY REGISTERED SURVEYOR OF THE STATE OF OREGON, DO HEREBY CERTIFY THAT THIS MAP REPRESENTS A SURVEY MADE BY ME OR UNDER MY DIRECTION AND THE MONUMENTS CONFORM TO O.R.S. 92.060.



POST MONUMENTATION MAP
SEPTEMBER 9, 1977

- = MONUMENTS FOUND PER ORIGINAL SUBDIVISION PLAT
- = SET 5/8" x 24 IRON PIN
- ⊙ = SET 5/8" x 30" IRON PIN
- ⊗ = SET BRASS DISC IN MONUMENT CASE

FILED FOR RECORD THIS 1 DAY OF March 19 78 AT 2:02 O'CLOCK P.M. AND RECORDED IN THE OFFICIAL RECORDS OF JACKSON COUNTY, OREGON.

Harry Chipman COUNTY CLERK
Martha Baker DEPUTY