

# GREEN GLEN SUBDIVISION

LOCATED IN  
N.W. 1/4, SECTION 10, TOWNSHIP 37 SOUTH, RANGE 2 WEST, WILLAMETTE MERIDIAN  
CITY OF CENTRAL POINT, JACKSON COUNTY, OREGON  
— UNIT NO. 1 —

## DEDICATION

KNOW ALL MEN BY THESE PRESENTS, THAT WE, MULTI-STATE BUILDERS, INCORPORATED, ARE THE OWNERS AND SUBDIVIDERS OF THE LAND HEREON DESCRIBED, AND THAT WE HAVE SUBDIVIDED THE SAME INTO LOTS AS SHOWN HEREON, AND THE NUMBER AND SIZE OF THE LOTS AND LENGTHS OF ALL LINES ARE PLAINLY SET FORTH, AND THAT THIS PLAT IS A CORRECT REPRESENTATION OF THE SAID SUBDIVISION, AND WE DO HEREBY DEDICATE TO THE PUBLIC AND SOUTHERN OREGON CABLE TELEVISION COMPANY FOR PUBLIC USE, UTILITY EASEMENTS AND STREETS RIGHTS-OF-WAYS SHOWN HEREON, AND WE DO HEREBY GRANT TO THE CITY OF CENTRAL POINT IN FEE SIMPLE THOSE AREAS PORTRAYED AND DESIGNATED AS STREET PLUGS, AND WE DO HEREBY DESIGNATE SAID SUBDIVISION AS GREEN GLEN SUBDIVISION UNIT NO. 1.

IN WITNESS WHEREOF, WE HAVE SET OUR HANDS AND SEALS THIS 5TH DAY OF OCTOBER, 1977.

*Ronald G. Young*  
RONALD G. YOUNG  
PRESIDENT-TREASURER

*Michelle Young*  
MICHELLE YOUNG  
VICE PRESIDENT-SECRETARY

MULTI-STATE BUILDERS, INCORPORATED  
2735 HERITAGE ROAD, CENTRAL POINT, OREGON

STATE OF OREGON)  
COUNTY OF JACKSON)

ON THIS 5th DAY OF October, 1977, BEFORE ME APPEARED RONALD G. YOUNG, AND MICHELLE YOUNG, BOTH PERSONALLY KNOWN, WHO BEING DULY SWORN, DID SAY THAT HE, THE SAID RONALD G. YOUNG IS THE PRESIDENT, AND SHE, THE SAID MICHELLE YOUNG IS THE SECRETARY OF MULTI-STATE BUILDERS, INCORPORATED, THE WITHIN NAMED CORPORATION, AND THAT THE SEAL AFFIXED TO SAID INSTRUMENT IS THE CORPORATE SEAL OF SAID CORPORATION, AND THAT SAID INSTRUMENT WAS SIGNED AND SEALED IN BEHALF OF SAID CORPORATION BY AUTHORITY OF DIRECTORS, AND RONALD G. YOUNG AND MICHELLE YOUNG ACKNOWLEDGE SAID INSTRUMENT TO BE THE FREE ACT AND DEED OF SAID CORPORATION.

IN TESTIMONY WHEREOF, I HAVE HEREUNTO SET MY HAND AND AFFIXED MY OFFICIAL SEAL THE DAY AND YEAR LAST ABOVE WRITTEN.

*Nancy Myrick*  
NOTARY PUBLIC FOR OREGON  
MY COMMISSION EXPIRES 8-22-81

EXAMINED AND APPROVED BY THE CITY OF CENTRAL POINT PLANNING COMMISSION IN REGULAR SESSION THIS 23 DAY OF DECEMBER, 1977.

ATTEST: *Donald C. Banks* CHAIRMAN *Jean Hillier* SECRETARY

EXAMINED AND APPROVED THIS 23 DAY OF December, 1977.

EXAMINED AND APPROVED BY THE CITY OF CENTRAL POINT CITY COUNCIL IN REGULAR SESSION THIS 23 DAY OF DECEMBER, 1977.

*Jack W. Snook* Mayor *Betty Anders* City Recorder

EXAMINED AND APPROVED BY ROGUE RIVER VALLEY IRRIGATION DISTRICT IN REGULAR SESSION THIS 5th DAY OF OCTOBER, 1977.

*Otto Bohner* Chairman *A. J. Penallton* Manager

EXAMINED AND APPROVED THIS 18 DAY OF JANUARY, 1978.  
*Richard O. Miller* MANAGER  
*Pauline E. McCormack* DEPUTY  
BEAR CREEK VALLEY SANITARY AUTHORITY  
I HEREBY CERTIFY THAT ALL AD VALOREM TAXES AND ALL SPECIAL ASSESSMENTS, FEES AND OTHER CHARGES REQUIRED BY LAW WHICH WILL BECOME A LIEN DURING THE 1978 CALENDAR YEAR HAVE BEEN PAID.

FOR ORDER OF THE BOARD OF COUNTY COMMISSIONERS APPROVING THIS PLAT SEE VOLUME \_\_\_\_\_, PAGE \_\_\_\_\_ OF THE COUNTY COMMISSIONER'S JOURNAL OF PROCEEDINGS BY *Pauline E. McCormack* DEPUTY COUNTY CLERK

FILED FOR RECORD THIS 17 DAY OF February, 1978 AT 3:27 O'CLOCK P.M. AND RECORDED IN 13 VOLUME OF PLATS AT PAGE 28 OF RECORDS OF JACKSON COUNTY, OREGON.

BY *Pauline E. McCormack* DEPUTY COUNTY CLERK  
*Harry Chipman* COUNTY CLERK

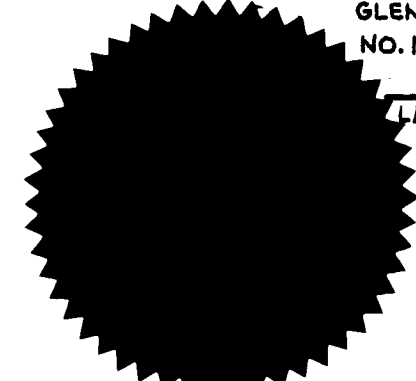
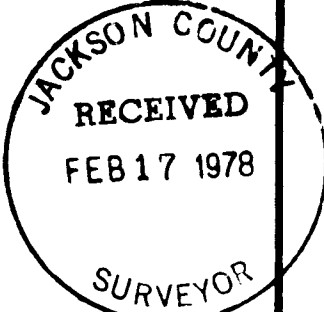
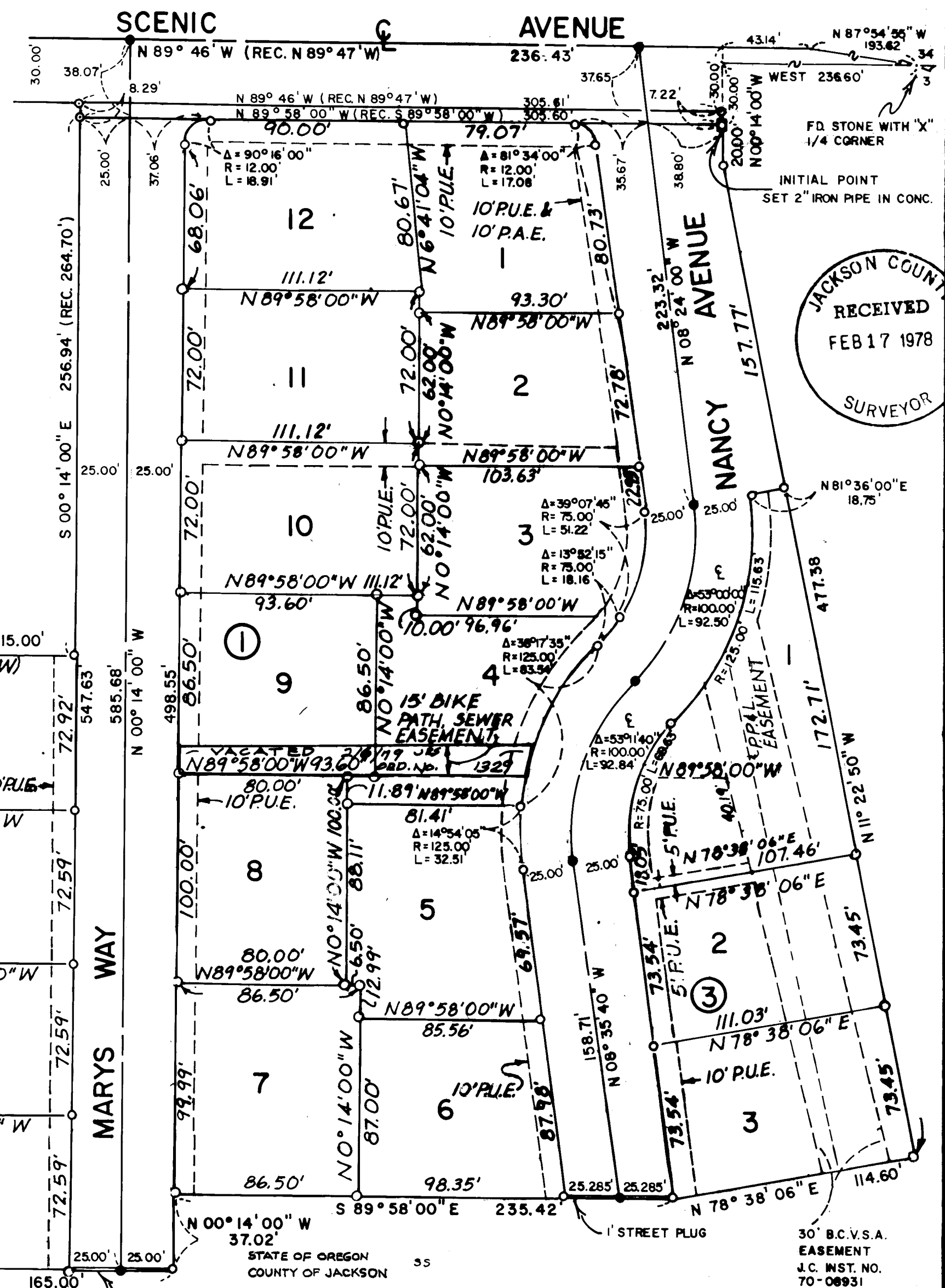
## SURVEYOR'S CERTIFICATE

STATE OF OREGON)  
COUNTY OF JACKSON)

I, RONALD G. YOUNG, REGISTERED PROFESSIONAL ENGINEER AND LICENSED SURVEYOR IN THE STATE OF OREGON, BEING FIRST DULY SWORN, DO HEREBY CERTIFY THAT I HAVE CORRECTLY SURVEYED AND MARKED WITH PROPER MONUMENTS AS PROVIDED BY LAW THE TRACT OF LAND HEREON SHOWN AND THAT THIS PLAT IS A CORRECT REPRESENTATION OF THE SAME, AND THE FOLLOWING IS AN ACCURATE DESCRIPTION OF THE BOUNDARY LINE: COMMENCING AT THE NORTHEAST CORNER OF THE NORTHWEST 1/4 OF SECTION 3, TOWNSHIP 37 SOUTH, RANGE 2 WEST, WILLAMETTE MERIDIAN, JACKSON COUNTY, OREGON, THENCE PROCEEDING WEST 236.60 FEET, SOUTH 0°14'00" EAST 30.00 FEET TO THE POINT OF BEGINNING WHICH IS THE INITIAL POINT OF THE SUBDIVISION AND IS ON THE SOUTH LINE OF SCENIC AVENUE, THENCE NORTH 89°58'00" WEST (RECORD S89°58'00"W) 305.60 FEET, THENCE SOUTH 0°14'00" EAST 256.94 FEET (RECORD 264.70') THENCE SOUTH 89°52'00" WEST (RECORD N89°52'00"W) 115.00 FEET, THENCE SOUTH 89°58'00" EAST 165.00 FEET, THENCE NORTH 0°14'00" WEST 37.02 FEET, THENCE SOUTH 89°58'00" EAST 235.42 FEET, THENCE NORTH 78°38'06" EAST 114.60 FEET, THENCE NORTH 11°22'50" WEST 477.38 FEET, THENCE NORTH 0°14'00" WEST 20.00 FEET TO THE TRUE POINT OF BEGINNING WHICH IS THE INITIAL POINT OF SUBDIVISION.

*Ronald G. Young* REGISTERED PROFESSIONAL ENGINEER - SURVEYOR  
*Ronald G. Young* REGISTERED PROFESSIONAL LAND SURVEYOR

SUBSCRIBED AND SWORN BEFORE ME THIS 20th DAY OF December, 1977. MY COMMISSION EXPIRES THE 22 DAY OF August, 1981.  
*Nancy Myrick* NOTARY PUBLIC FOR OREGON



SUBSCRIBED AND SWORN BEFORE ME THIS 9th DAY OF FEBRUARY, 1978. MY COMMISSION EXPIRES THE 22 DAY OF August, 1981.  
*Nancy Myrick* NOTARY PUBLIC FOR OREGON

- ### LEGEND
- P.A.E. = PUBLIC ACCESS EASEMENT (BLK. 1, LOTS 1, 2, 3, 4)
  - P.U.E. = PUBLIC UTILITY EASEMENT
  - NO. 1. = FOUND 5/8" IRON PIN
  - = SET 5/8" x 30" IRON PIN
  - = SET BRASS DISC IN CONCRETE
  - SCALE: 1" = 50'
  - OCTOBER 5, 1977
  - BASIS OF BEARING: SCENIC VILLAGE SUBDIVISION