

7101



MAP OF SURVEY
LOCATED IN
SEC. 20 T. 32 S., R. 3 E., W. M.
JACKSON CO. OREGON
FOR
ROGUE RIVER NAT. FOREST
JANUARY 31, 1978

BASIS OF BEARING - SOLAR OBSERVATION
SCALE 1" = 600'
● FOUND BLM OR COUNTY SURVEYOR
MONUMENT
◆ FOUND R.L.S. N^o 759 MONUMENT
⊕ SET 2 1/2" DIA. X 30" LG. IRON POST
WITH 2 1/2" DIA. BRASS CAP

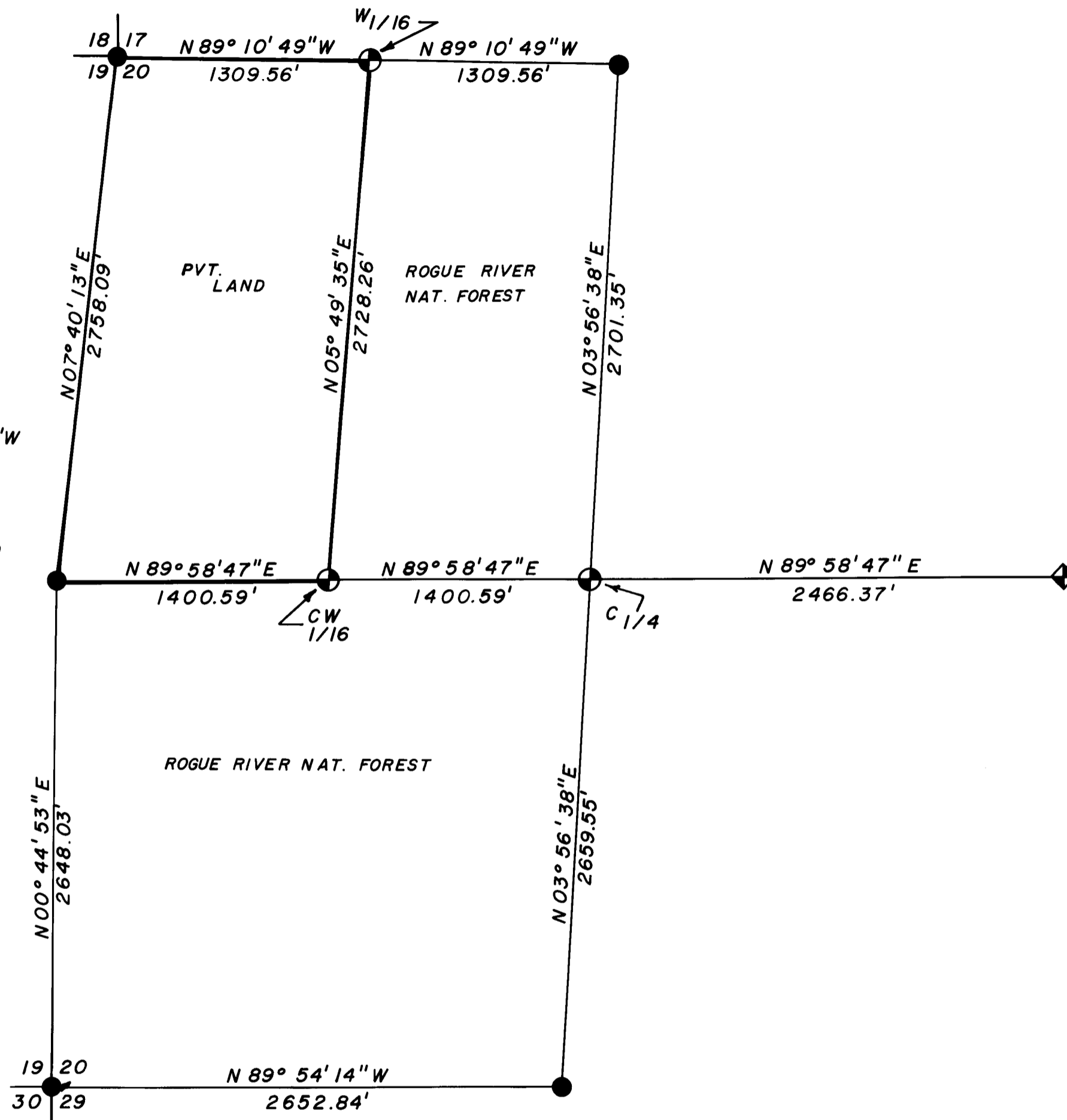
NOTE

BLM MONUMENTS FOUND AND NOT USED FOR CONTROL IN THIS SURVEY SITUATED AS FOLLOWS:

BLM W1/16 BEARS S04°10'50"W 100.57' FROM L.S. 1071 W1/16

BLM COR. COMMON TO 17, 18, 19, 20 BEARS S07°41'00"W 101.61' FROM ORIGINAL CORNER REMONUMENTED BY COUNTY SURVEYOR

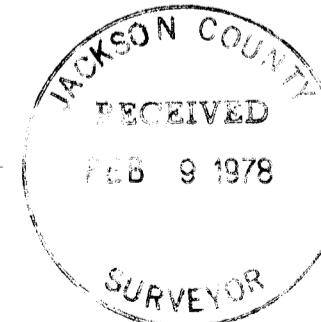
BLM 1/4 CORNER COMMON TO 19 & 20 BEARS S87°14'59"E 157.88' FROM CORNER MONUMENTED BY COUNTY SURVEYOR



CERTIFICATE OF SURVEY

I, HAROLD L. CENTER REGISTRATION N^o 1071 REGISTERED PROFESSIONAL LAND SURVEYOR STATE OF OREGON, HEREBY CERTIFY THAT THIS MAP CORRECTLY REPRESENTS A SURVEY MADE BY ME OR UNDER MY DIRECTION IN CONFORMANCE WITH THE LAWS OF THE STATE OF OREGON, AT THE REQUEST OF THE U.S. FOREST SERVICE.

REGISTERED
PROFESSIONAL
LAND SURVEYOR
Harold L. Center
OREGON
JULY 30, 1976
HAROLD L. CENTER
No. 1071



U. S. DEPARTMENT OF AGRICULTURE	
FOREST SERVICE	
REGION 6	ROGUE RIVER NAT. FOREST
DEPENDENT RESURVEY AND SECTION SUBDIVISION	
T. 32 S., R. 3 E., SEC. 20, W. M.	
SURVEYED BY <u>NEWCOMB - MITCHELL</u>	DATE <u>1-78</u>
REVIEWED BY <u>Donald J. McDonald</u>	DATE <u>2/2/78</u>
APPROVED BY <u>R. J. Hathaway</u>	DATE <u>2-3-78</u>

At the corner position I set a 2 1/2 inch diameter galvanized iron post with 2 1/2 inch diameter brass cap marked:

T32S R3E
 C 1/4 S20
 1978
 LS 1071

From which the following references:

A fir 13 inches in diameter bears N03° 54'E 41.50 feet distance, scribed C 1/4 S20 LS1071 BT.

A fir 17 inches in diameter bears N89° 27'E 20.90 feet distance, scribed C 1/4 S20 LS1071 BT.

Center west one-sixteenth corner Section 20, Township 32 South, Range 3 East, Willamette Meridian.

At the corner position I set a 2 1/2 inch diameter galvanized iron post with 2 1/2 inch diameter brass cap marked:

T32S R3E
 CW 1/16 S20
 1978
 LS 1071

From which the following references:

A fir 10 inches in diameter bears S27° 58'E 14.10 feet distance, scribed CW 1/16 S20 LS1071 BT.

A fir 9 inches in diameter bears S82° 22'W 6.45 feet distance, scribed CW 1/16 S20 LS1071 BT.

Special Note:

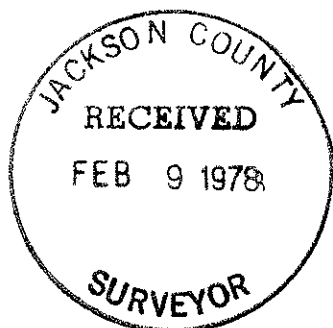
As original evidence was recovered for the west one-quarter corner Section 20 and the section corner common to 17, 18, 19 and 20 the position of the BLM's west one-sixteenth, northwest section and west one-quarter corners were not used for controlling corners in this survey. A letter of information describing discrepancies discovered in this survey will be forwarded to the Branch Chief, Oregon State Office, Bureau of Land Management, requesting an investigation and correction of corners established during the 1962 resurvey within Township 32 South, Range 3 East, Willamette Meridian.

HAROLD L. CENTER
 Registered Professional Land Surveyor
 Oregon Certificate No. 1071

REGISTERED
 PROFESSIONAL
 LAND SURVEYOR

Harold L. Center

OREGON
 HAROLD L. CENTER
 JULY 30, 1975
 No. 1071



At the corner location I found a 2 1/2 inch diameter galvanized iron post with 2 1/2 inch diameter brass cap marked:

T32S R3E
 1/4
 S19 | S20
 C.S.
 1978

From which the following references:

A fir 16 inches in diameter bears N11° 27'W 36.88 feet distance, scribed CS BT.

A fir 12 inches in diameter bears N74° 40'E 10.32 feet distance, scribed CS BT.

A fir stump approximately 20 inches in diameter bears N50° 14'E 2.64 feet distance. This tree believed to be original. Under an 18 inch withthrown fir found remains of an axed face and partial overgrowth of the axed face. No scribe was recovered.

A stump hole depression with rotted remains of fir wood. No estimate of diameter. Bears S44° 53'W 8.58 feet distance. This depression believed to be that of original.

Corners established this survey:

West one-sixteenth corner common to Sections 17 and 20, Township 32 South, Range 3 East, Willamette Meridian.

At the corner position I set a 2 1/2 inch diameter galvanized iron post with 2 1/2 inch diameter brass cap marked:

T32S R3E
 W 1/16
 S17
 S20
 1978
 LS 1071

From which the following references:

A fir 14 inches in diameter bears N28° 52'W 5.60 feet distance, scribed W 1/16 S17 LS1071 BT.

A pine 9 inches in diameter bears S01° 05'E 8.00 feet distance, scribed W 1/6 S20 LS1071 BT.

Center one-quarter corner Section 20, Township 32 South, Range 3 East, Willamette Meridian.

From which the following references:

A fir 10 inches in diameter bears $S78^{\circ} 24'W$, 86.84 feet distance, scribed CS BT.

A fir 12 inches in diameter bears $N15^{\circ} 03'W$, 29.90 feet distance, scribed CS BT.

A hemlock 8 inches in diameter bears $N67^{\circ} 21'E$, 26.08 feet distance, scribed CS BT.

A hemlock 13 inches in diameter bears $S65^{\circ} 17'E$, 38.35 feet distance, scribed CS Bt.

Section corner common to Sections 19, 20, 29 and 30, Township 32 South, Range 3 East, Willamette Meridian.

At the corner location I found a standard BLM monument marked:

U.S. Dept. of Interior
Cadastral Survey
Unlawful to Disturb

T32S R3E

S19	S20
S30	S29

1962

From which the following references:

A pine 10 inches in diameter bears $N37^{\circ} 38'E$ 10.30 feet distance. This tree is now dead.

A fir 15 inches in diameter bears $N79^{\circ} 27'E$ 20.50 feet distance. (This tree marked by County Surveyor.)

A fir 7 inches in diameter bears $S40^{\circ} 33'E$ 25.00 feet distance. (This tree marked by County Surveyor.)

A hemlock 10 inches in diameter bears $S30^{\circ} 08'E$ 43.90 feet distance.

A fir 13 inches in diameter bears $S13^{\circ} 09'W$ 63.80 feet distance.

A fir 10 inches in diameter bears $S29^{\circ} 47'W$ 39.40 feet distance.

A hemlock 18 inches in diameter bears $S34^{\circ} 11'W$ 30.50 feet distance. (This tree marked by County Surveyor.)

A tree of undetermined species and size bears $N87^{\circ} 30'W$ 61.38 feet distance. This tree is dead and down.

A hemlock 11 inches in diameter bears $N31^{\circ} 09'W$ 69.90 feet distance. (This tree marked by County Surveyor.)

One-quarter corner common to Sections 19 and 20, Township 32 South, Range 3 East, Willamette Meridian.

7101

Survey No. _____

Page 4 of 7

A fir 13 inches in diameter bears N26° 00'W, 71.60 feet distance, healed scar.

One-quarter corner common to Sections 20 and 21, Township 32 South, Range 3 East, Willamette Meridian.

At the corner location I found a 2 1/2 inch diameter brass disk set in rock marked:

Swain Surveying

T32S R3E

1/4

S20 S21

PLS 759

Survey Monument 1974

From which the following references:

A pine stump 23 inches in diameter bears N45° 50'W, 18170 feet distance, scribe visible.

A fir 16 inches in diameter bears N68° 58'E, 36.90 feet distance, scribe visible.

A pine stump, no estimate of size, bears S24° 14'E, 46.60 feet distance.

A cedar 5 inches in diameter bears S26° 27'W, 27.10 feet distance, scribe visible.

Section corner common to Sections 17, 18, 19 and 20, Township 32 South, Range 3 East, Willamette Meridian.

At the corner location I found the following evidence of the original corner:

Evidence of the southwest bearing tree consisting of axed face and reverse scribe "19". I also was able to identify the position of the northwest and southeast trees from existing stump and root holes. Under logging slash a stone mound and squared wooden post was recovered which fit record to identified witness trees. The stone mound is not believed to be original and is thought to have been established by Forest Service Blister Rust Control Crews circa 1935-40. The northwest tree, a hemlock, would have fallen under logging slash and was not searched for. This evidence was evaluated by Jackson County Surveyor deputies and was re-monumented as follows:

At the corner location I found a 2 1/2 inch diameter galvanized iron post with a 2 1/2 inch diameter brass cap marked:

T32S R3E

S18	S17
S19	S20

C.S.
1978

Corners Accepted for Control:

One-quarter corner common to Sections 20 and 29, Township 32 South, Range 3 East, Willamette Meridian.

At the corner location I found a standard Bureau of Land Management monument, with a one-inch inside diameter galvanized iron pipe along side. The BLM monument marked:

U.S. Dept. of Interior
Cadastral Survey
Unlawful to Disburb

T32S R3E

1/4 $\frac{S20}{S29}$

1962

From which the following references:

A pine stump 38 inches in diameter bears S17° 31'E, 13.70 feet distance, scribe visible.

A fir 11 inches in diameter bears S09° 10'W, 16.50 feet distance, healed scar.

A fir 10 inches in diameter bears N45° 50'W, 16.70 feet distance, healed scar.

A fir 10 inches in diameter bears S86° 00'W, 2.90 feet distance, healed scar. Note: This tree marked by C. Z. Boyden, October 31, 1951, and not made a part of the BLM remonumentation of this corner.

One-quarter corner common to Sections 17 and 20, Township 32 South, Range 3 East, Willamette Meridian.

At the corner location I found a standard Bureau of Land Management monument marked:

U.S. Dept. of Interior
Cadastral Survey
Unlawful to Disturb

T32S R3E

1/4 $\frac{S17}{S20}$

1962

From which the following references:

A fir 37 inches in diameter bears S36° 54'W, 10.40 feet distance, healed scar.

A fir 14 inches in diameter bears S60° 03'W, 29.70 feet distance, healed scar.

From this data corner positions were calculated. The west one-sixteenth corner, as established by the BLM, was found to be some 50 feet south of the line between the north quarter and the northwest section corners Section 20 established by the BLM.

Questions arose as to the BLM position of both the west one-quarter and the northwest section corner. The position of the west one-quarter corner failed to agree with the original calls given for the Rogue River. The northwest section corner failed to agree with calls for the Rogue River and Graham Creek, a small intermittent creek situated south and west of the northwest corner of Section 20. A subsequent search for this corner recovered original evidence of the northwest corner of Section 20.

A search for the west one-quarter corner recovered evidence believed to be that of the original corner. At a position N87° 15' 07" 157.88 feet distance from the BLM proportioned corner U. S. Forest Service location tags were recovered. One tag was found on a downed 24 inch diameter fir tree with the initials LA and the date 1951. (This tag believed set by L. Anderson, former Forest Service employee.) Additional search recovered a badly decomposed fir with remnants of an axed face and partial over heal scar. This tree also had a location tag marked with B.R.C. (Blister Rust Control), and the date 6-2-37 in addition, several initials J R, L. A., H. T. and R. P. were etched on the sign.

The original survey of the line running north to this corner had calls for the north and south banks of the Rogue River. A site survey was performed in an attempt to correlate the called position of the river and that of the lines connecting the southwest corner of Section 20 and the suspected original one-quarter corner and proportional corner position. Although some 90 years had passed since the original survey, the called position for the north bank of the river utilizing the suspected original corner position agreed closely to that of the original call. In addition, numerous blazes (30 to 65 plus years old) were found along the line between the southwest corner and the suspected original one-quarter corner. Utilizing a proportional position the original calls failed to agree in any comparison made. In fact, utilizing a proportional position the line fails to intersect the river at any place along the line.

A cooperative evaluation of the above described evidence was made by myself and Jackson County Surveyor deputies along with consultation with County Surveyor E. A. McGinity. The mutual feeling being that the position of the recovered evidence was the best position for the west one-quarter corner considering the found evidence and comparison with calls for the Rogue River. The corner was subsequently monumented by Jackson County Surveyor Deputies.

NARRATIVE TO COMPLY WITH OREGON
REVISED STATUTES PARAGRAPH 209.250

Survey for: Rogue River National Forest
P. O. Box 520
Medford, Oregon 97501

Location: Section 20, Township 32 South, Range 3 East,
Willamette Meridian, Jackson County, Oregon

Basis of Bearing: Solar observation.

Purpose: To establish property corners and mark and post
National Forest ownership within Section 20.

Procedure: Prior to commencement of this survey an investigation
of corner control was made, the Bureau of Land Manage-
ment had retraced the entire west line and the west
half of the north line of Section 20 completing this
work in 1962. As a result of this survey, the west
one-quarter and the northwest Section corners were
re-established by proportional measurement. The west
one-sixteenth corner common to Sections 17 and 20 was
allegedly established at the mid-point and on line.
The north one-quarter and southwest Section corners
were remonumented from original evidence.

The east one-quarter had been remonumented by E. L.
Swain, R.S., No. 759 in 1974, from original evidence.
(Reference Jackson County Survey No. 5798-B.)

The south one-quarter corner had been remonumented from
original evidence in 1951 by County Surveyor C. Z.
Boyden with a subsequent remonumentation by the BLM in
1962.

With the above corner control identified I began a
random line traverse at the south quarter corner and
traversed northerly to the north one-quarter corner.
From the north quarter corner I ran westerly to the
northwest Section corner tying the west sixteenth
corner to my random traverse.

From my random traverse at a point near the center one-
quarter corner of Section 20, I ran a random traverse west
to the west one-quarter corner continuing northerly
closing my traverse on the northwest section corner
Section 20.

From my random traverse at a point near the center one-
quarter corner Section 20, I ran east to the east one-
quarter corner. This traverse was not closed; however,
each distance was measured twice with angles checked
by solar observation at a point near the east one-
quarter corner.