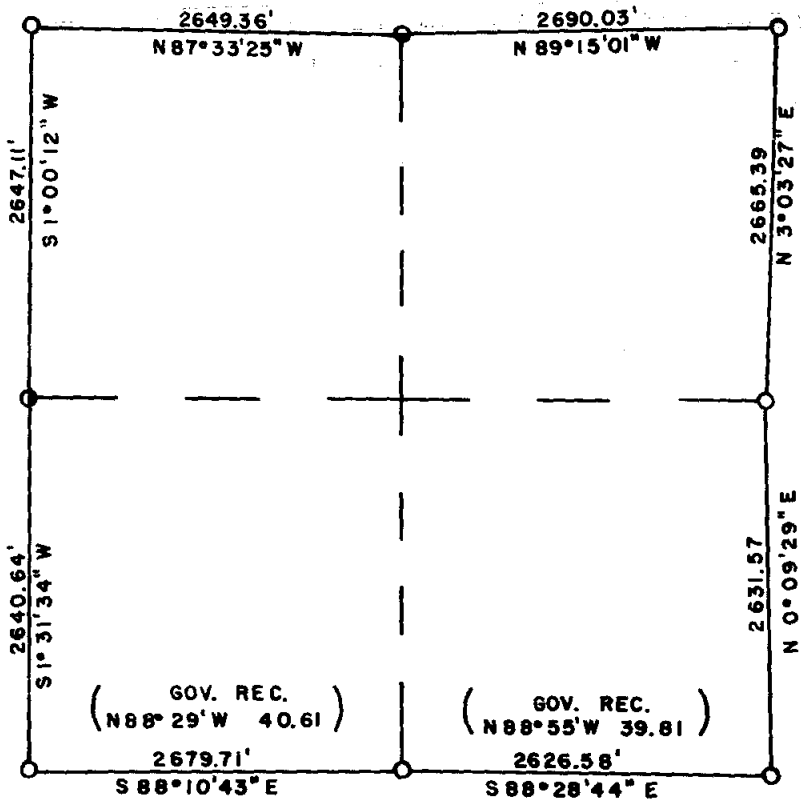


SECTION 36, T34 S, R2 E
 WILLAMETTE MERIDIAN

7072



GOV. REC.
 (N 88° 29' W 40.61)

GOV. REC.
 (N 88° 55' W 39.81)



DECEMBER 23, 1977
 SCALE 1" = 1000'
 ● L.S. 1086 ALUM. CAP
 ○ C.S. BRASS CAP
 ○ U.S. BRASS CAP

REGISTERED
PROFESSIONAL
 LAND SURVEYOR

Arthur R. Rambo

OREGON
 JULY 30, 1976
 ARTHUR R. RAMBO
 No. 1086

JACKSON COUNTY
 RECEIVED
 JAN 18 1978
 SURVEYOR

7072

Section 36 2E



10 SCALE

Scribed bearing trees

9 inch Douglas Fir S $83^{\circ} 00'$ W 23.74 feet
 $\frac{1}{4}$ S 36 LS 1086 B.T.
8 inch White Fir S $24^{\circ} 47'$ E 24.79 feet
 $\frac{1}{4}$ S 36 LS 1086 B.T.

Bearing West half N $87^{\circ} 33' 25''$ W

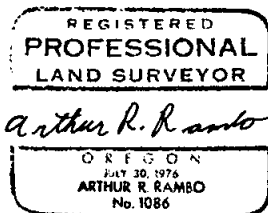
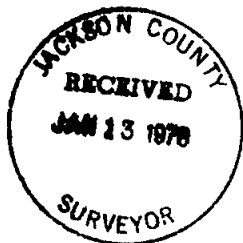
0.00 feet N $\frac{1}{2}$ Corner
2649.36 feet N.W. Corner

West Line: Bearing North half S $1^{\circ} 00' 12''$ W

0.00 feet N.W. Corner
2647.11 feet W $\frac{1}{2}$ Corner

Bearing South half S $1^{\circ} 31' 34''$ W

0.00 feet W $\frac{1}{2}$ corner
2640.64 feet S.W. Corner



SECTION 36 TOWNSHIP 34 SOUTH RANGE 2 EAST
WILLAMETTE MERIDIAN

Survey Narrative to Comply with O.R.S. 209.250

Date: December 23, 1977

Survey For: Medford Resources Corporation

Survey By: Arthur R. Rambo LS 1086

Bearing: From series of solar observations near S. W. Section Corner

Purpose: To monument corners and mark property lines

Procedure

A search of the records reveals four previous surveys in this area. The original survey of the entire section by Nathaniel Ford in 1856. A resurvey of the East line by Rufus Moore in 1883. A resurvey of the North line by Eugene B. Henry in 1908. A resurvey of the South line by Lynn Roseberry in 1977.

A search in the field revealed the following evidence:

- N.W. corner U.S.B.C. with B.T.'s set from original evidence
- W $\frac{1}{4}$ corner C.S.B.C. with B.T.'s set from original evidence
- S.W. corner U.S.B.C. with B.T.'s set from original evidence
C.S. 2" G.I. pipe alongside U.S.B.C.
- S $\frac{1}{4}$ corner U.S.B.C. with B.T.'s set from original evidence
- S.E. corner stone with U.S.B.C. and C.S. 2" G.I. pipe along-
side with B.T.'s set from original B.T.'s
- E $\frac{1}{4}$ corner U.S.B.C. set from original B.T.'s
- N.E. corner U.S.B.C. set from original B.T.'s
- N $\frac{1}{4}$ corner searched for eight man days but could find no original
evidence. Used the method of corner restoration on irregular
exteriors to reestablish the N $\frac{1}{4}$ corner S 36 T 34 S R 2 E

Ran transit and chain closed traverse survey around the section beginning at the Southwest corner.

South Line: Bearing Nest half S $88^{\circ} 10' 43''$ E

0.00 Feet S.W. Corner
2679.71 Feet S $\frac{1}{4}$ Corner
Bearing East half S $88^{\circ} 28' 44''$ E

0.00 Feet S $\frac{1}{2}$ Corner
2626.58 Feet S.E. Corner

East Line: Bearing South half N $0^{\circ} 09' 29''$ E

0.00 Feet S.E. Corner
2631.57 Feet E $\frac{1}{4}$ Corner
Bearing North half N $3^{\circ} 03' 27''$ E

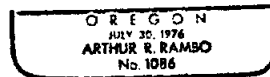
0.00 Feet E $\frac{1}{2}$ Corner
2665.39 Feet N.E. Corner

North Line: Bearing East half N $89^{\circ} 15' 01''$ W

0.00 Feet N.E. Corner
2690.03 Feet set $\frac{1}{4}$ Corner Sec. 36 Twp 34 S R 2 E only, by irregular boundary
method $5/8" \times 30"$ rebar with $1\frac{1}{2}"$ alum. Cap stamped:



Arthur R. Rambo



LS 1086

$\frac{1}{4}$ S 36
T34S R2E