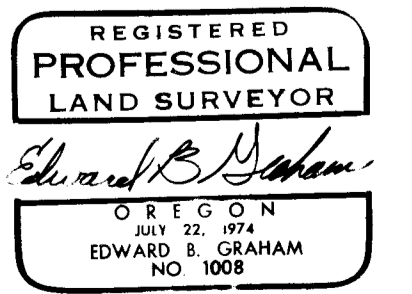
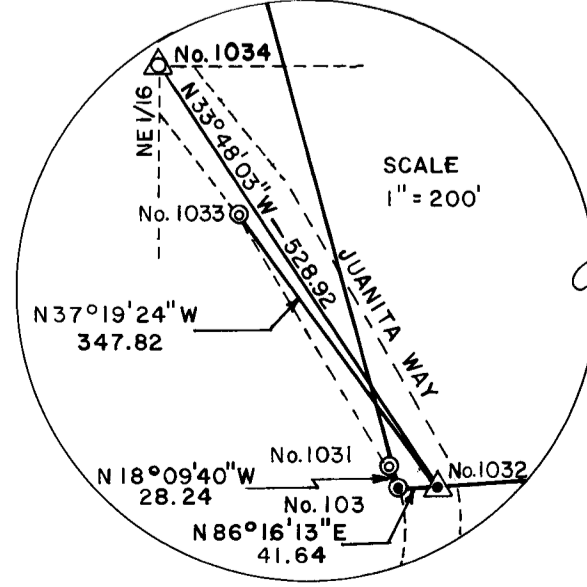
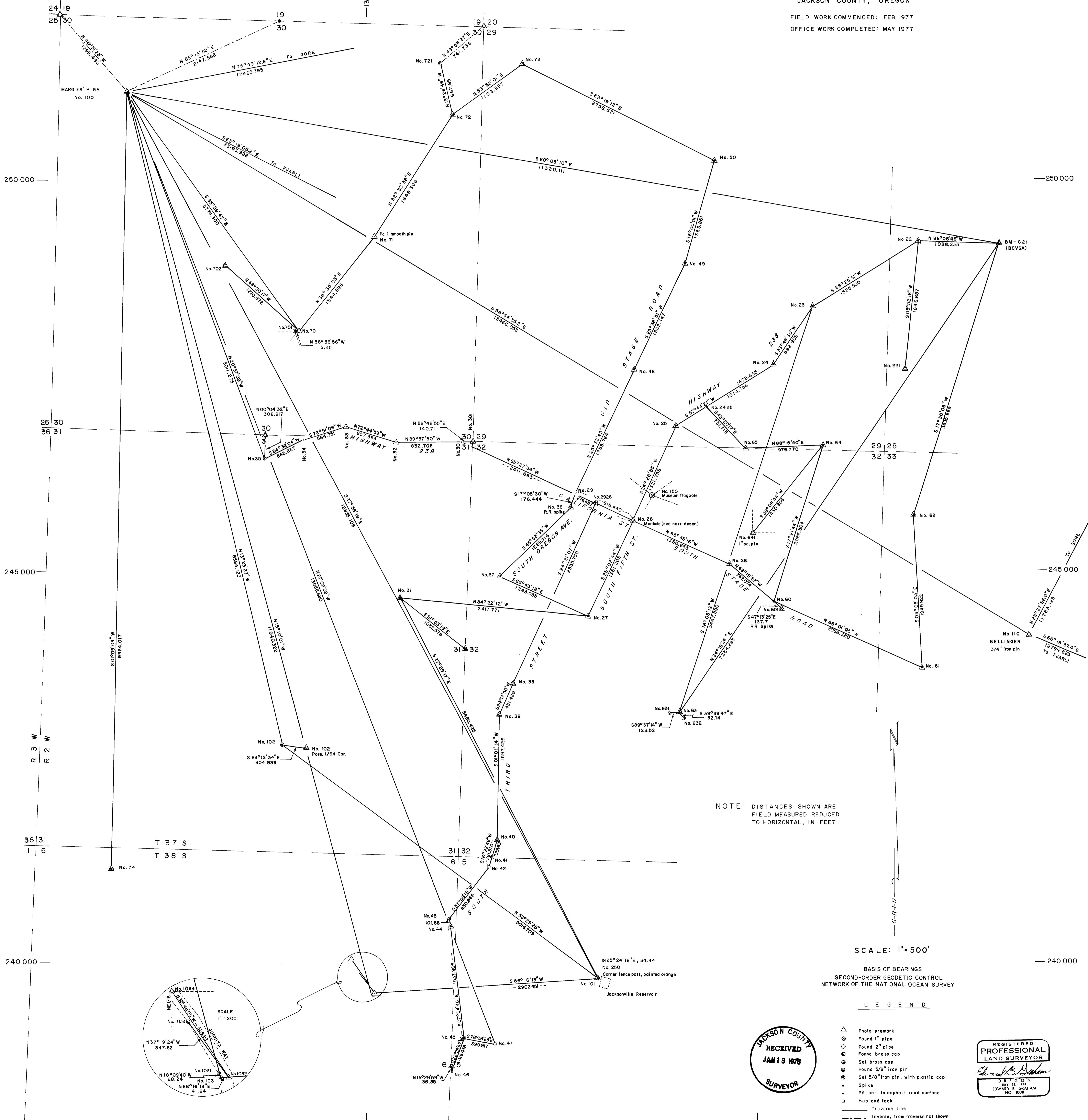


OREGON STATE COORDINATE SYSTEM CONTROL  
FOR  
JACKSONVILLE AERIAL PHOTOGRAPHY PROJECT  
BY  
JACKSON COUNTY SURVEYOR

LOCATED IN: Sec. 28, 29, 30, 31, 32, T37S, R2W  
and Sec. 5, 6, T38S, R2W

JACKSON COUNTY, OREGON

FIELD WORK COMMENCED: FEB. 1977  
OFFICE WORK COMPLETED: MAY 1977



- SCALE: 1" = 500'
- BASIS OF BEARINGS  
SECOND-ORDER GEODETIC CONTROL  
NETWORK OF THE NATIONAL OCEAN SURVEY
- LEGEND
- △ Photo premark
  - ⊙ Found 1" pipe
  - Found 2" pipe
  - Found brass cap
  - ⊙ Set brass cap
  - ⊙ Found 5/8" iron pin
  - ⊙ Set 5/8" iron pin, with plastic cap
  - Spike
  - PK nail in asphalt road surface
  - ⊙ Hub and tack
  - Traverse line
  - - - Inverse, from traverse not shown

## OREGON STATE COORDINATES CONT.

STATION	(SOUTH ZONE)		ELEV.	DESCRIPTION	LOCATION
	Y (NORTH)	Z (EAST)			
632	243 108.216	1 334 061.539		5/8" pin	PT lot 4, Blk. 4, Stage-coach Hills Unit #3
641	245 479.552	1 334 928.278	1534.3	1" square pin	SW cor. Mrs. Cardwells Addition
701	248 061.143	1 329 126.597		5/8" pin	NE co. Sur. # 6674
702	248 910.570	1 328 197.388	1908.3	5/8" pin	PC of curve, lot 5, Blk. 1, West Mont Hills Unit No. 1
721	251 475.471	1 330 944.281		5/8" pin	ENE cor. Lot 2, Livingston Heights Sub.
1021	242 740.190	1 329 232.246	2009.2	5/8" pin, origin unknown	Approx. 1/64th corner
1031	239 629.976	1 330 056.471		5/8" iron pin	PT 36+42.96 left, Juanita Way
1032	239 605.851	1 330 106.825	2154.5	Nail & shiner	4' from Estly edge A/C, vic. 36+40 Juanita Way
1034	240 045.330	1 329 812.611	2149.4	1" G.I. pipe	NE 1/16 Sec. 6, T38SR2W NW end of Juanita Way
2425	247 091.652	1 334 349.764	1524.8	Nail with head missing	7.7' S. of service Pole #1377, #635 J-Ville Hwy.
2926	245 863.654	1 322 923.078	1566.9	Nail and shiner	cl*S. 3rd St. at S. side Calif. St.
1/4 cor 19/30, T37S R2W	252 026.196	1 328 891.601		1" pipe	
1/4 cor 30/31, T37S R2W	246 745.629	1 328 707.326	1727.4	2" pipe	
1/4 cor 31/32, T37S R2W	244 003.783	1 331 259.860	1680.1	Brass cap in conc.	NE of intersec. Applegate and Hill Sts.
1/4 cor 5/6, T38S R2W	238 675.424	1 331 087.120	1921.5	Brass cap in conc.	Intersec. S. 3rd and Juanita Way
Sec. Cor. 19, 20, 29, 30, T37S R2W	251 952.436	1 331 512.240		2" pipe	
Sec. Cor. 19, 30 T37S R2W and 24, 25, T37SR3W	252 109.210	1 326 091.618		2" pipe	
Sec. Cor. 29, 30, 31 and 32 T37S R2W	246 645.642	1331 357.614	1613.3	5/8" pin with plastic cap	

\*cl = Centerline

## OREGON STATE COORDINATES CONT.

STATION	(SOUTH ZONE)		ELEV.	DESCRIPTION	LOCATION
	Y (NORTH)	Z (EAST)			
65	246 559.934	1 334 851.497	1531.4	Nail with punch	cl Huener Ln. at G. St.
70	248 060.331	1 329 141.826	1814.5	Hub and tack	Estly. extension of North line Sur.No. 6674
71	249 267.931	1 330 105.297	1768.2	1" smooth pin	N-S fence, E. side Paradise Ranch Rd. @ Morton Way
72	250 825.976	1 331 099.564	1692.1	Hub and tack	S. of Livingstone Rd. about 150 ft.
73	251 475.388	1 331 992.317	1668.1	Hub and tack	About 30 ft. Southeast of burned out house foundat.
74	241 195.331	1 326 742.029	1690.5	5/8" pin with plastic cp.	
100 Margies' High	251 126.453	1 326 941.598	2632.7	Brass cap in concrete	For access permission contact Jackson County Surveyor's office
101 Reservoir	239 791.921	1 332 961.170	2189.5	5/8" pin with plastic cap	10' W. of fence, W. side Jacksonville Reservoir
102	242 776.243	1 328 929.472	2059.2	5/8" pin with pls. cap	1400 Cady Rd., about 10' NE of swimming pool
103	239 603.143	1 330 065.274	2163.2	5/8" pin with plst. cap	35' W. of cl, vic. 36+40 Juanita Drive
110 Bellinger	244 173.233	1 338 472.528	1718.9	3/4 " pin	NW of top of Bellinger Hill, N. of Bellinger Ln.
111 Gore	254 513.46	1 344 078.77	1518	Brass cap in Concrete	Atop Hanley Hill, @ intsec Hanley & Rossanley Rds.
112 Fjarli	236 222.403	1 356 598.485	1790	Brass cap in concrete	Vicinity S. Stage Rd. & Kings Highway
150 Museum Flagpole	245 967.828	1 333 641.484			Flagpole mast atop J-Ville Museum
221	247 567.273	1 336 886.859	1480.0	Hub and tack	1 28' NE of NE cor of Mini-Storage bldg. off of Major Lane
250 Reservoir corner post	239 823.031	1 332 946.395		cor. fence post, painted orange	NE cor. J-Ville Reservoir fence
601	244 506.127	1 335 309.722	1580.9	RR spike	cl Stagecoach Dr. at intersection S. Stage Rd.
631	243 178.436	1 333 879.122		5/8" pin	NW cor. lot 4, Blk. 4, Stage coach Hill Unit #3

\*cl = Centerline

## OREGON STATE COORDINATES CONT.

STATION	(SOUTH ZONE)		ELEV.	DESCRIPTION	LOCATION
	Y (NORTH)	Z (EAST)			
38	243 553.468	1 331 877.466	1646.5	5/8" pin	cl*So. 3rd St. & Sterling (see surv. #3438)
39	243 160.193	1 331 699.919	1667.2	5/8" pin	In A/C, 860 So. 3rd St. (see survey #3438)
40	241 563.087	1 331 671.468	1731.3	5/8" pin	cl*So. 3rd St. (see survey #3438)
41	241 342.779	1 331 606.713	---	5/8" pin	cl*So. 3rd St. @ S. line Sec. 32 (see survey #3438)
42	241 215.964	1 331 569.438	1743.3	Hub and tack	
43	240 553.586	1 331 067.796	1805.0	Hub and tack	
44	240 452.681	1 331 080.327	1801.5	Nail and shiner	cl*So. 3rd St.
45	239 027.451	1 331 257.330	1882.2	5/8" pin with plastic cap	E. off A/C, So. 3rd St.
46	238 639.915	1 331 096.967	1917.4	40d spike	cl*driveway at S. end of 3rd St.
47	238 948.692	1 331 649.323	1892.9	hub and tack	In pasture
48	247 566.379	1 333 427.209	1554.1	Railroad spike	Intersection of N. Oreg. and Gold Terrace
49	248 920.376	1 334 077.319	1544.7	60d spike, 1" deep, gravel shoulder	4 1/2' W. of reflector post, 1' from A/C, vic. SW cor. orchard
50	250 237.026	1 334 454.872	1515.4	Nail and shiner	E. edge A/C, N. of inter section Stage Rd. & Livingstone Rd.
60	244 599.652	1 335 208.642	1584.7	Nail and shiner	S. fogline, S. Stage Rd. vic. Stagecoach Hills
61	243 759.025	1 337 098.327	1596.1	Nail and shiner	N. fogline, S. Stage Rd. at dump entrance
62	245 705.828	1 336 991.726	1554.6	Hub and tack	In pasture
63	243 179.254	1 334 002.640	1898.8	5/8" pin	Lot 3, Blk. 4, Stagecoach Hills Unit No. 3
64	246 589.665	1 335 830.831	1502.7	Nail and shiner	cl*of road, 710 Huener Lane

cl=  
\* Centerline

7044

## OREGON STATE COORDINATES

STATION	(SOUTH ZONE)		ELEV.	DESCRIPTION	LOCATION
	Y (NORTH)	Z (EAST)			
21 (BCVSA BM C-21)	249 171.094	1 338 091.091	1453.486	Brass cap in concrete	So. of Hwy. 238, NW cor. Crater Fuel lot.
22	249 205.223	1 337 055.306	1468.4	Nail and shiner	5 ft. North of North fogline.
23	248 375.075	1 335 704.585	1491.8	Nail and shiner	4.5 ft. North of North fogline.
24	247 633.277	1 335 207.838	1506.9	Nail and shiner	5 ft. South of fogline, near 820 J-Ville Hwy.
25	246 844.061	1 333 957.520	1534.4	Nail & shiner,	1 1/2' So. of edge A/C, 5 ft. North of fogline, 525 J'Ville Hwy.
26	245 641.067	1 333 410.587	1557.1	Center of manhole, four straddle punches in rim.	SW cor. Calif. & Fifth Streets.
27	244 416.154	1 332 838.214	1654.0	Nail and Shiner	Front of driveway, 540 So. Fifth St.
28	245 086.466	1 334 642.016	1566.8	Nail and shiner	North fogline, 645 E. Calif.
29	245 979.728	1 332 668.855	1573.6	Nail and shiner	SW cor. intersection Calif. and Oregon St.
30	246 642.651	1 331 216.936	1617.2	Nail and shiner	2' North of North fogline Hwy. 238.
31	244 653.383	1 330 431.740	1801.7	5/8" pin, flush, with plastic cap.	On terrace East of house @ 740 S. Oreg., 6' from shoulder, 29.5' So. of wooden fence.
32	246 648.022	1 330 384.322	1636.4	Nail and shiner	So. edge a/c, Hwy. 238 vic. rock quarry.
33	246 842.943	1 329 756.578	1662.5	Nail and shiner	No. edge a/c, Hwy. 238 vic. 910 W. Calif.
34	246 670.551	1 329 197.883	1677.6		
35	246 436.734	1 328 706.919	1689.9	5/8" pin with plastic cap.	Intersection Hwy. 238., Reservoir Rd. & Mary Ann
36	245 811.052	1 332 616.990	1578.9	Fd. Railroad spike	Intersection W. Main & So. Oregon Streets.
37	244 927.227	1 331 705.170	1625.1	40d spike, 3" deep in A/C	3' from No. edge A/C, So Oreg. St., 20' So. of tel. pedestal

SURVEY NARRATIVE TO COMPLY WITH PARAGRAPH 209.250 O.R.S.

**SURVEY FOR:** Jackson County

**PURPOSE:** To establish Oregon Coordinate System Control, with accuracy of the primary control net at least equivalent to National Geodetic Survey second order standards.

**BY:** Jackson County Surveyors Office.

**DATE:** May, 1977

**LOCATION:** Points were located in Sections 28, 29, 30, 31, 32, 33, Township 37 South, Range 2 West, and Sections 5, 6, Township 38 South, Range 2 West, W.M., Jackson County, Oregon.

**PROCEDURE:** Horizontal control for this traverse project was provided by the following second-order triangulation stations of the National Network:

FJARLI (JCS) 1968  
GORE (USE) 1968

Positions of these points were held fixed in all computations and adjustments, and in determining all closing errors.

All horizontal directions were measured with a Kern DKM2 one-second theodolite. Six sets were turned for each angle of the primary control net, using six positions of the horizontal circle and each set consisting of a direct and reverse pointing.

All traverse distances were measured with a Geodimeter Model 76 electronic distance meter. All angle and distance measurements of the primary control net were confined to overcast days when refraction would be near a minimum.

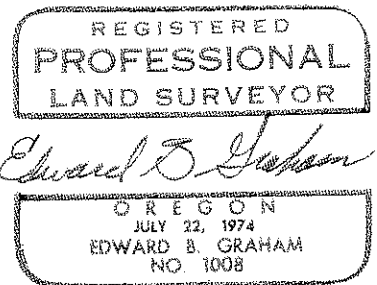
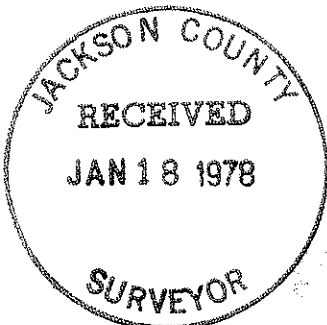
Of the five geometric figures of the primary control net, the largest angular error of closure was 3.6 seconds. After angular adjustment, the maximum closing error in position was 1:207,000. Of the secondary traverses in the Jacksonville area, the maximum closing error in position, after angular adjustment was 1:69,000. All closures were adjusted by the Crandell Rule.

Elevations throughout this project were determined by trig. leveling. Vertical control was taken from BM C-21 (BCVSA), 1968.

An average latitude of 42°18'50" for downtown Jacksonville was used for determining the scale ratio for the secondary traverses.

For detail information refer to Jackson County Surveyors office, Job File Number 77-1.

The purpose of this survey was for photogrammetry control and was not meant to be used for property boundary determination.



Edward B. Graham  
Professional Land Surveyor