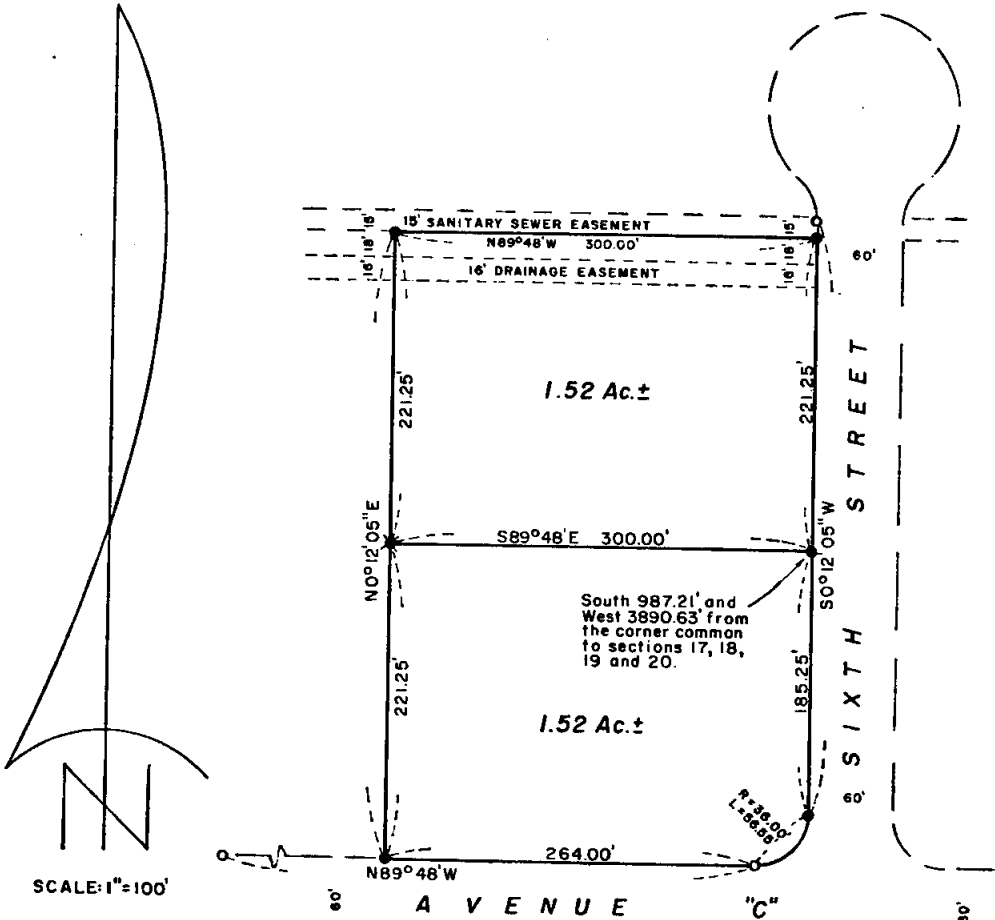


70421

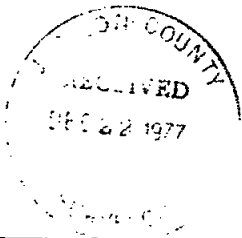
SURVEY FOR WHITE CITY CORPORATION

LOCATED IN THE N.W. 1/4 OF SECTION 19, T.36S.,
R.1W., W.M.

BY: MARK E. BOYDEN
DECEMBER 22, 1977



BASIS OF BEARINGS:
RECORDED SURVEY NO. 6311



- Found 3/4" re-bar flush
- Set 3/4" X 24" re-bar flush
- ✱ Set 3/4" X 30" re-bar flush

PROFESSIONAL

 MARK E. BOYDEN

S19 36 1W

7042

Survey No. 7042

SURVEY NARRATIVE TO COMPLY WITH O.R.S. 209.250

FOR: White City Corporation
White City, Oregon

PURPOSE: To monument and describe two tracts within the White City Corporation ownership fronting Sixth Street, proposed to be conveyed, being located in the NW 1/4 of Section 19, T36S R1W, W.M.

PROCEDURE: From controls previously established on Recorded Survey Nos. 6311 and 6989, monumented the desired tracts at positions shown on the annexed map.

December 22, 1977

