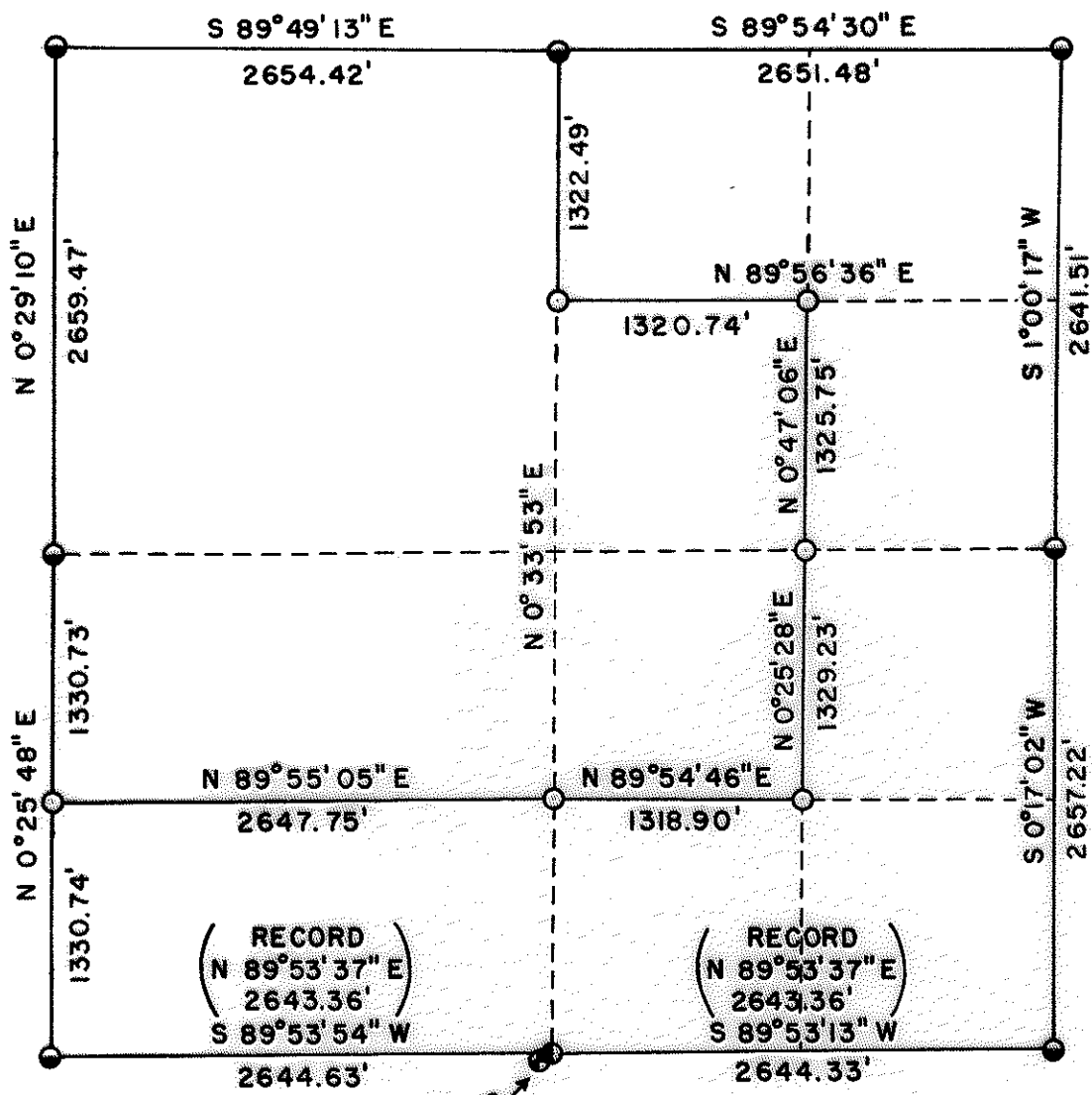


SECTION 3, T.39S., R.3E., W.M.

6102

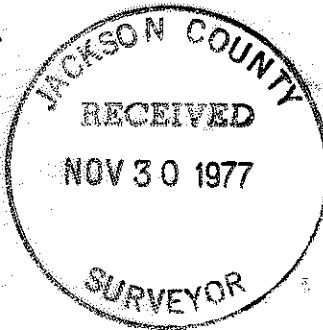


SEE DETAIL "A"

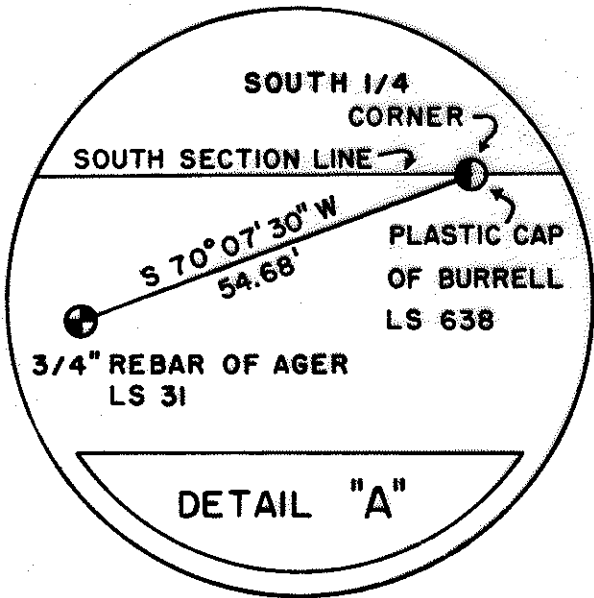


LEGEND

- = C.S.B.C.
- = L.S. 1086 A.C.
- ◐ = L.S. 638 P.C.
- ⊙ = 3/4" REBAR



OCTOBER 1977  
SCALE 1" = 1000'



REGISTERED PROFESSIONAL LAND SURVEYOR

Arthur R. Rambo

OREGON  
JULY 30, 1976  
ARTHUR R. RAMBO  
No. 1086

7019

S3 39 3E

INTERIOR LINES: Ran from S 1/16 Corner common to Sec. 3 and Sec. 4, T 39 S.,  
R 3 E., W.M.  
N 89°55'05" E 2647.75 feet to set CS 1/16 Corner  
Sec. 3, 5/8" x 30" rebar with Aluminum Cap stamped: LS 1086  
Scribed Bearing Trees: LS 1086 BT CS 1/16 S3  
11.7" White Fir N 69°49'30" W 31.60 feet  
11.7" White Fir S 15°36' E 6.65 feet T39S R3E

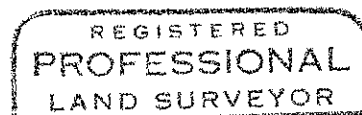
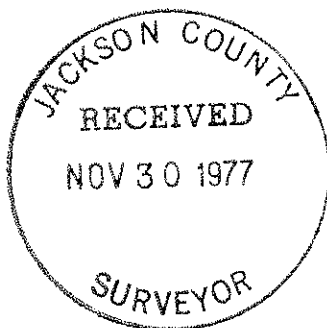
Thence run N 89°54'46" E 1318.90 feet to set  
S. E. 1/16 Corner Sec. 3, 5/8" x 30" rebar with  
Aluminum Cap stamped: LS 1086  
Scribed Bearing Trees: LS 1086 BT SE 1/16 S3  
6.4" White Fir N 54°28'17" W 12.40 feet  
9 " White Fir S 13°12'45" E 8.75 feet T39S R3E

Thence run N 0°25'28" E 1329.23 feet to set  
C.E. 1/16 Corner Sec. 3, 5/8" x 30" rebar with  
Aluminum Cap stamped: LS 1086  
Scribed Bearing Trees: LS 1086 BT CE 1/16 S3  
8.2" White Fir S 27°50' E 32.58 feet  
12 " White Fir S 30°28'30" W 49.95 feet T39S R3E

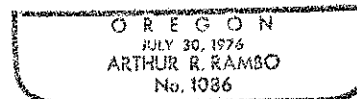
Thence run N 0°47'06" E 1325.75 feet to set  
N.E. 1/16 Corner Sec. 3, 5/8" x 30" rebar with  
Aluminum Cap stamped: LS 1086  
Scribed Bearing Trees: LS 1086 BT NE 1/16 S3  
8.2" White Fir S 81°37'30" W 18.25 feet  
11.6" Douglas Fir N 23°27' W 17.85 feet T39S R3E

Thence run S 89°56'36" W 1320.74 feet to set  
C.N. 1/16 Corner Sec. 3, 5/8" x 30" rebar with  
Aluminum Cap stamped: LS 1086  
Scribed Bearing Trees: LS 1086 BT CN 1/16 S3  
9.7" White Fir S 51°38'30" W 1.25 feet  
14.5" White Fir S 55°04' E 56.05 feet T39S R3E

Thence run N 0°33'53" E 1322.49 feet to N. ¼  
Corner Sec. 3, T. 39 S., R. 3 E., W.M.



*Arthur R. Rambo*



SECTION 3, TOWNSHIP 39 SOUTH, RANGE 3 EAST,  
WILLAMETTE MERIDIAN

7019

October, 1977

NARRATIVE:

OBJECT: For Medford Resources Corporation to monument property corners and mark property lines in Sec. 3, T. 39 S., R. 3 E., W. M.

Found following evidence:

- S. W. Corner C.S. Brass Cap and Bearing Trees set from original evidence.
- W. 1/4 Corner C.S. Brass Cap and Bearing Trees set from original evidence.
- N. W. Corner C.S. Brass Cap and Bearing Trees set from original evidence.
- N. 1/4 Corner C.S. Brass Cap and Bearing Trees set from original evidence.
- N. E. Corner C.S. Brass Cap and Bearing Trees set from original evidence.
- E. 1/4 Corner C.S. Brass Cap and Bearing Trees set from original evidence.
- S. E. Corner C.S. Brass Cap and Bearing Trees set from original evidence.
- S. 1/4 Corner found 3/4 in. rebar bent over set by L.E. Ager LS 31 from a stump which he

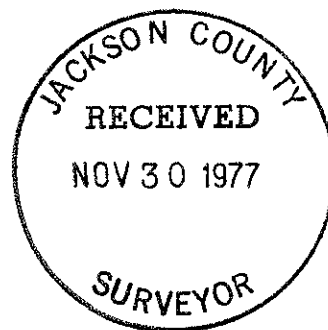
called the S.W.B.T. (recorded survey No. 3544). I also found a 1 1/4 in. plastic cap near center line of county road marked Burrell RLS 638 set by proportion (recorded Survey No. 6103). Mr. Burrell stated that when he examined the stump of the called S.W.B.T. it was unopened. He opened said stump and there was no evidence to indicate that it was an original Bearing Tree.

Upon examining this stump which is open at this time, I could find no evidence to substantiate it as an original Bearing Tree. Therefore, due to the lack of evidence to support Ager's pin, I accept the proportioned corner set by Burrell on Survey No. 6103. Ager's pin bears S 70° 07' 30" W. 54.68 feet from the South 1/4 Corner.

Ran transit and chain closed traverse survey around section. Basis of bearings are by a series of solar observations at the South West Section Corner.

WEST LINE: Bearing South half N 0°25'48" E  
 0.00 feet S. W. Corner  
 1330.74 feet Set S 1/16 Corner common to Sec. 3 and Sec. 4, T. 39 S., R. 3 E., W. M. by proportionate measurement, 5/8" x 30" rebar with Aluminum Cap stamped:  
 Scribed Bearing Tree LS 1086 B.T.  
 8.4" White Fir N 76°09' W 10.75'  
 12.7" White Fir S 47°27'30" E 30.89'

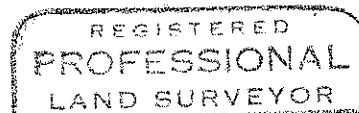
LS 1086  
S4 S S3  
1/16  
T39S R3E



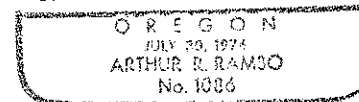
2661.47 feet West 1/4 Corner  
 Bearing North half N 0°29'10" E  
 0.00 feet West 1/4 Corner  
 2659.47 feet North West corner

NORTH LINE: Bearing West half S 89°49'13" E  
 0.00 feet North West Corner  
 2654.42 feet North 1/4 Corner  
 Bearing East Half S 89°54'30" E  
 0.00 feet North 1/4 Corner  
 2651.48 feet North East Corner

EAST LINE: Bearing North half S 1°00'17" W  
 0.00 feet North East Corner  
 2641.51 feet East 1/4 Corner  
 Bearing South half S 0°17'02" W  
 0.00 feet East 1/4 Corner  
 2657.22 feet South East Corner



*Arthur R. Rambo*



SOUTH LINE: Bearing East half S 89°53'13" W  
 0.00 feet South East Corner  
 2644.33 feet South 1/4 Corner  
 Bearing West half S 89°53'54" W  
 0.00 feet South 1/4 Corner  
 2644.63 feet South West Corner