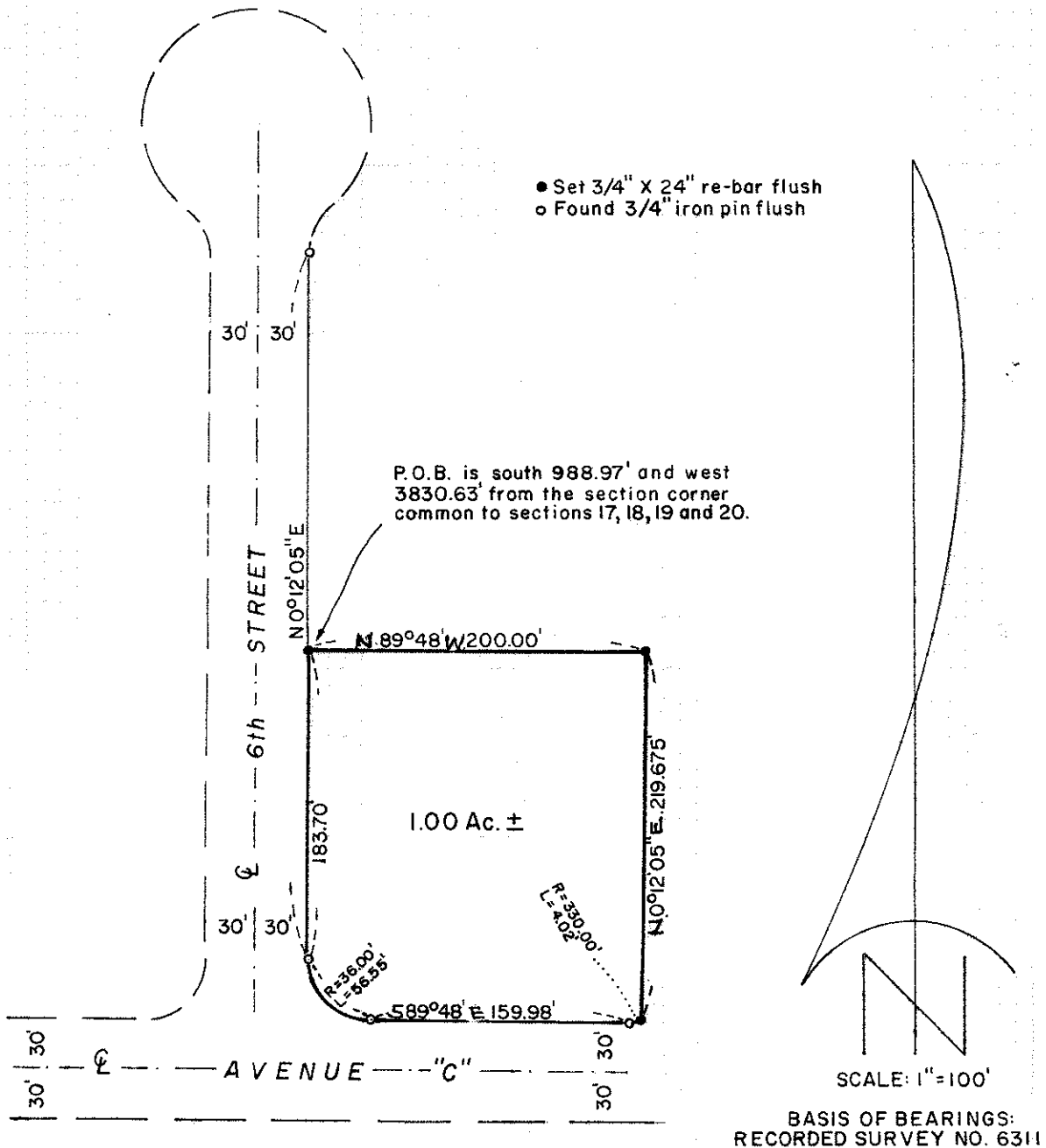
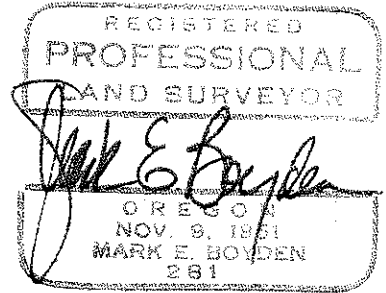
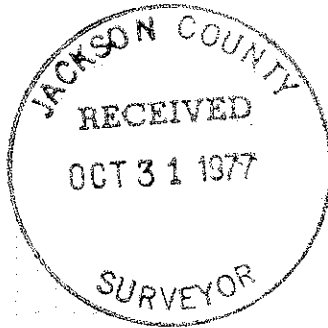


6989

6989
6869

SURVEY FOR: WHITE CITY CORPORATION
LOCATED IN THE N.W. 1/4 OF SECTION 19, T.36S., R.1W., W.M.

BY: MARK E. BOYDEN
SEPT. 26, 1977



6989 1

S19 36 1W

Survey No. 6989

SURVEY NARRATIVE TO COMPLY WITH O.R.S. 209.250

FOR: White City Corporation
White City, Oregon

PURPOSE: To monument and describe a tract lying in the Northeast corner of Sixth Street and Avenue 'C' in the NW 1/4 Qtr Section 19, T36SR1W, W.M.

PROCEDURE: From Street controls found as previously set on Recorded Survey No. 6311, monumented the desired tract at positions shown on the annexed map.

September 26, 1977

