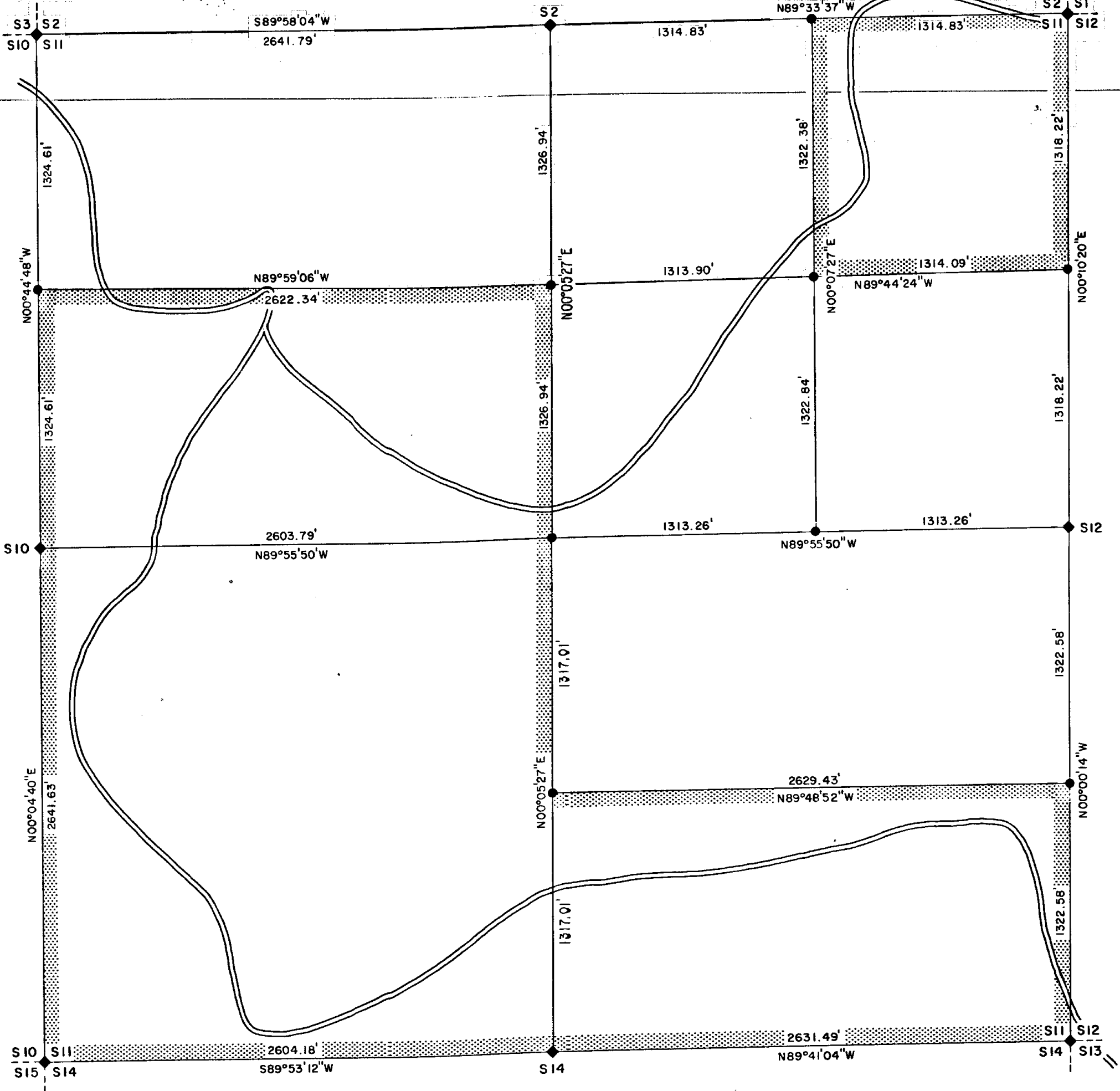


6930

6930



Property line survey in Section 11,
T.38S., R.2E., Willamette Meridian,
Jackson County, Oregon.

ADMINISTRATIVE SURVEY


FOR: U. S. Bureau of Land Management
Medford District Office
Medford, Oregon

SURVEY BY: Robert L. Aarseth

DATE: August 25, 1977

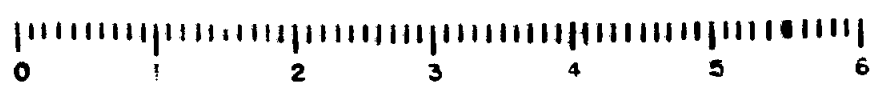
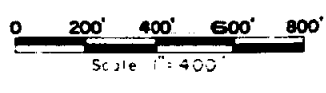
DRAWN BY: R. H. Becker

- ◆ Original corner found.
- Corner set, 5/8" rebar 24" long.

 Lines true lined,
blazed and posted.

NOTE:
Bearings are taken to the center
of the new bearing tree with
an aluminum nail driven into tree
at the base and a blaze.
Distance is measured to an
aluminum nail in the side.

N



10 SCALE

JACKSON COUNTY
RECEIVED
SEP 14 1977
SURVEYOR

6930

6930

SH 38 2E

Begin marking and blazing the true line to the E 1/16 sec. cor. of secs. 2 and 11.

2645.22 The E 1/16 sec. cor. of secs. 2 and 11.

From the N 1/16 sec. cor. bet. sec. 11 and 12.

N. 89° 44' 24" W., on the E. and W. centerline of the NE $\frac{1}{4}$ of sec. 11.

Begin marking and blazing the true line to the NE 1/16 sec. cor.

1314.09 The NE 1/16 sec. cor. of sec. 11.

2627.99 The center N 1/16 sec. cor. of sec. 11.

From the S 1/16 sec. cor. of secs. 11 and 12.

N. 89° 48' 52" W., on the E. and W. centerline of the SE $\frac{1}{4}$ of sec. 11.

Begin marking and blazing the true line to the center S 1/16 sec. cor.

2629.43 The center S 1/16 sec. cor. of sec. 11.

From the center N 1/16 sec. cor. of sec. 11.

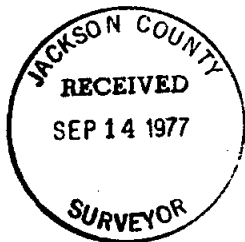
N. 89° 59' 06" W., on the E. and W. centerline of the NW $\frac{1}{4}$ of sec. 11.

Begin marking and blazing the true line to the N 1/16 sec. cor. of secs. 10 and 11.

2622.34 The N 1/16 sec. cor. of secs. 10 and 11.

FIELD ASSISTANTS

Frank A. Tuers - Consultant
Thomas C. Zirkle
Darren Pree



Survey by:
Robert L. Harveth
Survey Tech
U.S. BLM
Medford, Oregon
97501

Set an iron rebar, 5/8 in. diam., 24 ins. long, 20 ins. in the ground, in a mound of stone, 2 ft. at base, 8 ins. high,

from which:

A fir, 13 ins. diam., bears N. 58 3/4° E., 20.15 ft. dist.

A fir, 10 ins. diam., bears N. 11° W., 10.10 ft. dist.

From this point, a point established by person(s) unknown, monumented with an iron pipe, 1/2 in. diam., loosely set, protruding 10 ins. above ground, in a mound of stone, 1 ft. at base, 2 ins. high, bears N. 17 1/2° E., 47.60 ft. dist.

3960.96 Point for the center N 1/16 sec. cor. of sec. 11.

Set an iron rebar, 5/8 in. diam., 24 ins. long, 20 ins. in the ground, in a mound of stone 2 ft. at base, 8 ins. high,

from which:

A fir, 11 ins. diam., bears East, 11.70 ft. dist.

A fir, 16 ins. diam., bears S. 77 1/2° W., 36.00 ft. dist.

From this point, a point established by person(s) unknown, monumented with an iron pipe, firmly set, protruding 6 ins. above ground in a mound of stone, 1 1/2 ft. at base, 3 ins. high, bears N. 59 3/4° E., 54.65 ft. dist.

5287.90 The 1/4 sec. cor. of secs. 2 and 11.

From the 1/4 sec. cor. bet. secs. 11 and 12.

N. 89° 55' 50" W., on the E. and W. centerline of sec. 11.

1313.26 Point for the center E 1/16 sec. cor. of sec. 11.

Set an iron rebar, 5/8 in. diam., 24 ins. long, 20 ins. in the ground.

Corner is located in meadow where bearing trees are not within a reasonable distance.

2626.52 The center 1/4 sec. cor. of sec. 11.

5230.31 The 1/4 sec. cor. of secs. 10 and 11.

From the center E 1/16 sec. cor. of sec. 11.

N. 0° 07' 27" E., on the N. and S. centerline of the NE 1/4 of sec. 11.

1322.84 Point for the NE 1/16 sec. cor. of sec. 11, at the intersection with the E. and W. centerline of the NE 1/4.

Set an iron rebar, 5/8 in. diam., 24 ins. long, 20 ins. in the ground in a mound of stone, 2 ft. at base, 8 ins. high,

from which:

A fir, 15 ins. diam., bears S. 38 1/2° E., 5.05 ft. dist.

A fir, 11 ins. diam., bears N. 15 1/2° W., 10.90 ft. dist.

A fir, 11 ins. diam., bears S. 70° E., 9.00 ft. dist.

A fir, 10 ins. diam., bears S. 87° W., 2.10 ft. dist.

2629.65 The 1/4 cor. of secs. 2 and 11, perpetuated by Roseberry and Evans, in 1971, monumented with an iron post, 2 1/2 ins. diam., firmly set, protruding 4 ins. above ground, with brass cap mkd.

T38S R2E
1/4 S 2
S11
1971

from which the remains of the original bearing trees:

A root hole, bears N.33° E., 19 lks. dist., alongside of which is lying a fir, 11 ins. diam., with visible scribe marks, 1/4S on partly open blaze.

A fir, 17 ins. diam., bears S. 19 1/2° W., 15 lks. dist., with healed blaze.

and bearing tree mkd. by Roseberry and Evans in 1971:

A fir, 17 ins. diam., bears N. 38° E., 38 lks. dist., with healed blaze.

S. 89° 58' 04" W., beginning new measurement.

2641.79 The cor. of secs. 2, 3, 10, and 11.

Subdivision of Section 11
T. 38 S., R. 2 E., Willamette Meridian, Oregon

From the 1/4 sec. cor. of secs. 11 and 14.

N. 0° 05' 27" E., on the N. and S. centerline of sec. 11.

1317.01 Point for the center S 1/16 sec. cor. of sec. 11.

Set an iron rebar, 5/8 in. diam., 24 ins. long, 20 ins. in the ground, in a mound of stone, 2 1/2 ft. at base, 8 ins. high,

from which:

A fir, 11 ins. diam., bears S. 86 1/2° E., 18.60 ft. dist.

A fir, 16 ins. diam., bears S. 72 1/2° W., 19.05 ft. dist.

From this point, a point established by person(s) unknown, monumented with a mound of stone, 3 ft. at base 18 ins. high, bears N. 59° E., 14.7 ft. dist.

Begin marking and blazing the true line to the center N 1/16 sec. cor.

2634.02 Point for the center 1/4 sec. cor. of sec. 11 at the intersection with the E. and W. centerline.

N. 0° 44' 48" W., beginning new measurement, continue marking and blazing the true line to the N 1/16 sec. cor. bet. secs. 10 and 11.

1324.61 Point for the N 1/16 sec. cor. of secs. 10 and 11.

Set an iron rebar, 5/8 in. diam., 24 ins. long, 20 ins. in the ground, from which:

A pine, 31 ins. diam., bears S. 41½° E., 59.30 ft. dist.

A pine, 16 ins. diam., bears N. 89½° W., 32.60 ft. dist.

From this point, a point established by person(s) unknown, bears S. 28° E., 1.60 ft. dist., monumented with an iron pipe, ½ in. diam., loosely set, protruding 3 ins. above ground.

Corner located in fence line extending north and south at edge of meadow.

2649.22 The sec. cor. of secs. 2, 3, 10, and 11, perpetuated by Roseberry and Evans, in 1971, monumented with an iron post, 2½ ins. diam., firmly set, protruding 4 ins. above ground, in a mound of stone, 3 ft. at base to top, with brass cap mkd.

T38S R2E
S3|S2
S10|S11
1971

from which the original bearing trees:

A fir, 33 ins. diam., bears N. 31½° E., 32 lks. dist., with healed blaze.

A fir, 23 ins. diam., bears S. 62° E., 12 lks. dist., with healed double blaze.

A fir, 12 ins. diam., bears S. 39° W., 35 lks. dist., with visible scribe marks T38S R2 on partly healed blaze.

A fir, 19 ins. diam., bears N. 57° W., 29 lks. dist., to face, with healed double blaze.

and bearing tree mkd. by Roseberry and Evans in 1971:

A fir, 14 ins. diam., bears S. 58 3/4° W., 41.5 lks. dist., with visible scribe marks T38S R2E S10 BT on partly healed blaze.

Corner located approximately 200 ft. north of Shale City Road.

From the cor. of secs. 1, 2, 11, and 12.

N. 89° 33' 37" W., bet. secs. 2 and 11, marking and blazing the true line to the E 1/16 sec. cor. of sec. 2 and 11.

1314.83 Point for the E 1/16 sec. cor. of secs. 2 and 11.

Set an iron rebar, 5/8 in. diam., 24 ins. long, 20 ins. in the ground, from which:

S 89° 53' 12" W., beginning new measurement, continue marking and blazing true line.

2604.18 The cor. of secs. 10, 11, 14, and 15, perpetuated by Marvin C. Ramsey (RS 404), in 1963, as per Jackson County Survey No. 2301, monumented with an iron pipe, 1½ ins. diam., firmly set, protruding 6 ins. above ground, in a mound of stone, 3 ft. at base and 18 ins. high, with a metal washer mkd. RS 404.

from which the remains of the original bearing trees:

A fir, 31 ins. diam., bears N. 35° E., 16 lks. dist., with visible scribe marks B on open blaze.

A fir, 30 ins. diam., bears S. 50° E., 20 lks. dist., with rotted blaze and scribe marks.

and bearing trees mkd. by Ramsey in 1963:

A fir, 13 ins. diam., bears N. 70° E., 23 lks. dist., with healed blaze.

A fir, 20 ins. diam., bears S. 59° E., 8½ lks. dist., with visible scribe marks RS 404 BT on partly healed blaze.

A fir, 20 ins. diam., bears S. 68° W., 14 lks. dist., with visible scribe marks S15 RS 404 B on partly healed blaze.

A fir, 18 ins. diam., bears N. 61° W., 23 lks. dist., with healed blaze.

From the cor. of secs. 10, 11, 14, and 15.

N. 0° 04' 40" E., bet. secs. 10 and 11, marking and blazing the true line.

2641.63 The ¼ sec. cor. of secs. 10 and 11, perpetuated by C. Z. Boyden, Deputy County Surveyor, in 1936, and subsequently remonumented by Roseberry and Evans, in 1971, monumented with an iron post 2½ ins. diam., firmly set, protruding 4 ins. above ground, with brass cap mkd.

T38S R2E
¼
S10|S11
1971

from which the remains of the original bearing trees:

A root hole, bears N. 46° E., 18 lks. dist., alongside of which is lying a fir, 28 ins. diam., with visible scribe marks ½S on open blaze.

and a bearing tree mkd. by Boyden in 1936:

A cedar, 15 ins. diam., bears S. 64½° W., 32½ lks. dist., with visible scribe marks CS BT on open blaze.

and bearing trees mkd. by Roseberry and Evans in 1971:

A fir, 26 ins. diam., bears N. 58½° E., 125 lks. dist., with visible scribe marks ½ S11 BT on partly healed blaze.

A cedar, 15 ins. diam., bears N. 15° W., 71 lks. dist., with visible scribe marks ½ S10 BT on partly healed blaze.

Begin marking and blazing the true line to the sec. cor. of secs. 1, 2, 11, and 12.

- 2636.44 The cor. of secs. 1, 2, 11, and 12, perpetuated by Lynn M. Roseberry and Larry D. Evans, Cadastral Surveyors, in 1971, monumented with an iron post, 2½ ins. diam., firmly set, protruding 2 ins. above ground in a mound of stone, 3 ft. at base and 1 ft. high, with brass cap mkd.

T38S R2E
S2|S1
S11|S12
1971

from which the remains of the original bearing trees:

- A fir, 21 ins. diam., bears N. 53° E., 17 lks. dist., with healed blaze.
- A fir, 25 ins. diam., bears S. 30½° E., 47 lks. dist., (49 lks. on slope), with healed blaze. (Record, S. 31½° E.)
- A fir, 20 ins. diam., bears S. 43° W., 48 lks. dist., with healed blaze. (Record, S. 42° W.)
- A downed fir snag, bears N. 64° W., 32 lks. dist., with visible scribe marks T38 R2E S2.

and bearing tree mkd. by Roseberry and Evans in 1971:

- A fir, 25 ins. diam., bears N. 76° W., 64 lks. dist., with visible scribe marks T38S R2E S2 BT on partly healed blaze.

From the sec. cor. of secs. 11, 12, 13, and 14.

N. 89° 41' 04" W., bet. secs. 11 and 14.
Marking and blazing the true line.

- 2631.49 The ½ sec. cor. of secs. 11 and 14, perpetuated by Lynn M. Roseberry and Larry D. Evans, Cadastral Surveyors, in 1971, monumented with an iron post, 2½ ins. diam., firmly set, flush with the ground, in a mound of stone 4 ft. at base, to top with brass cap mkd.

T38S R2E
½ S 11
S 14
1971

from which the remains of the original bearing trees:

- A yellow pine, 30 ins. diam., bears S. 67° W., 60 lks. dist., with healed blaze. (Unofficial Record, 63 lks.)
- A white oak snag, 4 ins. diam., bears N. 23° W., 60 lks. dist., with visible scribe marks on open double blaze.

and bearing tree mkd. by Roseberry and Evans in 1971:

- A fir, 21 ins. diam., bears N. 21½° W., 87 lks. dist., with visible scribe marks ½ S11 BT on partly healed blaze.

Corner is located on southwest rocky slope.

A fir, 11 ins. diam., bears N. 20½° E., 51 lks. dist.,
with visible scribe marks S12 BT on partly healed blaze.
(Unofficial Record, N. 19° E.)

A fir, 17 ins. diam., bears S. 30½° E., 146 lks. dist.,
with visible scribe marks S13 BT on partly healed blaze.
(Unofficial Record, S. 32° E.)

A fir, 17 ins. diam., bears S. 61° W., 128 lks. dist.,
with visible scribe marks S R2E S14 BT on partly healed blaze.
(Unofficial Record, S. 60° W.)

A fir, 20 ins. diam., bears N. 71½° W., 91 lks. dist.,
with visible scribe marks T38S R2E S11 BT on partly
healed blaze. (Unofficial Record, N. 73° W.)

N. 0° 00' 14" W., bet. secs. 11 and 12, marking and blazing the true line
to the S 1/16 of secs. 11 and 12.

1322.58 Point for the S 1/16 sec. cor. of secs. 11 and 12.

Set an iron rebar, 5/8 in. diam., 24 ins. long, 20 ins. in the ground,
in a mound of stone, 2½ ft. at base, 8 ins. high.

from which:

A fir, 20 ins. diam. bears S. 49½° W., 52.75 ft. dist.

A fir, 14 ins. diam., bears N. 67½° W., 28.05 ft. dist.

From this point, a point established by person(s) unknown, bears N. 72° E.,
4.39 ft. dist., monumented with an iron pipe, 3/4 ins. diam., firmly set,
protruding 10 ins. above ground in a mound of stone, 3 ft. at base to top.

2645.16 The ¼ cor. of secs. 11 and 12, perpetuated by C. Z. Boyden, Deputy County
Surveyor, in 1936, monumented with an iron pipe, 1½ ins. diam., firmly set,
protruding 4 ins. above ground,

from which the remains of the original bearing trees:

A root hole bears S. 41° E., 13 lks. dist. alongside of which
is lying a fir, size indeterminate.

and the remains of a bearing tree mkd. by Boyden in 1936:

A downed cedar, 14 ins. diam., bears N. 63° W., 27.1 ft. dist.,
with visible scribe marks CS BT on opened double blaze.

N. 0° 10' 20" E., beginning new measurement.

1318.22 Point for the N 1/16 sec. cor. of secs. 11 and 12.

Set an iron rebar, 5/8 ins. diam., 24 ins. long, 20 ins. in the ground,

from which:

A fir, 17 ins. diam., bears N. 89 3/4° E., 34.50 ft. dist.

A fir, 10 ins. diam., bears N. 74° W., 30.50 ft. dist.

6930

SURVEY NARRATIVE TO COMPLY WITH ORS 209.250

SURVEY FOR: United States Department of the Interior, Bureau of Land Management, Medford District, 310 West 6th, Medford, Oregon.

Purpose of Survey: Administrative survey to segregate the NE¼ of the NE¼, the S½ of the SE¼ and the S½ of the NW¼ of Section 11, T. 38 S., R. 2 E., Will. Mer., Jackson County, Oregon.

The history of surveys of T. 38 S., R. 2 E., pertaining to this survey is as follows:

In 1881, McCall and Chitwood surveyed the boundaries and the subdivisional lines pertaining to this survey as shown on the official plat of survey approved July 12, 1881. In 1971, Lynn M. Roseberry and Larry D. Evans, Cadastral Surveyors, remonumented certain original corners under special instructions dated May 3, 1957, Group No. 350, unofficial field notes.

Preliminary to the resurvey, the lines of the original survey were retraced, and search was made for all corners and other calls of the record.

The survey was executed in accordance with the specifications as set forth in the Digest of Oregon Land Surveying Laws and the Manual of Surveying Instructions, 1973.

The direction of lines were determined by solar observations on the sun. The instruments used were Wilde TD 16 Theodolite, Hewlett-Packard Model 3805A, and 66 foot steel standard.

NOTE: The bearings are taken to the center of the new bearing tree with an aluminum nail driven into the tree at the base and a blaze. The distance is measured to an aluminum nail in the side.

Dependent Resurvey of a Portion of the
Subdivisional Lines, T. 38 S., R. 2 E.,
Willamette Meridian, Oregon

Beginning at the cor. of secs. 11, 12, 13, and 14, perpetuated by Lynn M. Roseberry and Larry D. Evans, Cadastral Surveyors, in 1971, monumented with an iron post, 2½ ins. diam., firmly set, protruding 2 ins. above ground with brass cap mkd.

T38S R2E
S11|S12
S14|S13
1971

from which the remains of the original 1881 bearing trees:

A sawed fir stump, 42 ins. diam., bears N. 34° E., 97 lks. dist., with rotted blaze with no marks.

A root hole, bears N. 86° W., 54½ lks. dist., alongside of which is lying a fir 26 ins. diam., with visible scribe marks S11 on open double blaze.

and bearing trees mkd. by Roseberry and Evans in 1971: