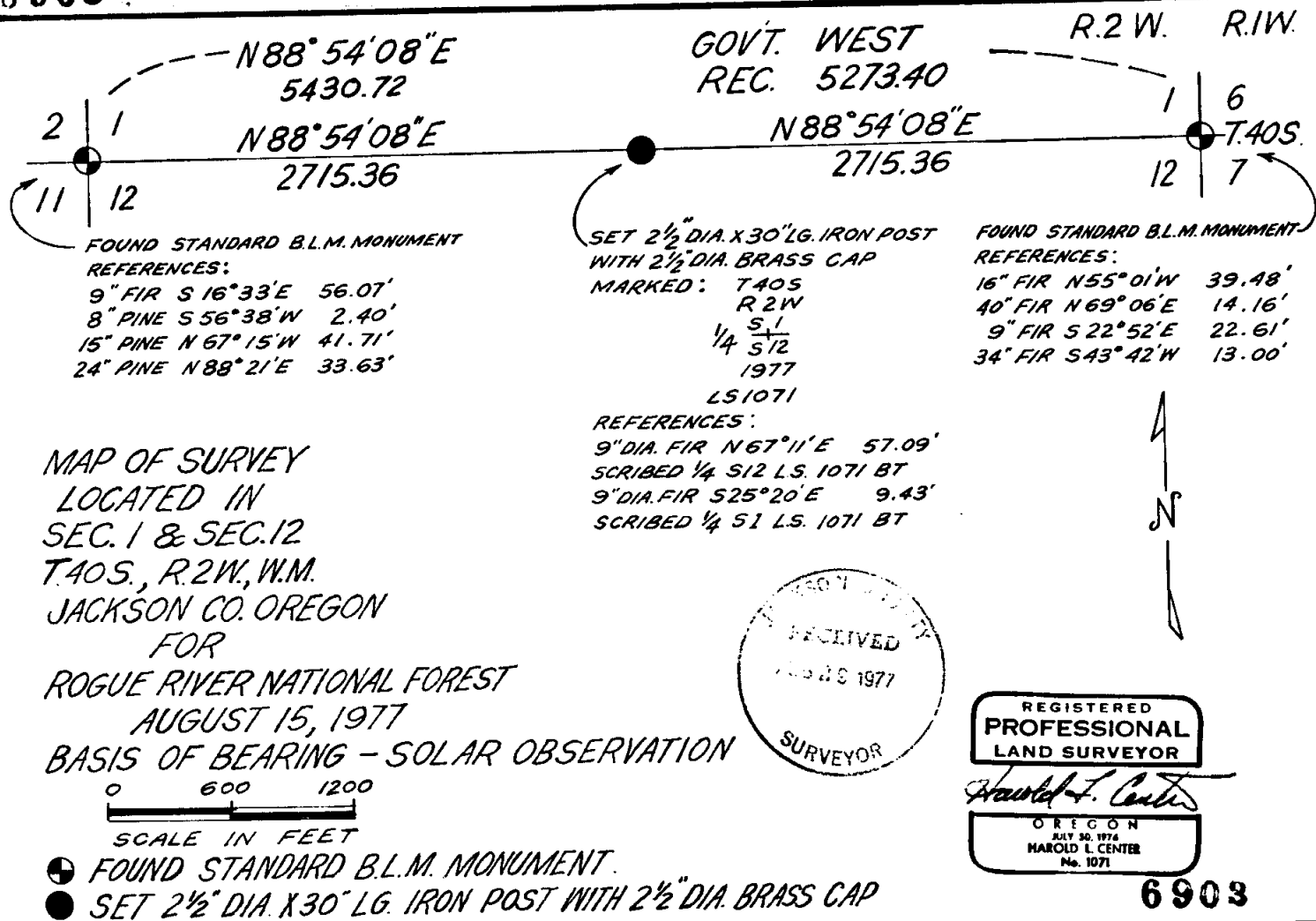


6903



10 SCALE

The corner common to Sections 1, 2, 11 and 12, Township 40 South, Range 2 West, at the corner point, I found a 2½ inch diameter galvanized iron pipe with 3 inch brass cap marked:

U.S. Dept. of Interior
 Unlawful to Disturb
 T40S | R2W
 S2 | S1
 S11 | S12
 1975
 Cadastral Surveys
 Bureau of Land Management

From which the following references:

A 9-inch diameter fir bears S16°33'E 56.07'
 A 8-inch diameter pine bears S56°38'W 2.40'
 A 15-inch diameter pine bears N67°15'W 41.71'
 A 24-inch diameter pine bears N88°21'E 33.63'

Corner established this survey:

One quarter (¼) corner common to Sections 1 and 12, Township 40 South, Range 2 West.

At the proportioned corner location, I set a 2½ inch diameter galvanized iron post with 2½ inch diameter brass cap marked:

T40S
 R2W
 S1
 ¼ —
 S12
 1977
 L.S. 1071

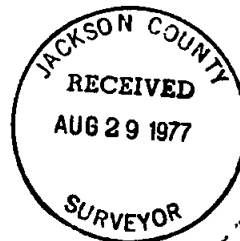
From which the following references:

A 9-inch diameter fir bears N67°11'E 57.09'
 scribed ¼ S12 L.S. 1071 BT
 A 9-inch diameter fir bears S25°20'E 9.43'
 scribed ¼ S1 L.S. 1071 BT

HAROLD CENTER
 Registered Professional Land Surveyor
 Oregon Certificate No. 1071

REGISTERED
 PROFESSIONAL
 LAND SURVEYOR

Harold L. Center
 OREGON
 JULY 30, 1974
 HAROLD L. CENTER
 No. 1071



SURVEY NARRATIVE TO COMPLY WITH
PARAGRAPH 209.250 OREGON REVISED STATUTES

Survey For: Rogue River National Forest
P.O. Box 520
Medford, OR 97501

Location: North Half ($\frac{1}{2}$) Section 12,
and South Half ($\frac{1}{2}$) Section 1,
Township 40 South, Range 2 West,
Willamette Meridian,
Jackson County, Oregon

Basis of Bearing: Solar Observation

Purpose: To monument the one quarter corner common
to Section 1 and Section 12, Township 40 South,
Range 2 West, Willamette Meridian,
Jackson County, Oregon

Procedure: The South line of Section 1, Township 40 South,
Range 2 West, was needed in preparation for the
Mule Post Timber Sale to allow for marking
of timber prior to harvest.

The South one-quarter corner had been searched
for without success. After a thorough search
of the area, I reestablished the corner at
Single Proportion position as shown on the
attached map. In addition, I set metal posts
with National Forest Boundary signs attached
along the true line, blazed and painted
trees along said line.

Corners accepted for control:

The corner common to Sections 1 and 12, Township 40 South, Range 2 West;
and Sections 6 and 7, Township 40 South, Range 2 West.

At the corner point, I found a 2 $\frac{1}{2}$ " diameter galvanized iron pipe
with a 3 inch brass cap marked:

U.S. Dept. of Interior
Unlawful to Disturb

T40S
R2W RIW
S1 | S6
S12 | S7
1975

Cadastral Surveys
Bureau of Land Management

From which the following references:

A 16-inch diameter fir bears N55°01' W 39.48'
A 40-inch diameter fir bears N69°06' E 14.16'
A 9-inch diameter fir bears S22°52' E 22.61'
A 34-inch diameter fir bears S43°42' W 13.00'