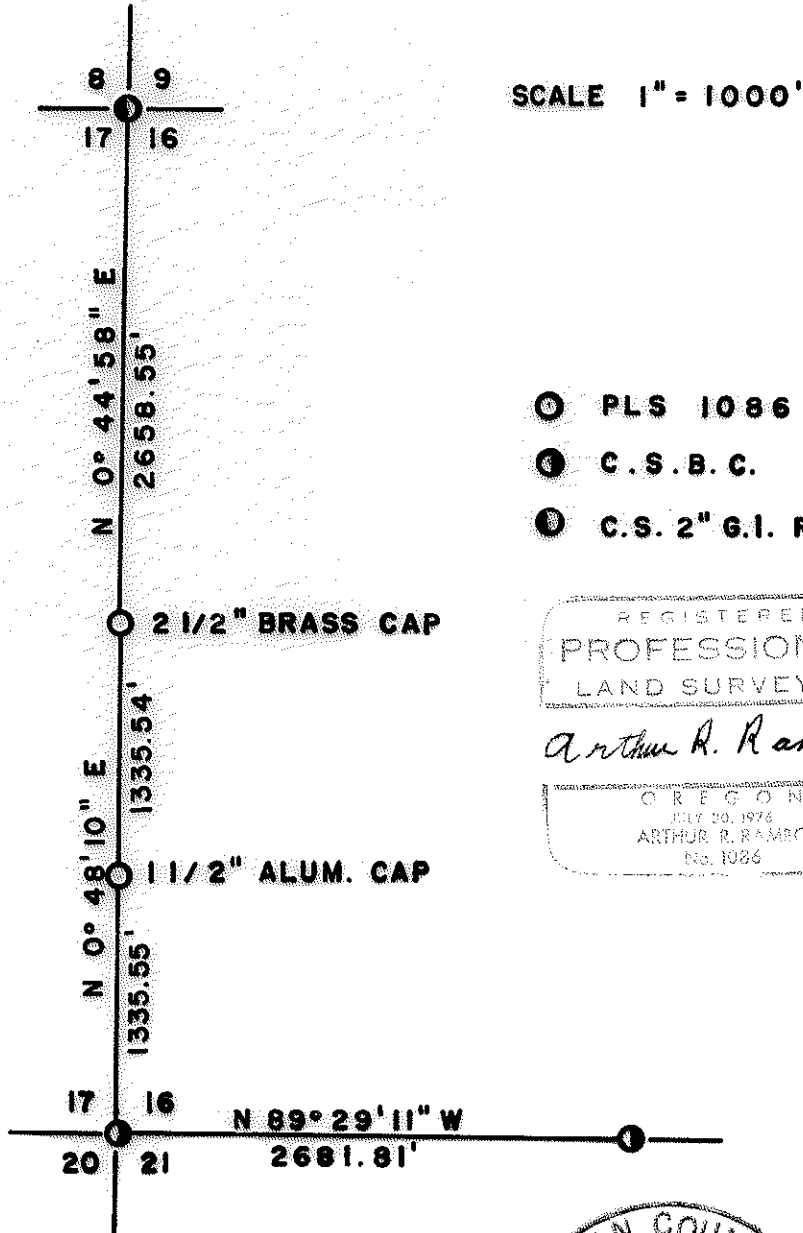


6762

6760

SECTION 16 T35S R3E W.M.  
MARCH 25, 1977

6762

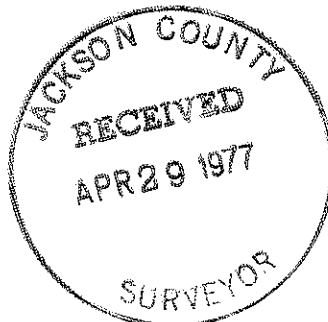


- ① PLS 1086
- ② C.S.B.C.
- ③ C.S. 2" G.I. PIPE

REGISTERED  
PROFESSIONAL  
LAND SURVEYOR

*Arthur R. Rambo*

OREGON  
JULY 30, 1976  
ARTHUR R. RAMBO  
No. 1026



6762

6762

SURVEY NARRATIVE TO COMPLY WITH PARAGRAPH 209.250  
OREGON REVISED STATUTES

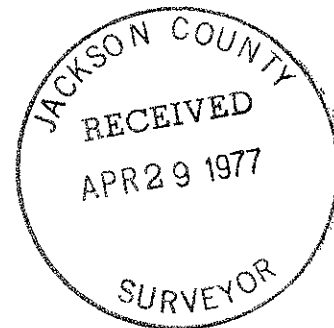
West 1/2 Section 16 Township 35 South Range 3 East W.M.

Survey For: Medford Resources Corporation

Survey By: Arthur R. Rambo PLS 1086

Bearing: From series of solar observations near N.W. corner

Purpose: To monument corners and mark property lines



PROCEDURE

Prior to commencement of field work, research disclosed that the only survey of record in this area was the original government cadastral survey performed by Nathaniel Ford in 1855.

Inspection of county records disclosed that the Jackson County Surveyor had perpetuated the N.W. Corner, the S.W. Corner and the South one quarter Corner of Section 16 on the basis of original evidence.

Research of U.S.F.S. records revealed that a government forester had found a down pine with scribes visible in 1932, near what he assumed to be the approximate location of the West one quarter Corner. However he stated the scribing was not old enough to be original.

A thorough search of this area revealed two stump holes which match original calls.

The stumphole to the N. E. is a rotted out shell of Ponderosa Pine flush with the ground and measuring 18" in diameter. The N.W. stumphole is completely burned out and measures approximately 32" in diameter.

Also found down pine tree, which was mentioned in 1932 U.S.F.S. Corner report, with burned face but no scribes visible at this time. Reconstructing tree as it would have stood, the face points in the direction of the Corner as located from stump holes.

A proportioned measurement for this Corner from the found Section Corners to the North and South falls within seven feet of location as set from stump holes.

Therefore, in consideration of the aforementioned evidence, the stump holes were accepted as original witness objects and the Corner was monumented holding record distance therefrom.

Ran transit and chain closed traverse survey

WEST LINE: Bearing North half S 0°44'58" W

0.00 Ft. NW Corner  
2658.55 Ft. Set W 1/4 Corner from original evidence, 1" x 36" galvanized iron pipe and 2 1/2" Brass Cap stamped:

PLS 1086  
S17 1/4 S16  
T35S R3E

Scribed bearing trees: PLS 1086 BT  
11.1" Douglas Fir S53°01'W 70.2'  
11.9" Douglas Fir S67°13'E 23.0'

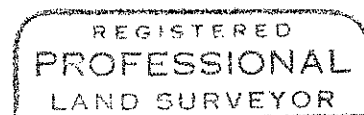
Bearing South half S 0°48'10"W  
3994.09 Ft. Set S 1/16 Corner common to Section 16 and Section 17 by proportionate measurement; Corner falls in North edge of Rancheria Creek, 5/8" x 30" Rebar and 1 1/2" Alum. Cap stamped:

PLS 1086  
S  
S17 1/16 S16  
T35S R3E

Scribed bearing trees: PLS 1086 BT  
18" Douglas Fir S52°24'W 48.22'  
15.5" Douglas Fir N17°21'E 44.05'  
5329.64 Ft. SW Corner

SOUTH LINE: Bearing West half S89°29'11"E

0.00 Ft. SW Corner  
2681.81 Ft. S 1/4 Corner



*Arthur R. Rambo*

