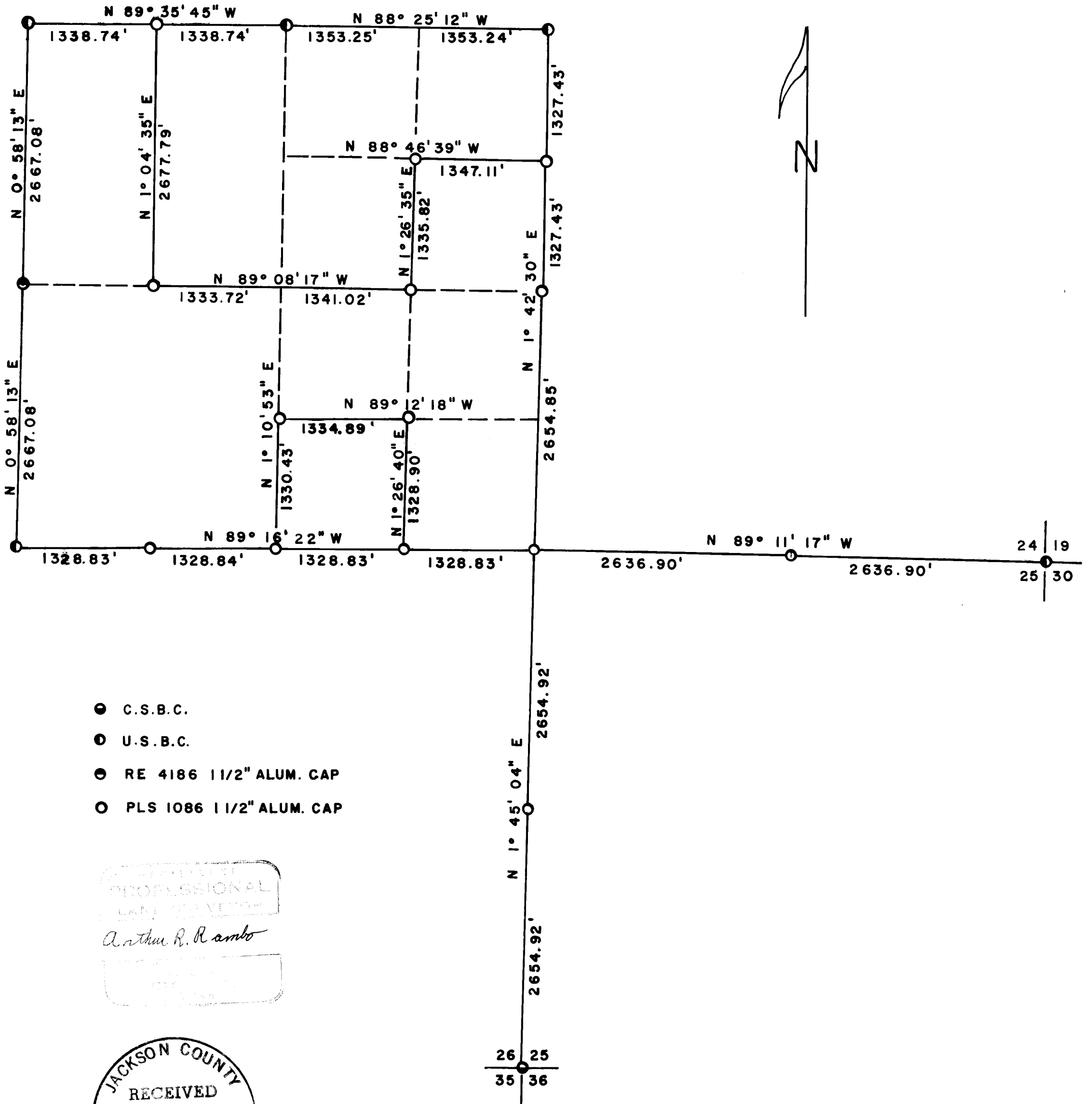


6744

SECTION 23 T35S R3E W.M.

MARCH 1977

SCALE 1" = 1000'



- C.S.B.C.
- U.S.B.C.
- RE 4186 1 1/2" ALUM. CAP
- PLS 1086 1 1/2" ALUM. CAP

ARTHUR R. RAMBO
 PROFESSIONAL
 LAND SURVEYOR

JACKSON COUNTY
 RECEIVED
 APR 20 1977
 SURVEYOR

SECTION 23, TOWNSHIP 35 SOUTH, RANGE 3 EAST
WILLAMETTE MERIDIAN

March, 1977

NARRATIVE:

OBJECT: For Medford Resources Corporation. To monument corners and mark property lines.

Found following evidence:

- NW Corner U.S. Brass Cap and BT's set from original evidence
- N $\frac{1}{4}$ Corner U.S. Brass Cap and BT's set from original evidence
- NE Corner U.S. Brass Cap and BT's set from original evidence
- E $\frac{1}{4}$ Corner No evidence found, 6 man days searching
- SE Corner No evidence found, 6 man days searching
- S $\frac{1}{4}$ Corner Found 3/4" G.I. pipe, no BT's; investigation proved pipe to be unofficial. Pipe set by Charles R. Lewis (land owner). As approximate N.E. property corner, pipe falls 6.02 feet South and 5.49 feet West of proportioned corner. No further evidence found, 6 man days searching.
- SW Corner U.S. Brass Cap and BT's set from original evidence
- W $\frac{1}{4}$ Corner RE4186 Alum. Cap and BT's set by proportion
- $\frac{1}{4}$ Corner common to Sec. 24 and Sec. 25 not found, 4 man days spent searching
- Section Corner common to Sec. 24 and Sec. 25 T35SR3E and Sec. 19 and Sec. 30 T35SR4E U.S. Brass Cap and BT's set from original evidence.
- Section Corner common to Sec. 25 and Sec. 26 and Sec. 35 and Sec. 36 T35SR3E C.S. Brass Cap and BT's set from original evidence

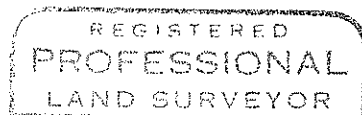
Ran transit and chain survey closing on recorded Survey No. 5989
Basis of Bearing recorded Survey No. 5989

NORTH LINE: Bearing West half S 89 $^{\circ}$ 35'45" E
0.00 ft. NW Corner
1338.74 ft. Set W 1/16 corner common to Sec. 14 and Sec. 23 by proportionate measurement, 5/8" x 30" rebar with Alum. Cap stamped: PLS 1086

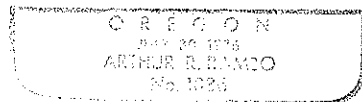
S14
W 1/16
S23
T35S R3E

Scribed bearing trees: PLS 1086 BT
11" Yellow Pine N 20 $^{\circ}$ 21'30" E 10.1'
13" Yellow Pine S 11 $^{\circ}$ 19'30" W 12.6'

2677.48 ft. N $\frac{1}{4}$ Corner
Bearing East half S 88 $^{\circ}$ 25'12" E
0.00 ft. N $\frac{1}{4}$ Corner
2706.49 ft. NE Corner



Arthur R. Rambo



EAST LINE: Bearing S 1 $^{\circ}$ 42'30" W
0.00 ft. NE Corner
1327.43 ft. Set N 1/16 Corner common to Sec. 23 and Sec. 24 by proportionate measurement, 5/8" x 30" rebar with Alum. Cap stamped: PLS 1086

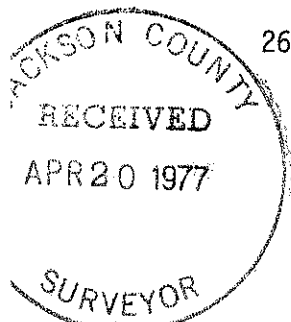
N
S23 1/16 S24
T35 S R3E

Scribed bearing trees: PLS 1086 BT
8.4" White Fir N 32 $^{\circ}$ 42' E 14.1'
10.5" Douglas Fir N 70 $^{\circ}$ 30' W 72.1'

2654.86 ft. Set E $\frac{1}{4}$ Corner by proportionate measurement, 5/8" x 30" rebar with Alum. Cap stamped: PLS 1086

S23 $\frac{1}{4}$ S 24
T35S R3E

Scribed bearing trees: PLS 1086 BT
13.5" Douglas Fir N 51 $^{\circ}$ 08' E 18.0'
9 " Douglas Fir S 77 $^{\circ}$ 35' W 11.3'



NARRATIVE: SECTION 23, TOWNSHIP 35 SOUTH, RANGE 3 EAST WILLAMETTE MERIDIAN (CONT'D)

5309.71 ft. Set SE Corner by double proportionate measurement, 5/8" x 30" rebar with Alum. Cap stamped: PLS 1086
23 24
26 25
T35S R3E

Scribed bearing trees: PLS 1086 BT
14.4" Yellow Pine N 82°42' E 69.8'
12.2" Douglas Fir S 48°36' E 91.05'
9.6" Yellow Pine S 28°50' W 39.5'
9.4" Douglas Fir N 63°47' W 34.45'

SOUTH LINE: Bearing N 89°16'22" W

0.00 ft. SE Corner
1328.83 ft. Set E 1/16 corner common to Sec. 23 and Sec. 26 by proportionate measurement, 5/8" x 30" rebar with Alum. Cap stamped: PLS 1086
S23
E 1/16
S26
T35S R3E

Scribed bearing trees: PLS 1086 BT
11.8" Douglas Fir N 46°59' E 6.6'
11.7" Douglas Fir N 60°58' W 16.9'

2657.66 ft. Set S 1/4 Corner by proportionate measurement, 5/8" x 30" rebar with Alum. cap stamped: PLS 1086
S23
1/4
S26
T35S R3E

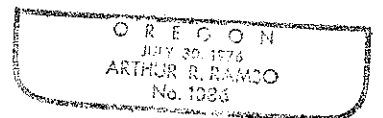
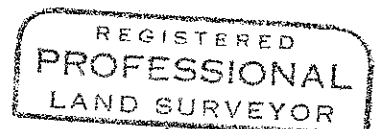
Scribed bearing trees: PLS 1086 BT
7.4" Douglas Fir N 68°11' E 38.65'
8.3" White Fir S 85°11' W 19.15'

3986.50 ft. Set W 1/16 Corner common to Sec. 23 and Sec. 26 by proportionate measurement, 5/8" x 30" rebar with Alum. cap stamped: PLS 1086
S23
W 1/16
S26
T35S R3E

Scribed bearing trees: PLS 1086 BT
11.5" Douglas Fir N 44°47' E 23.4'
13" Douglas Fir S 40°14' W 16.8'

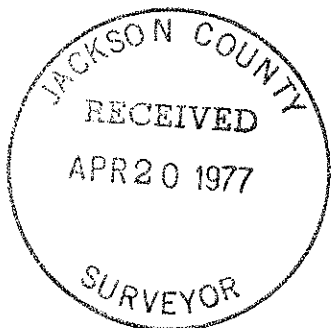
5315.33 ft. SW Corner

WEST LINE: Bearing South half N 0°58'13" E
0.00 ft. SW Corner
2667.08 ft. W 1/4 Corner
Bearing North Half N 0°58'13" E
0.00 ft. W 1/4 Corner
2667.08 ft. NW Corner



INTERIOR LINES: Ran from W 1/16 Corner common to Sec. 14 and Sec. 23, Township 35 South, Range 3 East:
S 1°04'35" W 2677.79 feet to set CW 1/16 Corner Section 23, 5/8" x 30" rebar with Alum. cap stamped: PLS 1086
S23
CW 1/16
T35S R3E

Scribed bearing trees: PLS 1086 BT
10" White Fir N 30°05' W 1.60'
9.5" White Fir S 4°47' E 10.0'
Thence run S 89°08'17" E 2674.74 feet to set CE 1/16 Corner Section 23, unable to set rebar and cap; thus, chisled a 2" cross (X) on top surface of a stone measuring 1.3 feet by 1.0 feet; stone flush with ground.



6744

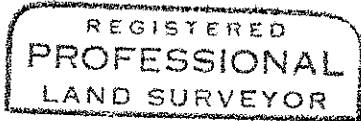
NARRATIVE: SECTION 23, TOWNSHIP 35 SOUTH, RANGE 3 EAST WILLAMETTE MERIDIAN (CONT'D)

Scribed bearing trees: PLS 1086 BT
11.2" Douglas Fir N 24°50'E 29.6'
11.0" Douglas Fir S 40°41' W 26.1'
Thence run N 1°26'35" E 1335.82 feet to set NE 1/16 Corner
section 23, 5/8" x 30" rebar with Alum. Cap stamped: PLS 1086
S23
NE 1/16
T35S R3E

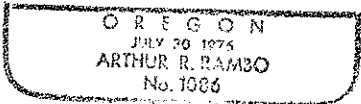
Scribed bearing trees: PLS 1086 BT
13" Douglas Fir S 58°25' E 63.2'
12.2" White Fir N 6°03' W 23.1'
Thence run S 88°46'39" E 1347.11 feet and closed to N 1/16
Corner common to Sec. 23 and Sec. 24.
Ran from E 1/16 Corner common to Sec. 23 and Sec. 26 N 1°26' 40" E
1328.90 feet to set SE 1/16 Corner Section 23, 5/8"x 30" rebar
with Alum. Cap stamped: PLS 1086
S 23
SE 1/16
T35S R3E



Scribed bearing trees: PLS 1086 BT
14.2" Douglas Fir S 24°10' E 40.55'
8.1" Douglas Fir N 71°43' W 40.50'
Thence run N 89°12'18" W 1334.89 feet to set CS 1/16 Corner
Section 23, 5/8" x 30" rebar with Alum. Cap stamped: PLS 1086
S23
CS 1/16
T35S R3E



Arthur R. Rambo



Scribed bearing trees: PLS 1086 BT
16.2" Douglas Fir N 52°09' E 50.95'
6" White Fir S 31°53' W 6.13'
Thence run S 1°10'53" W 1330.43 feet and closed to S 1/4 Corner
Section 23.

S. E. Corner of Section 23 T35S R3E is lost, therefore ran a closed traverse
survey to tie in the nearest corner to the South and East for a double
proportionate measurement.

Ran S 1°45'04" W 2654.92' to set 1/4 Corner common to Sections 26 and 25
by proportionate measurement, 5/8" x 30" rebar and Alum. Cap stamped: PLS 1086
S26 1/4 S25
T35S R3E

Scribed bearing trees: PLS 1086 BT
32.2" Yellow Pine S 36°07' W 293.4'
17.3" Cedar S 14°35' E 273.2'
Thence ran S 1°45'04" W 2654.92 feet to tie in S.E. Corner
Section 26.

Ran S 89°11'17" E 2636.90' to set 1/4 Corner common to Sections 24 and 25 by
proportionate measurement, 5/8" x 30" rebar and Alum. Cap stamped: PLS 1086
S24
1/4
S25
T35S R3E

Scribed bearing trees: PLS 1086 BT
14.5" Yellow Pine S 30°52' W 19.0'
14.5" Douglas Fir N 1°46' W 21.4'

Ran S 89°11'17" E 2636.90 feet to tie in the S.E. Corner Section 24.