

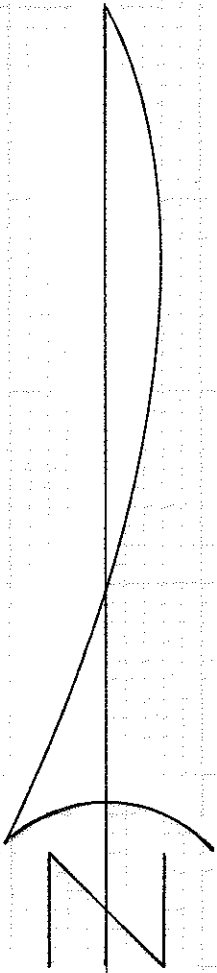
6732

6732

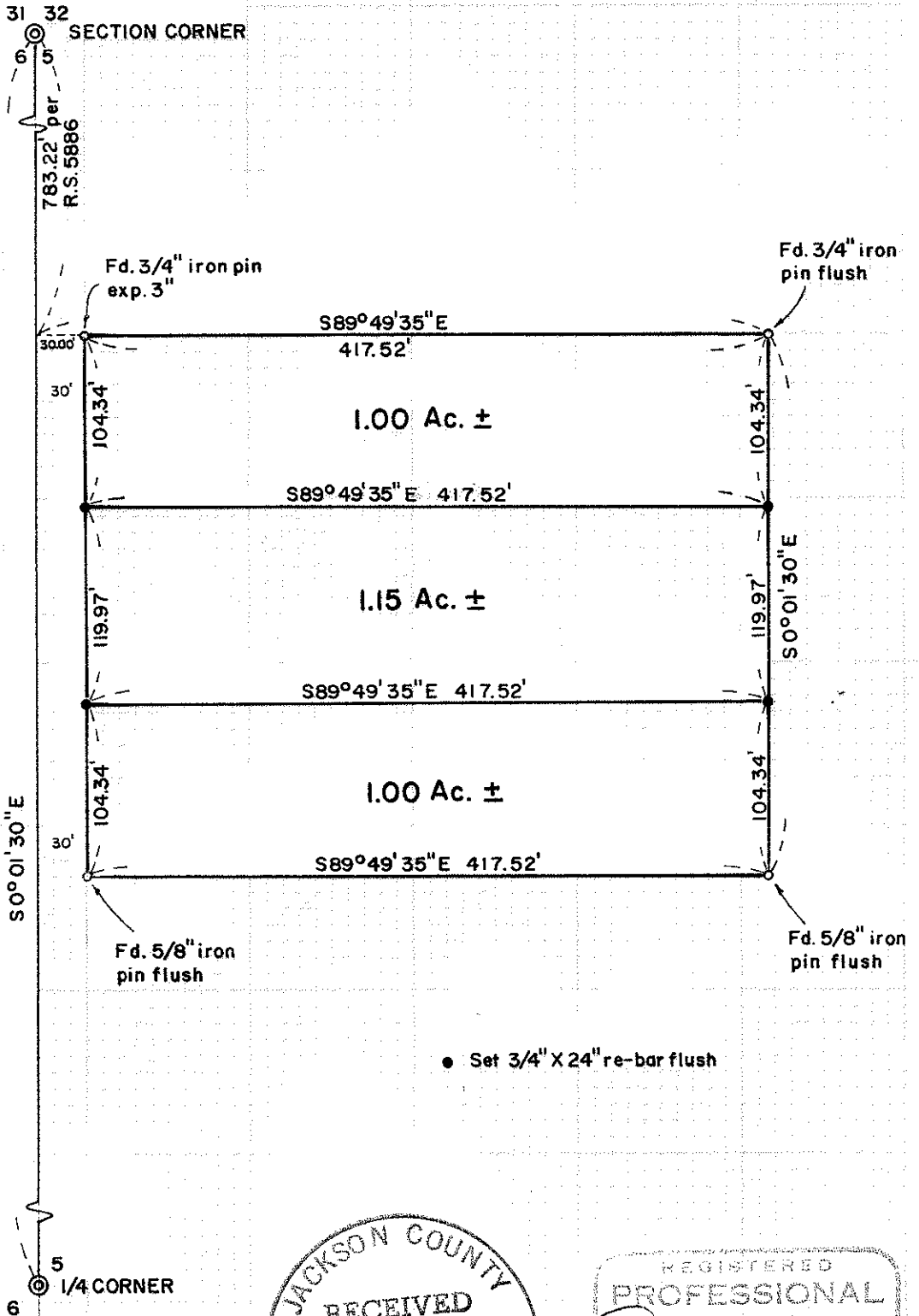
SURVEY FOR CAL-ORE EROSION

LOCATED IN THE NW 1/4 OF
SECTION 5, T37S, RIW, W. M.

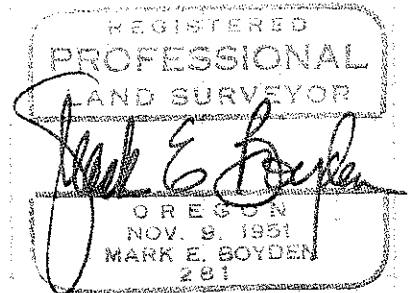
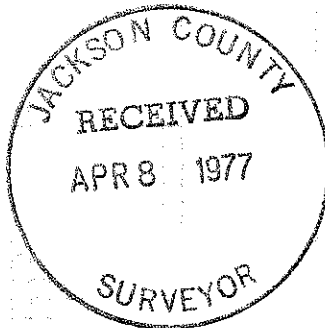
BY: MARK E. BOYDEN
MAR. 21, 1977



BASIS OF BEARINGS:
RECORDED SURVEY
NO. 5886



● Set 3/4" X 24" re-bar flush



6732

6732

Survey No. 6782

SURVEY NARRATIVE TO COMPLY WITH O.R.S. 209.250

FOR: Cal-Ore Erosion
4778 Crater Lake Highway
Medford, Oregon, 97501

PURPOSE: To monument and describe in three tracts, the property previously monumented on Recorded Survey No. 5886, being located in the NW 1/4 of Section 5, T37SR1W, W.M.

PROCEDURE: From the monuments found as set on Recorded Survey Nos. 3017 and 5886, monumented the additional corners at positions as shown on the annexed map.

March 21, 1977

