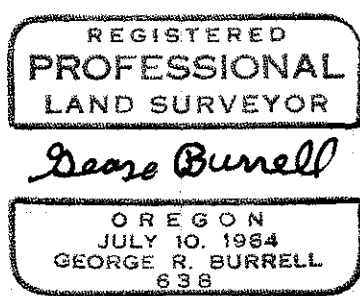
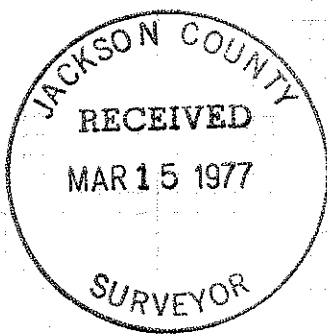
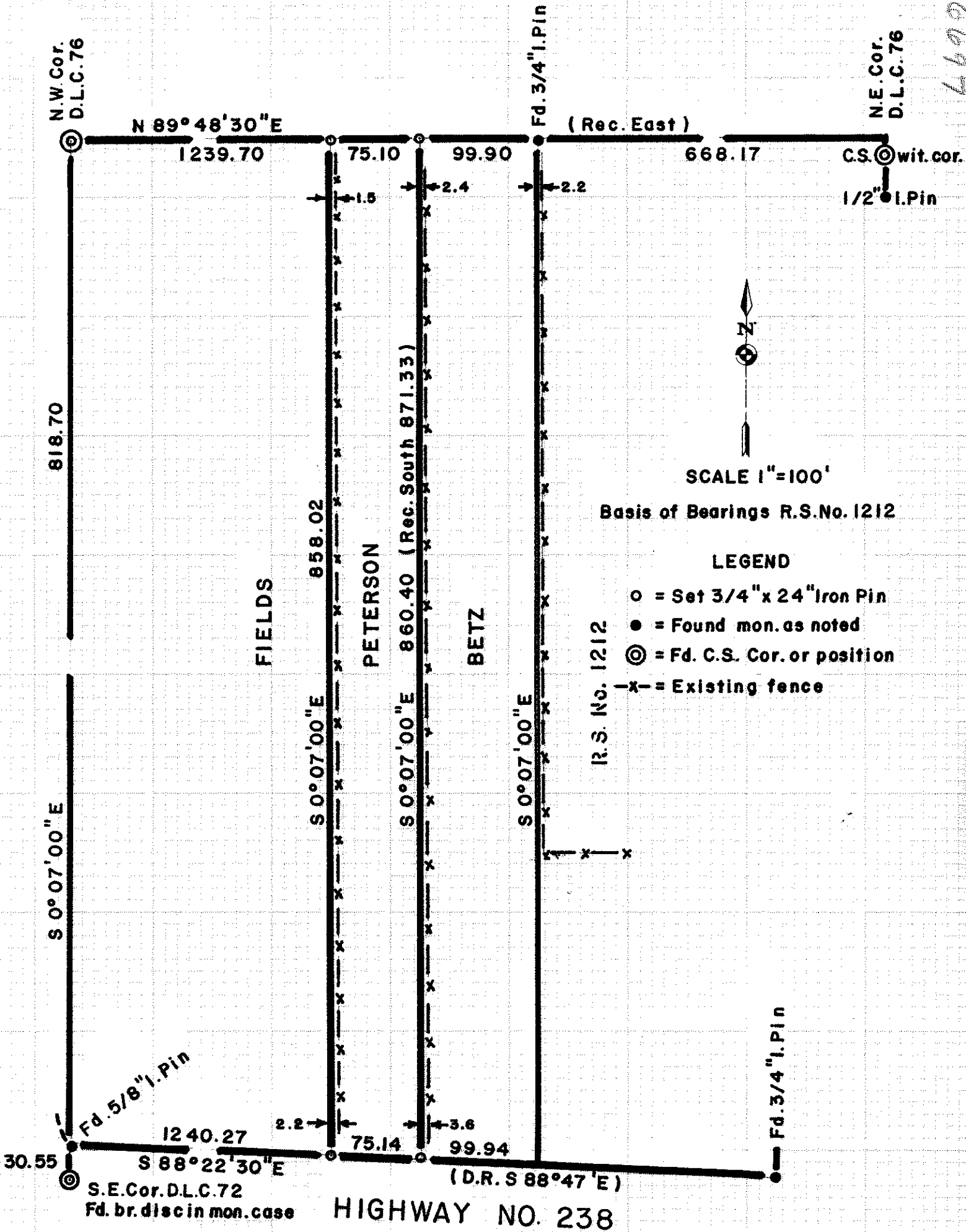


6697

4699



MAP OF SURVEY
 Located in N.1/2 Sec.26,T37S,R2W
 For: EMIL PETERSON
 By: Geo. Burrell, Surveyor 3/1/77

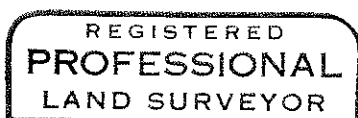
SURVEY NO. 6697

SURVEY NARRATIVE TO COMPLY WITH O.R.S. 209.250

FOR: Emil Peterson
2574 Jacksonville Hwy.
Medford, Oregon

PURPOSE: To monument the Peterson ownership for the benefit of
a new owner.

PROCEDURE: The N.W. corner of D.L.C. No. 76 has been destroyed along with all the witness monuments. Also, the monuments set by recorded survey no. 3479 in the immediate vicinity have been destroyed or disturbed. I reestablished the position for this corner for purposes of my survey by holding record angle and distance at the found 5/8" iron pin at the intersection of the West D.L.C. line and the Northerly Highway right of way according to recorded survey no. 1212. Said D.L.C. cor. position falls on a conc. irrig. headgate. The N.E. corner of D.L.C. No. 76 was established from the C.S. witness corner as follows: from the C.S. brass capped witness corner the True corner bears North 0° 19' 26" West 9.91 feet and a 1/2" iron pin bears South 0° 06' 22" West 40.00 feet. From these corner positions thus established the clients corners along said D.L.C. line were established according to deed record. The East and West boundaries were established parallel to the West line of D.L.C. No. 76. This procedure seems to best conform to deed record South as ascertained from an inspection of Herman Powell's field notes and plat of D.D. DUFF TRACTS in the possession of Mark Boyden. A description was furnished the client for the West line of the property as surveyed for quit claim purposes with the adjoiner to remove any future uncertainty of location. The East line of the property as surveyed is in a state of negotiation with the adjoiner for possible quit claim purposes.



George R. Burrell

