

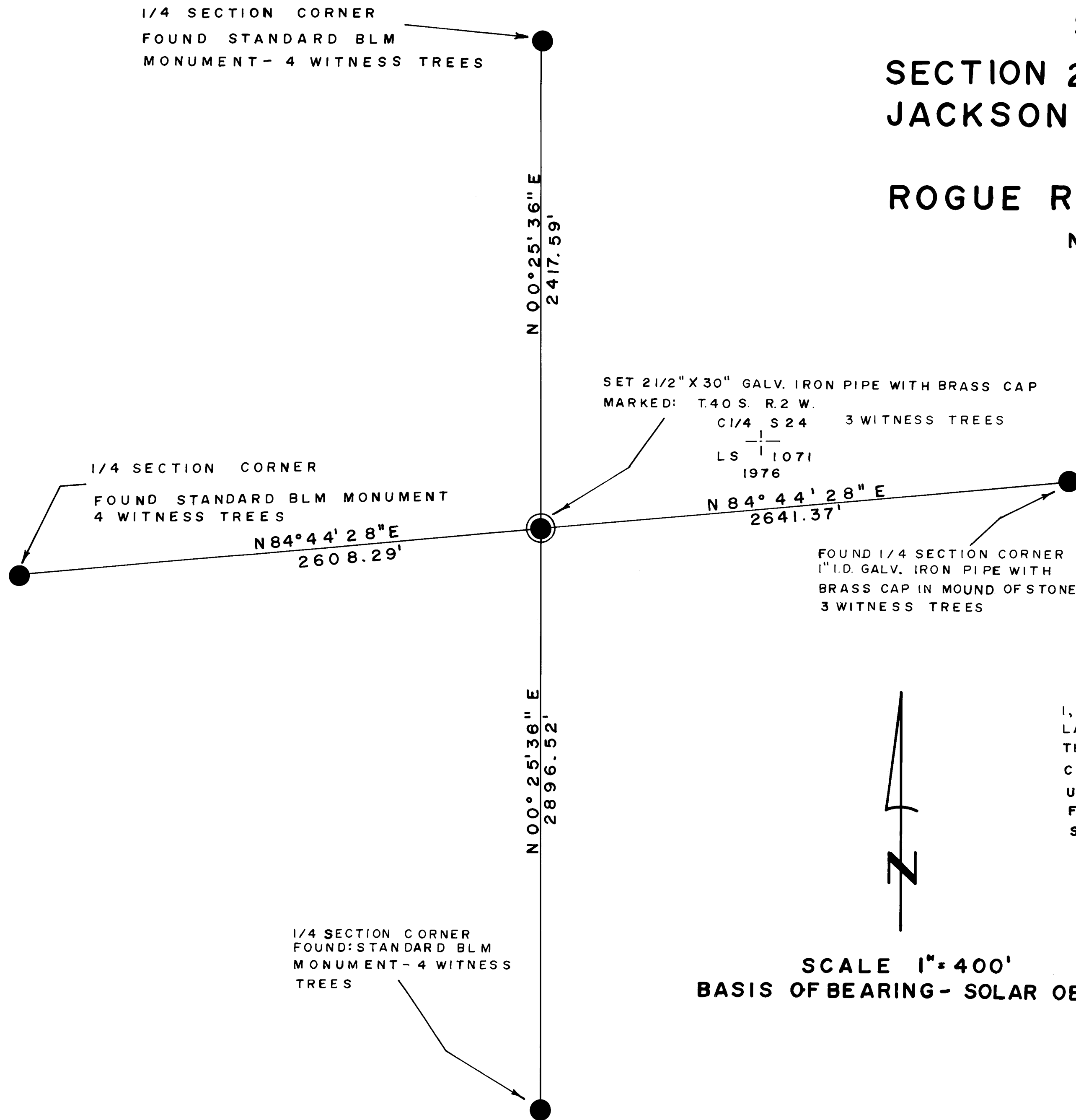
6551

SURVEY NO. 6551

SURVEY IN
 SECTION 24, T. 40 S., R. 2 W. W. M.
 JACKSON COUNTY OREGON
 FOR
 ROGUE RIVER NATIONAL FOREST
 NOVEMBER 23, 1976

LEGEND

- FOUND GALV. IRON PIPE MONUMENT
- ⊙ SET GALV. IRON PIPE MONUMENT



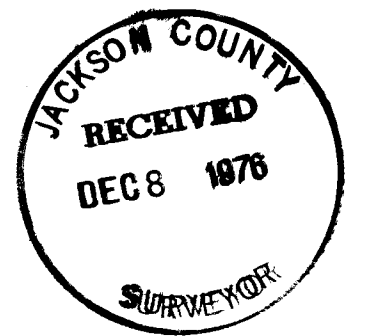
SET 2 1/2" X 30" GALV. IRON PIPE WITH BRASS CAP
 MARKED: T. 40 S. R. 2 W.
 C 1/4 S 24 3 WITNESS TREES
 LS 1071
 1976

I, HAROLD L. CENTER, DULY REGISTERED AND SWORN PROFESSIONAL LAND SURVEYOR IN THE STATE OF OREGON, DO HEREBY CERTIFY THAT THIS PLAT AND THE NOTES THEREON, OR ATTACHED TO, ARE A CORRECT REPRESENTATION OF A SURVEY PERFORMED BY ME OR UNDER MY DIRECTION DURING NOVEMBER 1976 FOR THE U. S. FOREST SERVICE IN ACCORDANCE WITH THE LAWS OF THE STATE OF OREGON.



SCALE 1" = 400'
 BASIS OF BEARING - SOLAR OBSERVATION

REGISTERED
 PROFESSIONAL
 LAND SURVEYOR
Harold L. Center
 OREGON
 JULY 30, 1974
 HAROLD L. CENTER
 No. 1071



6551

SURVEY NO. 6551

AFFIDAVIT

I, Tom Newcomb, employee of the United States Forest Service, do solemnly swear that while conducting Government Section Corner Search and Evaluation for my employer, I did visit the North, East, South and West Quarter Corners to Section 24, Township 40 South, Range 2 West of the Willamette Meridian, and did find what I believed to be the original bearing trees in evidence at the time of my visit. Subsequently the corners were remonumented by the Bureau of Land Management and Jackson County Surveyor's office from the evidence found and evaluated by them.

Tom Newcomb
TOM NEWCOMB

State of Oregon)
)
County of Jackson)

Personally appeared before me the above-named Tom Newcomb, and acknowledged the above statement to be his voluntary act.

JoAnn Dodge
JOANN DODGE
NOTARY PUBLIC — OREGON
My Commission Expires 2-11-77

JoAnn Dodge
Notary Public for Oregon
My commission expires 2-11-77

REGISTERED
PROFESSIONAL
LAND SURVEYOR

Harold L. Center
OREGON
JULY 30, 1976
HAROLD L. CENTER
No. 1071

JACKSON COUNTY
RECEIVED
DEC 8 1976
SURVEYOR

From which:

- A fir 12 inches in diameter bears S 31° 34' E, 39.35 feet distance.
- A fir 8 inches in diameter bears S 12° 55' W, 33.34 feet distance.
- A fir 18 inches in diameter bears N 31° 20' W, 10.90 feet distance.
- A fir snag 15 inches in diameter bears S 84° 00' E, 11.05 feet distance.

The following corner used as control for this survey was remonumented by the Jackson County Surveyor on October 15, 1973.

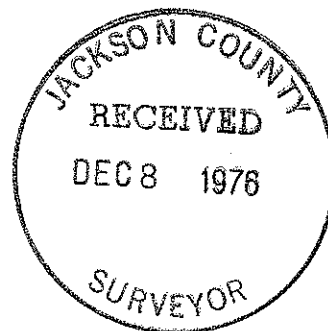
At the corner point I found a 1 inch diameter galvanized iron pipe with a 2 1/2 inch bronze disc marked:

T40S
1/4 S
24 | 19
CS
1973

From which:

- A fir 16 inches in diameter bears S 02° 13' E, 44.92 feet distance, healed scars.
- A fir 32 inches in diameter bears S 04° 34' W, 59.47 feet distance, healed scar.
- A fir 12 inches in diameter bears S 54° 45' W, 17.88 feet distance, scribe visible, CS at upper blaze, BT at lower blaze.

HAROLD L. CENTER
Professional Land Surveyor



From which:

A fir 20 inches in diameter bears N 82° 09' E, 31.20 feet distance, scribe visible.

A fir 20 inches in diameter bears S 24° 08' W, 38.13 feet distance, scribe visible.

A maple 10 inches in diameter bears S 33° 43' W, 11.30 feet distance, healed scar.

A fir snag 36 inches in diameter bears N 23° 25' W, 28.15 feet distance, healed scar.

South Quarter Corner Section 24, Township 40 South, Range 2 West, Willamette Meridian

At the corner point I found a 2 1/2 inch diameter galvanized iron pipe with 3 inch diameter bronze cap marked:

U. S. Dept. of Interior
Unlawful To Disturb

T40S R2W

1/4 $\frac{S24}{S25}$

1975

Cadastral Survey
Bureau of Land Management

From which:

A fir 8 inches in diameter bears N 26° 09' E, 12.20 feet distance, scribe visible.

A pine snag 26 inches in diameter bears N 46° 25' E, 27.00 feet distance, scribe visible.

A fir 6 inches in diameter bears S 24° 24' E, 10.40 feet distance, scribe visible.

A dead and down snag bears S 07° 07' E, 19.90 feet distance, scribe visible.

West Quarter Corner Section 24, Township 40 South, Range 2 West, Willamette Meridian

At the corner point, I found a 2 1/2 inch diameter galvanized iron pipe with 3 inch diameter bronze cap marked:

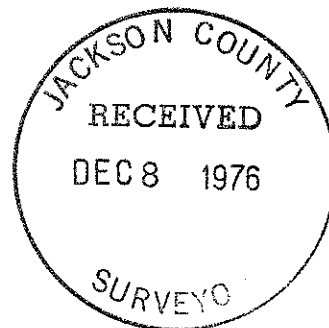
U. S. Dept. of Interior
Unlawful To Disturb

T40S, R2W

1/4
S23 | S24

1975

Cadastral Survey
Bureau of Land Management



SURVEY NARRATIVE TO COMPLY WITH
PARAGRAPH 209.250 OREGON REVISED STATUTES

SURVEY FOR: Rogue River National Forest
(Applegate Ranger District)
P. O. Box 520
Medford, Oregon 97501

LOCATION: Situated in Section 24, Township 40 South, Range 2 West
of the Willamette Base and Meridian, Jackson County, Oregon.

BASE OF BEARING: Solar observation

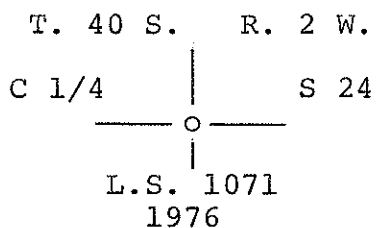
PROCEDURE: The North, East, South and West Quarter Corners for Section 24
were located and a random line traverse was run connecting the four identi-
fied corners. From traverse data the position of the Center Quarter was
computed and established. Lines connecting the Center Quarter and the
North and the East Quarter corners were marked by setting fence posts with
National Forest boundary signs attached, and blazing the line per Bureau of
Land Management Manual instructions.

Survey was performed using Wild T-16 and T-1A Theodolites and Hewlett-
Packard 3800 Electronic Distance Meters.

CORNER AS ESTABLISHED BY THIS SURVEY:

Center Corner Section 24, Township 40 South, Range 2 West, Willamette
Meridian.

At the computed corner location, I set a 2 1/2 inch x 30 inch galvanized
iron pipe 20 inches in the ground, with a 2 1/2 inch bronze cap marked:



From which:

A fir 10 inches in diameter bears N 74° 21' E, 19.60 feet distance,
scribed C 1/4 S24 LS 1071 BT

A fir 20 inches in diameter bears S 51° 28' E, 43.50 feet distance,
scribed C 1/4 S24 LS 1071 BT

A fir 10 inches in diameter bears S 36° 18' W, 11.80 feet distance,
scribed C 1/4 S24 LS 1071 BT

The following corners used as control for this survey have been remonumented
by the Bureau of Land Management; but as of this date, have not been
officially approved.

North Quarter Corner Section 24, Township 40 South, Range 2 West,
Willamette Meridian

At the corner point, I found a 2 1/2 inch diameter galvanized iron pipe
with 3 inch diameter bronze cap marked:

U. S. Dept. of Interior
Unlawful To Disturb
T. 40 S R 2 W

1/4 $\frac{S13}{S24}$

1975
Cadastral Survey
Bureau of Land Management

