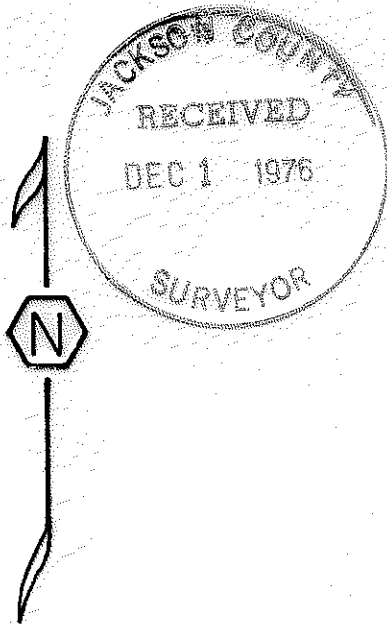
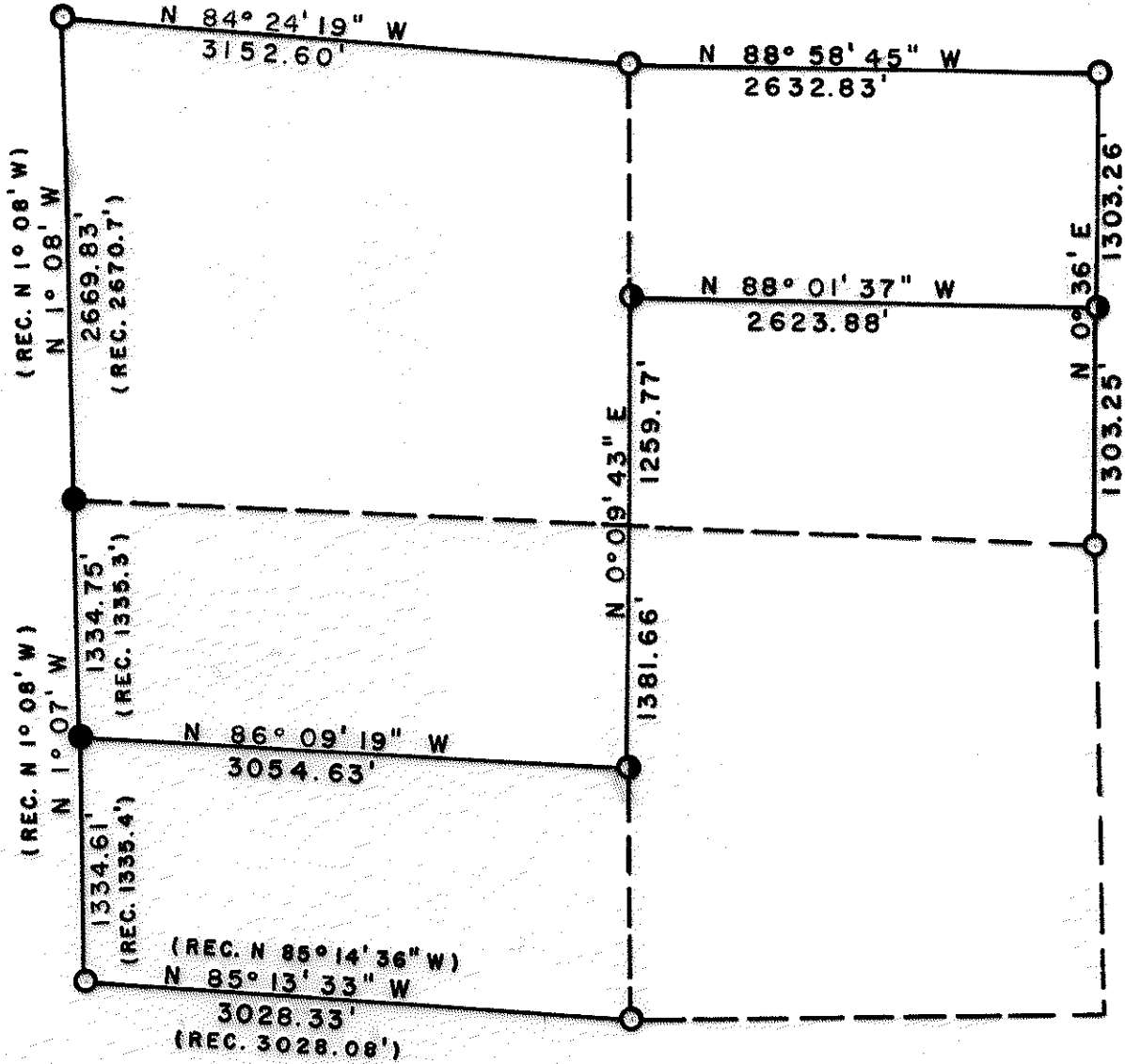


SECTION 8 T34S R2E W.M.  
OCT. 17, 1976



- U.S.B.C.
- RS 461
- LS 1086

REGISTERED  
PROFESSIONAL  
LAND SURVEYOR

*Arthur R. Rambo*

OREGON  
JULY 30 1976  
ARTHUR R. RAMBO  
No. 1086

SCALE 1" = 1000'

NARRATIVE: SECTION 8, TOWNSHIP 34 SOUTH, RANGE 2 EAST, WILLAMETTE MERIDIAN (CONTINUED)

Thence, run S 0°09'43" W 2641.43 feet to CS1/16 Corner  
Sec. 8. Set 5/8"x30" rebar with Alum. Cap stamped:

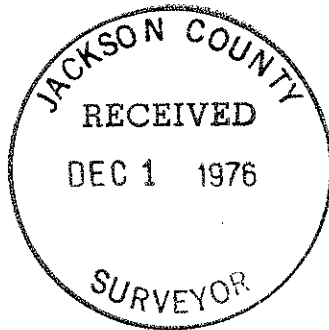
LS1086  
CS  
1/16 S8  
T34SR2E

Scribed CS1/16 S8 BT

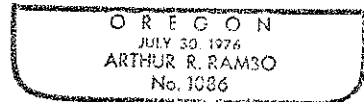
7" Douglas Fir S13½°E 22.4 ft.

9" Douglas Fir N30½°E 15.7 ft.

Thence, run N 86°09'19" W 3054.63 feet to S1/16 Corner  
common to S7 and S8, Township 34 South, Range 2 East,  
Willamette Meridian.



*Arthur Roy Rambo*



SECTION 8, TOWNSHIP 34 SOUTH, RANGE 2 EAST  
WILLAMETTE MERIDIAN

NARRATIVE:

OBJECT: For Medford Resources Corporation. To monument corners and mark property lines.

Found following evidence:

- NW Corner U.S. Brass Cap and BT's set from original evidence.
- N $\frac{1}{2}$  Corner U.S. Brass Cap and BT's set from original evidence.
- NE Corner U.S. Brass Cap and BT's set from original evidence.
- E $\frac{1}{4}$  Corner U.S. Brass Cap and BT's set from original evidence.
- S $\frac{1}{4}$  Corner U.S. Brass Cap and BT's set from original evidence.
- SW Corner U.S. Brass Cap and BT's set from original evidence.
- S1/16 Corner Common to S. 7 and S. 8 5/8"x30" rebar and BT's.
- W $\frac{1}{4}$  Corner RS 461 Alum. Cap and BT's.

Ran transit and chain closed traverse survey. (Bearings from recorded survey #4766.)

NORTH LINE: Bearing West half S 84<sup>0</sup>24'19" E  
0.00 ft. NW Corner  
3152.60 ft. N $\frac{1}{2}$  Corner

Bearing East half S 88<sup>0</sup>58'45" E  
0.00 ft. N $\frac{1}{2}$  Corner  
2632.83 ft. NE Corner

EAST LINE: Bearing North half S 0<sup>0</sup>36' W  
0.00 ft. NE Corner  
1303.26 ft. Set N1/16 Corner common to S. 8 and S. 9 by proportionate measurement, 5/8"x30" rebar with Alum. Cap stamped:

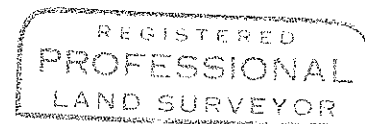
Scribed N1/16 S8 BT  
9" Hemlock S76<sup>0</sup>W 66.39 ft.  
Scribed N1/16 S9 BT  
4" Yellow Pine N78<sup>0</sup>E 31.06 ft.

LS1086  
N  
S8  $\frac{1}{16}$  S9  
T34SR2E

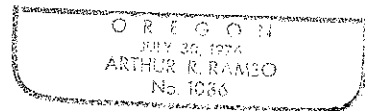
2606.51 ft. E $\frac{1}{4}$  Corner

SOUTH LINE: Bearing West half N 85<sup>0</sup>13'33" W  
0.00 ft. S $\frac{1}{4}$  Corner  
3028.33 ft. SW Corner

WEST LINE: Bearing South half N 1<sup>0</sup>07' W  
0.00 ft. SW Corner  
1334.61 ft. S 1/16 Corner between S. 7 and S. 8  
2669.36 ft. W $\frac{1}{4}$  Corner  
5339.19 ft. NW Corner



*Arthur Roy Rambo*



INTERIOR LINES: Ran from N1/16 Corner common to Sec. 8 and Sec. 9, Township 34 South, Range 2 East.

N88<sup>0</sup>01'37"W 2623.88 feet Set CN1/16 Corner Sec. 8  
5/8"x30" rebar with Alum. Cap stamped:

Scribed CN1/16 S8 BT  
14" White Fir N5 $\frac{1}{2}$ <sup>0</sup>W 46.7 ft.  
11" Yew Wood N68<sup>0</sup>W 72.7 ft.

LS1086  
CN  
 $\frac{1}{16}$   
S8T34SR2E

