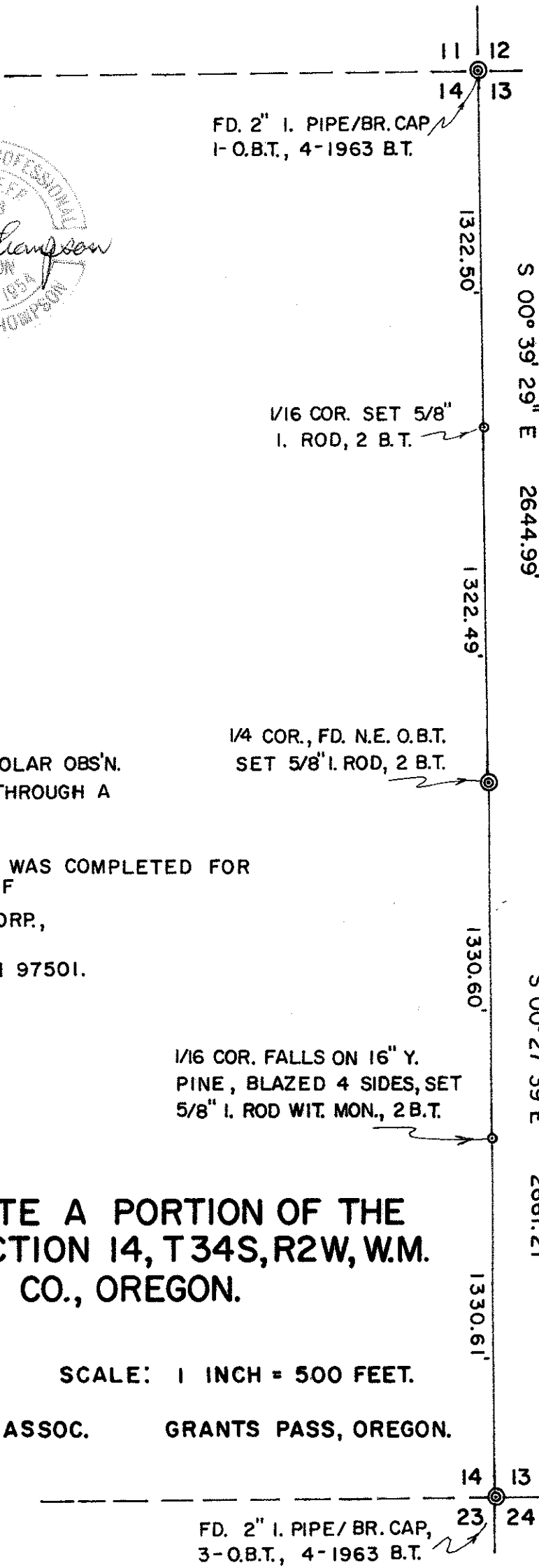


6530



FD. 2" I. PIPE/BR. CAP  
1-O.B.T., 4-1963 B.T.

1/16 COR. SET 5/8"  
I. ROD, 2 B.T.

1/4 COR., FD. N.E. O.B.T.  
SET 5/8" I. ROD, 2 B.T.

1/16 COR. FALLS ON 16" Y.  
PINE, BLAZED 4 SIDES, SET  
5/8" I. ROD WIT. MON., 2 B.T.

NOTE: BEARINGS BASED ON SOLAR OBS'N.  
TAKEN JULY 29, 1976 THROUGH A  
THIN OVERCAST.

THIS SURVEY AND MAP WAS COMPLETED FOR  
THE EXCLUSIVE USE OF

BOISE CASCADE CORP.,  
P. O. BOX 100,  
MEDFORD, OREGON 97501.

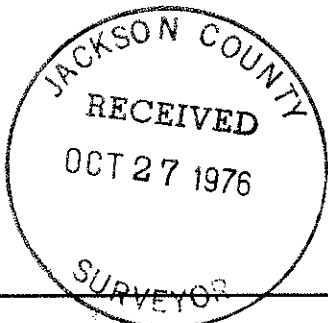
### SURVEY TO LOCATE A PORTION OF THE EAST LINE OF SECTION 14, T34S, R2W, W.M. JACKSON CO., OREGON.

AUGUST 10, 1976.

SCALE: 1 INCH = 500 FEET.

ROBERT M. THOMPSON & ASSOC.

GRANTS PASS, OREGON.



6530

6580

Survey to Locate a Portion of the East Line of Section 14, T34S R2W, W.M., Jackson County, Oregon

Narrative Description to comply with Par. 209.250, O.R.S.

for: Boise Cascade Corp., P. O. Box 100, Medford, Oregon 97501

Purpose: To set corners for and mark the east lines of the SE1/4NE1/4 and NE1/4SE1/4

Procedure: Beginning at the Northeast Section Corner, a 2 inch iron pipe w/brass cap and bearing trees, a survey (using K&E Theodolite and 300 foot steel tape) was run southward. At the East 1/4 corner the original northeast bearing tree was found, from which the corner position was established. The survey was continued to the Southeast Section corner, marked by a 2 Inch Iron pipe w/brass cap and bearing trees. All angles were turned 3 times, and measurements were double-checked. The true lines and required 1/16 corner positions were computed and set, with the east lines of the SE1/4NE1/4 and NE1/4SE1/4 being marked with orange-painted blazes. True bearings are as shown on my map, based on solar observations taken through a thin overcast. Data for corners found and set, is as follows. All bearing tree measurements are to tree centers, except for original old bearing trees being measured to the faces.

NE Section Cor., found 2" I. Pipe w/1963 B.L.M. Brass Cap, in stone mound and O.B.T. 16" B. Oak Stub S16°W 8.6', down, w/faint scribe, and 1963 B.L.M. B.T.'s:  
12" D. Fir N 15°E 55.4', face healed  
15" D. Fir S 20-1/2°E 108.9', face healed  
23" B. Oak S 70-1/2°W 50.2', scribe visible  
8" D. Fir N 27-1/2°W 23.8', face healed

N 1/16 Cor. Secs. 14 & 13, set 5/8" x 30" I. Rod w/Yellow cap, 6" high,  
Scribe "1/16S 3683 BT" on:  
14" Madrone N 82°45'E 21.62'  
16" D. Fir N 10°15'W 31.84'

1/4 Cor. Secs. 14 & 13, found dim scribe by cutting out old face in O.B.T., 21" W. Oak N 33°E 44.2', from which I set 5/8" x 30" I. Rod w/Yellow cap, 6" high  
Scribe "1/4S 3683 BT" on:  
9" D. Fir S 37°45'E 11.95'  
11" W. Oak N 21°45'W 23.82'

S 1/16 Cor. Secs. 14 & 13 falls on a 16" Y. Pine which I blaze on 4 sides, from which I set 5/8" x 30" I. Rod w/Yel. cap witness mon. N 14°07'W 1.0', from which I scribe witness mon. B.T.'s "W C 1/16S BT" on:  
7" Madrone S 87°15'E 10.88'  
8" B. Oak S 43°30'W 25.83'

SE Section Cor., found 2" I. Pipe w/1963 B.L.M. Brass Cap, and O.B.T.'s:  
24" B. Oak N 71°E 32.3', face healed  
15" B. Oak S 48°E 75.9', face healed  
24" B. Oak S 48°W 26.4', face healed  
and 1963 B.T.'s:  
15" D. Fir N 65-1/2°E 29.7', face healed  
11" D. Fir S 12°E 40.3', face healed  
7" D. Fir S 61-1/2°W 61.4', scribe visible  
15" D. Fir N 57-1/2°W 36.6', scribe visible

August 10, 1976

