

# CHESTNUT PARK SUBDIVISION

IN LOT I, CONSTANT TRACT NW 1/4 SECTION II, T. 37 S., R. 2 W., W.M.  
CENTRAL POINT, JACKSON COUNTY, OREGON

## DEDICATION

KNOW ALL MEN BY THESE PRESENTS, That we, Hutchins and Clarke Construction, Incorporated, an Oregon Corporation, are the owners in fee simple of the lands hereon described, and that we have subdivided the same into lots as shown hereon, and the number and size of the lots and lengths of all lines are plainly set forth, and that this plat is a correct representation of the said subdivision, and we do hereby dedicate to the public for public use all utility easements shown hereon, and we do hereby designate said subdivision as CHESTNUT PARK SUBDIVISION.

IN WITNESS WHEREOF, we have set our hands and seals this 26 day of July, 1976

Hutchins and Clarke Construction Incorporated

Duane Hutchins  
President

STATE OF OREGON)  
County of Jackson ) SS

On this 26 day of July, 1976, before me appeared Duane Hutchins, known to me personally, who being duly sworn, did say that he is the President of the Corporation that executed the foregoing instrument, and acknowledged said instrument to be the free and voluntary act and deed of said Corporation for the uses and purposes therein described, and is authorized to execute said instrument, and that the seal affixed is the corporate seal of said Corporation.  
IN TESTIMONY WHEREOF, I have hereunto set my hand and affixed my official seal the day and year last above written.

Allen James Storton  
Notary Public for Oregon

My Commission expires the 17 day of June, 1979.

Examined and approved by the City of Central Point Planning Commission in regular session this the 17<sup>th</sup> day of July, 1976.

Attest: [Signature]  
Secretary

Donald C. Banks  
President

Examined and approved this 17<sup>th</sup> day of AUGUST, 1976.

Ronald J. Young  
City Engineer

Examined and approved this 1<sup>st</sup> day of OCTOBER, 1976

by [Signature]  
Deputy

Roy E. Stewart  
Director of Assessment and Taxation

This Subdivision subject to the provisions of City of Central Point Ordinance No. 1049.

Examined and approved by the City of Central Point City Council in regular session this 31<sup>st</sup> day of AUGUST, 1976.

[Signature]  
Mayor

[Signature]  
City Recorder

For order of the Board of County Commissioners approving this plat see Volume \_\_\_\_\_, Page \_\_\_\_\_, of County Commissioners' Journal of proceedings.

by \_\_\_\_\_  
Deputy

\_\_\_\_\_  
County Clerk

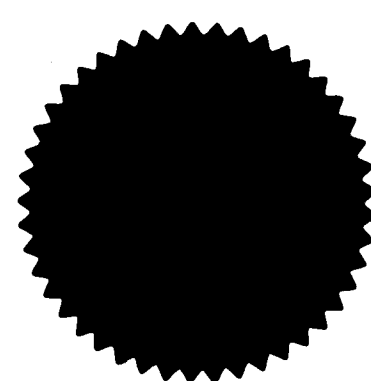
Filed for Record this the 6 day of October, 1976, at 4:05 o'clock P. M. and recorded in 16 Volume of plats at page 71 of records of Jackson County, Oregon.

by \_\_\_\_\_  
Deputy

[Signature]  
County Clerk

This is to certify that this tracing is an exact copy of the original plat

[Signature]  
Surveyor

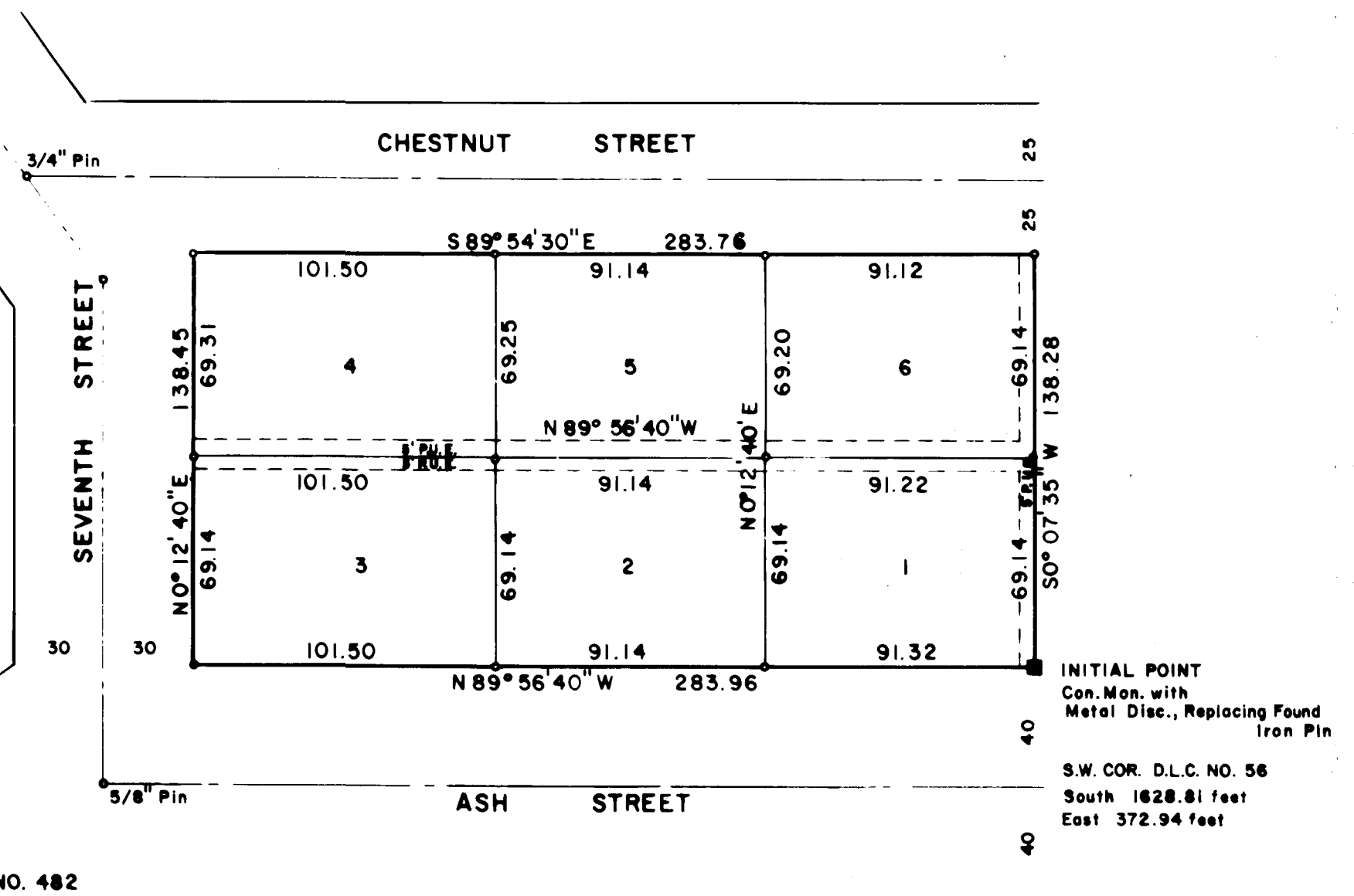
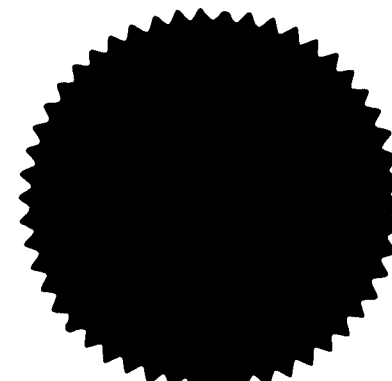
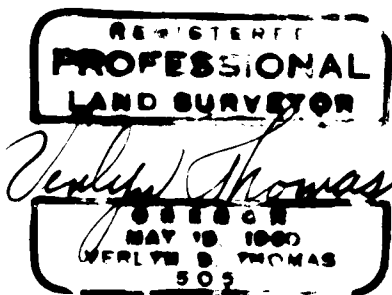


SCALE: 1" = 50'

### LEGEND

- o Monument Found
- o 5/8"x24" Iron Pin Set

BASIS OF BEARINGS:  
RECORDED SURVEY NO. 482



## SURVEYOR'S CERTIFICATE

STATE OF OREGON)  
County of Jackson ) SS

I, Verlyn Thomas, a duly registered Surveyor of the State of Oregon, being first duly sworn, do hereby certify that I have correctly surveyed and marked with proper monuments as provided by law the tract of land hereon shown and the said plat is a correct representation of the same, and the following is an accurate description of the boundary lines:

Beginning at a concrete monument with metal disc marking the Southeast corner of Lot 1, CONSTANT TRACT in the City of Central Point, from which the Southwest corner of Donation Land Claim No. 56, Township 37 South, Range 2 West, Willamette Meridian, Jackson County, Oregon, bears South 1628.81 feet and East, 372.94 feet; thence North 89° 56' 40" West, along the north line of Ash Street, 283.96 feet; thence North 0° 12' 40" East, along the East line of Seventh Street, 138.45 feet; thence South 89° 54' 30" East, along the south line of Chestnut Street, 283.76 feet to the east line of said Lot 1; thence South 0° 07' 35" West, along said east line, 138.28 feet to the Initial Point of Beginning.

[Signature]  
Surveyor

Subscribed and sworn to before me this 23<sup>rd</sup> day of July, 1976.

[Signature]  
Notary Public for Oregon

My commission expires the 4<sup>th</sup> day of March, 1977.