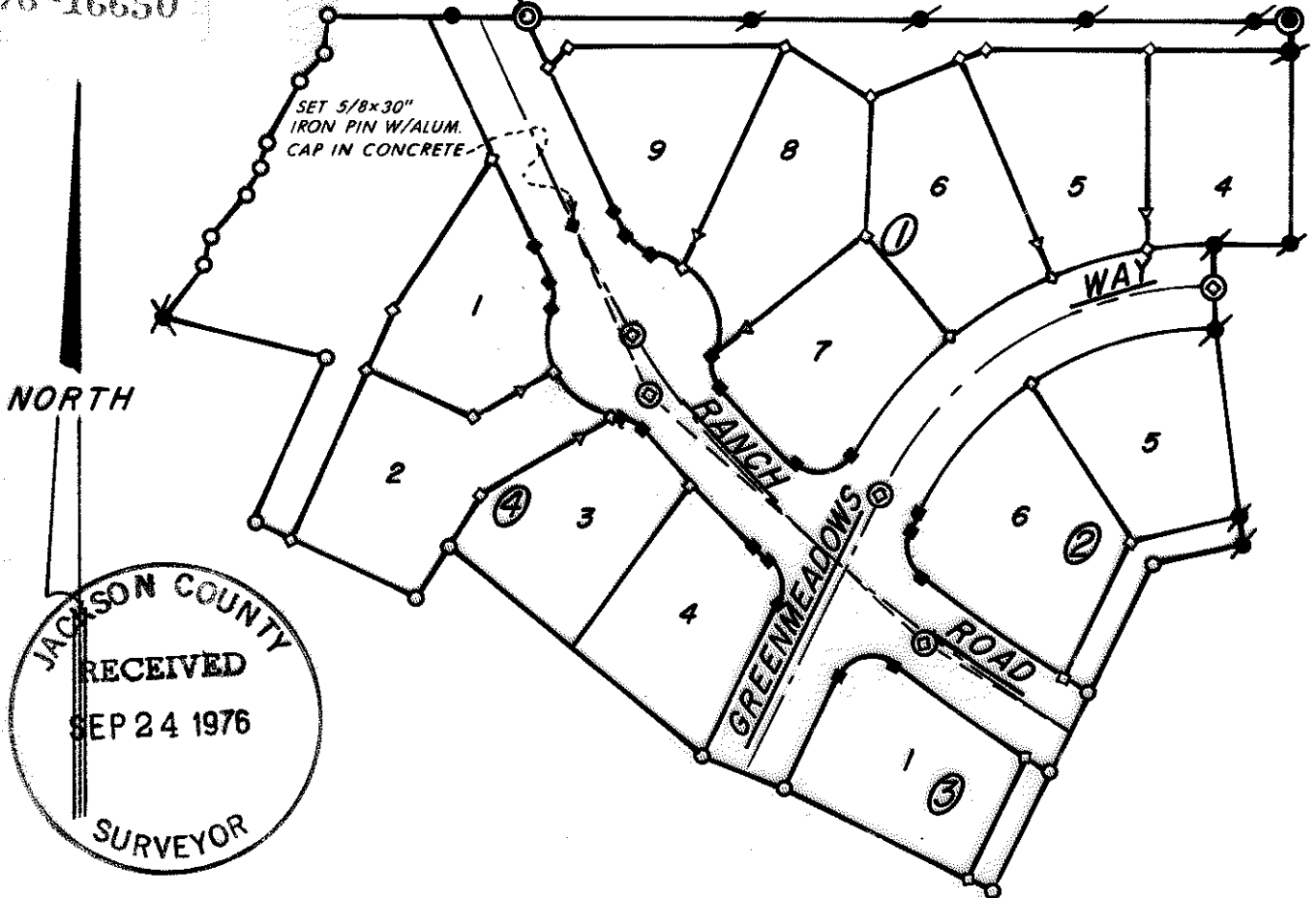


6484

76-16650

Initial Point
MOUNTAIN RANCH SUB. UNIT NO. 2



**MOUNTAIN RANCH SUBDIVISION UNIT NO. 2
TO THE CITY OF ASHLAND**

LOCATED IN THE NW 1/4 OF SEC. 23, T. 39S., R. 1 E.W.M., JACKSON COUNTY, OREGON

**POST MONUMENTATION MAP
AUGUST 2, 1976**

- MONUMENTS PER ORIGINAL SUBDIVISION PLAT
- ◆ MONUMENTS PER ORIGINAL SUBDIVISION PLAT
- ✕ MONUMENTS PER ORIGINAL SUBDIVISION PLAT
- MONUMENTS PER ORIGINAL SUBDIVISION PLAT
- ⊙ MONUMENTS PER ORIGINAL SUBDIVISION PLAT
- ◇ SET 5/8 x 24 INCH IRON PIN TAGGED R.L.S. 759
- ◆ SET 5/8 x 30 INCH IRON PIN TAGGED R.L.S. 759
- △ SET 5/8 x 24 INCH IRON PIN WITH ALUMN. CAP
mkd. SWAIN SURVEYING
WIT. COR.
1976
- ⊕ SET 1 1/2 INCH PIPE WITH BRONZE DISK IN
MONUMENT CASE

NOTE:

SEE PLAT OF MOUNTAIN RANCH SUBDIVISION UNIT NO. 2
FILED FOR RECORD THE 3RD DAY OF MARCH, 1976 AT
12:25 O'CLOCK P.M. AND RECORDED IN VOLUME 12 OF
PLATS AT PAGE 57 OF RECORDS OF JACKSON COUNTY,
OREGON FOR LOT BEARINGS AND DISTANCES.

I, EVERETT L. SWAIN, DULY REGISTERED SURVEYOR
OF THE STATE OF OREGON, DO HEREBY CERTIFY
THAT THIS MAP REPRESENTS A SURVEY MADE BY
ME OR UNDER MY DIRECTION AND THE MONUMENTS
CONFORM TO O.R.S. 92.060.

EXAMINED AND APPROVED THIS
4th DAY OF August
19 76.

Allen A. Alsing
CITY ENGINEER

FILED FOR RECORD THIS 22
DAY OF September, 19 76
AT 2:18 O'CLOCK P.M. AND
RECORDED IN THE OFFICIAL
RECORDS OF JACKSON COUNTY,
OREGON.

Harry Chapman
COUNTY CLERK

Betty Key
DEPUTY

REGISTERED
PROFESSIONAL
LAND SURVEYOR

Everett L. Swain
OREGON
JULY 8, 1968
EVERETT L. SWAIN
759

6484

SURVEY NO. 6484

SURVEY NARRATIVE TO COMPLY WITH PARAGRAPH 209.250
OREGON REVISED STATUTES

SURVEY FOR: Vincent L. Oredson
236 East Main Street
Ashland, Oregon 97520

LOCATION: Situated in the Northwest quarter of Section 23, Township 39 South,
Range 1 East of the Willamette Base and Meridian, Jackson County,
Oregon.

PROCEDURE: Lots 3 and 4 of Block 4 of Mountain Ranch Subdivision Unit No. 2
and Lot 1 of Block 3 of the said subdivision were revised and
included in Mountain Ranch Subdivision Unit No. 3. Therefore,
any reference to these lots should be made to the plat now on
record and recorded as Mountain Ranch Subdivision Unit No. 3.

August 2, 1976

Everett L. Swain
Professional Land Surveyor
Ashland, Oregon

