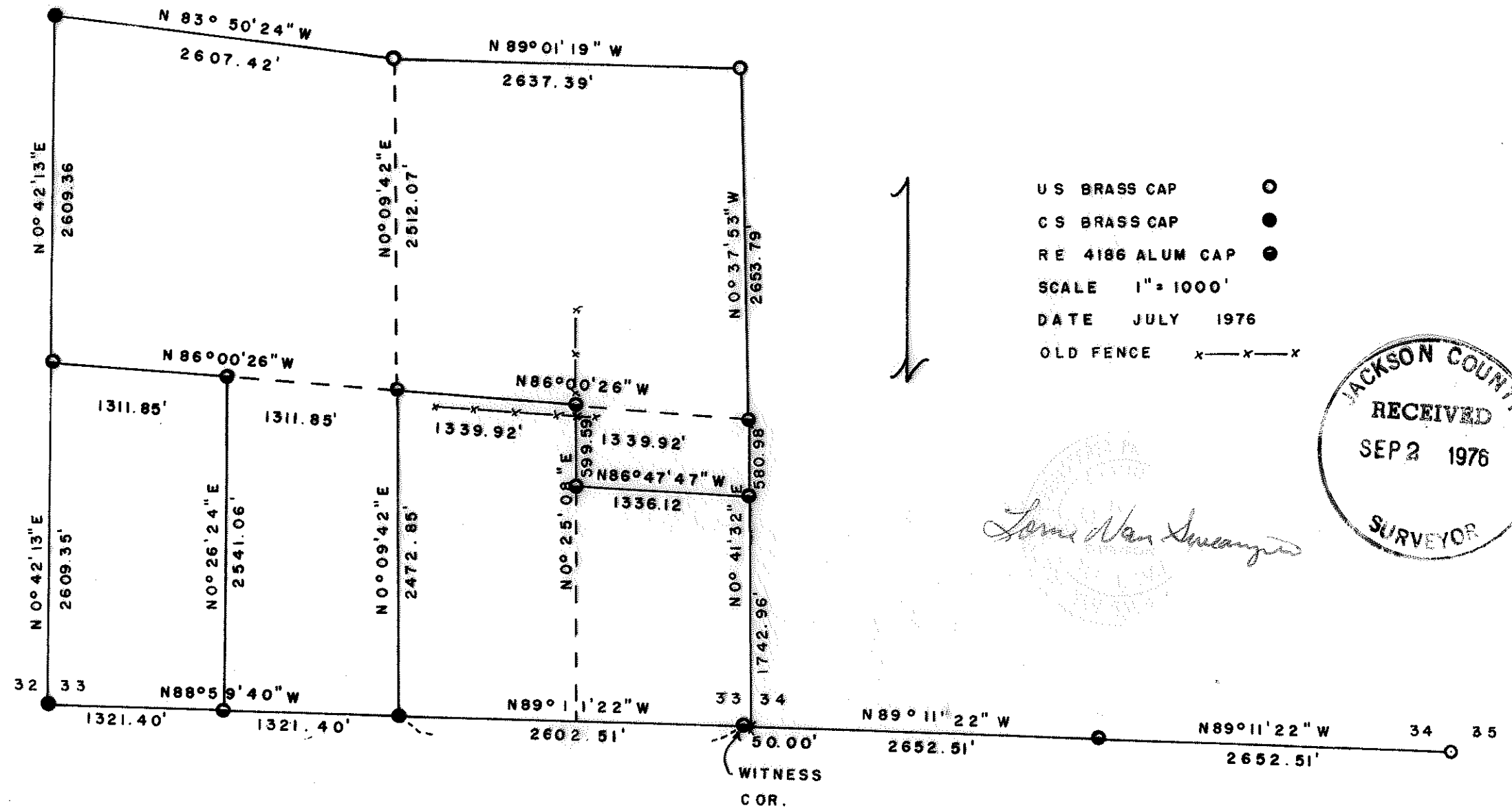


6458

SECTION PLAT
S33 TWP34S R2E WM 6
SOUTH LINE S34 TWP34S R2E WM



6458

NARRATIVE: SECTION 33, TOWNSHIP 34 SOUTH, RANGE 2 EAST, WILLAMETTE MERIDIAN (CONT'D)

INTERIOR LINES:

Ran from W 1/16 Corner common to Section 33, Township 34 South, Range 2 East, and Section 4, Township 35 South, Range 2 East, N 0°26'24"E 2541.06 feet to CW 1/16 Section 33. Set 5/8"x30" rebar with Alum. Cap, stamped:

RE 4186
CW
 $\frac{1}{16}$
S33 T34S R2E

Scribed RE 4186 BT
13" D. Fir S43°E 12.2 feet
8" D. Fir N7°E 15.5 feet

Thence run N 86°00'26" W 1311.85 feet to W 1/4 Corner, Section 33.

Run from 1/4 Corner common to Section 33, Township 34 South, Range 2 East, and Section 4, Township 35 South, Range 2 East, N 0°09'42" E 2472.85 feet to C 1/4 Corner Section 33. Set 5/8"x30" rebar with Alum. Cap, stamped:

RE 4186
C
S33 $\frac{1}{4}$
T34S R2E

Scribed RE 4186 BT
11" D. Fir S33°W 10.7 feet
12" D. Fir S68°E 28.1 feet

Thence S 86°00'26" E 1339.92 feet to CE 1/16 Section 33. Set 5/8"x30" rebar under N-S fence line with Alum. Cap, stamped:

RE 4186
CE
S33 $\frac{1}{16}$
T34S R2E

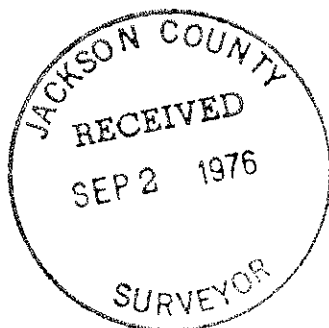
Scribed RE 4186 BT
9" P. Pine S39 1/2°E 9.2 feet
9" W. Oak S52°W 36.4 feet

Thence S 0°25'08" W 599.59 feet to C-N SE 1/64 Corner Section 33. Set 5/8"x30" rebar with Alum. Cap, stamped:

RE 4186
C-N
SE
 $\frac{1}{64}$
S33 $\frac{1}{64}$
T34S R2E

Scribed RE 4186 BT
9" Cedar N71 1/2°W 24.6 feet
12 1/2" D. Fir N72°E 27.0 feet

Thence S 86°47'47" E 1336.12 feet to N-S 1/64 Corner common to Section 33 and Section 34.



NARRATIVE: SECTION 33, TOWNSHIP 34 SOUTH, RANGE 2 EAST, WILLAMETTE MERIDIAN (CONT'D)

2633.51 ft. Left Bank of Big Butte Creek
 2652.51 ft. Corner common to Section 33 and Section 34, Township 34 South, Range 2 East, and Section 3 and Section 4, Township 35 South, Range 2 East, falls in Big Butte Creek by proportionate measure.

SOUTH LINE: Section 34, Township 34 South, Range 2 East
 Bearing S 89°11'22" E

0.00 ft. Corner common to Section 33 and Section 34, Township 34 South, Range 2 East, and Section 3 and Section 4, Township 35 South, Range 2 East.
 52.23 ft. Right Bank of Big Butte Creek
 2652.51 ft. Set 1/4 Corner common to Section 34, Township 34 South, Range 2 East, and Section 3, Township 35 South, Range 2 East, by proportionate measure. Alum. Cap in a 14"x22" flat rock, stamped:

RE 4186
 S34 T34S
 $\frac{1}{4}$
 S3 T35S
 R2E

Scribed RE 4186 BT
 21" P. Pine N39°15'W 48.40 feet
 11" W. Oak S61°49'W 106.5 feet

5305.02 ft. Corner common to Section 34 and Section 35, Township 34 South, Range 2 East, and Section 2 and Section 3, Township 35 South, Range 2 East

EAST LINE: Bearing South half N 0°41'32" E

0.00 ft. SE Corner
 1742.96 ft. Set N-S 1/64 Corner common to Section 33 and Section 34, Township 34 South, Range 2 East, 5/8"x30" rebar with Alum. Cap, stamped:

N-S
 RE $\frac{1}{64}$
 4186 $\frac{1}{64}$
 33/34
 T34S R2E

Scribed RE 4186 BT
 10" P. Pine N66°50'W 11.1 feet
 7" B. Oak S38°57'E 30.6 feet

2323.94 ft. E 1/4 Corner set 5/8"x30" rebar with Alum. Cap, stamped:

RE 4186
 S33 $\frac{1}{4}$ S34
 $\frac{1}{4}$
 T34S R2E

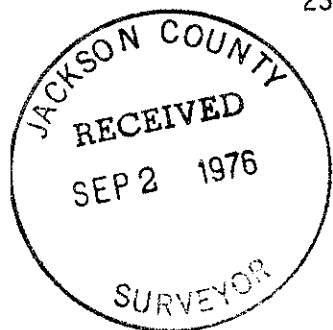
Scribed RE 4186 BT
 4" W. Oak N75-3/4°E 4.9 feet
 6" W. Oak N23 1/4°E 35.5 feet

Bearing North half N 0°37'53" W
 0.00 ft. E 1/4 Corner
 2653.79 ft. NE Corner

NORTH LINE: Bearing East half N 89°01'19" W

0.00 ft. NE Corner
 2637.39 ft. N 1/4 Corner

Bearing West half N 83°50'24" W
 0.00 ft. N 1/4 Corner
 2607.42 ft. NW Corner



SECTION 33, TOWNSHIP 34 SOUTH, RANGE 2 EAST
WILLAMETTE MERIDIAN

NARRATIVE:

OBJECT: For Medford Resources Corporation to monument corners and mark property lines:

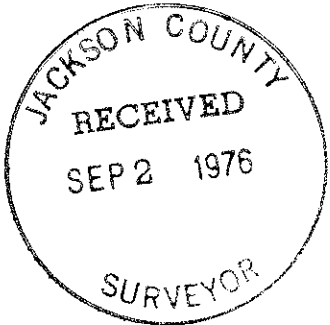
Found following evidence:

- SW Corner C.S. B.C. and BT's (1976) set from original evidence.
- S $\frac{1}{4}$ Corner C.S. B.C. and BT's (1976) set from original evidence.
- SE Corner No evidence found; spent 4 man days searching.
- $\frac{1}{4}$ Corner Common to Section 34, Township 34 South, and Section 3, Township 35 South, Range 2 East. No evidence found; 4 man days spent searching.
- Corner Common to Section 34 and Section 35, Township 34 South, and Section 2 and Section 3, Township 35 South, Range 2 East. U.S. B.C. and BT's set from original evidence.
- E $\frac{1}{4}$ Corner Section 33. Original BT's at record distance from corner NW tree Black Oak stub dead center rotted out; old axe work visible. SE tree Black Oak center rotted out; old axe work in tree.
- NE Corner U.S. B.C. & BT's set from original trees.
- N $\frac{1}{4}$ Corner U.S. B.C. & BT's set from original trees and C.S. tree.
- NW Corner C.S. B.C. & BT's (1976) set from original trees and C.S. tree.
- W $\frac{1}{4}$ Corner RE 4186 Alum. Cap and BT's.

Ran transit and chain closed traverse survey. Bearings from work done in Section 32 adjusted for Earth's curvature.

SOUTH LINE: Bearing West half S 88⁰59'40" E
 0.00 ft. SW Corner
 1321.40 ft. Set West 1/16 Corner common to Section 33, Township 34 South, Range 2 East, and Section 4, Township 35 South, Range 2 East, 5/8"x30" rebar with Alum. Cap, stamped:

RE 4186
 S33 T34S
 W 1 R2E
 16
 S4 T35S

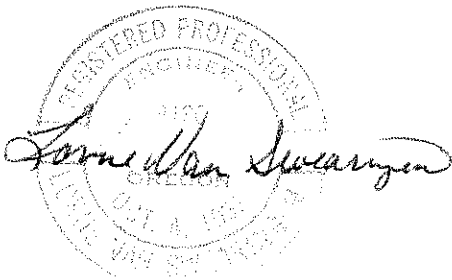


Scribed RE 4186 BT's
 11 $\frac{1}{2}$ " D. Fir N24 $\frac{1}{2}$ ⁰W 9.8 feet
 19" D. Fir S14 $\frac{1}{2}$ ⁰E 26.8 feet

2642.80 ft. S $\frac{1}{4}$ Corner

Bearing East half S 89⁰11'22" E
 0.00 ft. S $\frac{1}{4}$ Corner
 2602.51 ft. Set witness corner for Section 33 and Section 34, Township 34 South, Range 2 East, and Section 3 and Section 4, Township 35 South, Range 2 East, 5/8"x30" rebar with Alum. Cap, stamped:

RE 4186
 S33 S34 T34S
 WC
 S4 S3 T35S
 R2E



Scribed RE 4186 BT
 9" D. Fir N11⁰53'E 7.8 feet
 17 $\frac{1}{2}$ " D. Fir S16⁰50'W 21.9 feet
 4 $\frac{1}{2}$ " D. Fir N30⁰03'W 17.9 feet
 7" Madrona S72⁰02'E 16.5 feet