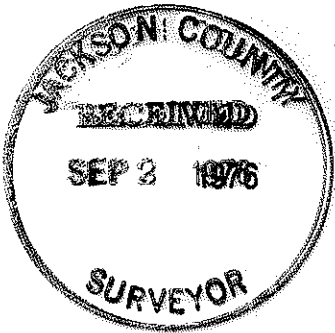
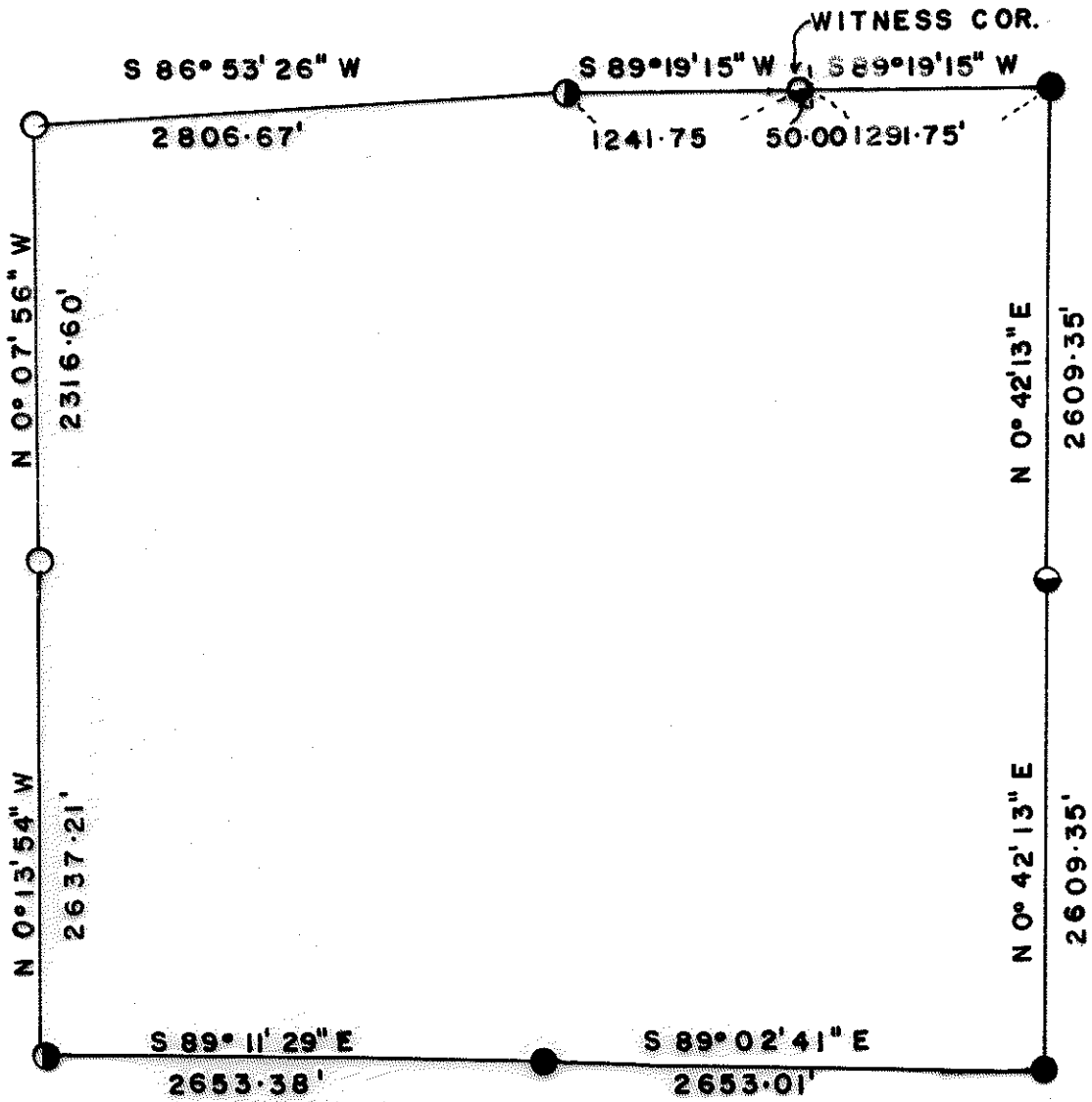


6457

SECTION 32 T34S R2E WM

JULY 12, 1976

1569



- U.S. B.C.
- C.S. B.C.
- ⊙ C.S. G.I. PIPE
- ⊖ RE 4186
- 1" = 1000'



6457

SECTION 32, TOWNSHIP 34 SOUTH, RANGE 2 EAST
WILLAMETTE MERIDIAN

NARRATIVE:

OBJECT: For Medford Resources Corporation to monument corners and mark property lines:

Found following evidence:

SE Corner C.S. B.C. and BT's (1976) set from original evidence.
 E $\frac{1}{4}$ Corner No evidence found. Spent 4 man days searching. Set by proportionate measurement.
 NE Corner C.S. B.C. and BT's (1976) set from original evidence.
 N $\frac{1}{4}$ Corner G.I. Pipe and C.S. BT's, 1 original BT open.
 NW Corner U.S. B.C. and BT's set from original evidence.
 W $\frac{1}{4}$ Corner U.S. B.C. and BT's set from original evidence.
 SW Corner G.I. Pipe and C.S. BT's set from original evidence.
 S $\frac{1}{4}$ Corner C.S. B.C. and BT's (1976) set from original evidence.

Ran transit and chain random line traverse beginning at the SW Corner along South line, East line, and North line tying to previous work in Section 31, Township 34 South, Range 2 East, Willamette Meridian, bearings from recorded survey Number 6333.

SOUTH LINE: Bearing West half S 89⁰11'29" E
 0.00 ft. SW Corner
 2653.38 ft. S $\frac{1}{4}$ Corner

Bearing East half S 89⁰02'41" E
 0.00 ft. S $\frac{1}{4}$ Corner
 2653.01 ft. SE Corner

EAST LINE: Bearing N 0⁰42'13" E
 0.00 ft. SE Corner
 2609.35 ft. Set by proportionate measurement E $\frac{1}{4}$ Corner 5/8"x30" rebar with Aluminum Cap, stamped:

RE 4186
 S32 $\frac{1}{4}$ S33
 4
 T34S R2E

Scribed RE 4186 BT
 17 $\frac{1}{2}$ " D. Fir S14 $\frac{1}{4}$ ⁰E 11.1 feet
 8 $\frac{1}{2}$ " D. Fir N38 $\frac{1}{4}$ ⁰W 8.4 feet

5218.70 ft. NE Corner

NORTH LINE: Bearing East half S 89⁰19'15" W
 0.00 ft. NE Corner
 1291.75 ft. E1/16 common to S. 29 and S. 32, falls in Eagle Point Irrigation District canal.
 1341.75 ft. Set witness corner for E1/16 common to S. 29 and S. 30 5/8"x30" rebar with Aluminum Cap, stamped:

RE 4186
 WC
 S29 E $\frac{1}{16}$ →
 S32 $\frac{1}{16}$
 T34S R2E

Scribed RE 4186 BT
 5 $\frac{1}{2}$ " D. Fir N75⁰02'W 11.9 feet
 9" Madrona S0⁰34'W 28.0 feet

2583.50 ft. N $\frac{1}{4}$ Corner

Bearing West half S 86⁰53'26" W
 0.00 ft. N $\frac{1}{4}$ Corner
 2806.67 ft. NW Corner

