

76-12998

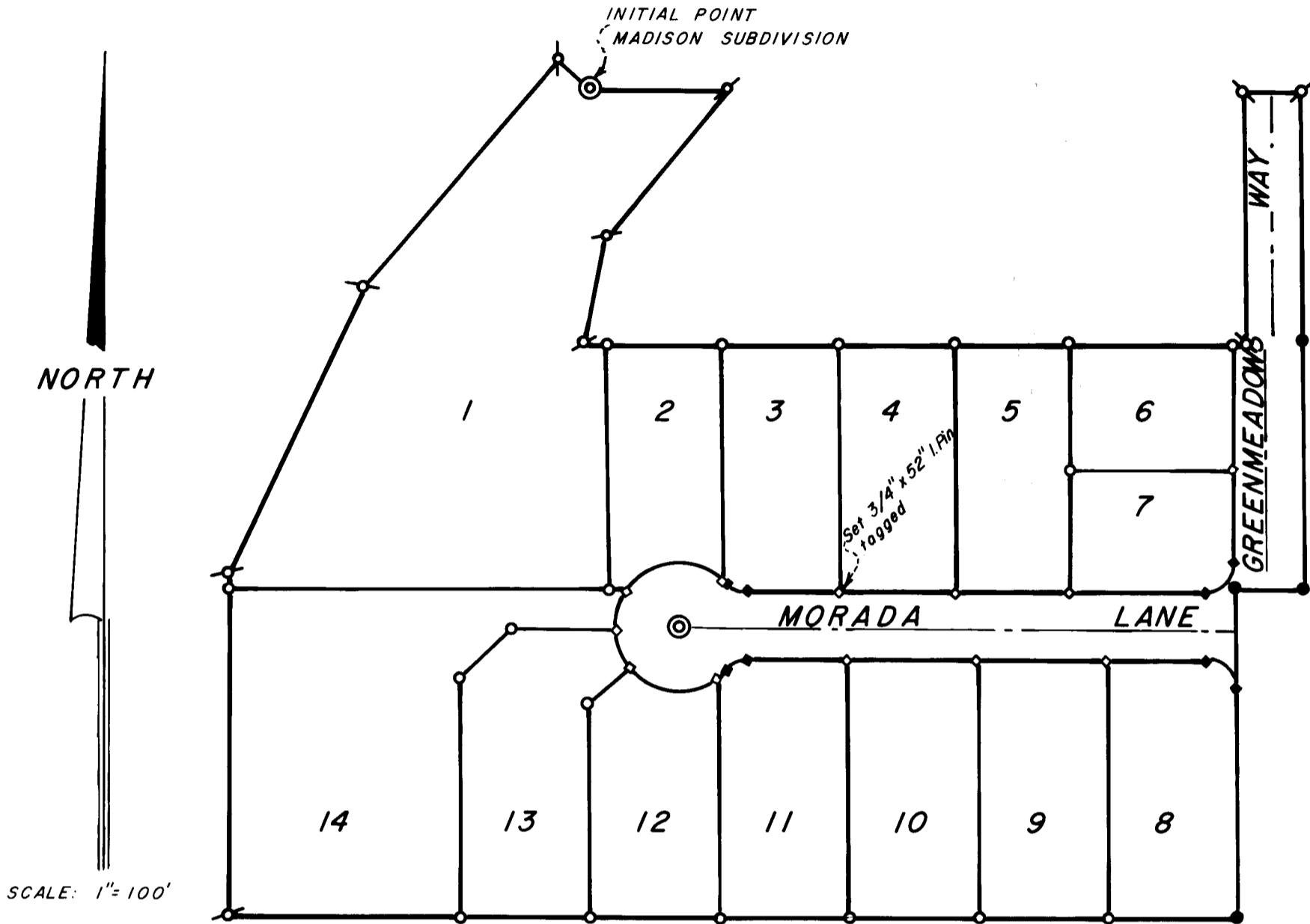
6439 1

76-12998

# MADISON SUBDIVISION

## TO THE CITY OF ASHLAND

LOCATED IN THE SW 1/4 OF SEC. 14, TWP. 39S., R.1E.W.M., JACKSON COUNTY, OREGON



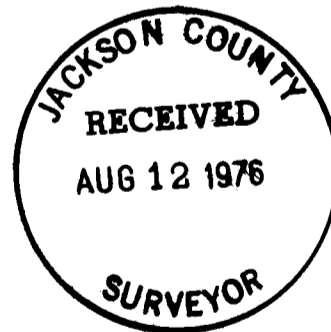
76-12998

### POST MONUMENTATION MAP JULY 12, 1976

- MONUMENTS PER ORIGINAL SUBDIVISION PLAT
- MONUMENTS PER ORIGINAL SUBDIVISION PLAT
- ⊗ MONUMENTS PER ORIGINAL SUBDIVISION PLAT
- ◇ SET 5/8 x 24 INCH IRON PIN TAGGED RLS 759
- ◆ SET 5/8 x 30 INCH IRON PIN TAGGED RLS 759
- ⊙ SET 1/2 INCH PIPE WITH BRONZE DISK IN MONUMENT CASE

### NOTE:

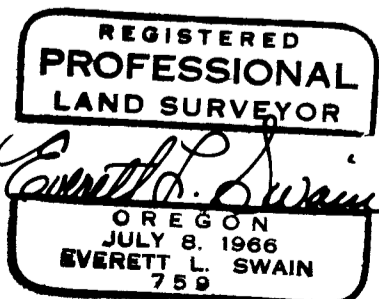
SEE PLAT OF MADISON SUBDIVISION FILED FOR RECORD THE 18TH DAY OF FEBRUARY 1976 AT 2:12 O'CLOCK P.M. AND RECORDED IN VOLUME 12 OF PLATS AT PAGE 56 OF RECORDS OF JACKSON COUNTY, OREGON FOR LOT BEARINGS AND DISTANCES.



I, EVERETT L. SWAIN, DULY REGISTERED SURVEYOR OF THE STATE OF OREGON, DO HEREBY CERTIFY THAT THIS MAP REPRESENTS A SURVEY MADE BY ME OR UNDER MY DIRECTION AND THE MONUMENTS CONFORM TO O.R.S. 92.060

EXAMINED AND APPROVED THIS 15<sup>th</sup> DAY OF July 19 76

*Allen H. Alsing*  
CITY ENGINEER



FILED FOR RECORD THIS 30<sup>th</sup> DAY OF July 19 76 AT 2:37 O'CLOCK P.M. AND RECORDED IN THE OFFICIAL RECORDS OF JACKSON COUNTY, OREGON.

*Harry Chapman* COUNTY CLERK  
*Ruby A. Folsing* DEPUTY

6439