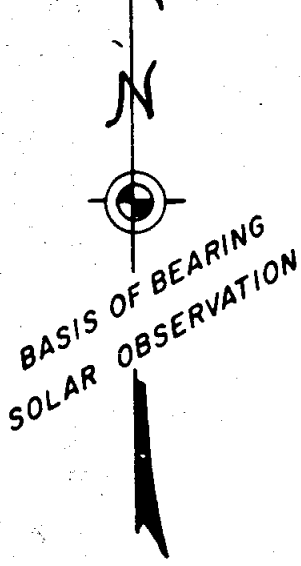
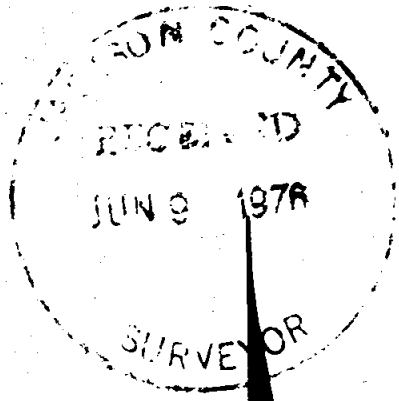


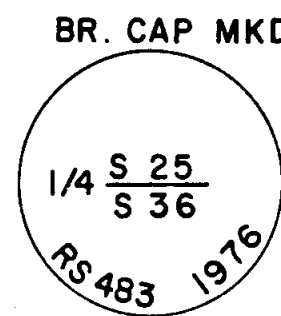
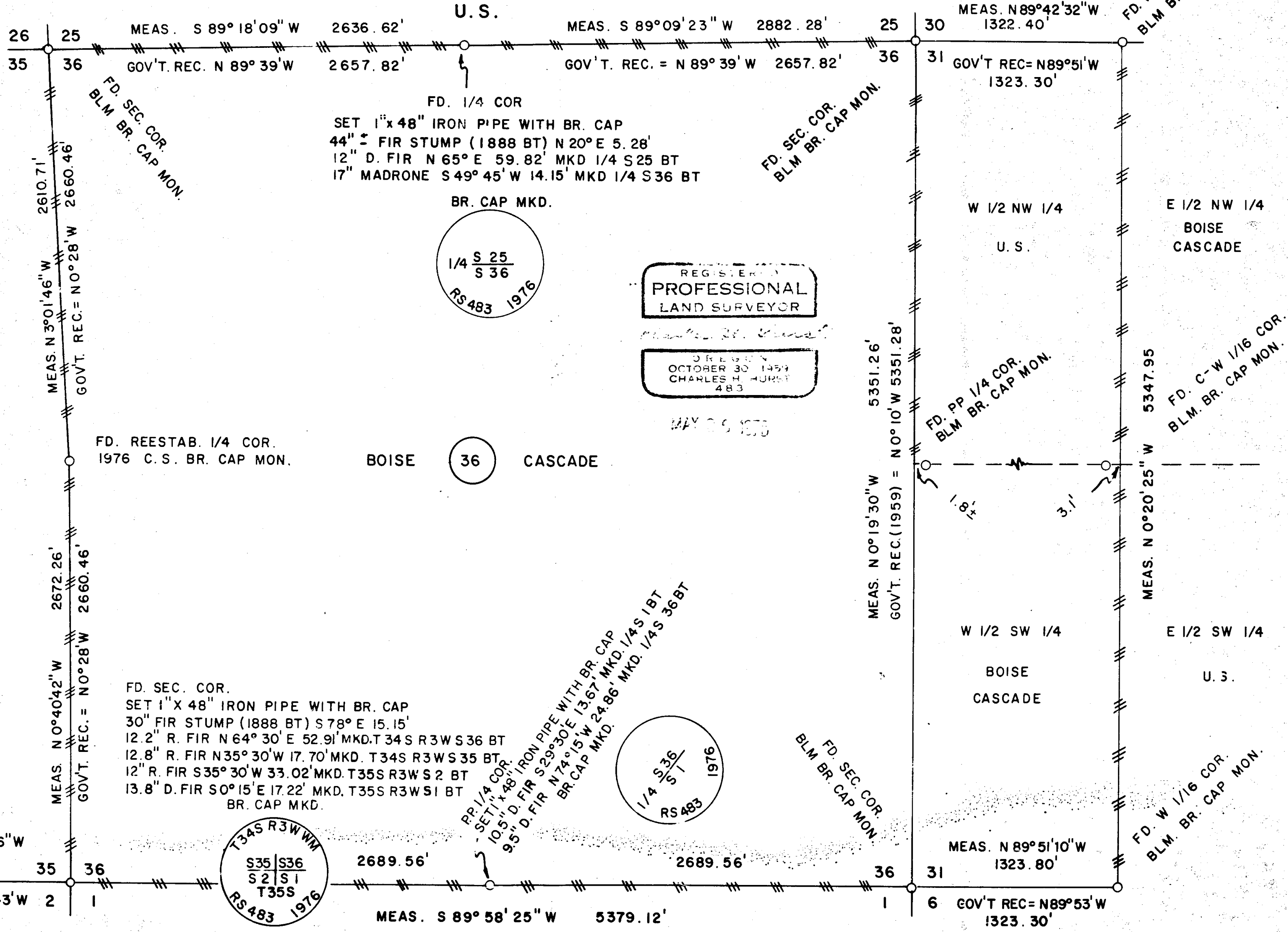
6369

DEPENDENT RESURVEY OF SEC. 36, T. 34 S., R. 3 W. & THE W 1/2 W 1/2 OF SEC. 31, T. 34 S., R. 2 W., W.M., JACKSON COUNTY, OREGON

FOR BOISE CASCADE TIMBER & WOOD PRODUCTS GROUP U.S.



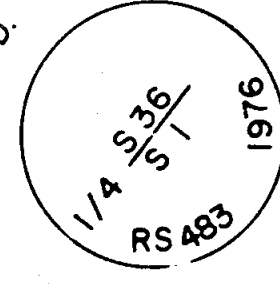
SCALE: 1" = 600'



REGISTERED PROFESSIONAL LAND SURVEYOR

OREGON OCTOBER 30, 1954 CHARLES H. HURST 483

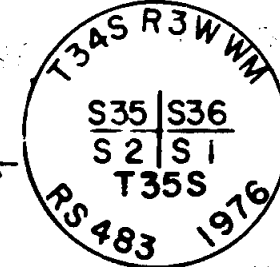
MAY 29 1976



FD. 1/4 COR. & B. OAK BT IN SW QUAD. 1/2" IRON PIPE PER SURVEY NO. 2922

FD. SEC. COR. SET 1" X 48" IRON PIPE WITH BR. CAP 30" FIR STUMP (1888 BT) S 78° E 15.15' 12.2" R. FIR N 64° 30' E 52.91' MKD. T 34 S R 3 W S 36 BT 12.8" R. FIR N 35° 30' W 17.70' MKD. T 34 S R 3 W S 35 BT 12" R. FIR S 35° 30' W 33.02' MKD. T 35 S R 3 W S 2 BT 13.8" D. FIR S 0° 15' E 17.22' MKD. T 35 S R 3 W S 1 BT BR. CAP MKD.

PP. 1/4 COR. SET 1" X 48" IRON PIPE WITH BR. CAP 10.5" D. FIR S 29° 30' E 13.67' MKD. 1/4 S 1 BT 9.5" D. FIR N 74° 15' W 24.86' MKD. 1/4 S 36 BT BR. CAP MKD.



SURVEY BY: CHARLES H. HURST MEDFORD, OREGON

LEGEND TRUE LINES BRUSHED AND MKD. WITH TRIPLE BLAZES AND ALUMINUM TAGS.

6369

6369

SURVEY NARRATIVE TO COMPLY WITH PARAGRAPH 209.250

OREGON REVISED STATUTES

REGISTERED  
PROFESSIONAL  
LAND SURVEYOR

*Charles H. Hurst*

OREGON  
OCTOBER 30, 1959  
CHARLES H. HURST  
483

Survey for: Boise Cascade Timber and Wood Products Group  
P.O. Box 100  
Medford, Oregon 97501

Survey by: Charles H. Hurst  
304 South Holly  
Medford, Oregon 97501

MAY 26 1976

Bearing: Based on solar observation at the W 1/4 corner of  
Section 36 on February 11, 1976.

Purpose: To set the N, W and S 1/4 corners of Section 36 in  
addition to the SW section corner thereof and blaze  
and tag true lines as shown on the attached plat.

JACKSON COUNTY  
RECEIVED  
JUN 9 1976  
SURVEYOR

Procedure:

Triangulation control was established utilizing EDM equipment and true lines were run on the basis of resulting computations thus closing angularly on all corners pertinent to Section 36 and the W 1/2 W 1/2 of Section 31.

Assistance was requested and received from the Jackson County Surveyor resulting in the reestablishment of the W 1/4 of Section 36 and a thorough but unsuccessful search for the N 1/4 corner thereof and the S 1/4 corner of Section 35.

An axe hack with 70 - 80 years of overgrowth was opened up on the north face of a black oak on an E - W ridge South of the approximate location for the SW corner of Section 36. A trial line was run North 7.5 chains therefrom according to government record terminating in the bottom of a small ravine running North. To complete the day, the field crew from the county surveyor's office agreed to search the immediate vicinity resulting in the discovery of some very old axe work in the west face of a decayed stump on the easterly edge of said ravine at the approximate termination of the trial line run from the ridge to the South.

Since no scribing was found, the township line was run West to the nearest corner which could be found being the 1/4 corner common to Sections 34 and 3. A proportionate location was then computed for the SW corner of Section 36 falling approximately 15 feet East of said decayed stump. Careful dissection thereof opened up a lower face with old axe work and a chaining notch covered with 70-80 years of overgrowth. Satisfied this stump was indeed an 1888 BT, the section corner was perpetuated and is located in the bottom of said ravine and in harmony with government record as being at the "foot of hill" on a course running West.

The north boundary of Section 36 was measured and a proportionate location for the 1/4 corner was computed. A thorough search at said location proved unsuccessful. However, approximately 122 feet West a windthrown snag was found with a lower SW face showing very old axe work, some of which was covered with 2 - 4 inches of overgrowth. In addition, the decayed center of a 10" semi-circular pocket in a clump of Madrone agrees with original field notes. Accordingly, a trial corner was set and the distance remeasured East to a small creek was found to be 9.97 chains and thus in accordance with government record.. Satisfied said windthrown snag was in fact an 1888 BT in the NE quadrant, said 1/4 corner was accordingly perpetuated.

S 31 34 2W  
S 36 34 3W