

LON - MARK SUBDIVISION
 N.W. 1/4 SECTION 19, T. 37 S., R. 1 W., W.M.
 CITY OF MEDFORD, JACKSON COUNTY, OREGON

DEDICATION

KNOW ALL MEN BY THESE PRESENTS:

That we, J.R. Cochran, James A. Cochran, and Andrew L. Cochran, are the owners in fee simple of lands hereon described, and that we have subdivided the same into lots and streets as shown hereon, and the number and size of the lots and lengths of all lines are plainly set forth, and that this plat is a correct representation of the said subdivision, and we do hereby dedicate to the public for public use all streets shown hereon, together with all easements as shown hereon, and we hereby grant to the City of Medford in fee simple, that area portrayed and designated hereon as a street plug. By its approval of this plat, the said City undertakes that at its discretion, it will deed the street plug for public street purposes. We do designate said subdivision as LON - MARK SUBDIVISION.

IN WITNESS WHEREOF, we have set our hands and seals this 21st day of March 1976.

J.R. Cochran J. R. Cochran
James A. Cochran James A. Cochran
Andrew L. Cochran Andrew L. Cochran

STATE OF OREGON) SS
 County of Jackson)

Personally appeared the above named J. R. Cochran, James A. Cochran and Andrew L. Cochran and acknowledged the forgoing instrument to be their voluntary act and deed. Before me:

Linda K. Savage
 Notary Public for Oregon

My Commission expires the 20th day of September 1976.

I certify that pursuant to authority granted to us by the Medford Planning Commission in open meeting of April 8th 1976 the above plat is hereby approved by the Medford Planning Commission. Dated this 16th day of April 1976.

James A. Cochran
 President

Richard Miller
 Secretary

Examined and approved by the Rogue River Valley Irrigation District in regular session this 5th day of December 1973.

Otto Bohlen
 President

Ed Verelstam
 Secretary

Examined and approved this 20 day of February 1974

John E. Jensen
 City Engineer

Examined and approved this 27th day of APRIL 1976.

by Linda K. Savage
 Deputy

Roy E. Stewart
 Director of Assessment and Taxation

For order of the County Court approving this plat see Volume _____ page _____ of County Commissioner's Journal of Proceedings.

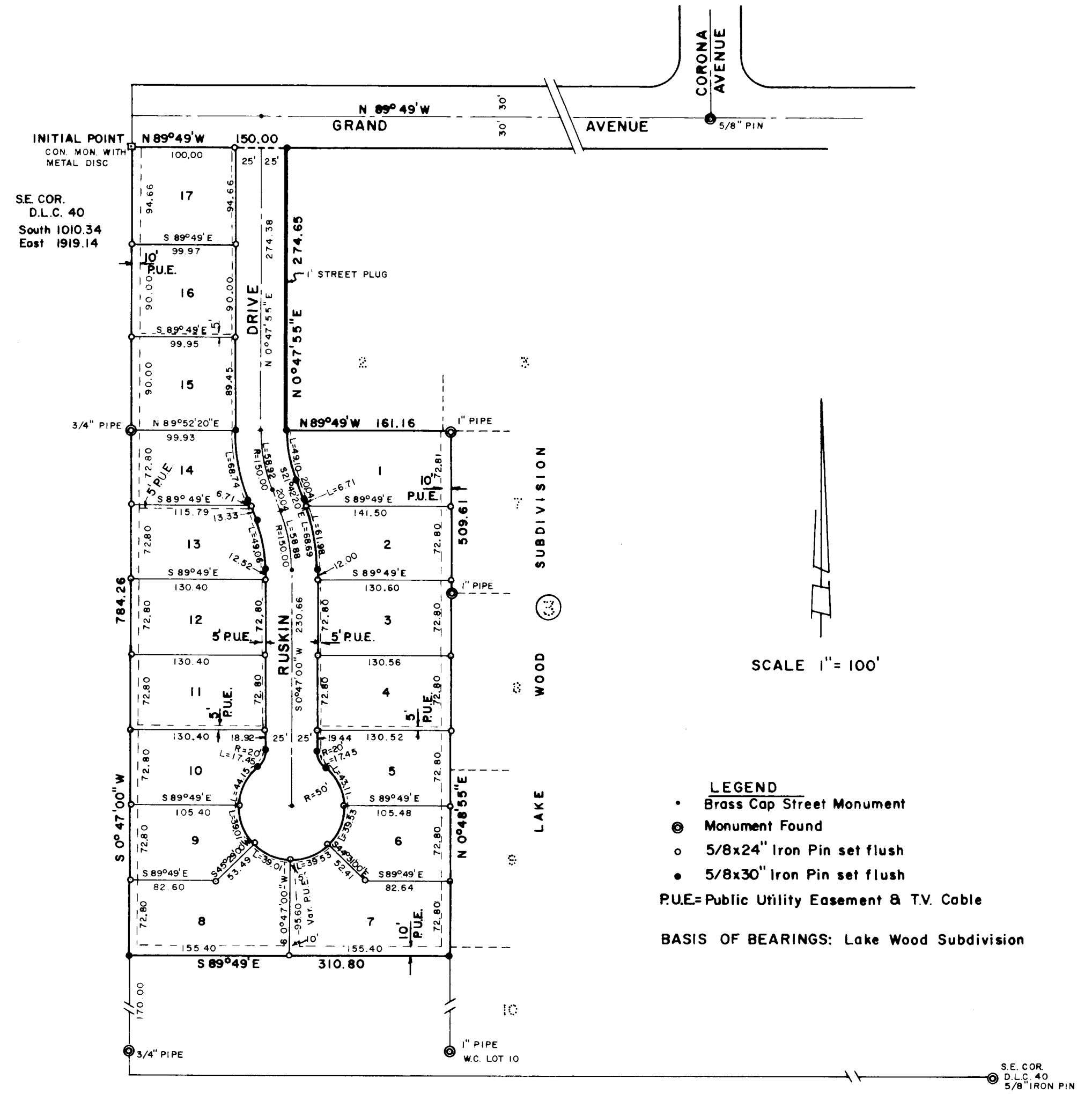
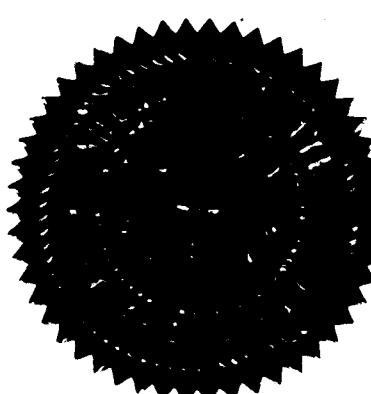
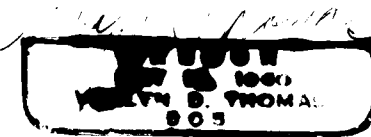
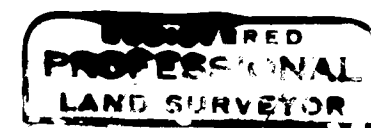
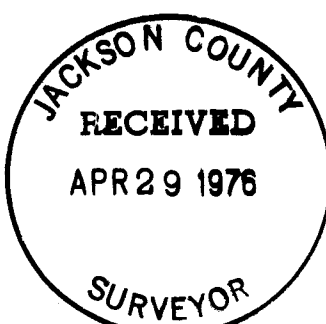
by _____
 Deputy

_____ County Clerk

Filed for record this the 29 day of April 1976 at 9:23 O'Clock A.M. and recorded in Volume 12 of Plats at page 59 of Records of Jackson County, Oregon.

by _____
 Deputy

John E. Jensen
 County Clerk



LEGEND
 • Brass Cap Street Monument
 ⊙ Monument Found
 ⊙ 5/8x24" Iron Pin set flush
 ⊙ 5/8x30" Iron Pin set flush
 P.U.E.=Public Utility Easement & T.V. Cable
 BASIS OF BEARINGS: Lake Wood Subdivision

SCALE 1" = 100'

SURVEYOR'S CERTIFICATE

STATE OF OREGON) SS
 County of Jackson)

I, Verlyn Thomas a duly registered Surveyor of the State of Oregon, being first duly sworn, do hereby certify that I have correctly surveyed and marked with the proper monuments as provided by law the tract of land hereon shown and the said plat is a correct representation of the same, and the following is an accurate description of the boundary lines:
 Beginning at a concrete monument with metal disc, from which the Southeast corner of Donation Land Claim No. 40, Township 37 South, Range 1 West, Willamette Meridian, Jackson County, Oregon, bears South 1010.34 feet, and East, 1919.14 feet; thence South 0°47'00" West, 784.26 feet; thence South 89°49'00" East, 310.80 feet; thence North 0°48'55" East (record North 0°47' East) 509.61 feet; thence North 89°49'00" West, 161.16 feet; thence North 0°47'55" East (record North 0°47' East) 274.65 feet to the south line of Grand Avenue in the City of Medford; thence North 89°49'00" West, along said south line, 150.00 feet to the Initial Point of Beginning.

Verlyn Thomas
 Surveyor

Subscribed and sworn to before me this 27th day of August 1973.

Andrew L. Smith
 Notary Public for Oregon

This is to certify that this tracing is an exact copy of the original plat.

My Commission expires the 4th day of March 1977.

6344

Verlyn Thomas
 Surveyor

22-1140