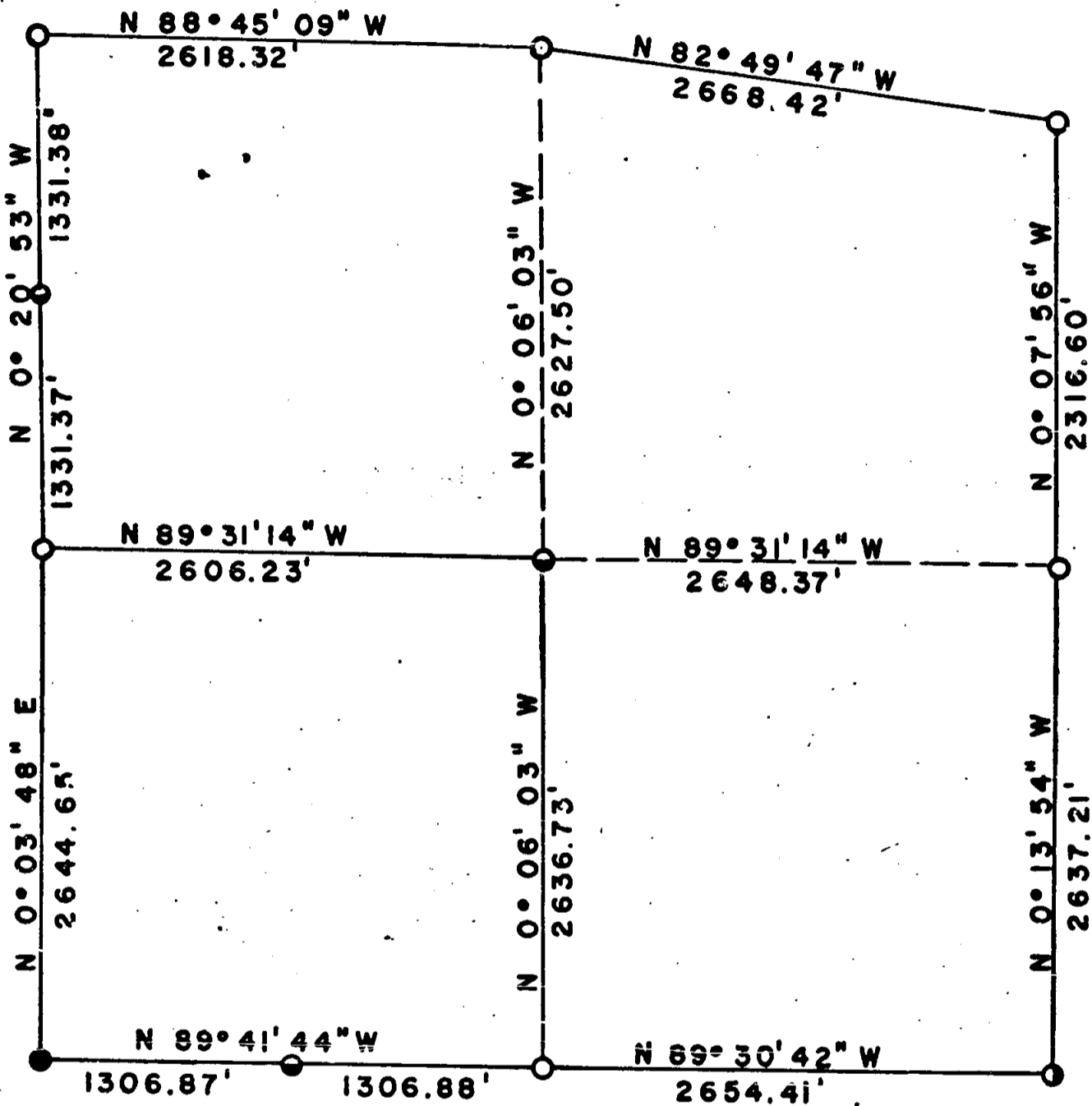
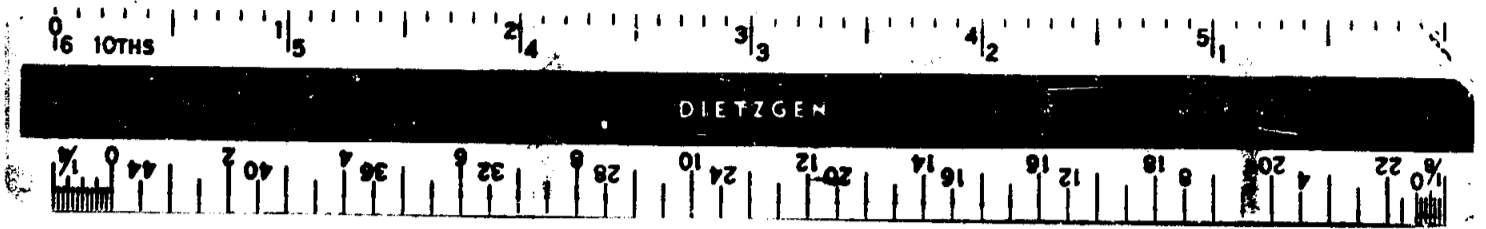


6333

SECTION 31 T34S R2E

JANUARY 27, 1976



- U.S.B.C.
- C.S.B.C.
- ⊙ C.S. 2" G.I. PIPE
- ⦿ RE 4186

SCALE 1" = 1000'

Tom Van Swearingen
 SURVEYOR

JACKSON COUNTY
 RECEIVED
 APR 13 1976
 SURVEYOR

6333

SECTION 31, TOWNSHIP 34 SOUTH, RANGE 2 EAST
WILLAMETTE MERIDIAN

January, 1976

NARRATIVE:

OBJECT: For Medford Resources Corporation to monument corners and mark property lines.

Found following evidence:

- SE Corner G.I. Pipe & C.S. BT's
- E $\frac{1}{4}$ Corner U.S. B.C. & BT's
- NE Corner U.S. B.C. & BT's
- N $\frac{1}{4}$ Corner U.S. B.C. & BT's
- NW Corner U.S. B.C. & BT's
- W $\frac{1}{4}$ Corner U.S. B.C. & BT's
- SW Corner C.S. B.C. & BT's

Ran transit and chain closed traverse survey around Section. Bearings by series of solar observations near SW Corner.

SOUTH LINE: Bearing West half S 89⁰41'44" E
 0.00 feet SW Corner
 1306.87 feet Set W1/16 between S.31, T.34S., R.2E. and S.6, T.35S., R.2E. by proportionate measurement. 5/8"x30" Rebar with Alum. Cap, stamped:
 Scribed RE 4186 BT's
 27 $\frac{1}{2}$ " P. Pine N 58⁰04' W 83.7'
 20" D. Fir S 12⁰24' E 60.7'

RE 4186
 S31 T34S
 W1/16
 S6 T35S
 R2E

2613.75 feet S $\frac{1}{4}$ Corner
 Bearing East half S 89⁰30'42" E
 0.00 feet S $\frac{1}{4}$ Corner
 2654.41 feet SE Corner

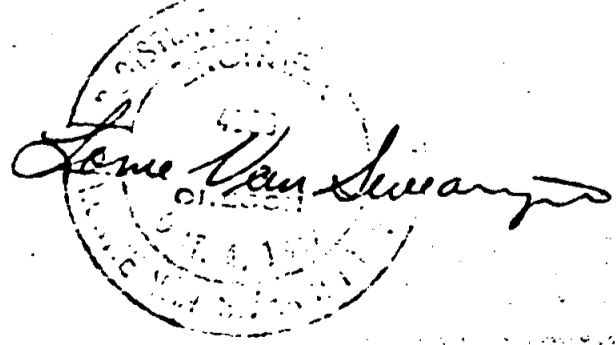
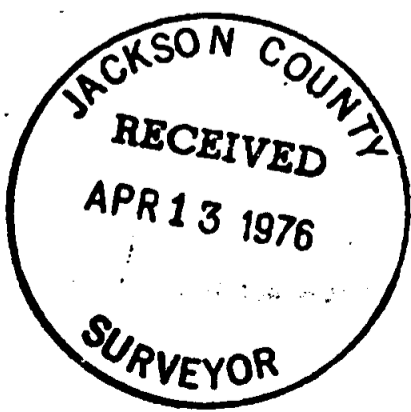
EAST LINE: Bearing South half N 0⁰13'54" W
 0.00 feet SE Corner
 2637.21 feet E $\frac{1}{4}$ Corner
 Bearing North half N 0⁰07'56" W
 0.00 feet E $\frac{1}{4}$ Corner
 2316.60 feet NE Corner

NORTH LINE: Bearing East half N 82⁰49'47" W
 0.00 feet NE Corner
 2668.42 feet N $\frac{1}{4}$ Corner
 Bearing West half N 88⁰45'09" W
 0.00 feet N $\frac{1}{4}$ Corner
 2618.32 feet NW Corner

WEST LINE: Bearing North half S 0⁰20'53" E
 0.00 feet NW Corner
 1331.38 feet Set N1/16 Corner between S.31, T.34S., R.2E. and S.36, T.34S., R.1E. by proportionate measurement. 5/8"x30" Rebar with Alum. Cap, stamped:
 Scribed RE 4186 BT's
 24" S. Pine S 24⁰30' W 28.8'
 14 $\frac{1}{2}$ " D. Fir N 13⁰ E 31.6'

RE 4186
 S36 S31
 N
 1/16
 R1E R2E
 T34S

2662.75 feet W $\frac{1}{4}$ Corner
 Bearing South half S 0⁰03'48" W
 0.00 feet W $\frac{1}{4}$ Corner
 2644.65 feet SW Corner



S31 T34 R2E