

6278

MANN SUBDIVISION UNIT NO. 2

TO THE CITY OF ASHLAND

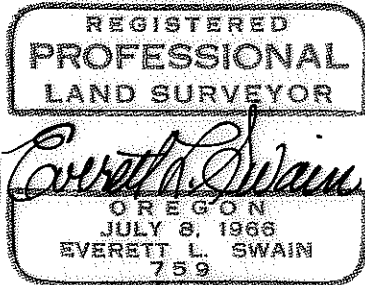
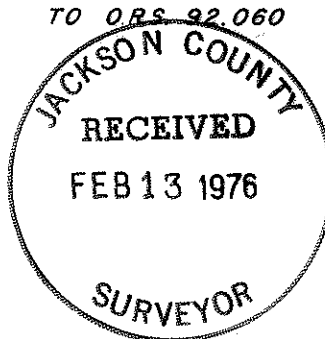
LOCATED IN THE SE 1/4 OF SEC. 5, TWP 39S., R. 1 E. W.M., JACKSON COUNTY, OREGON

76-02165

POST MONUMENTATION MAP

FEBRUARY 3, 1976

I, EVERETT L. SWAIN, DULY REGISTERED SURVEYOR OF THE STATE OF OREGON, DO HEREBY CERTIFY THAT THIS MAP REPRESENTS A SURVEY MADE BY ME OR UNDER MY DIRECTION AND THE MONUMENTS CONFORM TO ORS 92.060



EXAMINED AND APPROVED THIS 4th DAY OF February 1976

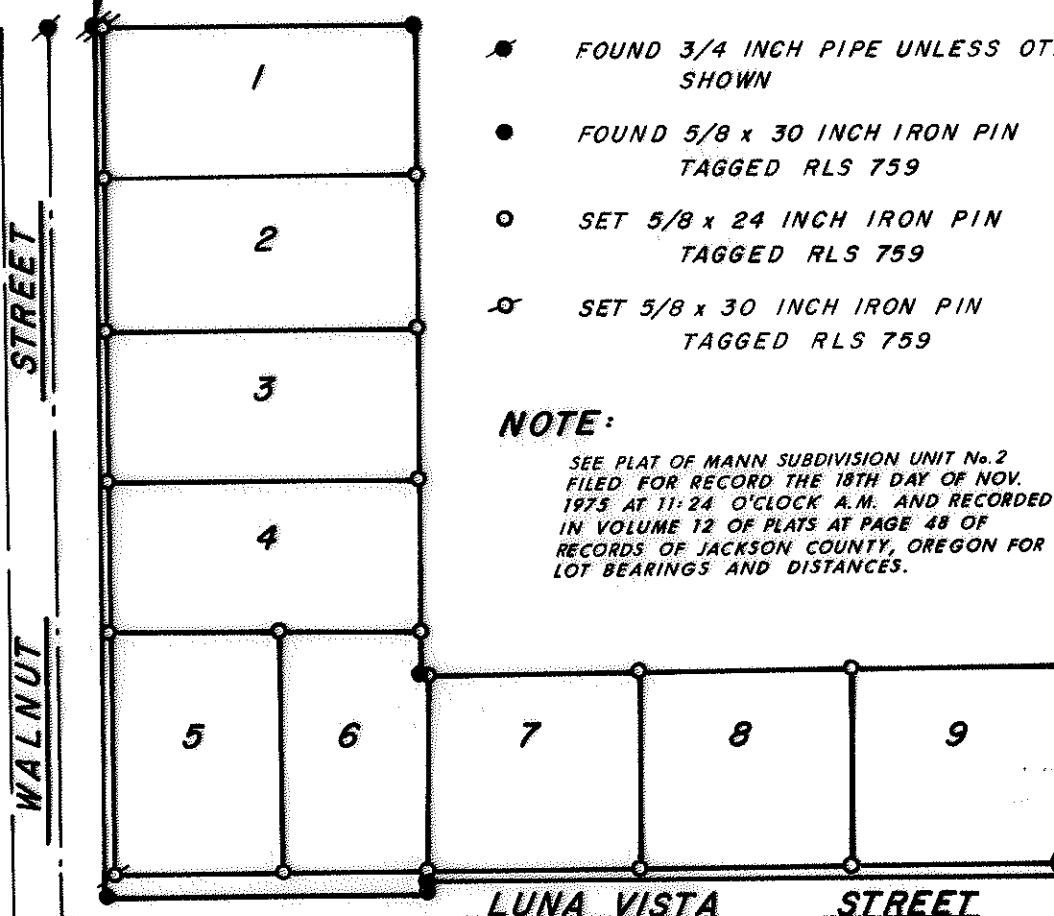
Allen A. Alsing
CITY ENGINEER

FILED FOR RECORD THIS 13th DAY OF February 1976 AT 10:43 O'CLOCK A. M. AND RECORDED IN THE OFFICIAL RECORDS OF JACKSON COUNTY, OREGON.

Harry Chipman
COUNTY CLERK

Ruby A. Poling
DEPUTY

-Fd. 2" Alum. Disk, punched, in 8"± Conc. Mass, 8" deep



- FOUND 3/4 INCH PIPE UNLESS OTHERWISE SHOWN
- FOUND 5/8 x 30 INCH IRON PIN TAGGED RLS 759
- SET 5/8 x 24 INCH IRON PIN TAGGED RLS 759
- ⊗ SET 5/8 x 30 INCH IRON PIN TAGGED RLS 759

NOTE:

SEE PLAT OF MANN SUBDIVISION UNIT No. 2 FILED FOR RECORD THE 18TH DAY OF NOV. 1975 AT 11:24 O'CLOCK A.M. AND RECORDED IN VOLUME 12 OF PLATS AT PAGE 48 OF RECORDS OF JACKSON COUNTY, OREGON FOR LOT BEARINGS AND DISTANCES.

NORTH

SCALE 1"=80'

Fd. Initial Point of MANN SUBDIVISION UNIT NO. 2

Fd. 1" Iron Pipe w/Br. Cap

6278