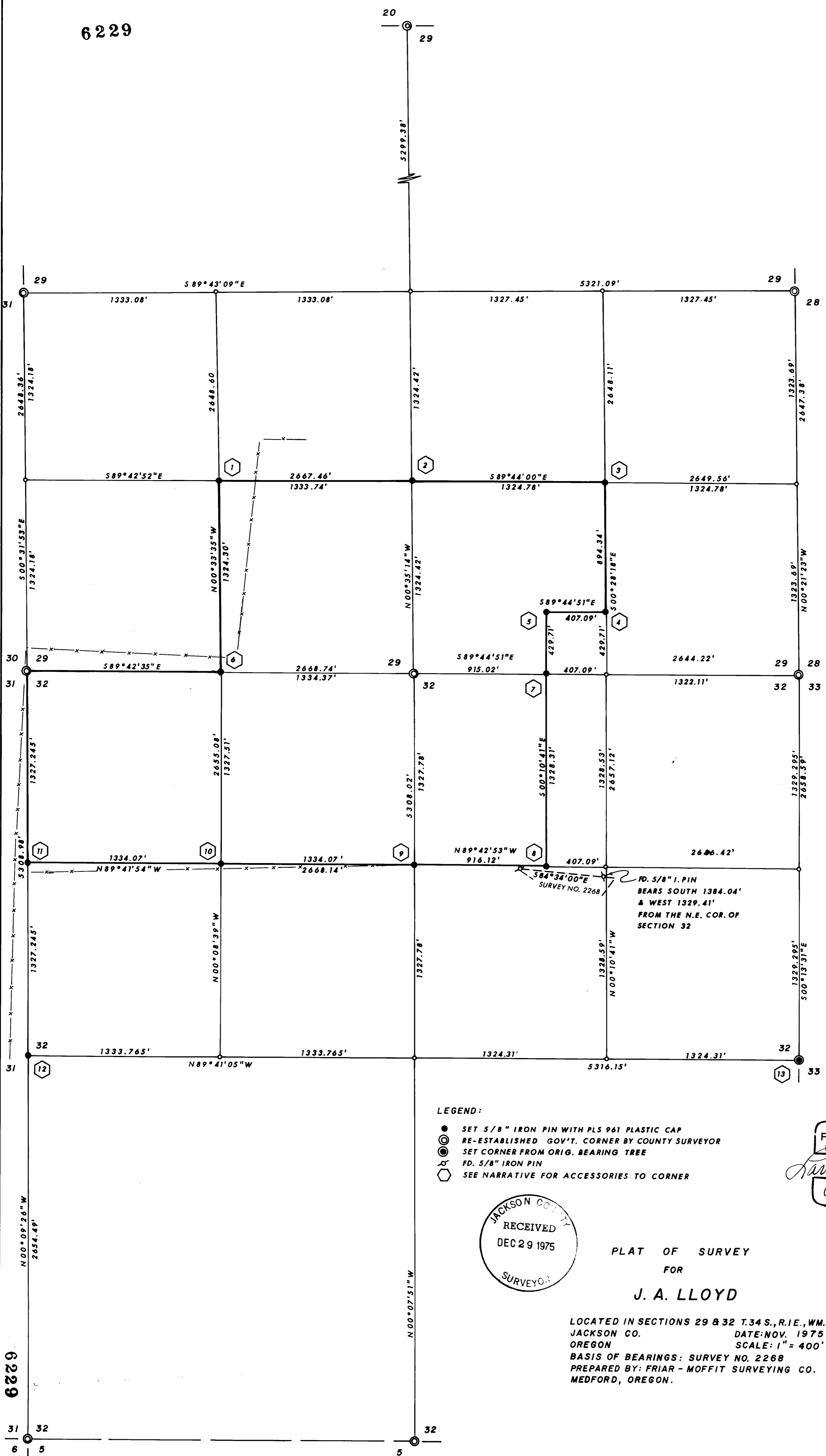
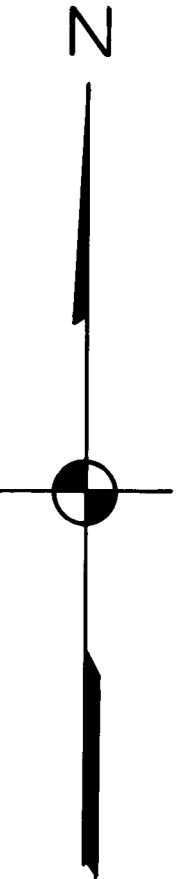


6229



LEGEND:

- SET 5/8" IRON PIN WITH PLS 961 PLASTIC CAP
- ⊙ RE-ESTABLISHED GOV'T. CORNER BY COUNTY SURVEYOR
- ⊙ SET CORNER FROM ORIG. BEARING TREE
- ⊙ FD. 5/8" IRON PIN
- ⊙ SEE NARRATIVE FOR ACCESSORIES TO CORNER

REGISTERED
PROFESSIONAL
LAND SURVEYOR

Larry J. Friar

OREGON
JULY 16, 1971
LARRY J. FRIAR
961



PLAT OF SURVEY
FOR
J. A. LLOYD

LOCATED IN SECTIONS 29 & 32 T.34 S., R.1 E., WM.
JACKSON CO. DATE: NOV. 1975
OREGON SCALE: 1" = 400'
BASIS OF BEARINGS: SURVEY NO. 2268
PREPARED BY: FRIAR - MOFFIT SURVEYING CO.
MEDFORD, OREGON.

6229

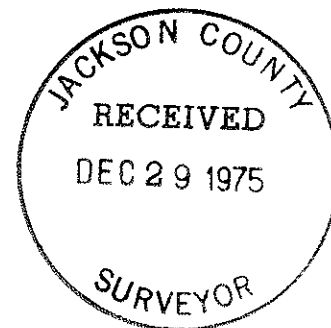
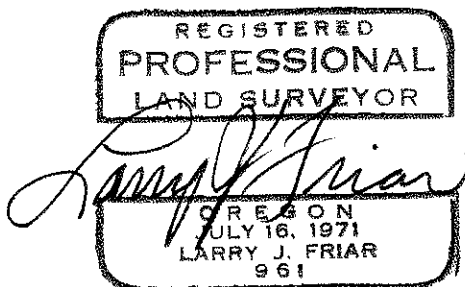
6229

Survey Narrative for J. A. Lloyd continued. Page 2 of 2

11. N 1/16 S31/S32. Set 5/8" iron pin tagged PLS 961 from which bears: A 6" oak N43°W 9.8' scribed N1/16 S31 B.T.
A 6" oak N83½°E 6.5' scribed N 1/16 S32 B.T.
12. ¼ S31/S32. Set 5/8" iron pin tagged PLS 961 (at proportional distance after thorough search failed to find evidence of original corner location.)
from which bears: A 6" oak N44½°W 17.5' scribed ¼ S31 B.T.
An 8" oak N14°E 8.2' scribed ¼ S32 B.T.
13. ¼ S32/S33. Set 5/8" iron pin tagged PLS 961 from which bears: An 18" fir N17°E 7.3' original B.T. 10" fir I opened for ¼ scribe.
An 8" oak N60½°W 33.6' scribed ¼ S32 B.T.
A 10" oak N89½°E 53.0' scribed ¼ S33 B.T.

DATE: December 26, 1975

Surveyed by: Larry J. Friar
Professional Land Surveyor



SURVEY NARRATIVE TO COMPLY WITH O.R.S. 209.250

SURVEY FOR:

J. A. Lloyd
7125 Butte Falls Hwy.
Eagle Point, Oregon 97524

LOCATION:

The North $\frac{1}{2}$ of Section 32 and the South $\frac{1}{2}$ of Section 29, Township 34 South, Range 1 East, Willamette Meridian, Jackson County, Oregon.

PURPOSE:

To Survey and monument a tract of land containing 186 acres.

PROCEDURE:

All of the Section corners of Section 29 and 32 were found and tied in using E.D.M. equipment except for the $\frac{1}{4}$ corner of Sections 31 & 32, which was set by single proportionment. The Government Survey monuments as re-established by the County Surveyor's Office are shown by symbol on the attached map. The corners on this Survey were set by conventional transit and tape method from E.D.M. control traverses and are listed as follows:

1. S.W. 1/16 S29. Set 5/8" iron pin tagged PLS 961 from which bears: An 18" oak S52 $\frac{1}{2}$ °W 55.1' scribed B.T.
A 6" oak N6 $\frac{1}{2}$ °E 47.5' scribed S.W. 1/16 B.T.
2. CS 1/16 S29. Set 5/8" iron pin tagged PLS 961 from which bears: An 18" oak N66 3/4°W 27.5' scribed CS 1/16 B.T.
A 10" pine S20 3/4°W 19.3' scribed CS 1/16 B.T.
3. S.E. 1/16 S29. Set 5/8" iron pin tagged PLS 961 from which bears: A 7" oak N69 3/4°W 45.7' scribed S.E. 1/16 B.T.
An 8" oak N47 3/4°E 7.2' scribed S.E. 1/16 B.T.
4. Set 5/8" iron pin tagged PLS 961, built rock mound.
5. Set 5/8" iron pin tagged PLS 961, built rock mound.
6. W 1/16 S29/S32. Set 5/8" iron pin tagged PLS 961 from which bears: A 6" oak N16°E 60.1' scribed W 1/16 B.T.
A 12" fir S46 $\frac{1}{2}$ °E 65.8' scribed W 1/16 B.T.
7. Set 5/8" iron pin tagged PLS 961, built rock mound.
8. Set 5/8" iron pin tagged PLS 961, built rock mound.
9. CN 1/16 S32. Set 5/8" iron pin tagged PLS 961 from which bears: A 7" fir S17 $\frac{1}{2}$ °E 9.2' scribed CN 1/16 S32 B.T.
An 8" fir S70 $\frac{1}{2}$ °W 11.1' scribed CN 1/16 S32 B.T.
10. NW 1/16 S32. Set 5/8" iron pin tagged PLS 961, built rock mound.

