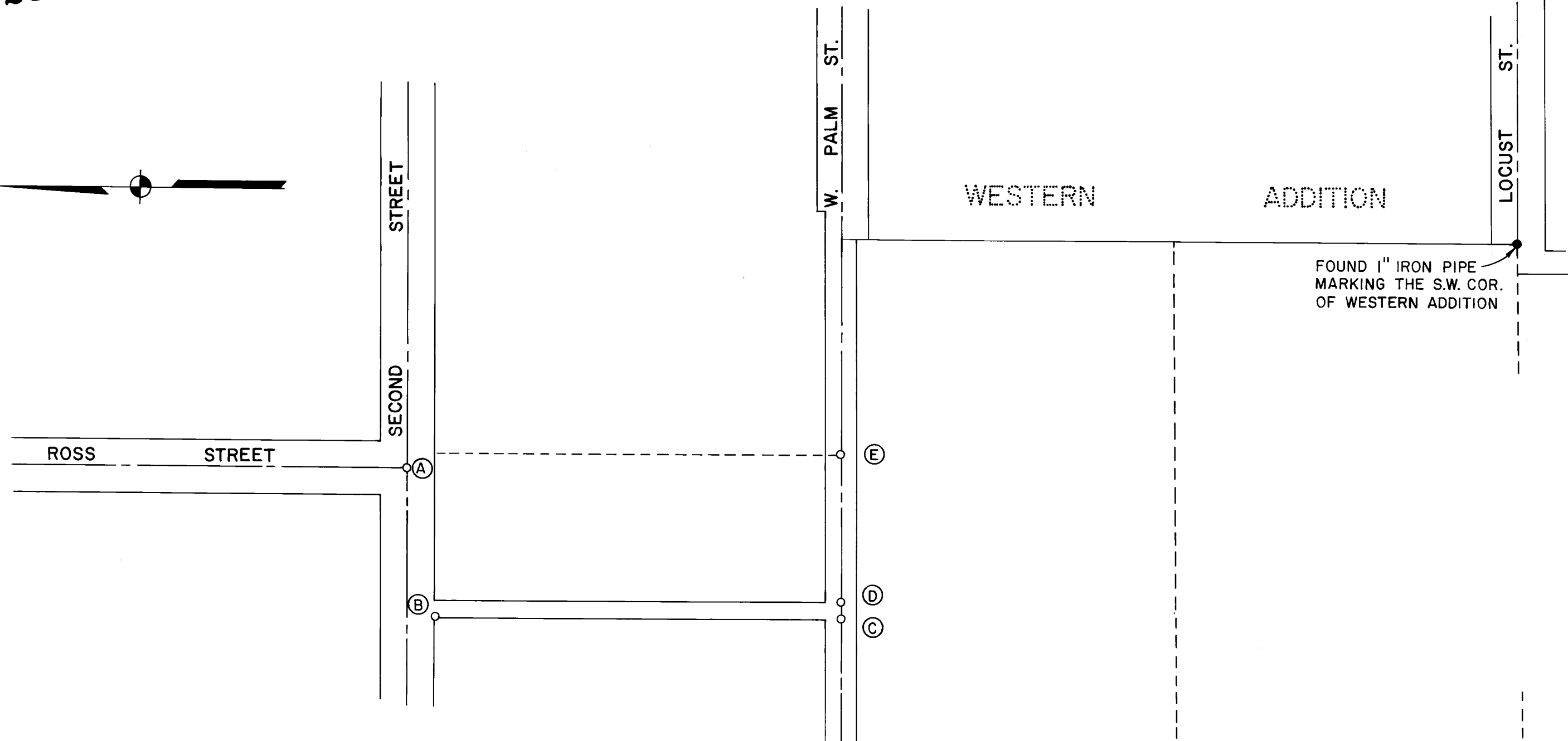
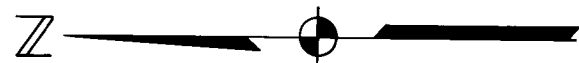


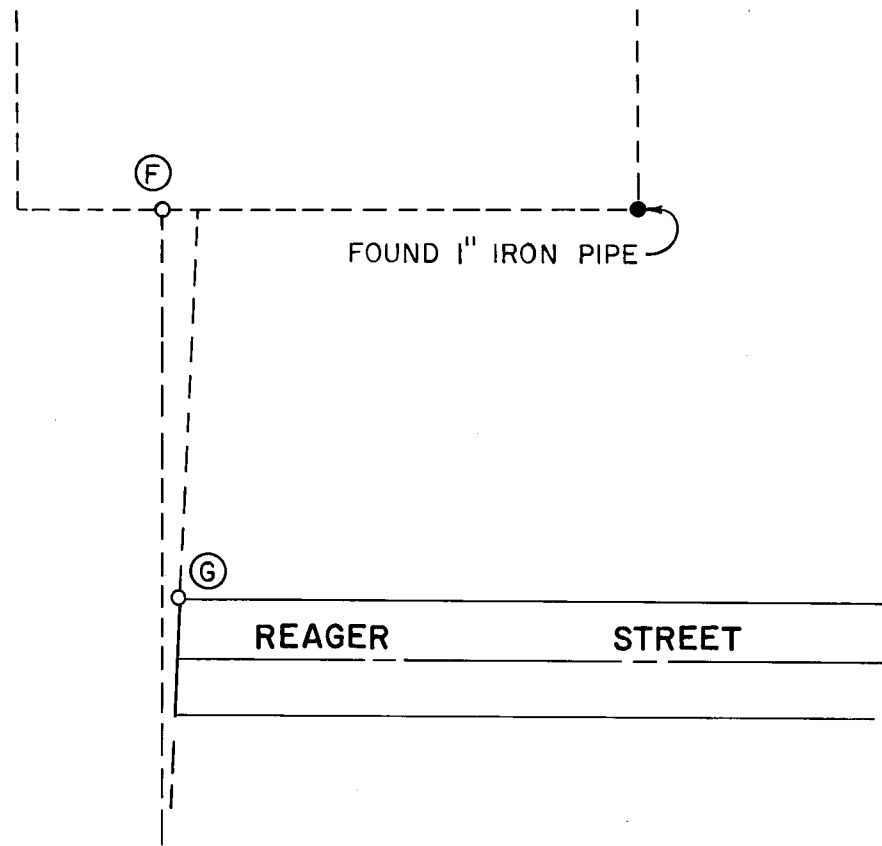
6223



FOUND 1" IRON PIPE MARKING THE S.W. COR. OF WESTERN ADDITION

LEGEND :

- = FOUND MONUMENT AS SHOWN.
- = SET 5/8" IRON PIN WITH PLASTIC CAP.



PLAT SHOWING MONUMENTS

FOR

BEAR CREEK VALLEY SANITARY AUTHORITY

BEING LOCATED IN THE N.W. 1/4 OF SECTION 25 AND THE N.E. 1/4 OF SECTION 26, T.37S., R.2W., W. M.

JACKSON COUNTY OREGON

SCALE: 1"=100' JULY, 1975

PREPARED BY: FRIAR — MOFFIT SURVEYING

REGISTERED PROFESSIONAL LAND SURVEYOR

*Larry J. Friar*

OREGON JULY 16, 1971 LARRY J. FRIAR 961

JACKSON COUNTY RECEIVED DEC 16 1975 SURVEYOR

6223

SURVEY TO COMPLY WITH O. R. S. 209.250

SURVEY FOR: Bear Creek Valley Sanitary Authority  
3915 S. Pacific Hwy.  
Medford, Oregon 97501

LOCATION: In the Northwest quarter ( $\frac{1}{4}$ ) of Section  
25 and the Northeast quarter ( $\frac{1}{4}$ ) of Sec-  
tion 26, Township 37 South, Range 2 West,  
Willamette Meridian, Jackson County, Ore-  
gon.

PURPOSE: Prior to the construction of new sewer  
lines in the area shown on the attached  
map, reference points were set for the  
monuments that were going to be destroyed  
during construction.

PROCEDURE: After construction was completed the  
following monuments were re-established  
from the reference points:

- A- Found  $\frac{3}{4}$  inch iron pin before  
construction. Set  $\frac{5}{8}$  inch iron  
pin with plastic cap after con-  
struction was completed.
- B- Found 1 inch iron pipe before  
construction. Set  $\frac{5}{8}$  inch iron  
pin with plastic cap after con-  
struction was completed.
- C- Found  $\frac{3}{4}$  inch iron pipe before  
construction. Set  $\frac{5}{8}$  inch iron  
pin with plastic cap after con-  
struction was completed.
- D- Found  $\frac{3}{4}$  inch iron pipe before  
construction. Set  $\frac{5}{8}$  inch iron  
pin with plastic cap after con-  
struction was completed.
- E- Found  $\frac{1}{2}$  inch iron pipe before  
construction. Set  $\frac{5}{8}$  inch iron  
pin with plastic cap after con-  
struction was completed.
- F- Found  $\frac{5}{8}$  inch iron pin before  
construction. Set  $\frac{5}{8}$  inch iron  
pin with plastic cap after con-  
struction was completed.
- G- Found 1 inch iron pipe before  
construction. Set  $\frac{5}{8}$  inch iron  
pin with plastic cap after con-  
struction was completed.

DATE: July, 1975

Larry J. Friar  
Professional Land Surveyor

